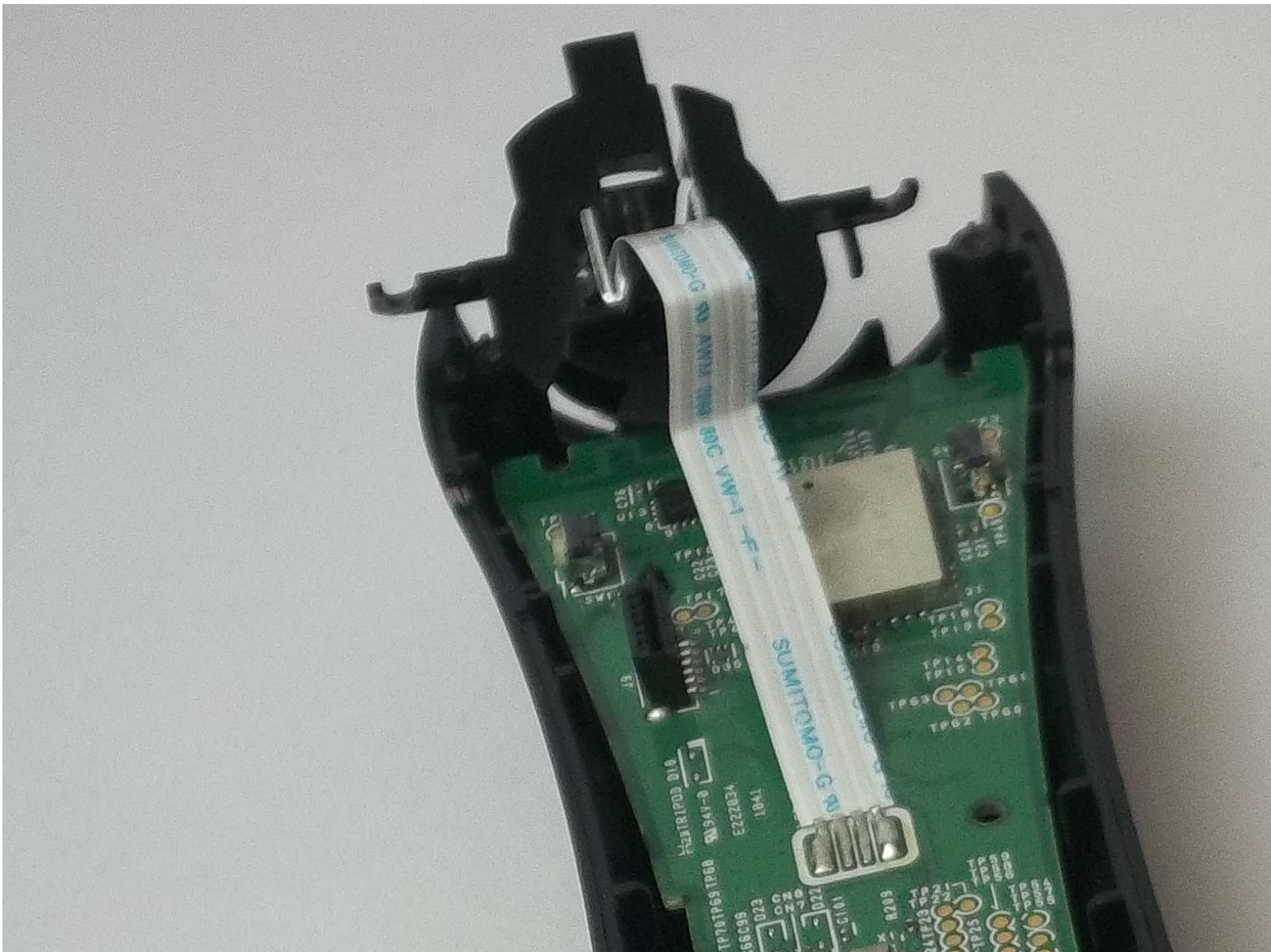




# PlayStation Move LED Light Replacement

This guide will walk you through replacing LED Light on the Playstation Move.

Written By: Maritza Martinez



# INTRODUCTION

Use this guide to replace the LED light on the Playstation Move



## TOOLS:

- [Phillips #0 Screwdriver](#) (1)
  - [Tweezers](#) (1)
  - [iFixit Opening Tools](#) (1)
-

## Step 1 — Battery



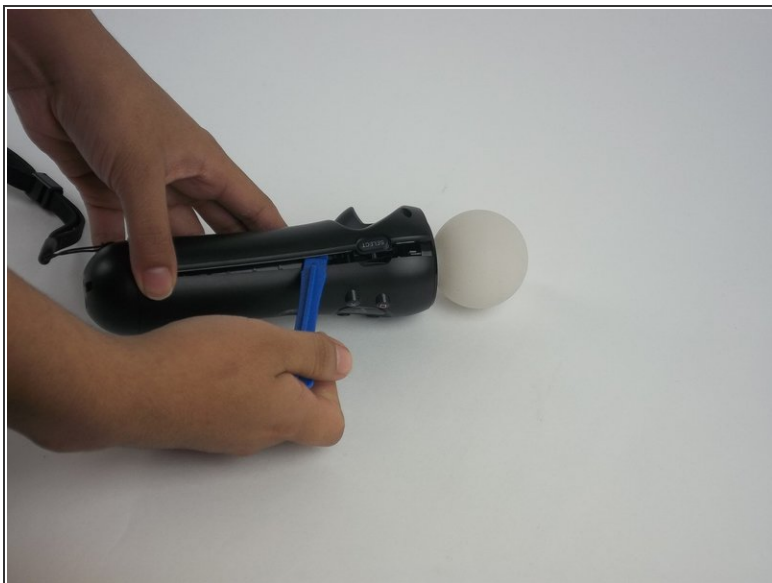
- Using a Phillips #1 screwdriver, remove the four 10mm screws from the corners of the trigger button.

## Step 2



- Using a Phillips #0 screwdriver, remove the four 10mm screws located at the back of the device.

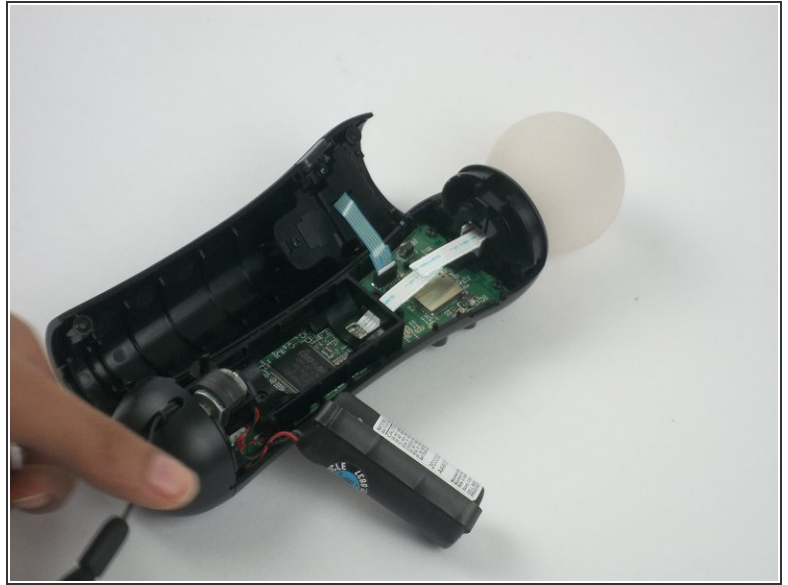
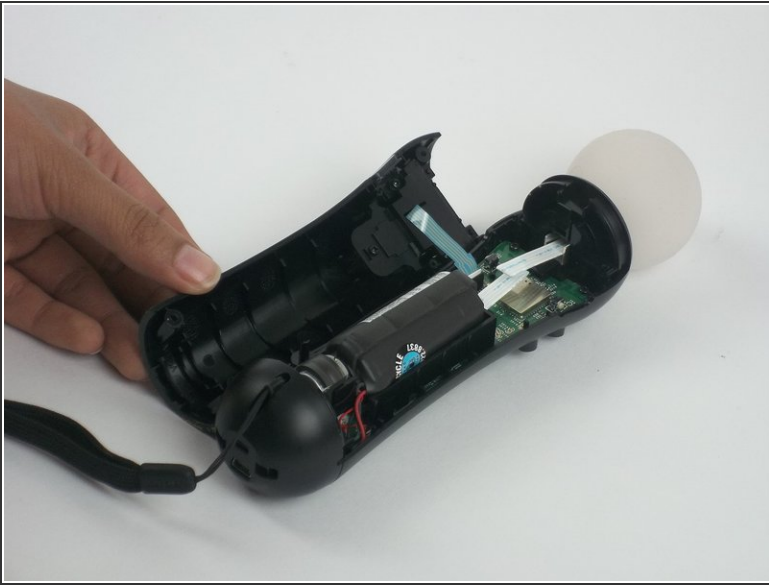
## Step 3



- Insert the plastic opening tool at the indent along the front and back surfaces of the controller.
- Gently use a forward and backward motion to safely pop open the cover.
- Use your hands to further pull it apart and pop it open.



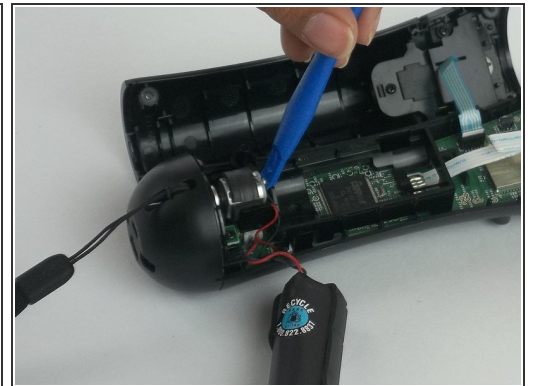
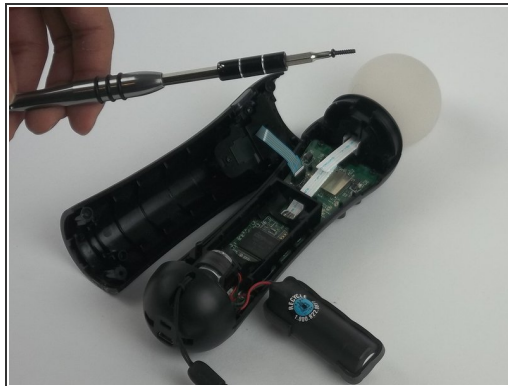
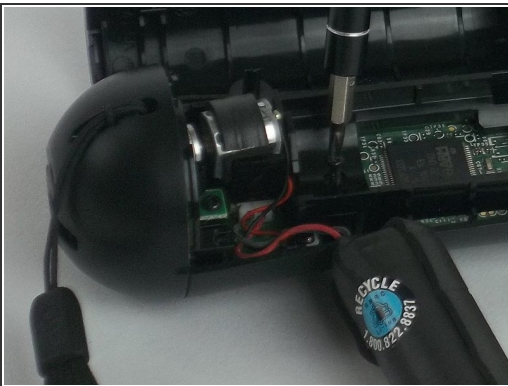
## Step 4



- Once the device is opened, lift the battery out of the black plastic holder.

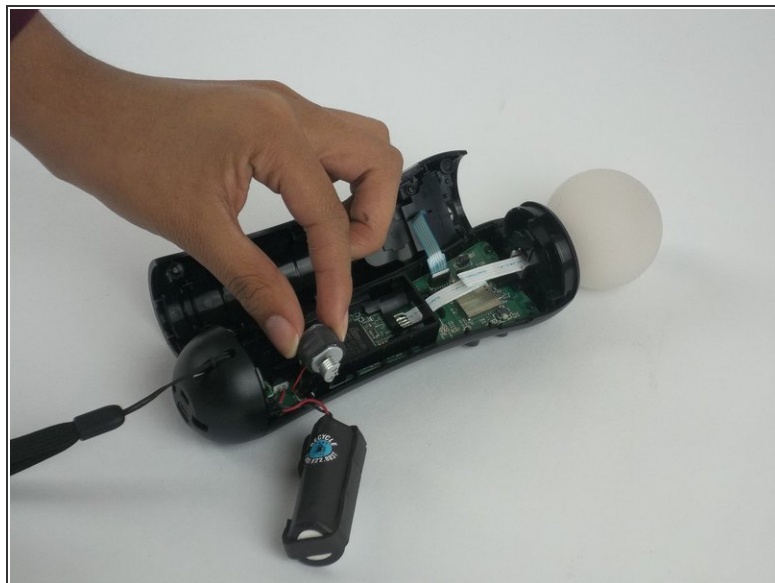
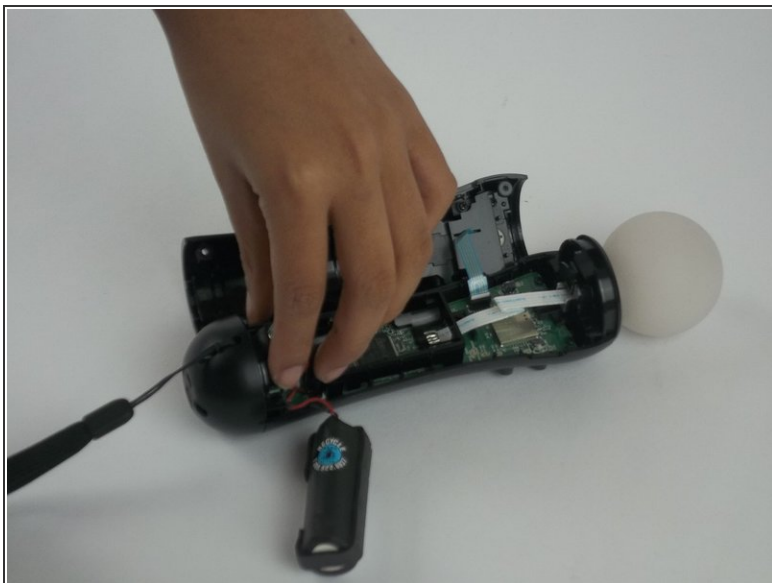
⚠ Carefully pull the battery out and ensure that it's wires are still connected to the inside.

## Step 5



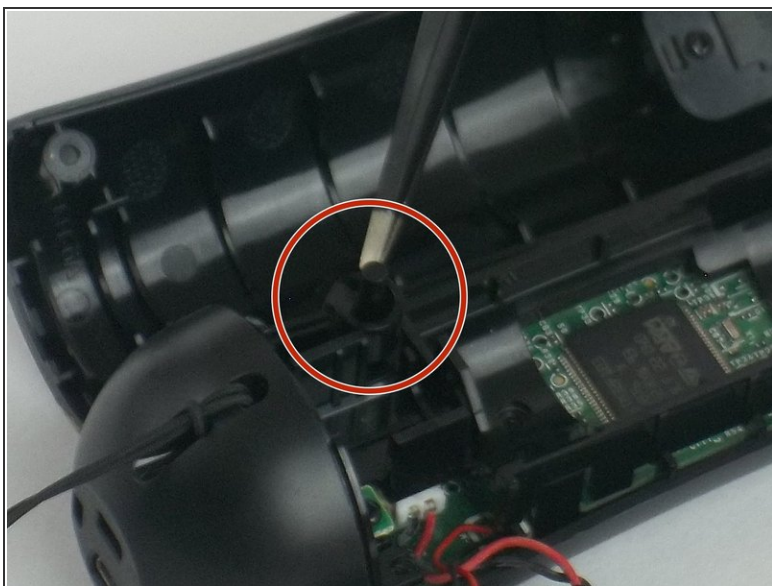
- Using a Phillips head screwdriver, remove the 9mm screw located to the right of the battery, which is connected to the inner plastic frame.
- Use the plastic opening tool to carefully take out the grey cylindrical piece (vibrator) that is also attached to a wire.

## Step 6



- Gently pull out the small cylindrical grey piece (vibrator).
- ❗ Removing this piece makes it easier to access the wire connection of the battery and remove it.

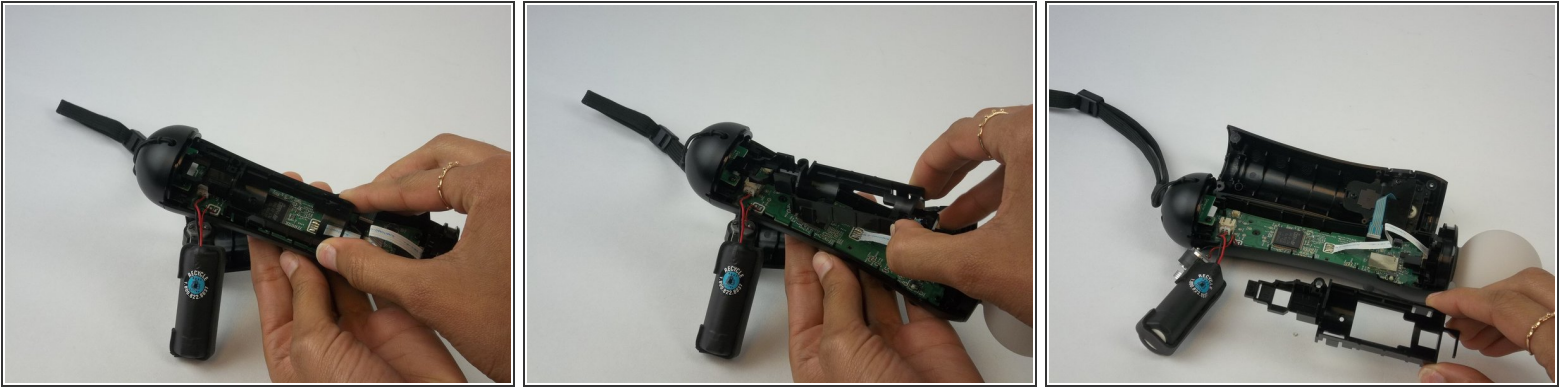
## Step 7



- Use tweezers to remove the small piece with a cylindrical top that is located to the left of the inner plastic frame.

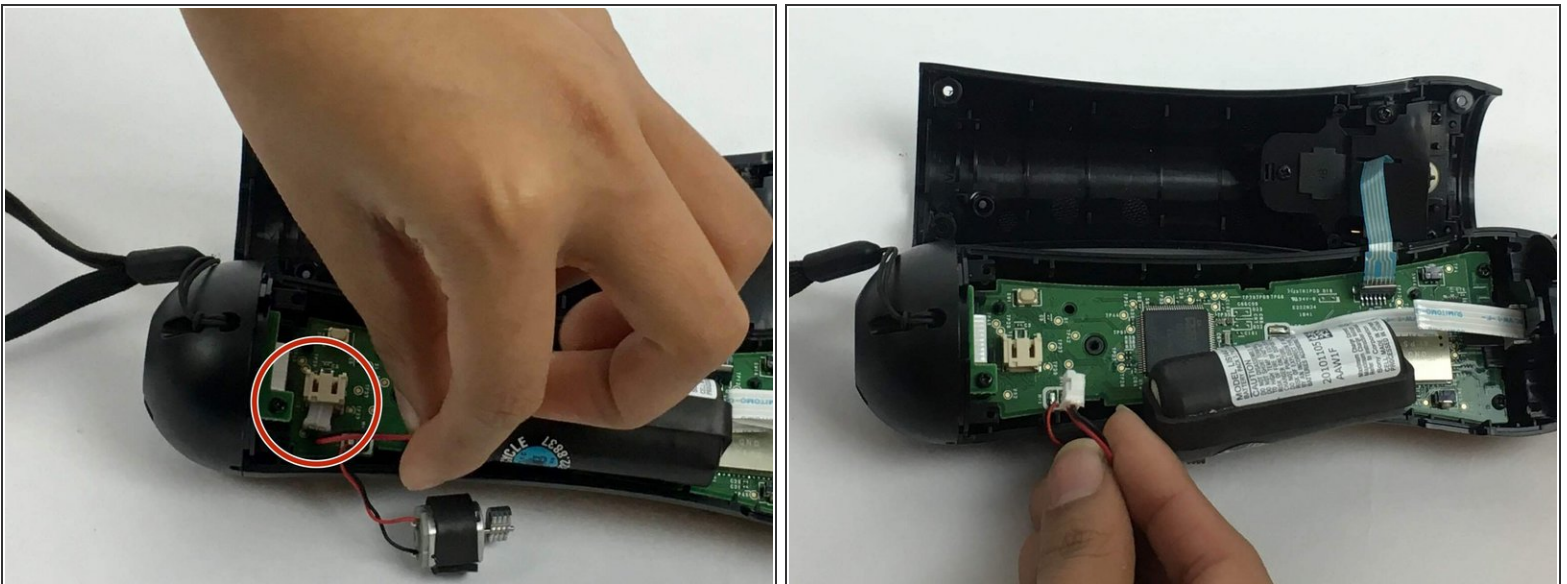


## Step 8



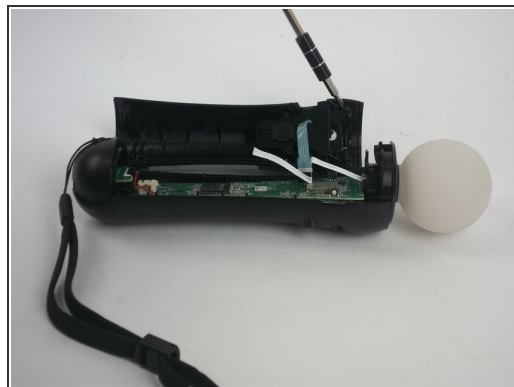
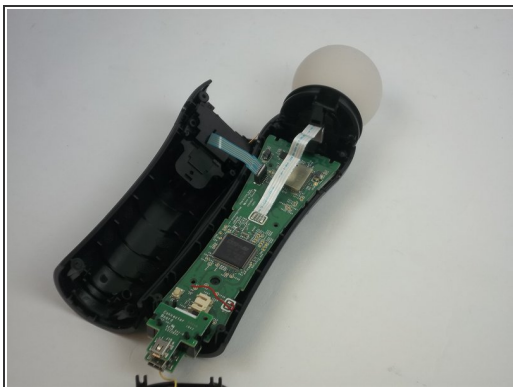
- Use one hand to hold the bottom of the device, and the other hand to squeeze the inner plastic frame.
  - While squeezing the inner plastic frame, pull it up and then pull it towards you to detach it.
- ⚠ While removing the frame, be extremely careful because it could damage the frame or the motherboard.

## Step 9



- Gently pull on the end of the red and black wires which is closest to the connector to disconnect the battery.

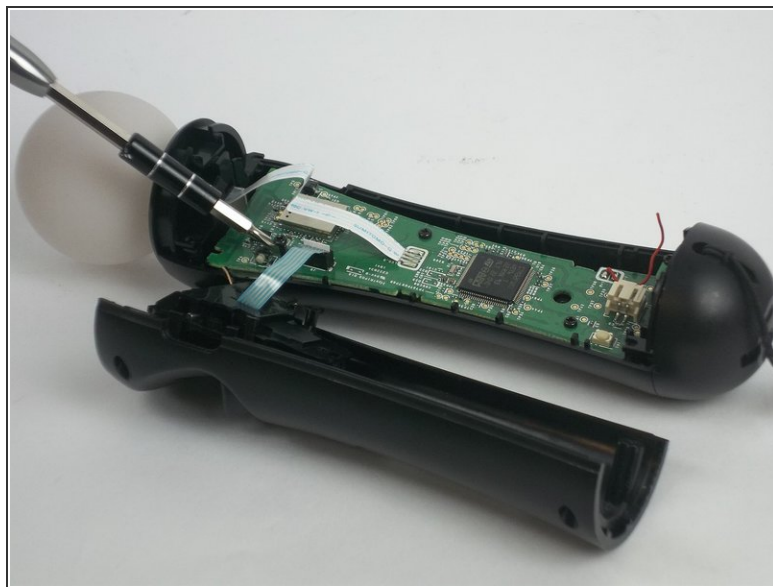
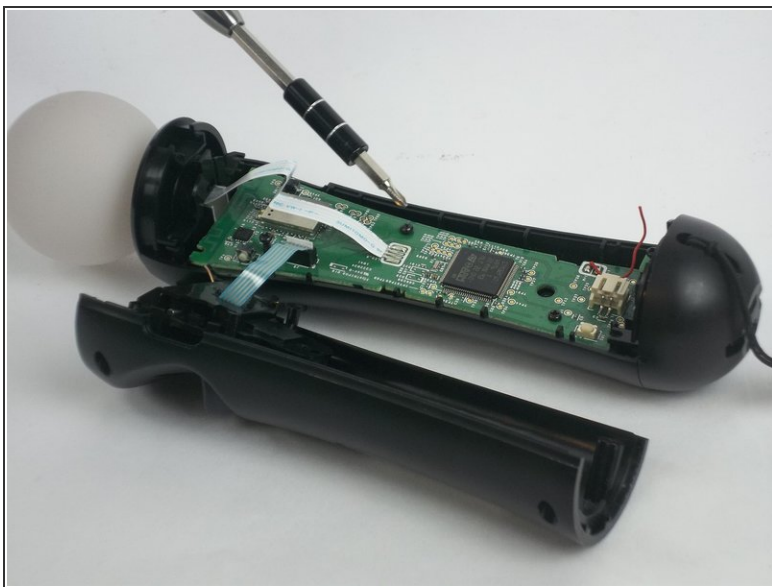
## Step 10 — Motherboard



- Remove the five 1.2 mm screws from upper portion of the controller.

**i** If you are replacing the **trigger button**, continue to step 13.

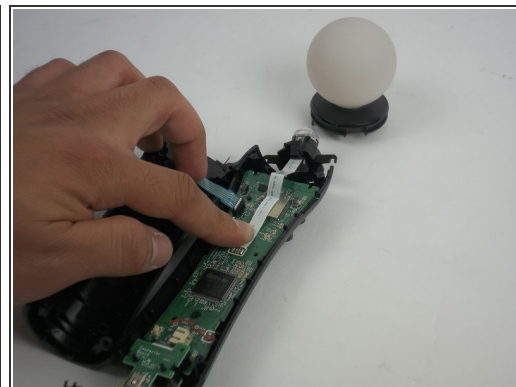
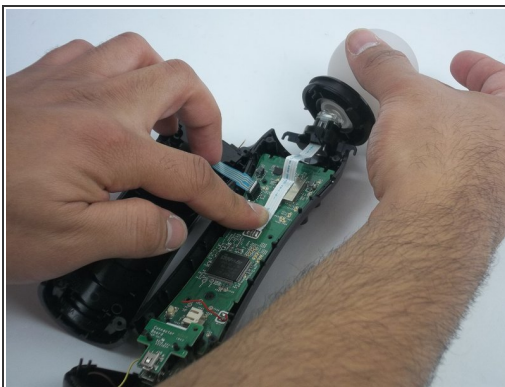
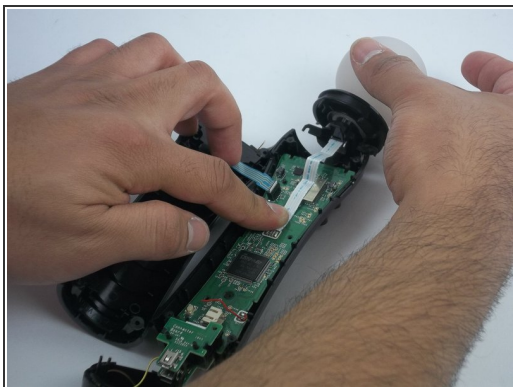
## Step 11



- Remove the two 1.2mm Phillips #1 screws.

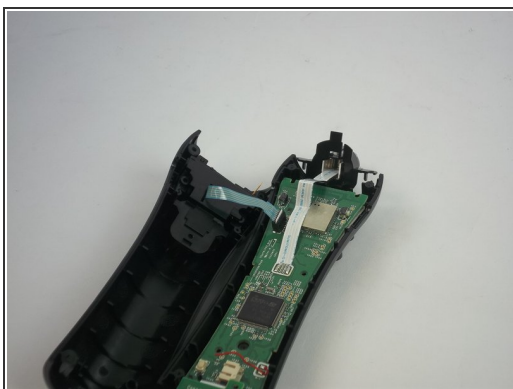


## Step 12



- Cautiously remove the circular white piece at the top without removing the LED inside.

## Step 13

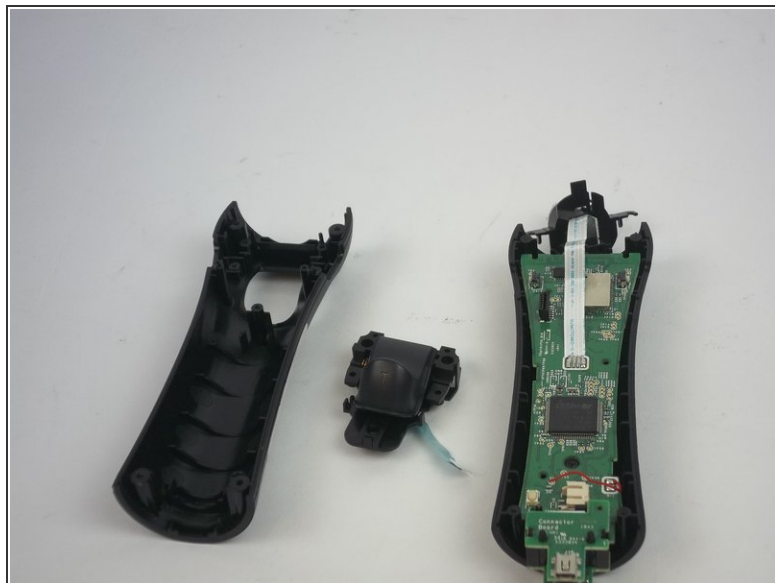
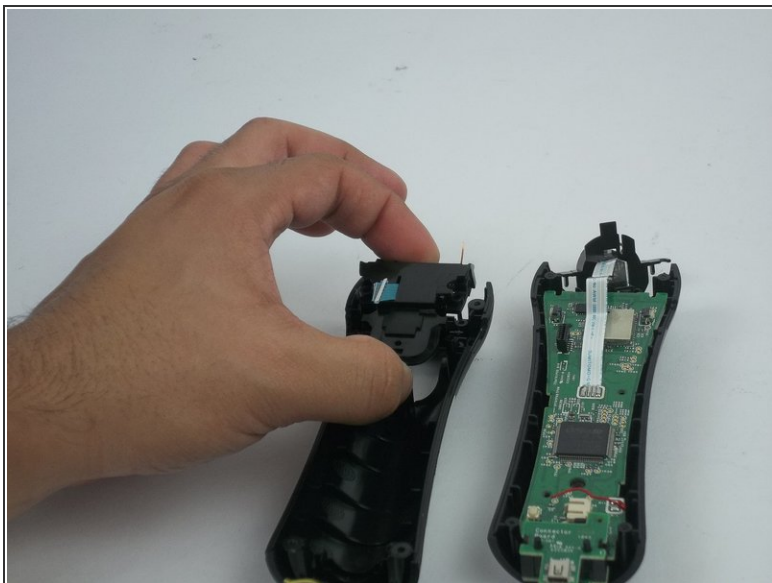


- Remove the blue strip that is connected to the trigger button from the motherboard



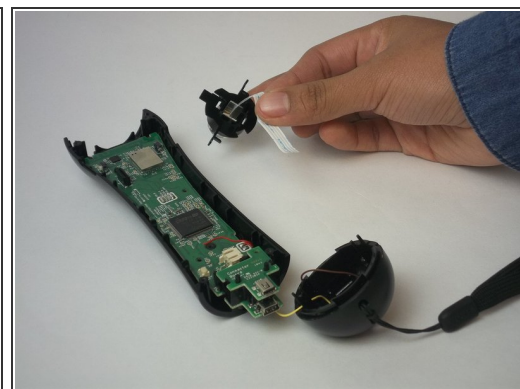
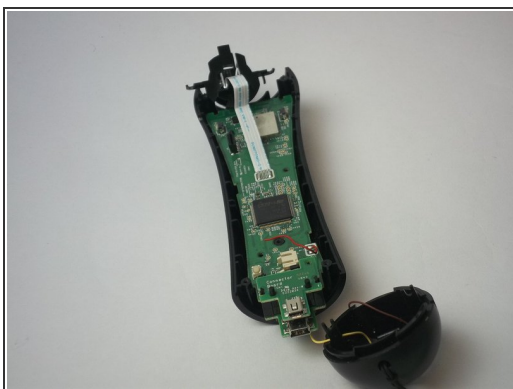
Be careful to gently detach it from the motherboard. The strip may rip if too much strength is applied.

## Step 14



- Remove the trigger button from the controller.

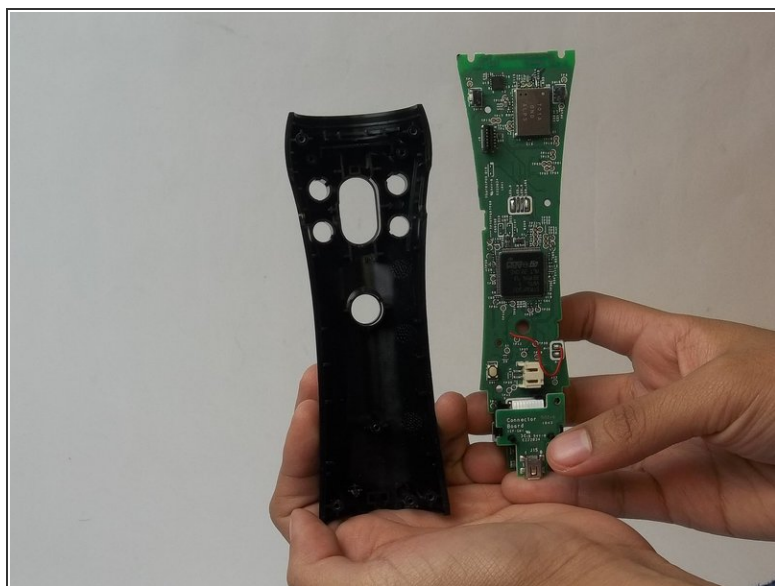
## Step 15



- Remove the LED light by removing the white strip.

**i** If you are replacing the **LED light**, continue to [Step 17](#).

## Step 16



- Remove the motherboard from the plastic case.

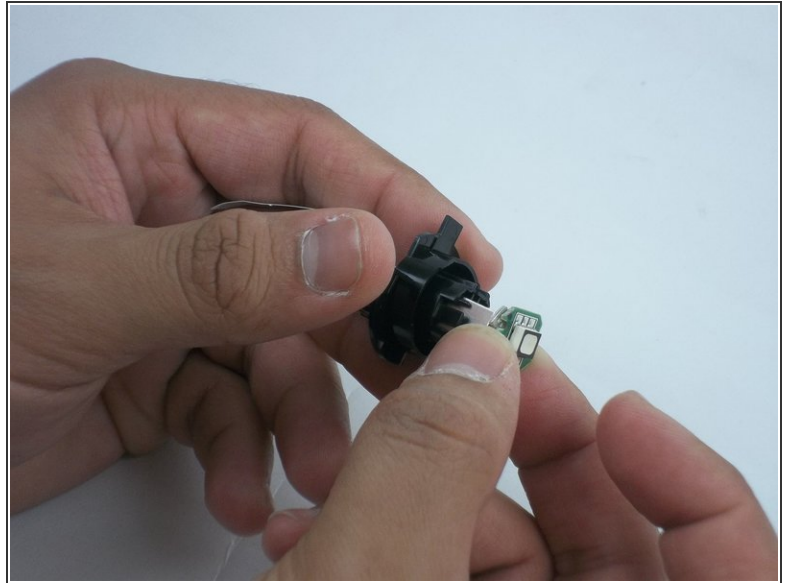
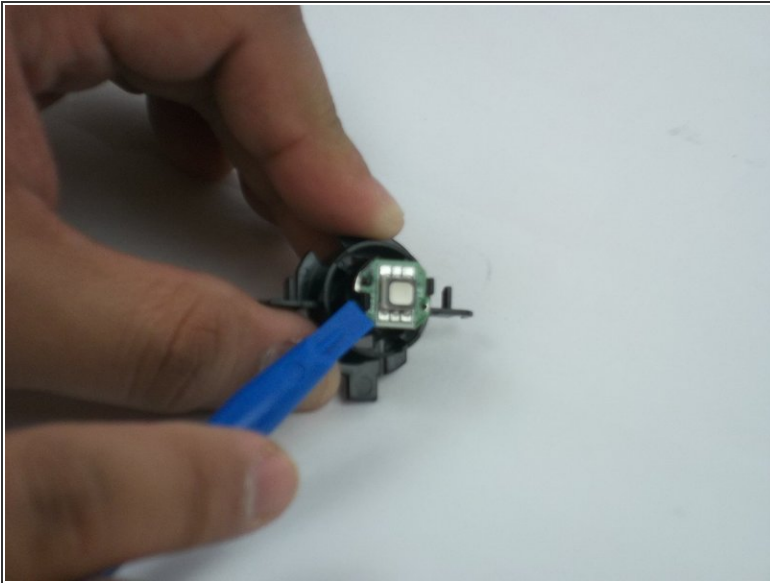


## Step 17 — LED Light



- Insert tweezers between the LED case and the LED clear plastic cover.
- Lift the edge of the LED clear cover clip to be able to remove the cover.
- Repeat the previous step to the other side.
- Remove the LED cover.

## Step 18



- Remove the LED board using a blue opening tool to lift the board.
- After the board is loose, remove the LED board.

To reassemble your device, follow these instructions in reverse order.