



PlayStation Move Trigger Button Replacement

In this guide you will have direction to how you can remove the trigger button

Written By: Abdulaziz Refaei





TOOLS:

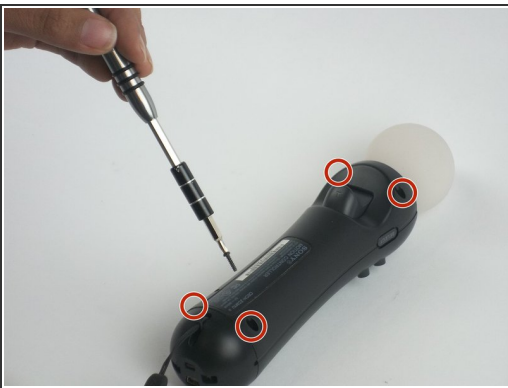
- [Phillips #0 Screwdriver](#) (1)
 - [Tweezers](#) (1)
 - [iFixit Opening Tools](#) (1)
-

Step 1 — Battery



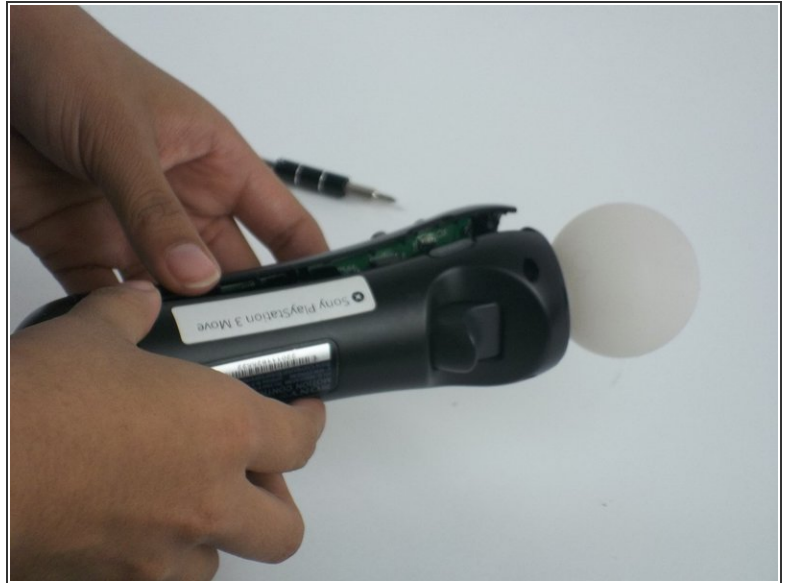
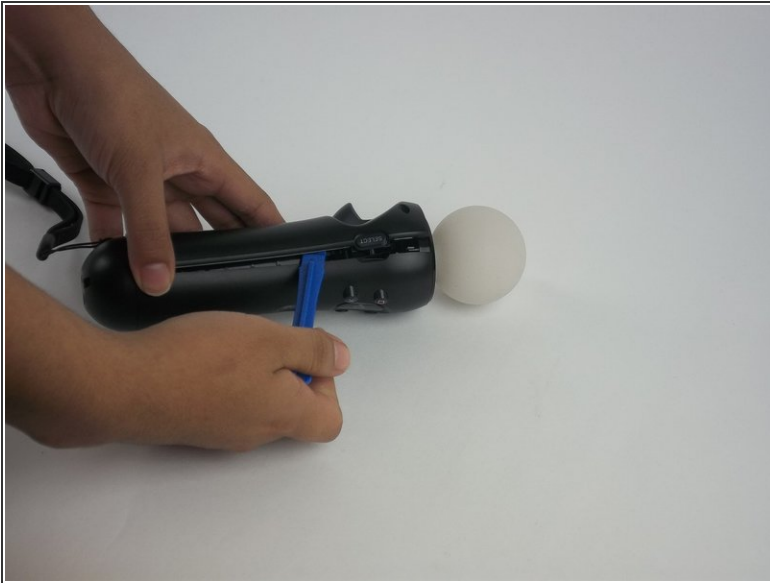
- Using a Phillips #1 screwdriver, remove the four 10mm screws from the corners of the trigger button.

Step 2



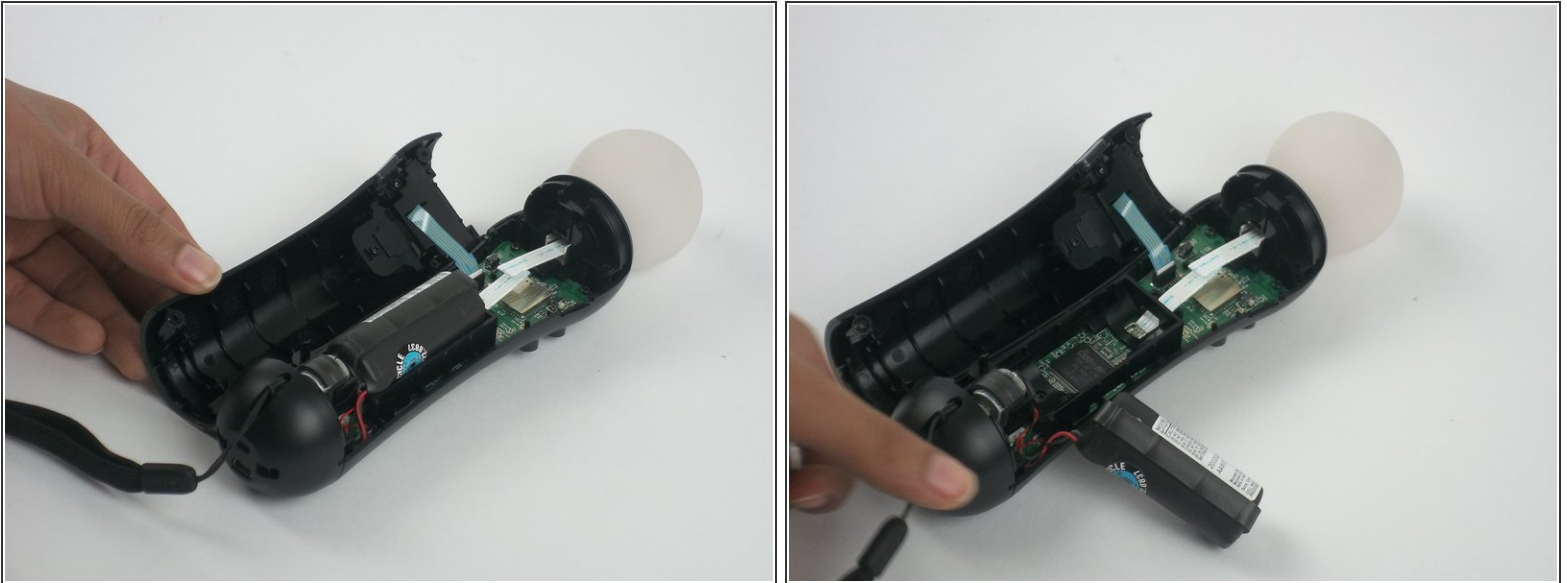
- Using a Phillips #0 screwdriver, remove the four 10mm screws located at the back of the device.

Step 3



- Insert the plastic opening tool at the indent along the front and back surfaces of the controller.
- Gently use a forward and backward motion to safely pop open the cover.
- Use your hands to further pull it apart and pop it open.

Step 4



- Once the device is opened, lift the battery out of the black plastic holder.

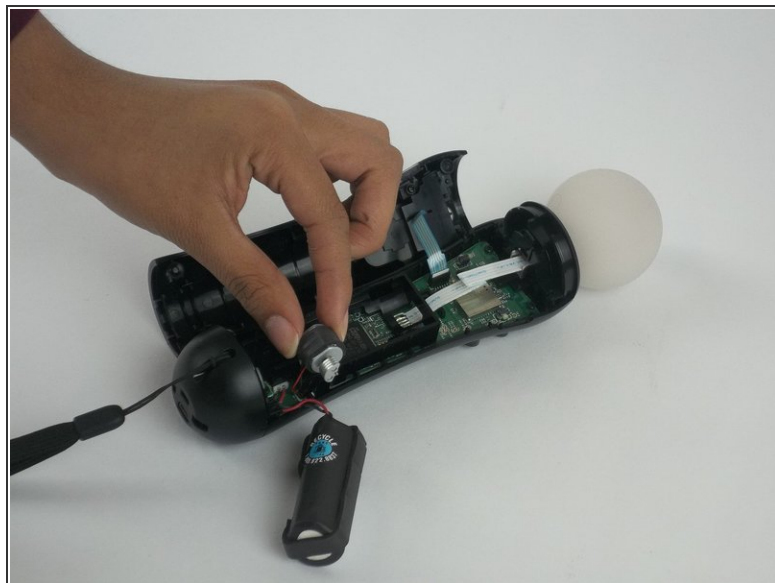
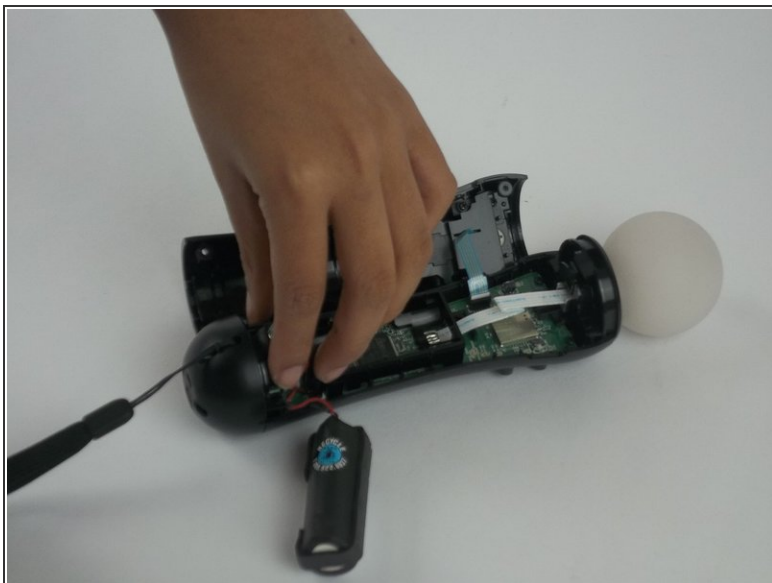
⚠ Carefully pull the battery out and ensure that it's wires are still connected to the inside.

Step 5



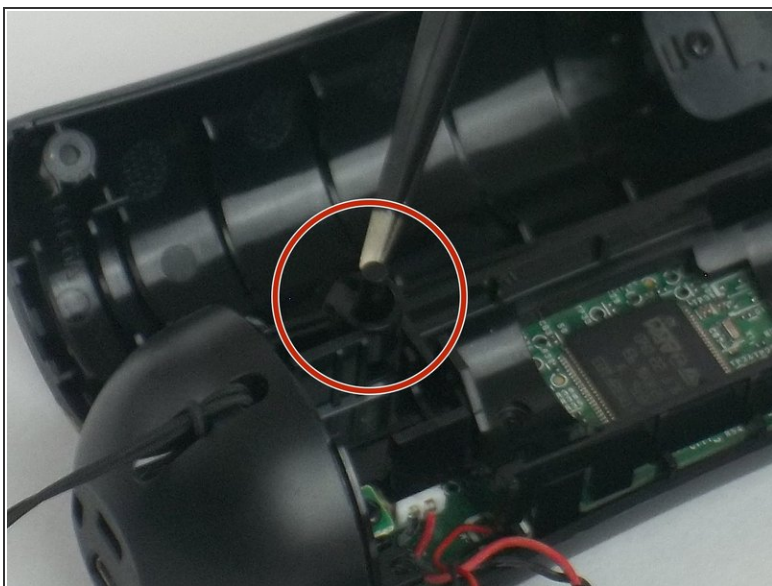
- Using a Phillips head screwdriver, remove the 9mm screw located to the right of the battery, which is connected to the inner plastic frame.
- Use the plastic opening tool to carefully take out the grey cylindrical piece (vibrator) that is also attached to a wire.

Step 6



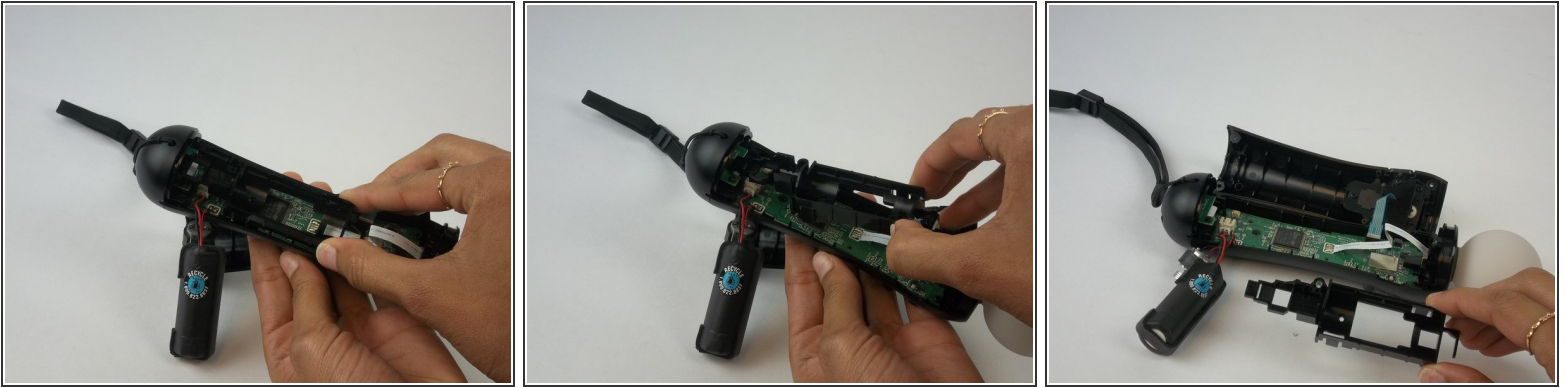
- Gently pull out the small cylindrical grey piece (vibrator).
- ❗ Removing this piece makes it easier to access the wire connection of the battery and remove it.

Step 7



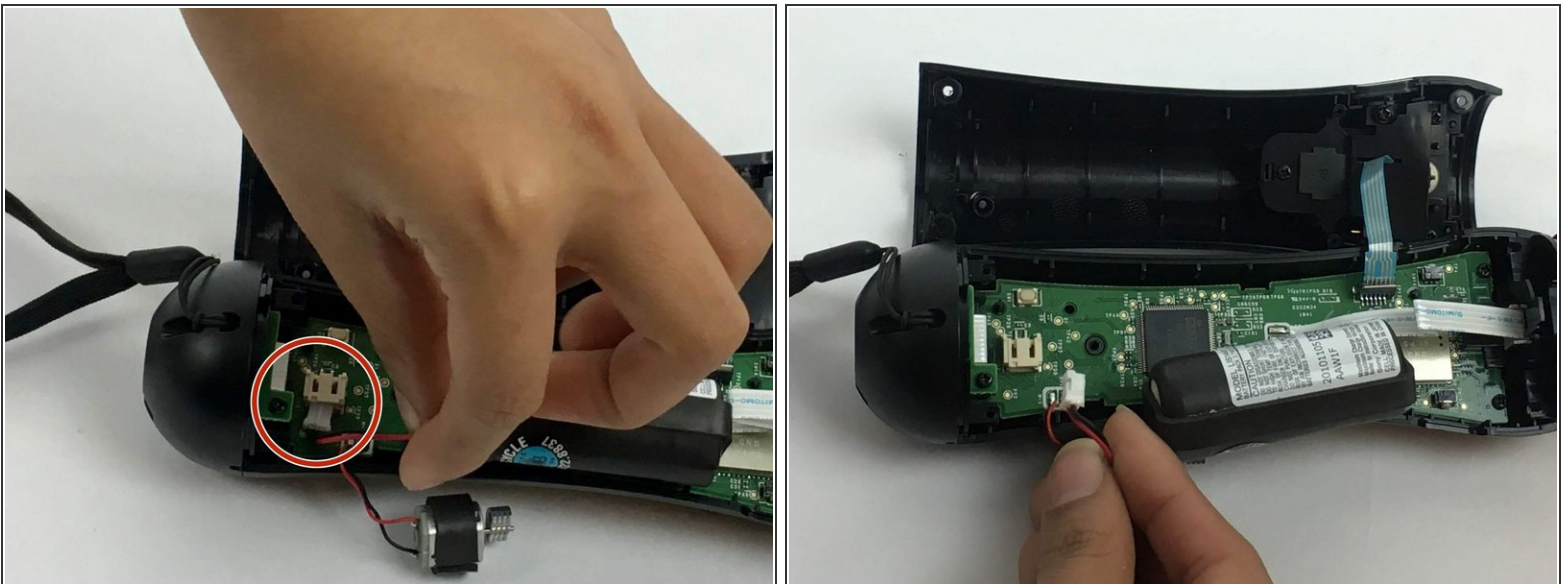
- Use tweezers to remove the small piece with a cylindrical top that is located to the left of the inner plastic frame.

Step 8



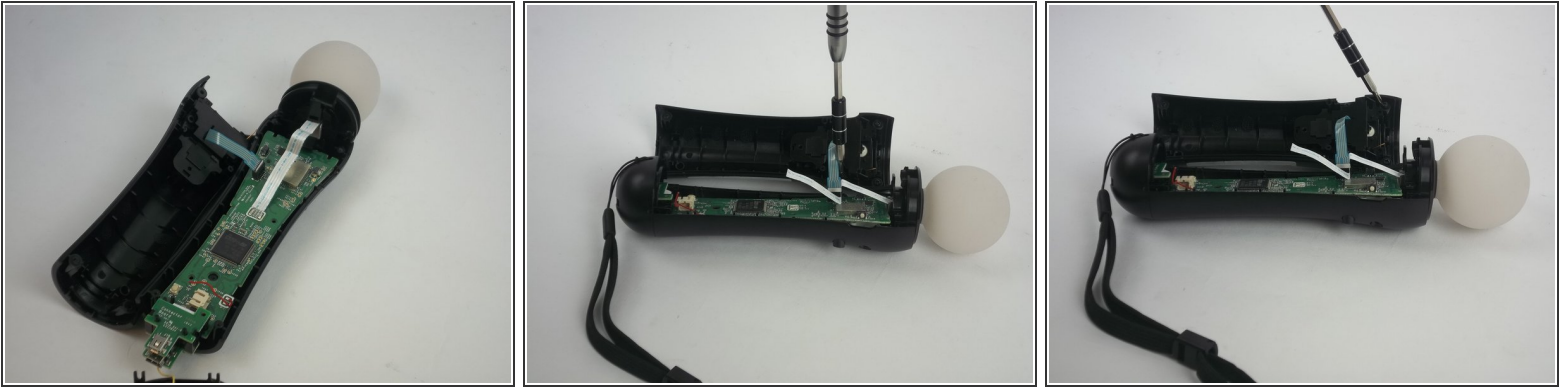
- Use one hand to hold the bottom of the device, and the other hand to squeeze the inner plastic frame.
 - While squeezing the inner plastic frame, pull it up and then pull it towards you to detach it.
- ⚠ While removing the frame, be extremely careful because it could damage the frame or the motherboard.

Step 9



- Gently pull on the end of the red and black wires which is closest to the connector to disconnect the battery.

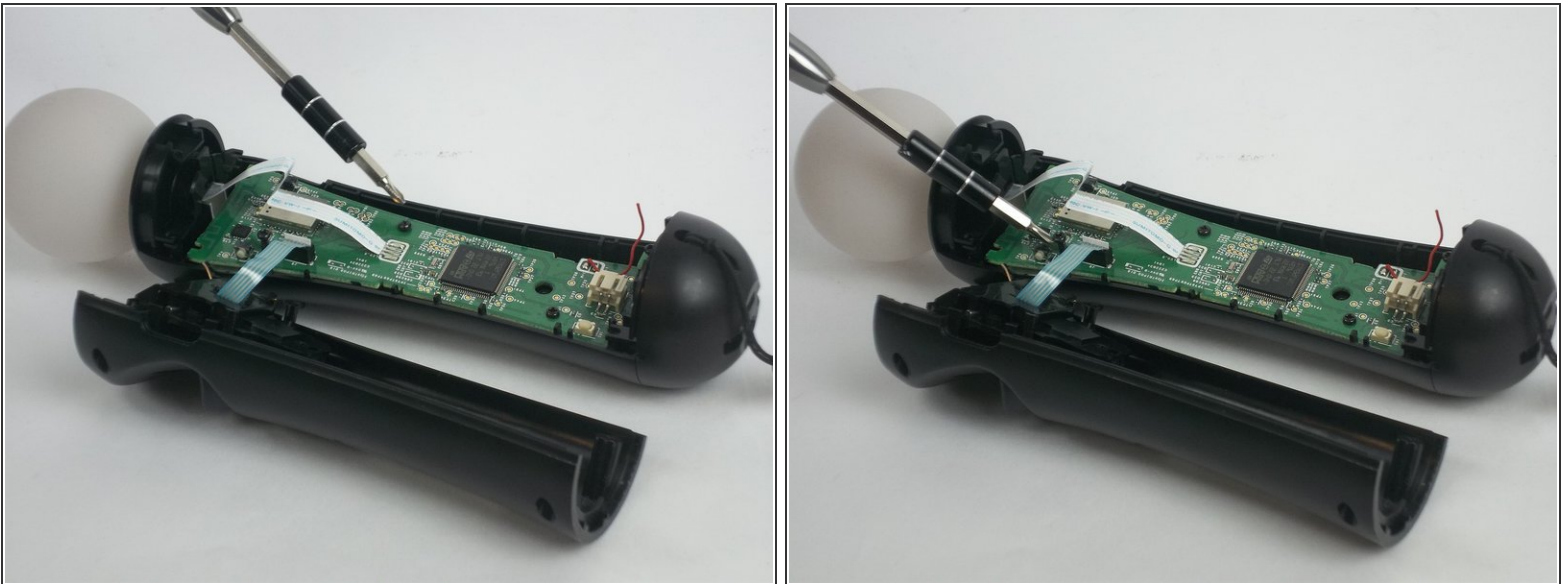
Step 10 — Motherboard



- Remove the five 1.2 mm screws from upper portion of the controller.

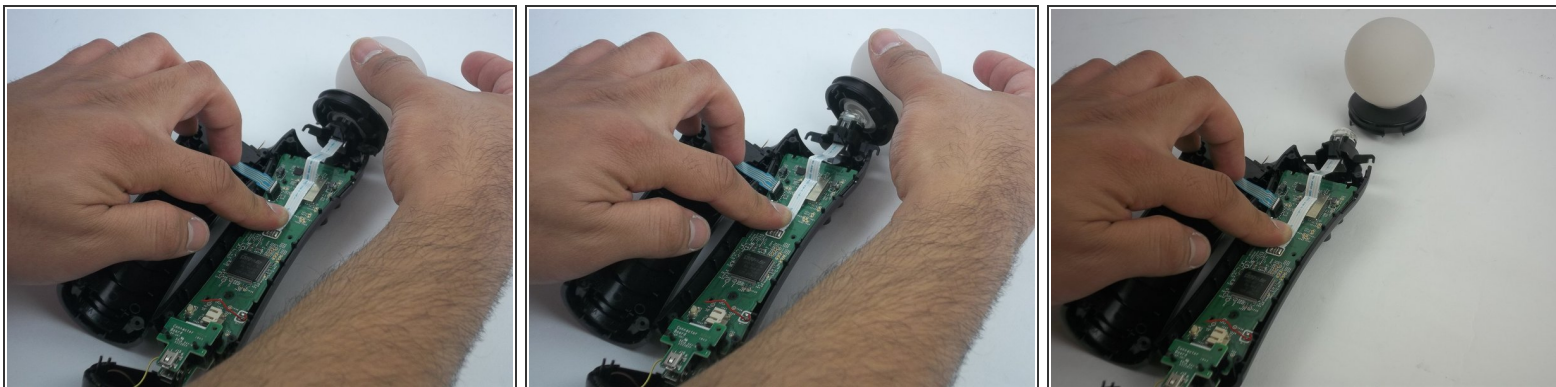
i If you are replacing the **trigger button**, continue to step 13.

Step 11



- Remove the two 1.2mm Phillips #1 screws.

Step 12



- Cautiously remove the circular white piece at the top without removing the LED inside.

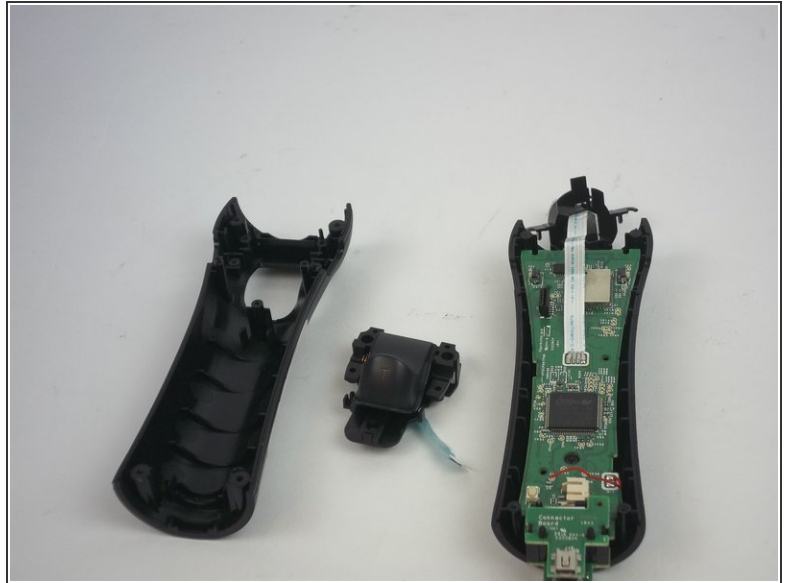
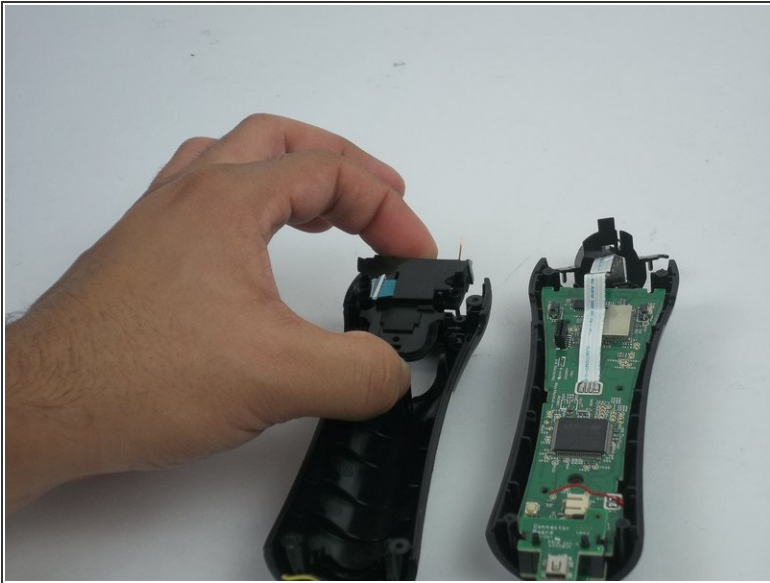
Step 13



- Remove the blue strip that is connected to the trigger button from the motherboard

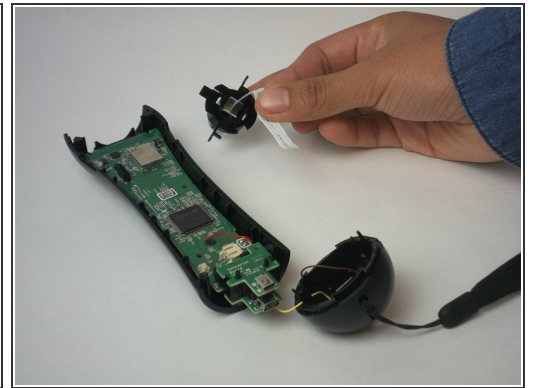
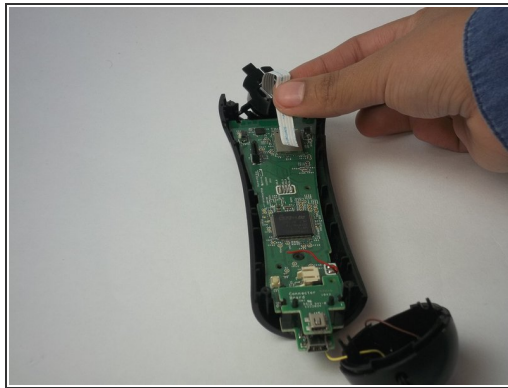
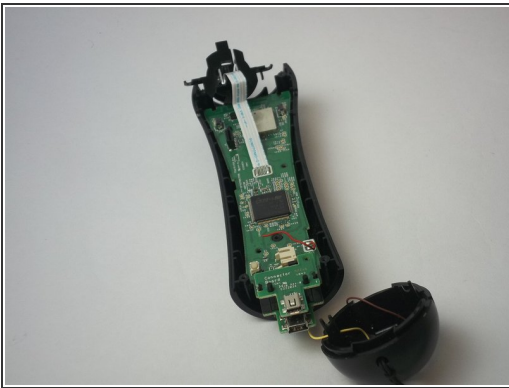
⚠ Be careful to gently detach it from the motherboard. The strip may rip if too much strength is applied.

Step 14



- Remove the trigger button from the controller.

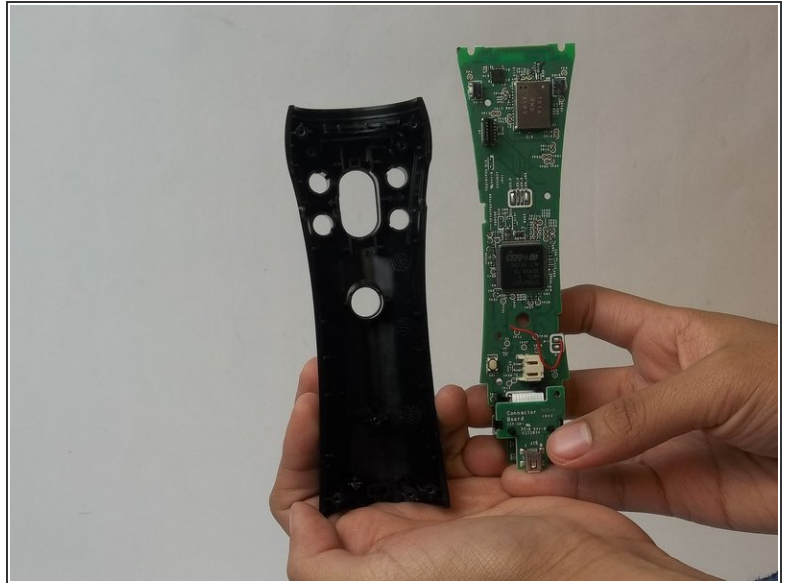
Step 15



- Remove the LED light by removing the white strip.

i If you are replacing the **LED light**, continue to [Step 17](#).

Step 16



- Remove the motherboard from the plastic case.

To reassemble your device, follow these instructions in reverse order.