



# PlayStation One Mother Board Replacement

This will guide you in replacing the Mother board of a PlayStation One.

Written By: trickster



---

## INTRODUCTION

This will guide you in replacing the Mother board of a PlayStation One.



### TOOLS:

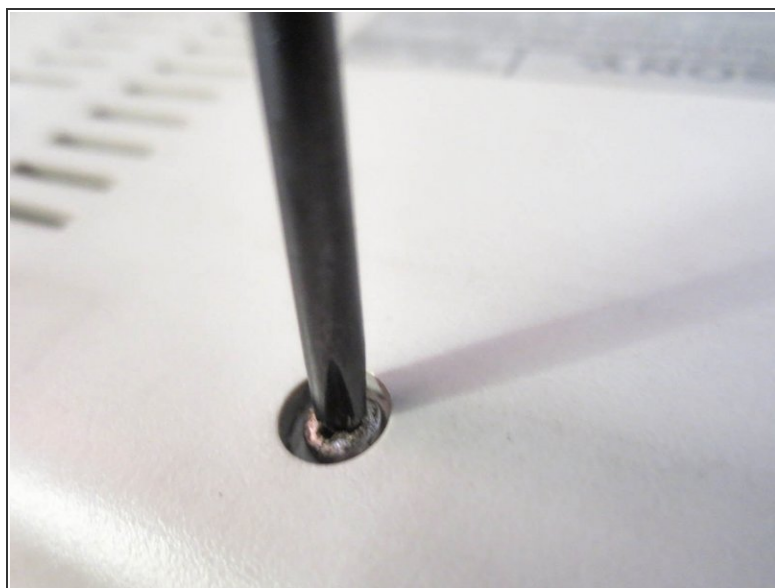
- [Phillips #1 Screwdriver](#) (1)
-

## Step 1 — Upper Case



- Remove all cables plugged into the PlayStation.

## Step 2



- Flip over the PlayStation and remove the six screws from the bottom.

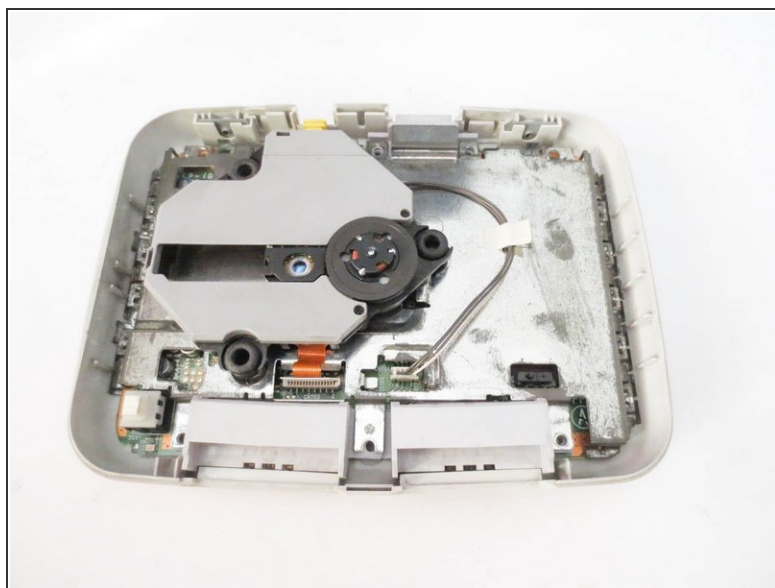
## Step 3



- Flip the PlayStation back.

⚠ There are no screws holding EVERYTHING inside the PlayStation so better hold it like a burger while flipping.

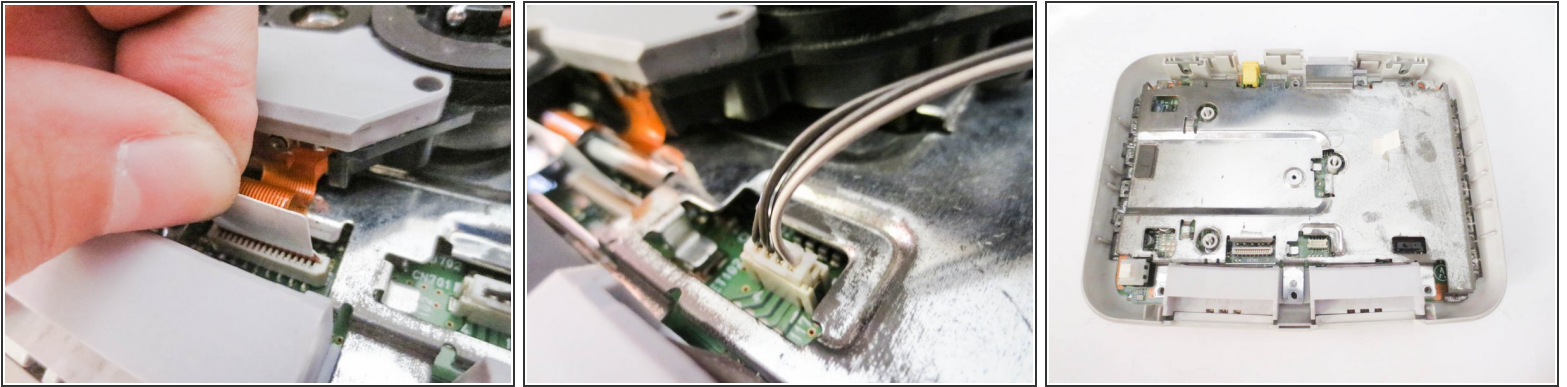
## Step 4




- Lift up and remove the upper case.



## Step 5 — Laser Assembly



- Disconnect the cables from the PSone's board.

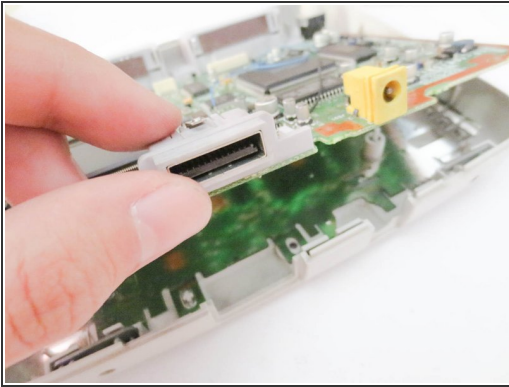
 Take extreme care when disconnecting the ribbon cable from motherboard. You risk damaging the cable if you're not careful.

## Step 6 — Mother Board



- remove the metal plate

## Step 7



- remove the motherboard by lifting the back.

**i** if you're having a hard time removing it, use your nail and lift the second controller port.

To reassemble your device, follow these instructions in reverse order.