



PlayStation Optical Drive Replacement from a SCPH-7501 or SCPH-9001

This will fix a SCPH-5501 to put a drive from a SCPH-7501 or SCPH-9001 without buying a KSM-440-ADM drive off of ebay.

Written By: Unchi





TOOLS:

- [Pro Tech Toolkit](#) (1)
-

Step 1 — Optical Drive from a SCPH-7501



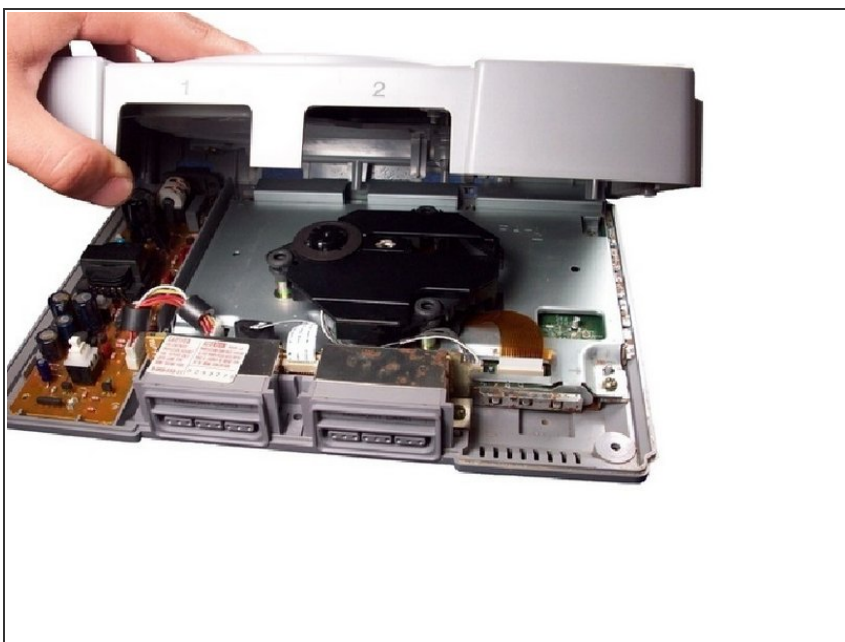
- Remove the parallel port cover on the back of the PlayStation

Step 2



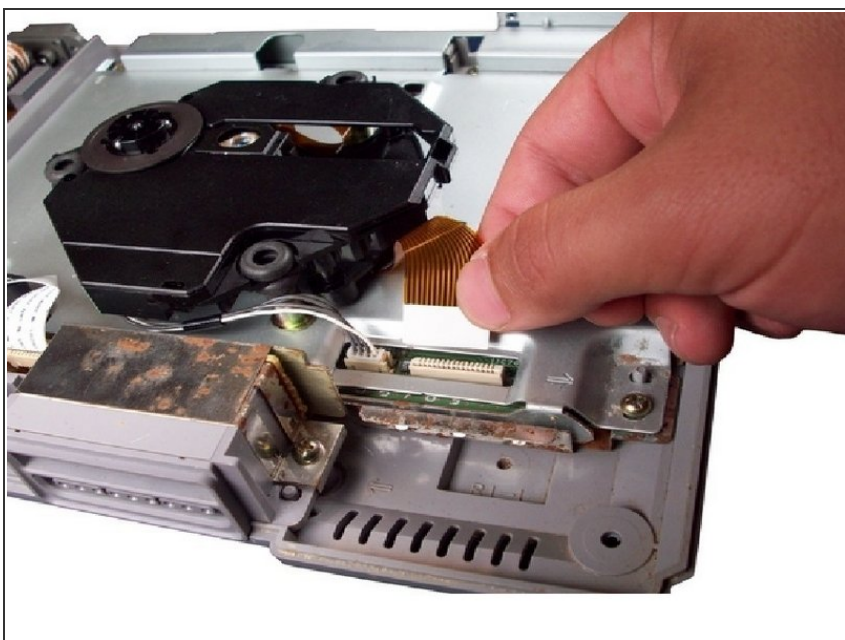
- Flip over the PlayStation and remove the six screws from the bottom.

Step 3



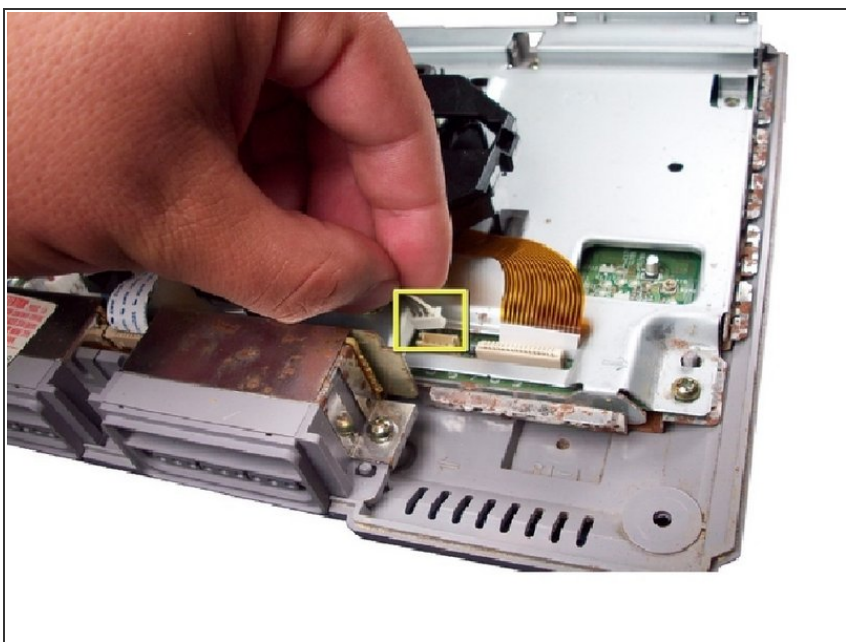
- Turn the PlayStation upright. Remove the cover by lifting it up.

Step 4



- Carefully disconnect the gold-colored ribbon cable from its connector.
- To avoid damaging the cable, pull it by the white, reinforced tab.

Step 5



- Disconnect the second cable by pulling up on the plastic connector at the end.

Step 6



- Lift the optical drive off of the PlayStation.

Step 7



- Remove the two screws and take off the bottom piece for your new Optical drive from the old one.

Step 8



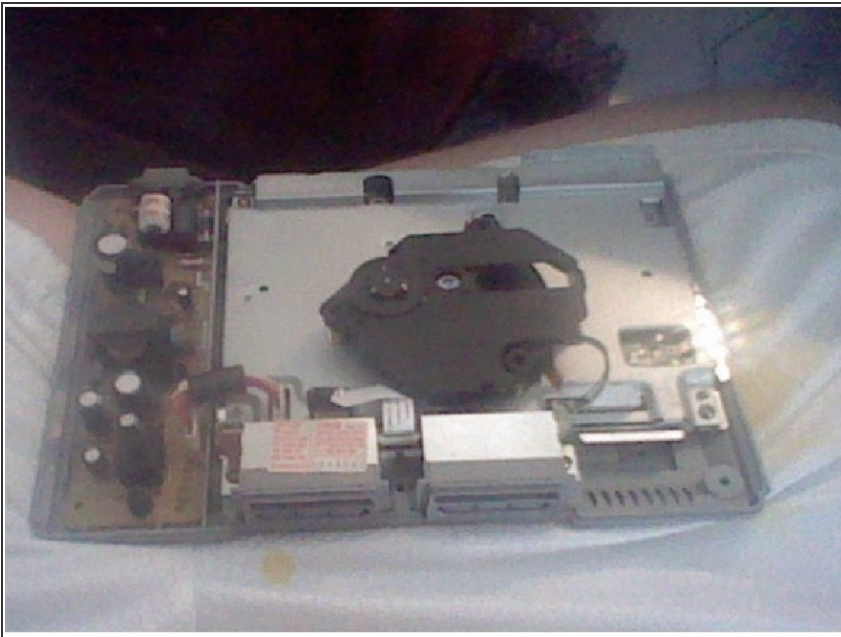
- Take the new lens either from a SCPH-7501 or SCPH-9001.
- To avoid damaging the cable, Gently lift on this gold-colored cable that has a pot screw on it and lift it, but not too much.

Step 9



- Take the bottom piece and screw the two screws on the new Optical Drive.

Step 10



- Plug the cables back in. Your work should look like this. Put it back together, plug it in, turn it on and see if it works.

To reassemble your device, follow these instructions in reverse order.