



INTRODUCTION

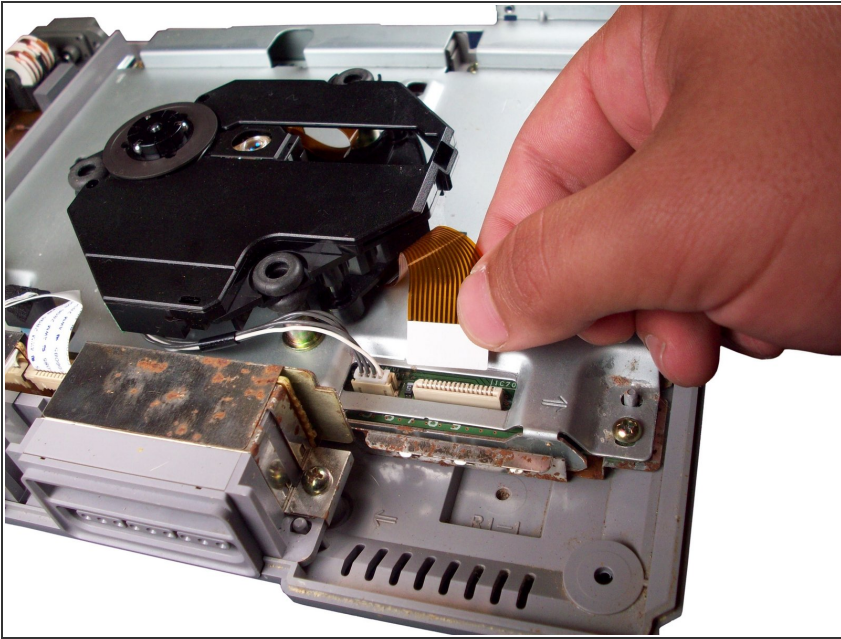
This will guide you through the process of replacing your PlayStation's optical drive.



TOOLS:

- [Phillips #1 Screwdriver](#) (1)
-

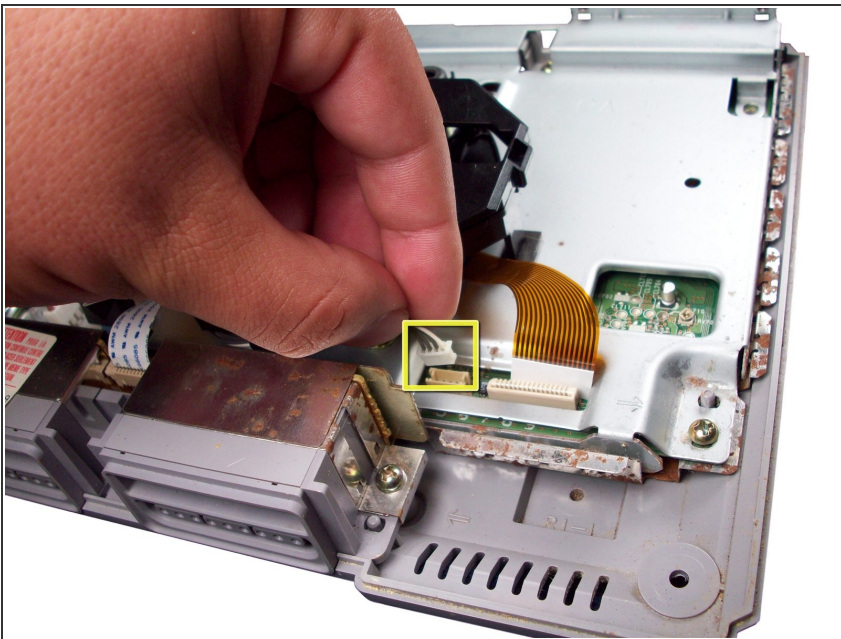
Step 1 — Optical Drive



- Carefully disconnect the gold-colored ribbon cable from its connector.

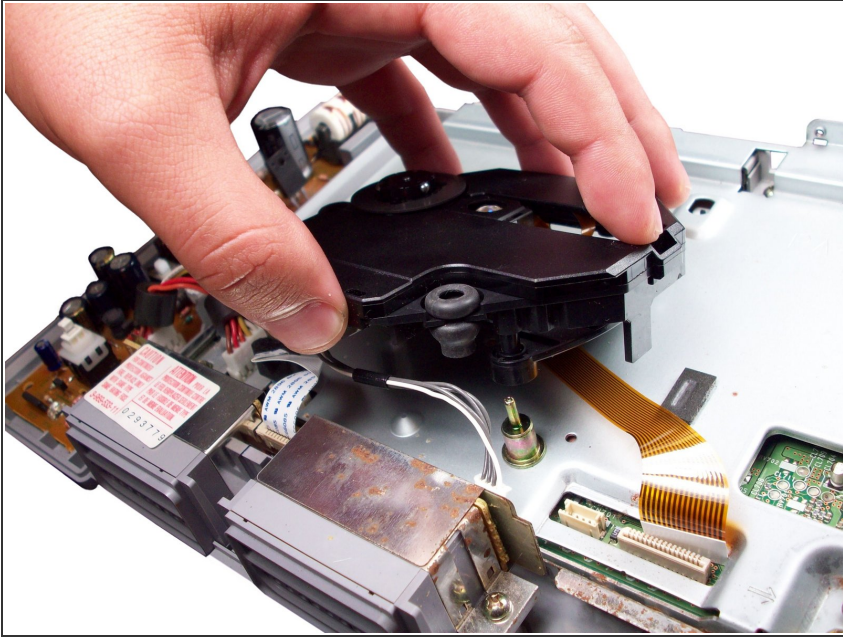
⚠ To avoid damaging the cable, pull it by the white, reinforced tab.

Step 2



- Disconnect the second cable by pulling up on the plastic connector at the end.

Step 3



- Lift the optical drive off of the PlayStation.

To reassemble your device, follow these instructions in reverse order.