



# PlayStation VR Cooling Fan Replacement

This guide will show you how to replace the cooling fan component of the PlayStation VR

Written By: Sarah Shand



## INTRODUCTION

A damaged or broken cooling fan can make your system overheat so it is important to replace it if that happens in order to prevent any further damage to the system.

---

### TOOLS:

- [iFixit Opening Tools](#) (1)
  - [Phillips #000 Screwdriver](#) (1)
  - [Tweezers](#) (1)
-

## Step 1 — Cooling Fan



- On one side of the console (the side adjacent to the fan vent), there will be two 6 mm screws. Unscrew them with a PH #000 screwdriver.

## Step 2



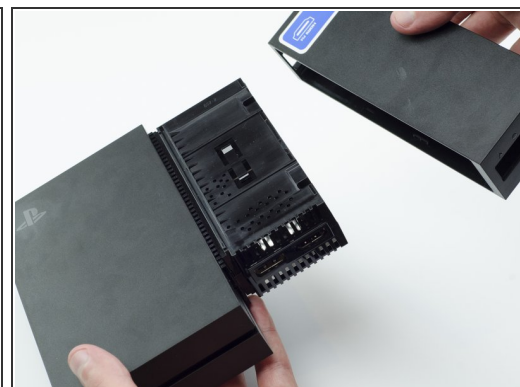
- Press and slide the side panel (it will have the two ports) back to reveal an additional 6 mm screw.
- Unscrew the 6mm screw with a PH #000 screwdriver.

### Step 3




- Slide the panel back into place.

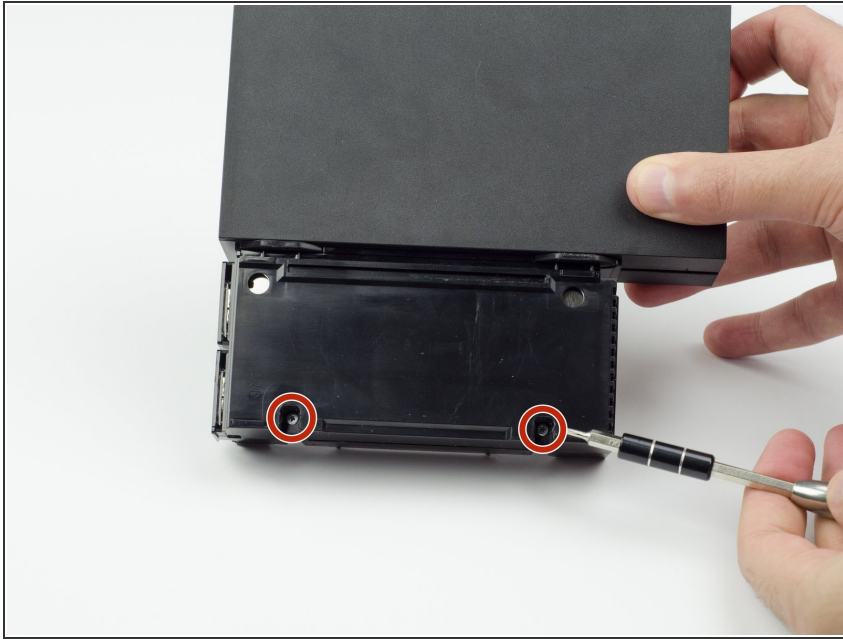
### Step 4



- Using a plastic opening tool, carefully pry the panel from the main console to reveal the HDMI ports.

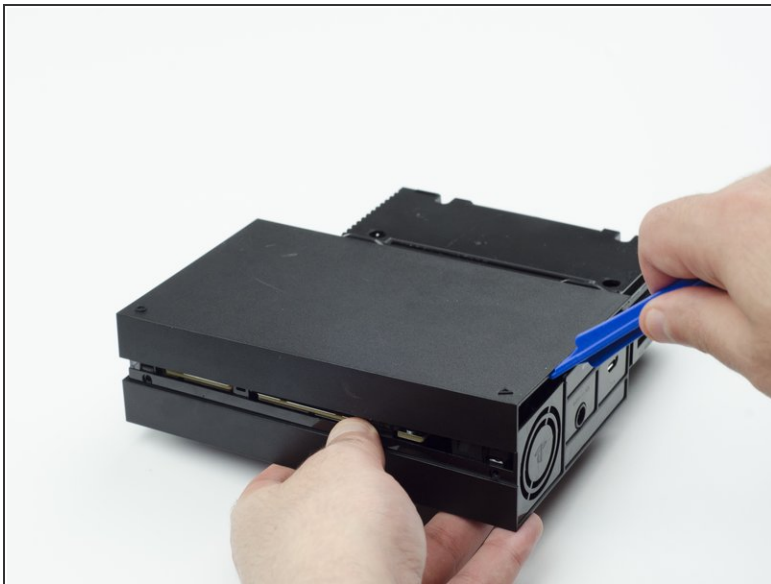
 You will probably need to lift it on both sides in order for the panel to come loose.

## Step 5



- Turn the console over.
- Unscrew the two 9 mm screws with a PH #000 screwdriver.

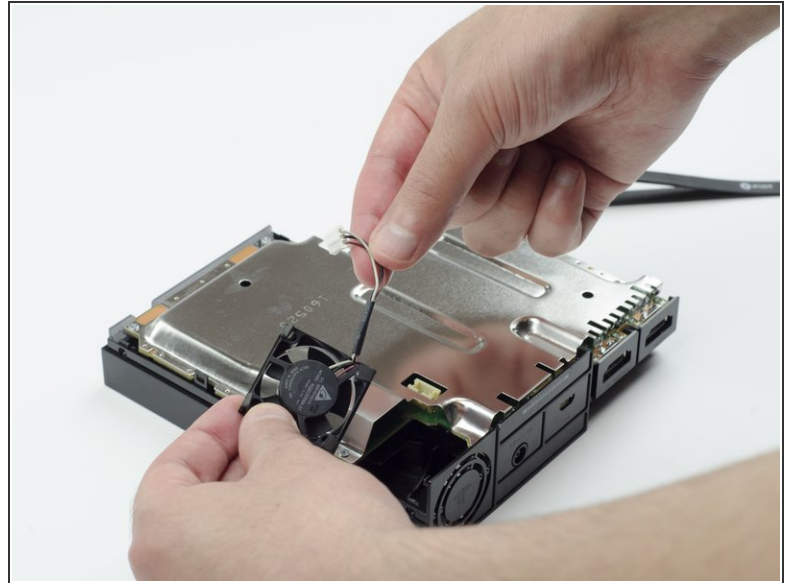
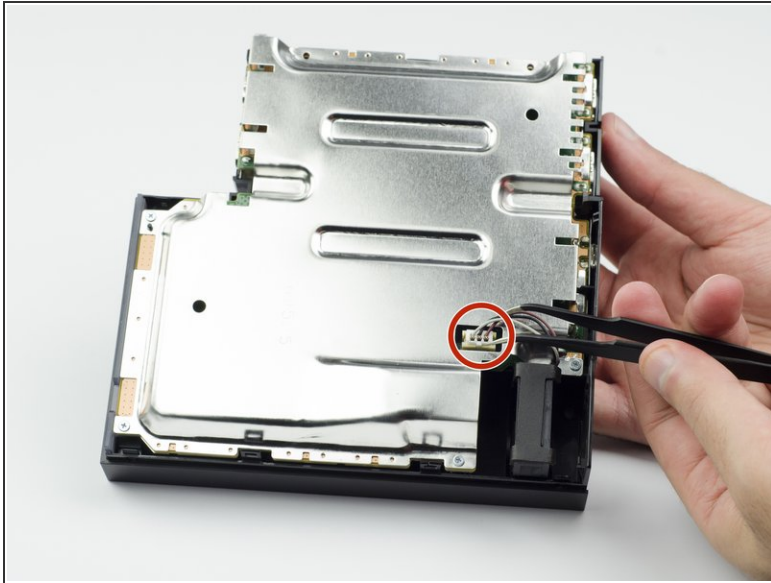
## Step 6



- With the plastic opening tool, carefully pry the console shell panel free and lift it away.



## Step 7



- Using tweezers, carefully pull the multi colored bundled cable from its port connecting the fan to the console.
- Carefully lift the fan and its wiring from the device.
- ⓘ Be mindful of damaging the wires.
- ⚠ Take care to keep your fingers away from the fan blades.

To reassemble your device, follow these instructions in reverse order.