



# PlayStation VR LED Light Tracker Replacement

This guide will show you how to replace the LED tracker in the PlayStation VR Headset.

Written By: Sarah Shand



---

## INTRODUCTION

This guide will provide instructions for removing and replacing the LED of the PlayStation VR Headset. This will require you to open the headset up, which may seem daunting at first, but can easily be done.

---

### TOOLS:

- [iFixit Opening Tools](#) (1)
  - [Phillips PH000 Screwdriver](#) (1)
-

## Step 1 — LED Light Tracker



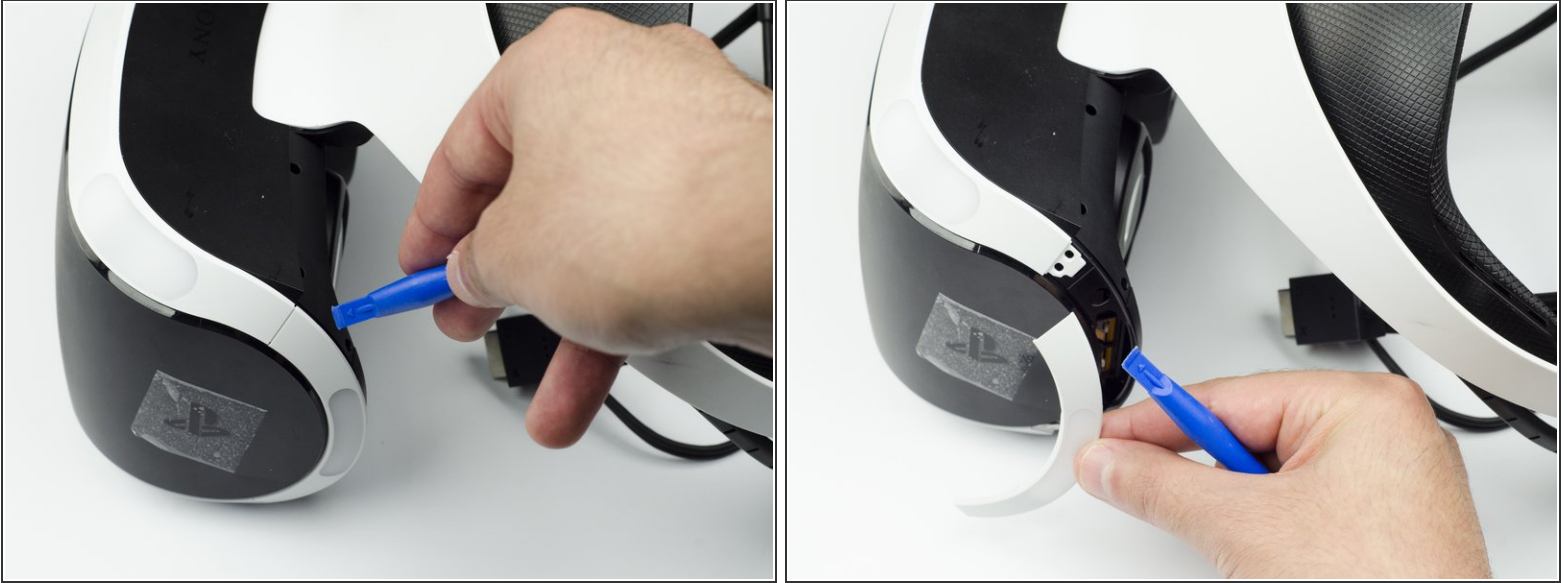
- Peel back the rubber covering around the lenses to remove the surrounding plastic eyepieces.

## Step 2



- Unscrew four 13 mm screws with a PH #000 screwdriver.

### Step 3



- Using the plastic opening tool, carefully pry the white plastic panel free from the side of the headset. Repeat this action for the opposite side.

### Step 4



- Use the plastic opening tool to pry the top white plastic panel free from the headset.
- ⓘ Do not try to remove the bottom plastic panel. There is a screw attaching it that must be removed first.
- ⓘ There may be a small amount of adhesive attaching the top panel to the headset, in which case you may need to use a bit more force to remove the panel.



## Step 5



- Flip the headset over.
- Using a PH #000, unscrew the 7 mm screw found on the bottom of the headset.

## Step 6



- Using the plastic opening tool, pry the bottom white plastic panel loose and remove it from the headset.
- ⓘ There is adhesive attaching the panel to the headset, in which case it will take more force to remove the panel.

## Step 7



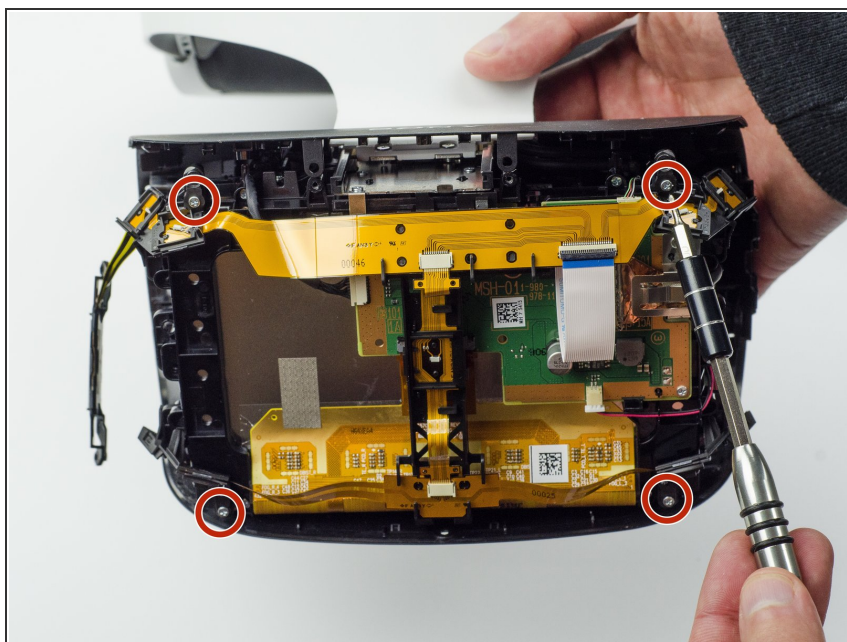
- Unscrew the two 7 mm screws from the top of the headset.

## Step 8



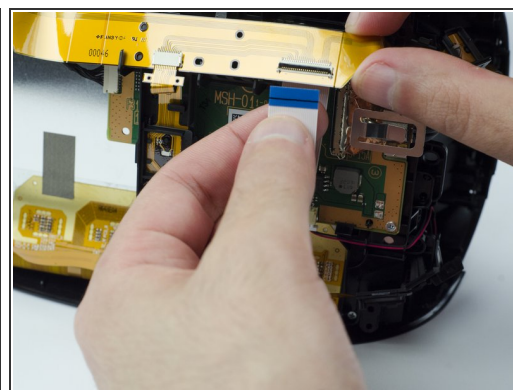
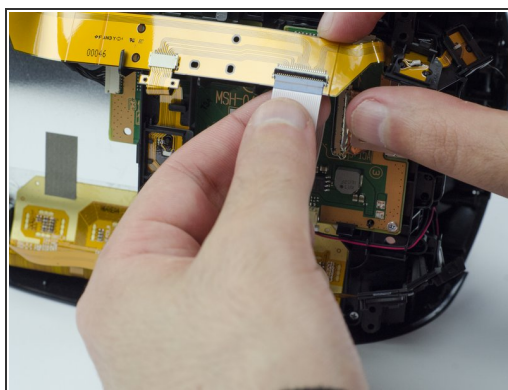
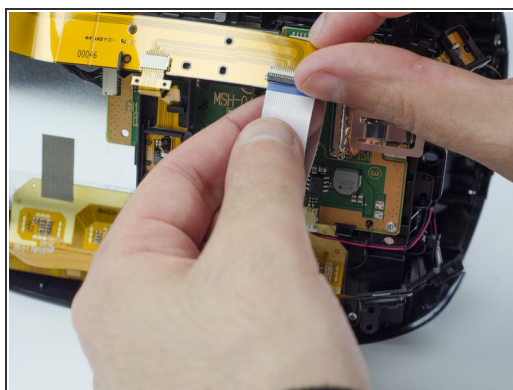
- Using your fingers, carefully pry the black front panel free from the headset.
- ⓘ We recommend that you start the removal from the sides by pulling them forward.
- ⓘ There is adhesive holding the front panel in place, which means you will need a bit of extra force to remove it.

## Step 9



- Unscrew the four silver 6 mm screws in each corner using a PH #000 screwdriver.

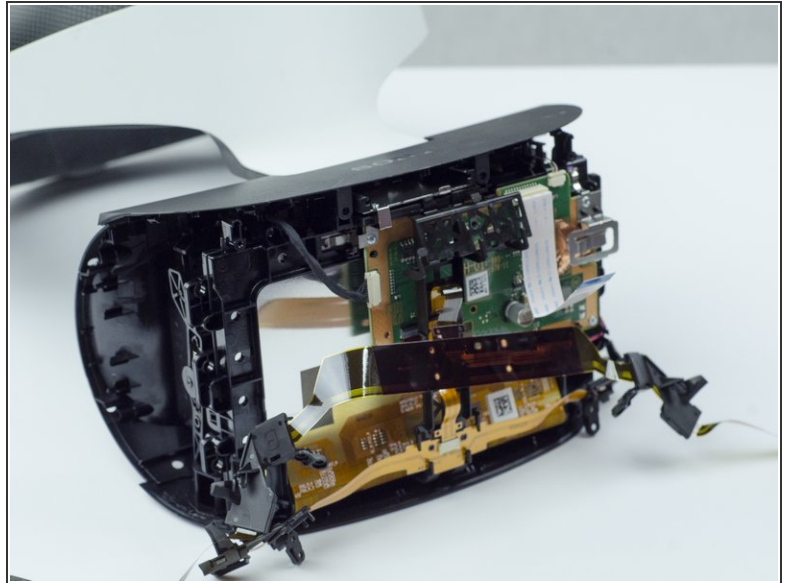
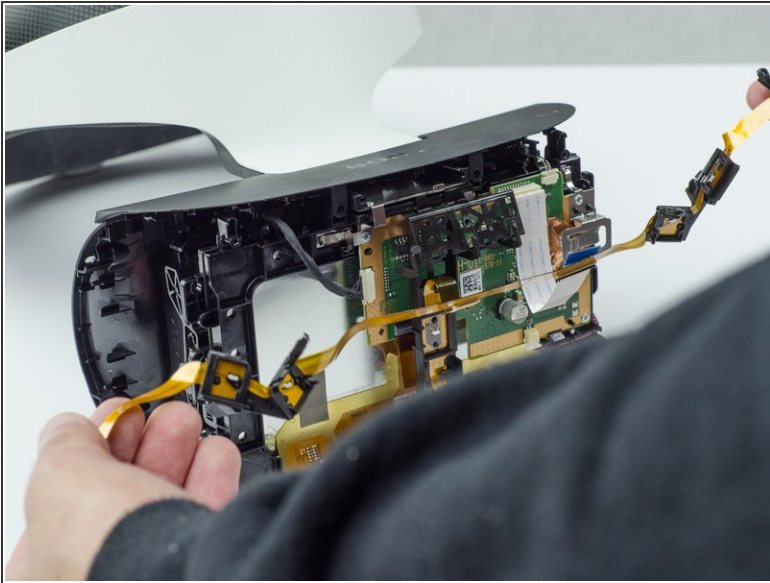
## Step 10



- Lift the small silver latch attaching the ZIF (zero insertion force) connector to the circuit board.
- Carefully pull the end of the white ribbon connector from its slot.
- ⓘ Be careful not to damage or dirty the ribbon connector.



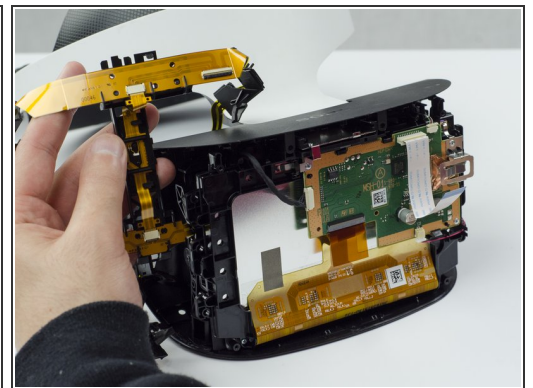
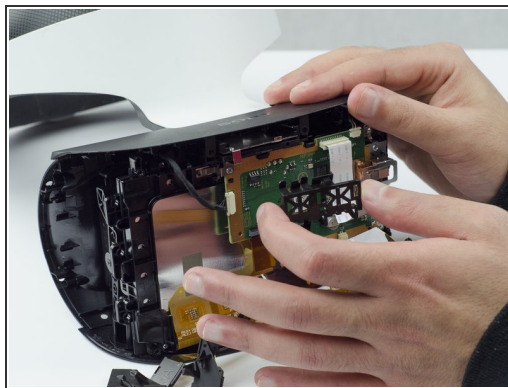
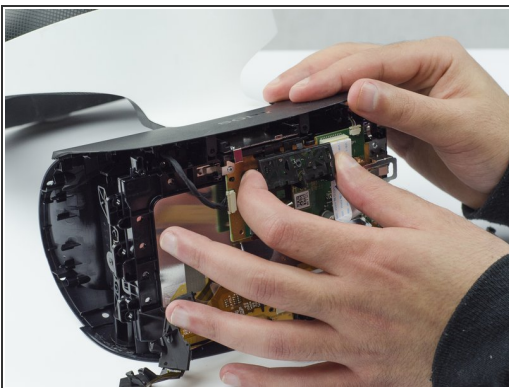
## Step 11



- Unhitch the yellow led connector ribbon and move it aside.

**i** Be careful not to damage or dirty the ribbon connector.

## Step 12



- Carefully pry the black plastic piece attaching the yellow ribbon to the headset away from the green circuit board.
- Remove the yellow LED ribbons and black plastic connecting piece from the headset.

To reassemble your device, follow these instructions in reverse order.