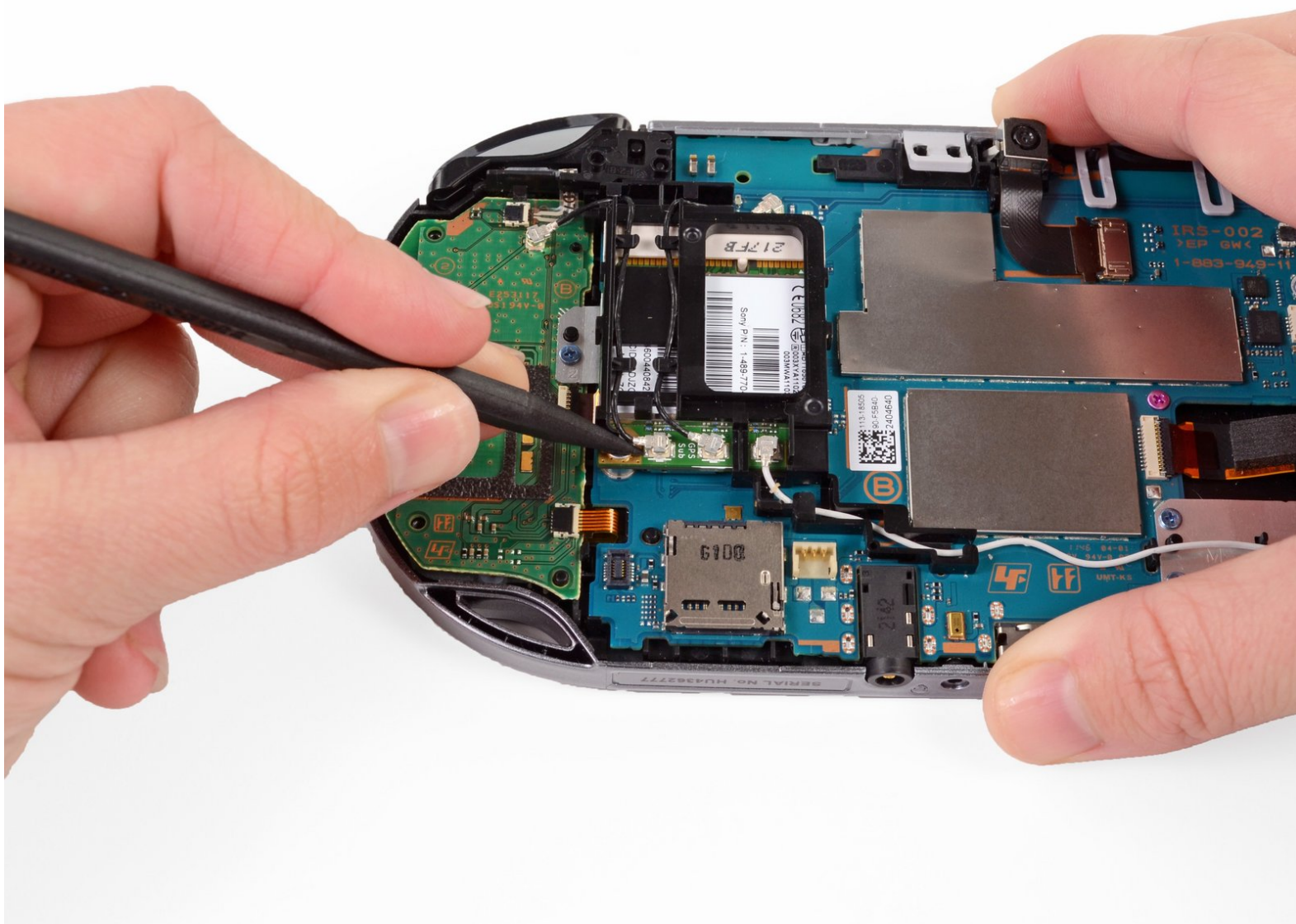




# PlayStation Vita 3G Antenna Cable Replacement

Install the 3G antenna cable on the PlayStation Vita.

Written By: Brittany McCrigler



---

## INTRODUCTION

This guide takes you through the process of installing the 3G antenna cable on the PlayStation Vita. This is the black antenna cable on the left of the wireless.

---

### TOOLS:

- [Phillips #00 Screwdriver](#) (1)
  - [iFixit Opening Tools](#) (1)
  - [Spudger](#) (1)
-

## Step 1 — Case Separation



⚠ Power off and remove the memory card.

- Using a Phillips #00 screwdriver, remove the four 6.4mm screws on the back casing.

## Step 2



- Using your fingernail or a spudger, pry open the accessory port cover on the top of the device.
- Using a Phillips #00 screwdriver, remove the two 5.4mm screws hidden beneath the accessory port cover.

### Step 3



- Remove the two 5.4mm Phillips #00 screws on the bottom of the device near the charging port.

### Step 4



- Beginning at the sides of the device, use a plastic opening tool to separate the front and rear cases.
  - Continue working your way around the device gently prying it open.
- ⚠ There are still wires holding the front and rear cases together. You may damage the connections if you yank the cases completely apart.



## Step 5



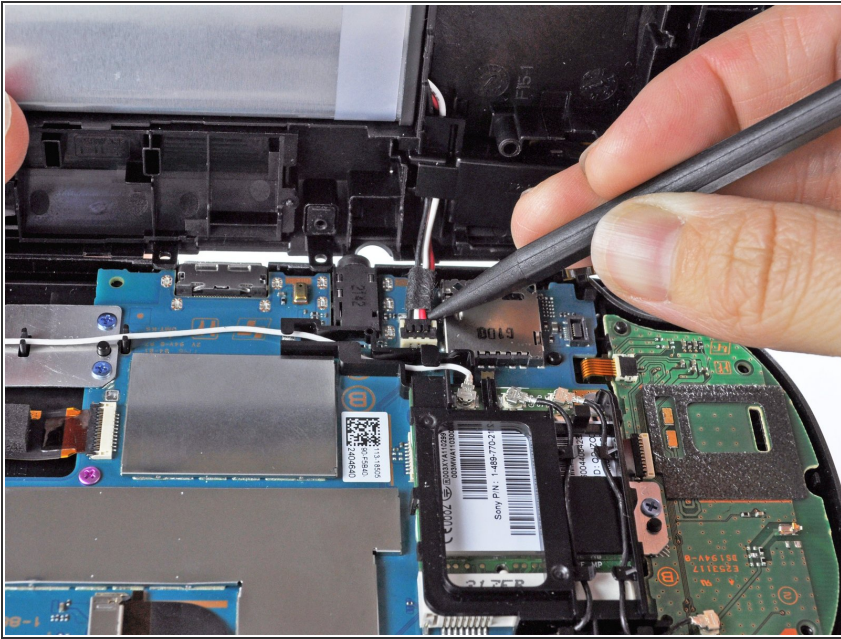
- Gently separate the two cases, minding the battery and the touch screen controller connectors holding the two cases together.

## Step 6



- Using a spudger, free the touch screen controller flex cable by gently prying up the connection.

## Step 7



- Free the battery cable by gently prying up on the connection with a spudger.

## Step 8



- Separate the front and rear cases.

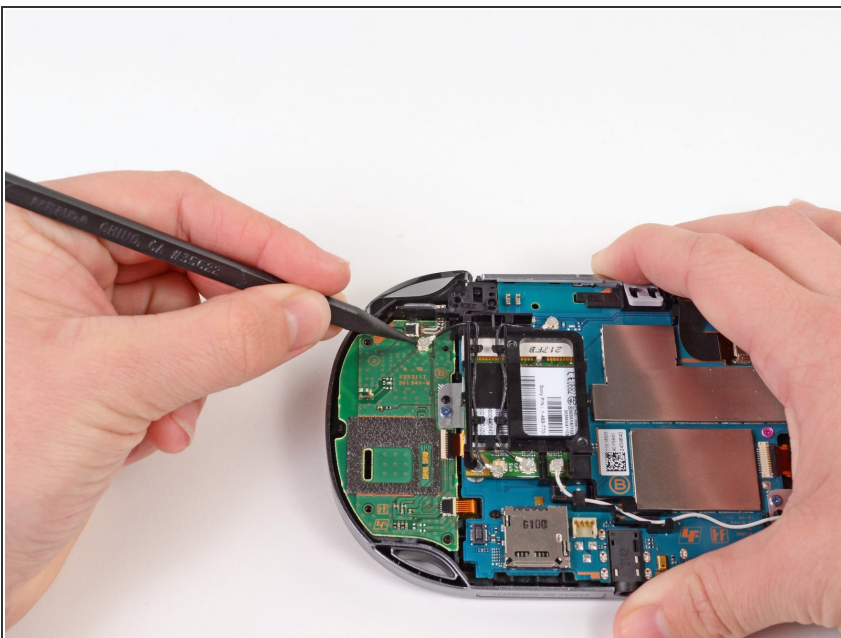


## Step 9 — 3G Antenna Cable



- Using the pointy end of a spudger, gently pry the 3G antenna cable off of the wireless card.

## Step 10



- Using the pointy end of a spudger, gently pry the 3G antenna cable off the right button board.
- Deroute the 3G antenna cable out of the casing and remove it.

To reassemble your device, follow these instructions in reverse order.