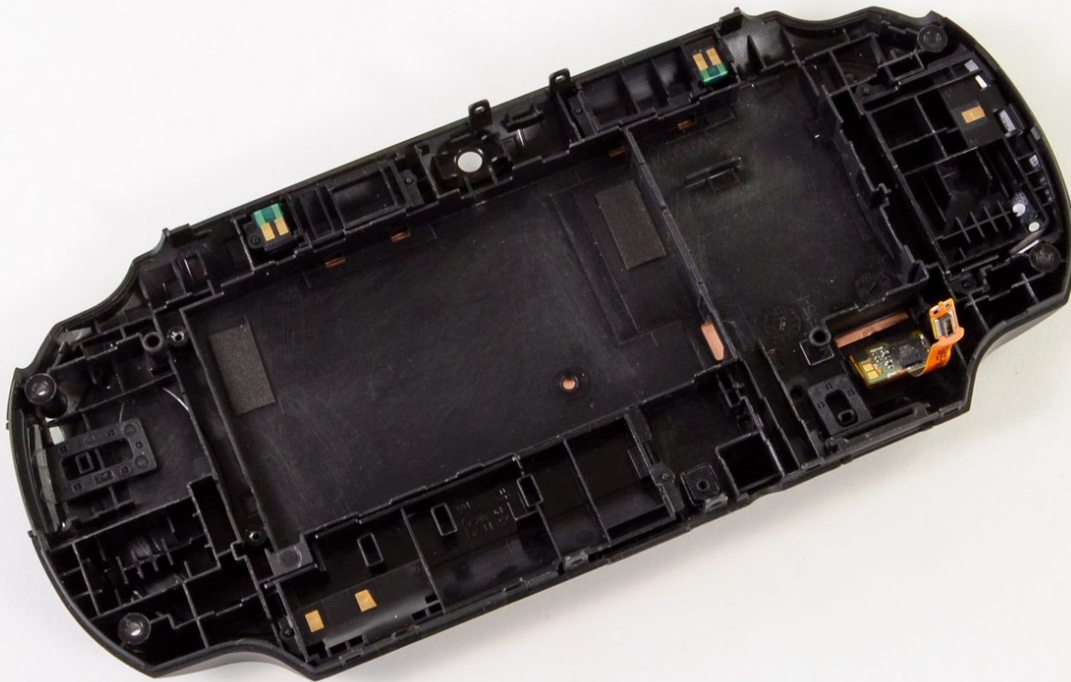




PlayStation Vita Rear Panel Replacement

Install the Rear Panel on the PlayStation Vita.

Written By: Brittany McCrigler



INTRODUCTION

This guide takes you through the process of installing the rear panel. The rear panel houses the rear touch pad.



TOOLS:

- [Phillips #00 Screwdriver](#) (1)
- [iFixit Opening Tools](#) (1)
- [Spudger](#) (1)




PARTS:

- [PlayStation Vita Accessory Port Cover](#) (1)
- [PlayStation Vita Game Cartridge Cover](#) (1)
- [PlayStation Vita Left Touchpad Sensor](#) (1)
- [PlayStation Vita \(3G\) Rear Panel](#) (1)

Step 1 — Case Separation



 Power off and remove the memory card.

- Using a Phillips #00 screwdriver, remove the four 6.4mm screws on the back casing.

Step 2



- Using your fingernail or a spudger, pry open the accessory port cover on the top of the device.
- Using a Phillips #00 screwdriver, remove the two 5.4mm screws hidden beneath the accessory port cover.

Step 3



- Remove the two 5.4mm Phillips #00 screws on the bottom of the device near the charging port.

Step 4



- Beginning at the sides of the device, use a plastic opening tool to separate the front and rear cases.
 - Continue working your way around the device gently prying it open.
- ⚠ There are still wires holding the front and rear cases together. You may damage the connections if you yank the cases completely apart.

Step 5



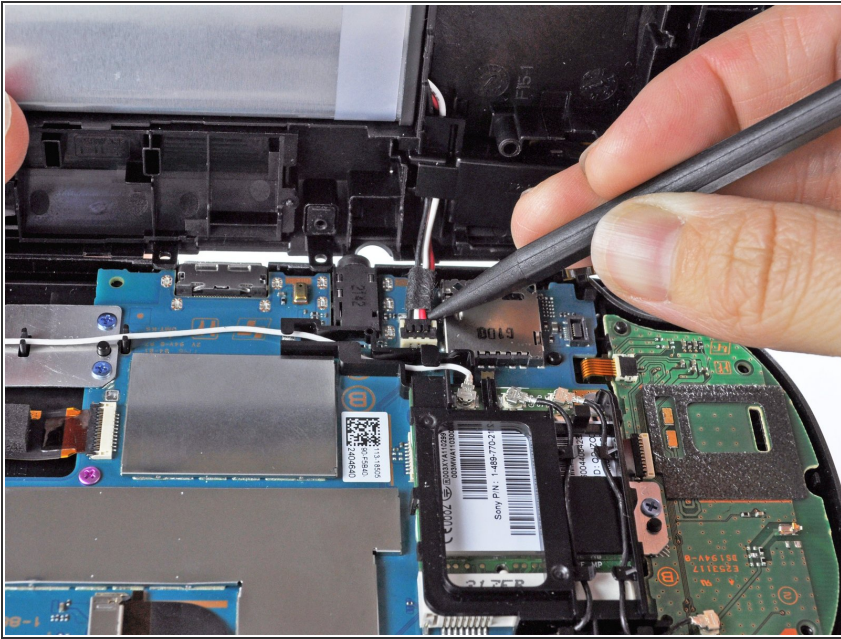
- Gently separate the two cases, minding the battery and the touch screen controller connectors holding the two cases together.

Step 6



- Using a spudger, free the touch screen controller flex cable by gently prying up the connection.

Step 7



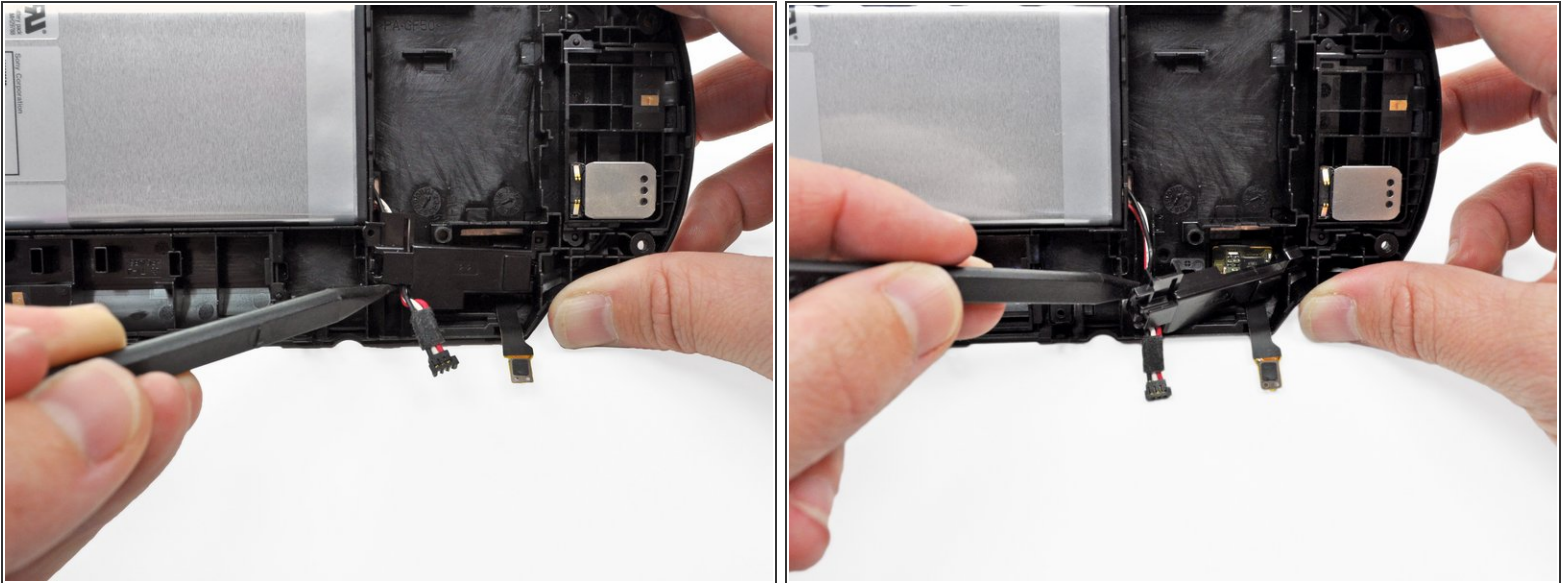
- Free the battery cable by gently prying up on the connection with a spudger.

Step 8



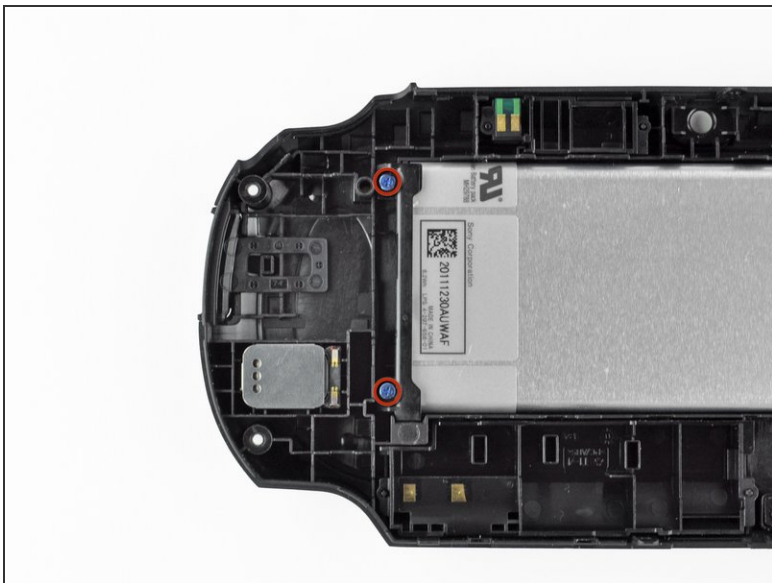
- Separate the front and rear cases.

Step 9 — Battery



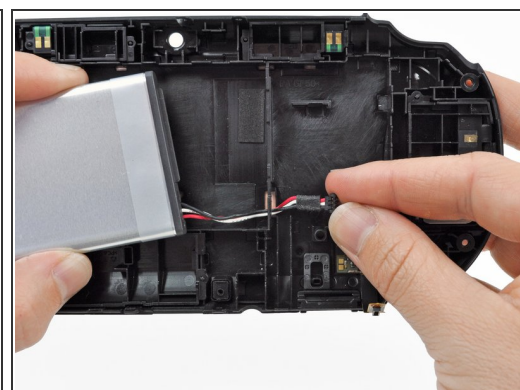
- With the help of a spudger, gently pry off and remove the battery cable retainer on the back casing assembly.
 - ⓘ The easiest access to the battery cable retainer is where the battery cable comes out.
 - ⓘ You can also use the two small tabs on the side of the cable retainer. Locate the tabs and release one at a time. Be a little careful not to push the cover in and re-lock it.

Step 10



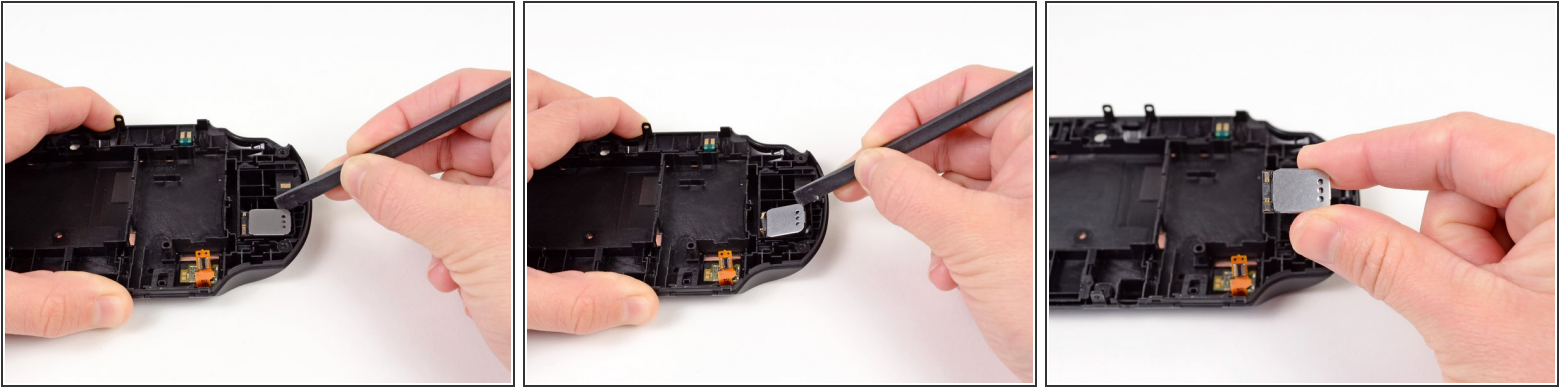
- Using a Phillips #00 screwdriver, remove the two 5.0mm blue battery case screws.
- Remove the plastic battery retaining bar.

Step 11



- Using your finger or a spudger, lift the battery out and remove it.
- Guide the battery wires through the hole in the back casing as you remove the battery.

Step 12 — Rear Panel



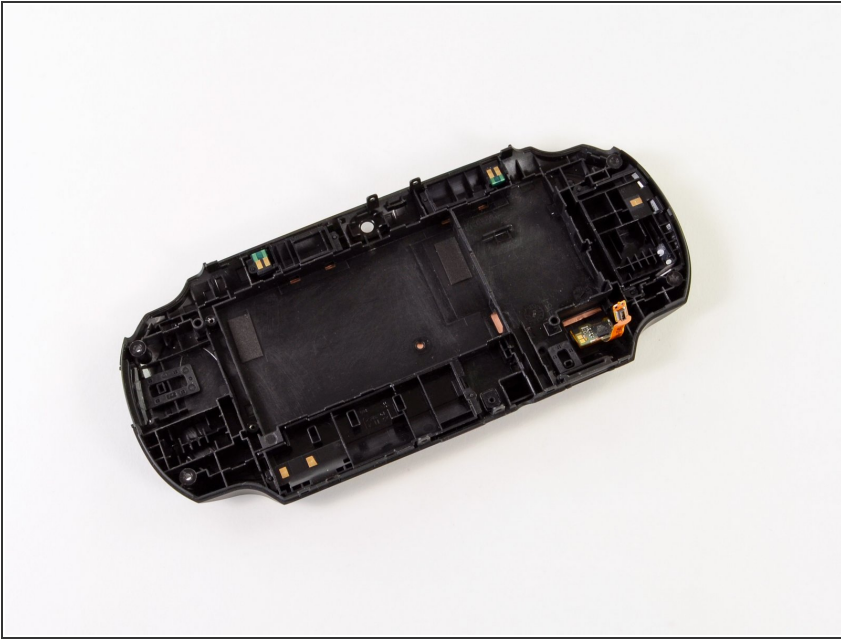
- Slide the spudger between the right speaker and the rear casing.
- Using a spudger, gently peel up the right speaker from the light adhesive connecting it to casing.
- Remove the right speaker.

Step 13



- Slide the spudger between the left speaker and the rear casing.
- Using a spudger, gently peel up the left speaker from the light adhesive connecting it to casing.
- Remove the left speaker.

Step 14



- The rear panel remains.

To reassemble your device, follow these instructions in reverse order.