



# PlayStation Vita Wireless Card Replacement

Install a Wireless Card on the PlayStation Vita

Written By: Brittany McCrigler



# INTRODUCTION

This guide takes you through the process of installing the Wireless Card on the PlayStation Vita.



## TOOLS:

- [Phillips #00 Screwdriver](#) (1)
- [iFixit Opening Tools](#) (1)
- [Spudger](#) (1)



## PARTS:

- [PlayStation Vita \(3G\) Wi-Fi Board](#) (1)

## Step 1 — Case Separation



⚠ Power off and remove the memory card.

- Using a Phillips #00 screwdriver, remove the four 6.4mm screws on the back casing.

## Step 2



- Using your fingernail or a spudger, pry open the accessory port cover on the top of the device.
- Using a Phillips #00 screwdriver, remove the two 5.4mm screws hidden beneath the accessory port cover.



### Step 3



- Remove the two 5.4mm Phillips #00 screws on the bottom of the device near the charging port.

### Step 4



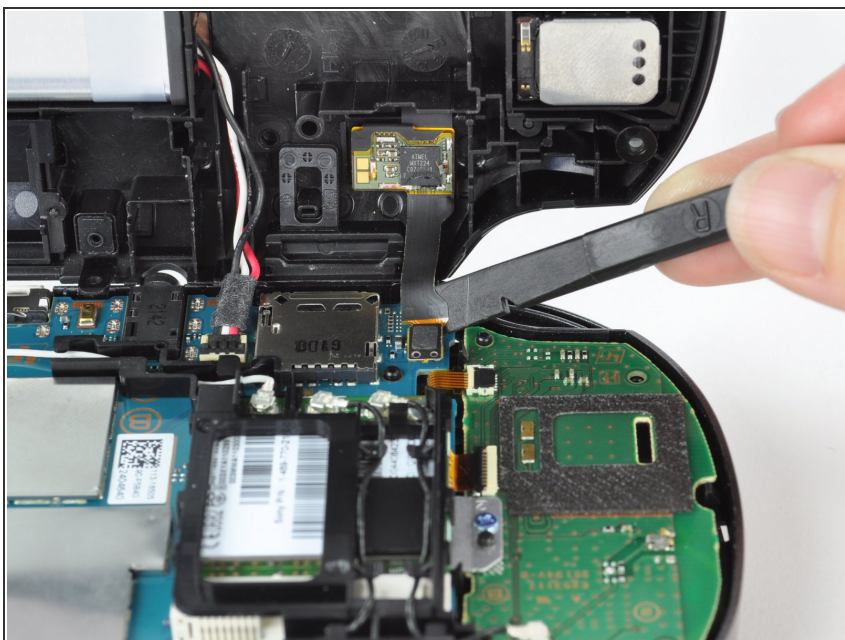
- Beginning at the sides of the device, use a plastic opening tool to separate the front and rear cases.
  - Continue working your way around the device gently prying it open.
- ⚠ There are still wires holding the front and rear cases together. You may damage the connections if you yank the cases completely apart.

## Step 5



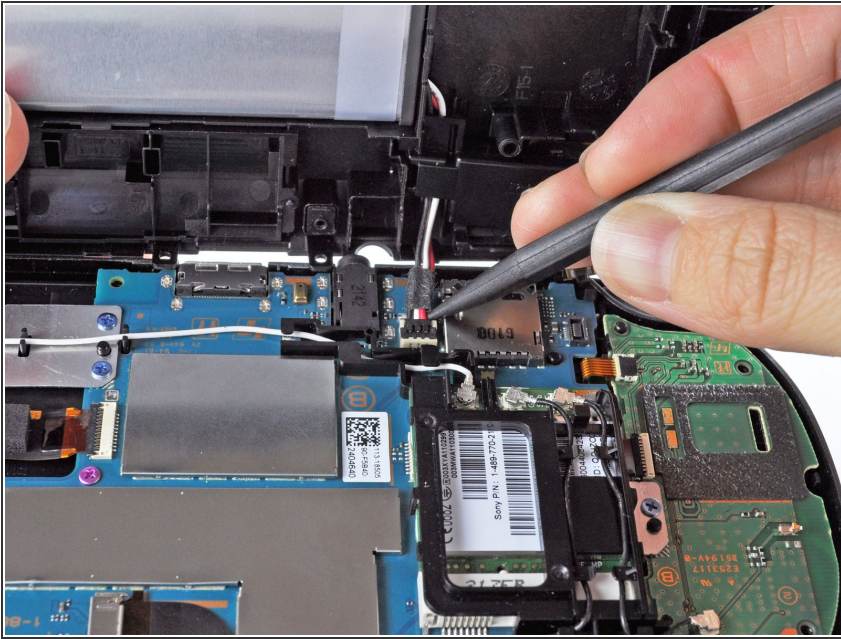
- Gently separate the two cases, minding the battery and the touch screen controller connectors holding the two cases together.

## Step 6



- Using a spudger, free the touch screen controller flex cable by gently prying up the connection.

## Step 7



- Free the battery cable by gently prying up on the connection with a spudger.

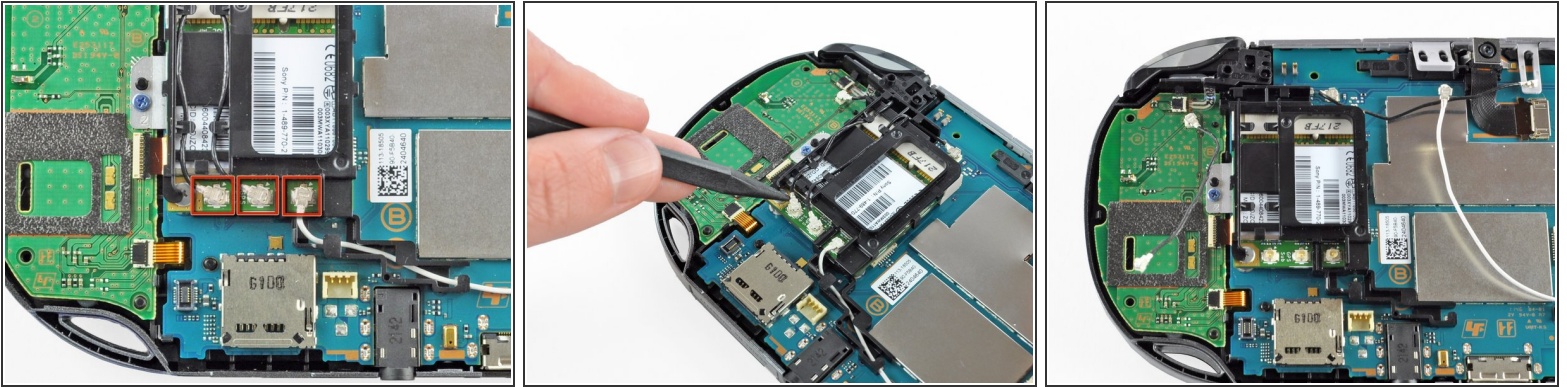
## Step 8



- Separate the front and rear cases.



## Step 9 — Wireless Card



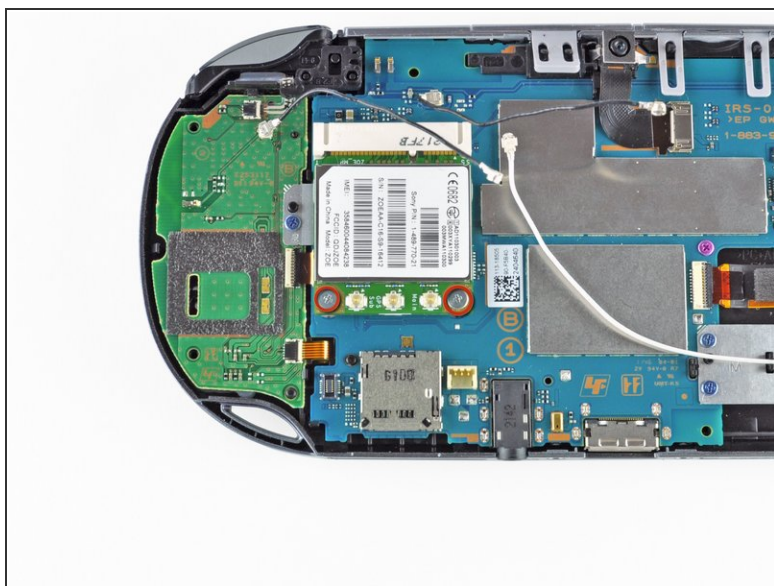
- Using the pointy end of the spudger, disconnect the three antenna cable connectors on top of the wireless card.
- Deroute the antenna cables so that they are out of the wireless card casing. Rest the wires out of the way.

## Step 10



- Hook the spudger beneath the tab on the wireless card casing and release the tab.
- Peel up and remove the wireless card casing.

## Step 11



- Remove the two 4.4mm Phillips #00 screws on the wireless card.
- ⓘ The wireless card will naturally pop out at an angle.
- Pull out the wireless card.

To reassemble your device, follow these instructions in reverse order.