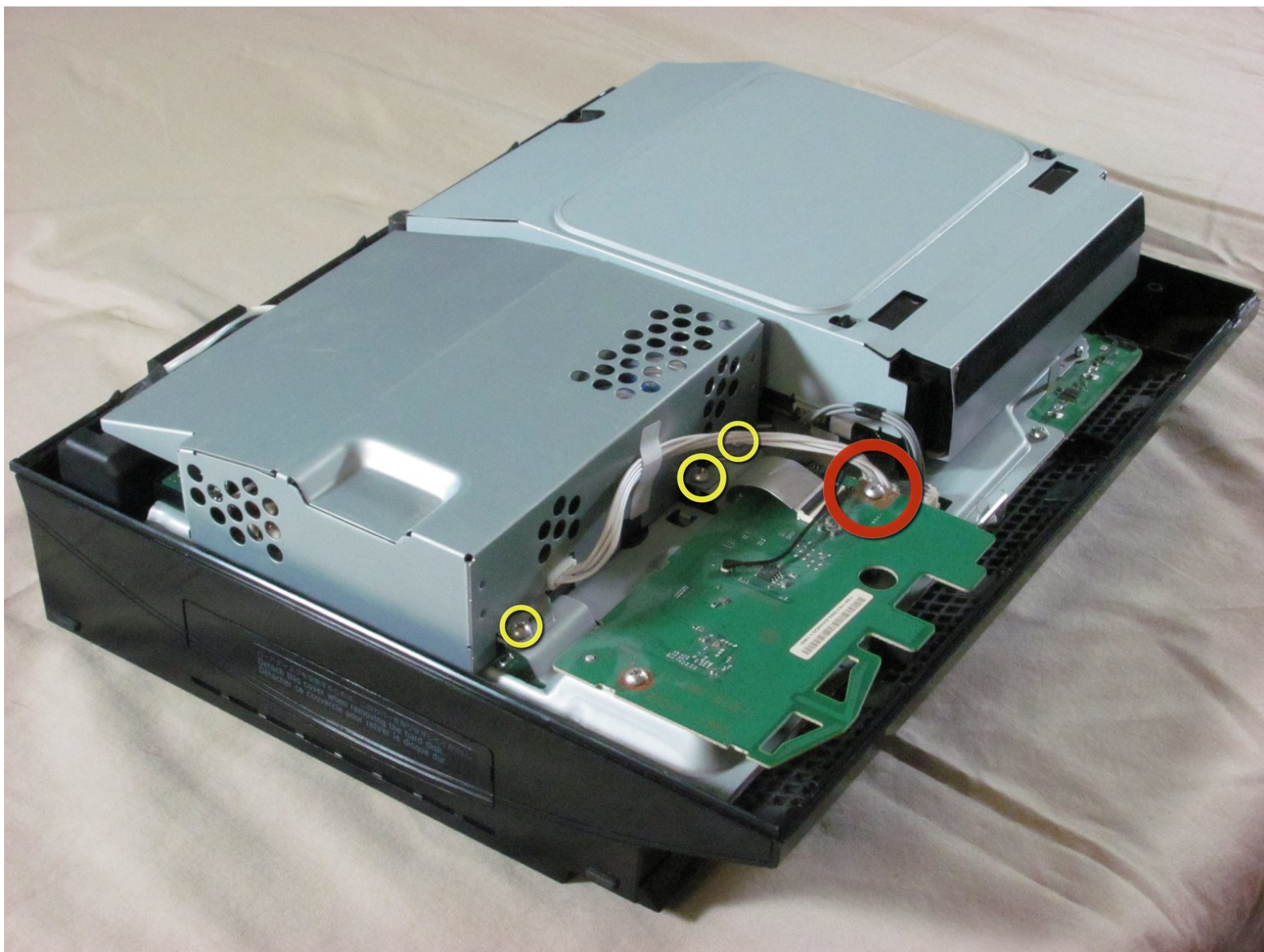




# Playstation 3 Power Supply Replacement

Written By: iDeleted



---

## INTRODUCTION

Power supplies take electricity from a wall socket and convert it so that it may be used by the various components of the PS3.

---



### TOOLS:

- [Phillips #2 Screwdriver](#) (1)
-

## Step 1 — Top Cover



- Remove the rubber screw cover near the hard drive cover with a spudger.

## Step 2



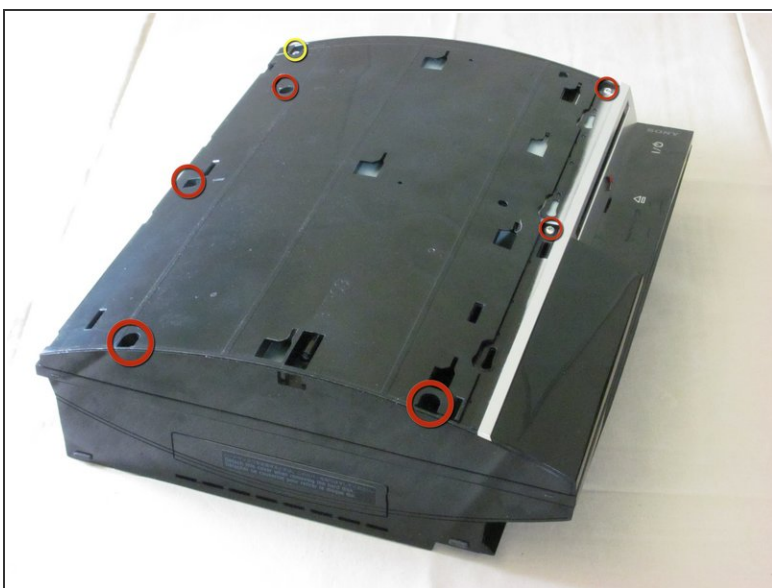
- Remove the screw holding the top cover in place with a Torx T10 screwdriver.

## Step 3



- Slide the top cover down about half an inch.
- Lift the cover off of the PS3.

## Step 4



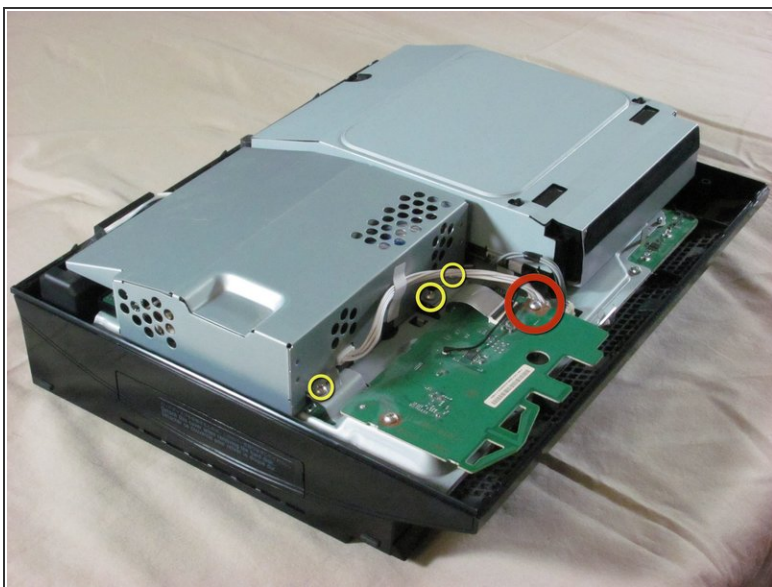
- Remove the seven screws in the top cover with a Phillips #2 screwdriver.
- ❗ One of the screws is shorter than the others. The short screw is marked in yellow.

## Step 5



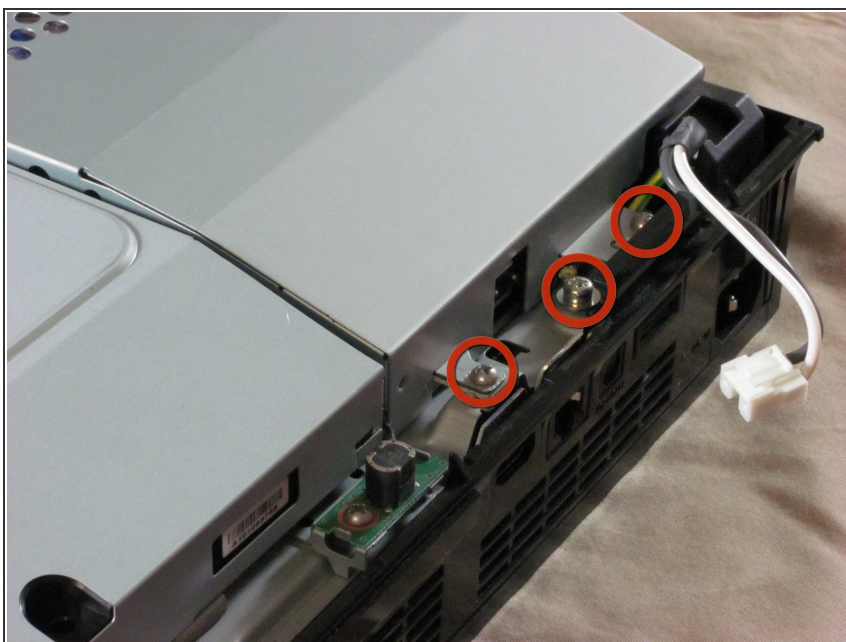
- You can now lift off the top cover.

## Step 6 — Power Supply



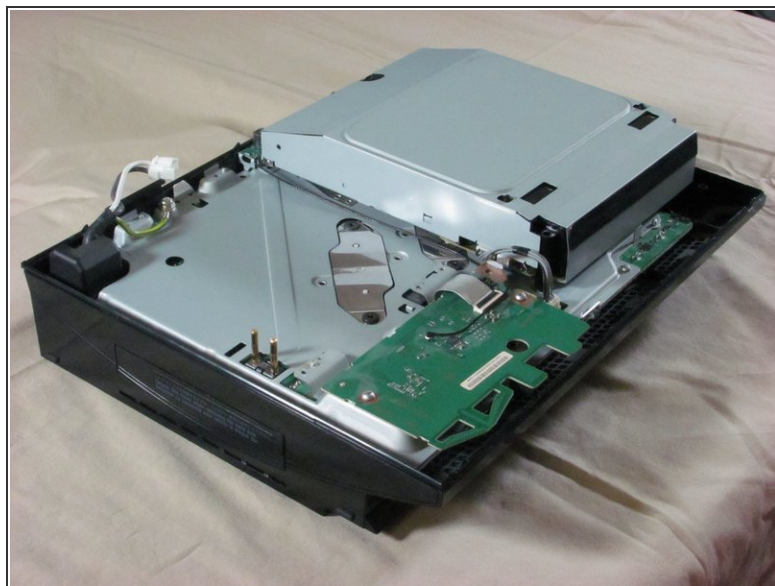
- Unplug the white wires connected to the wireless board. There are two sets of wires: one set in the front, one in the back.
  - ✦ Push down the tab on the connector to disconnect the wires.
- Remove the two screws on the front of the power supply.

## Step 7



- Remove the screws on the back of the power supply with a Phillips #2 screwdriver.

## Step 8



- Remove the power supply by lifting it straight up.

To reassemble your device, follow these instructions in reverse order.