



Playstation Classic Open Button Replacement

This guide will show you how to take apart the Open Button on the PlayStation Classic.

Written By: Maxwell Webb



INTRODUCTION

This guide will show you how to replace the “Open” button on the PlayStation Classic.



TOOLS:

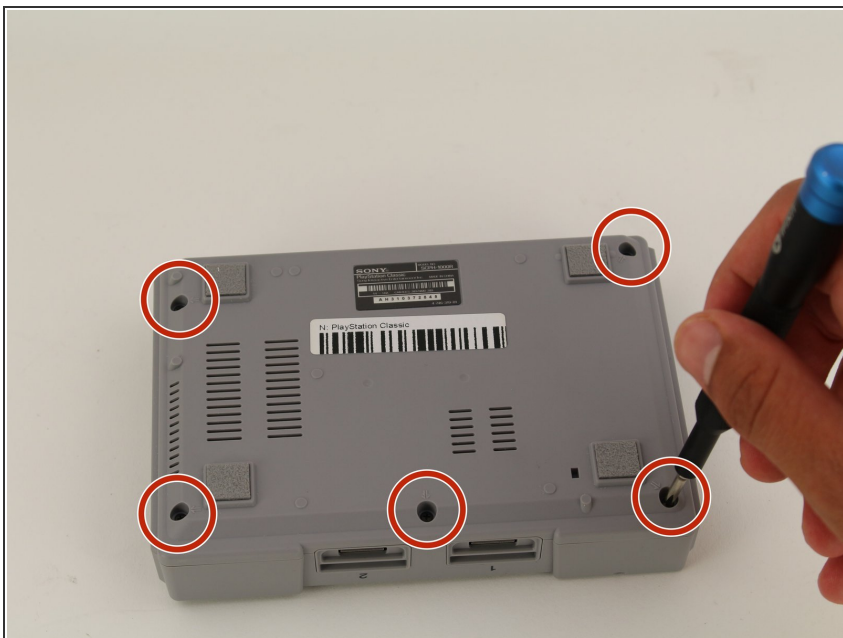
- [Phillips #00 Screwdriver](#) (1)
 - [Jimmy](#) (1)
 - [Spudger](#) (1)
-

Step 1 — Motherboard



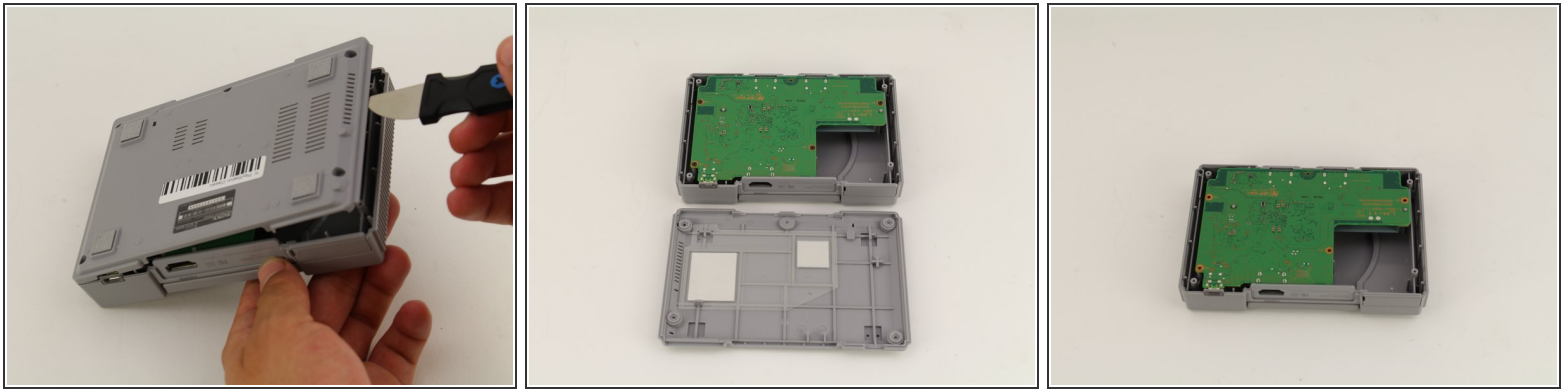
- Flip the console so its back is facing up.

Step 2



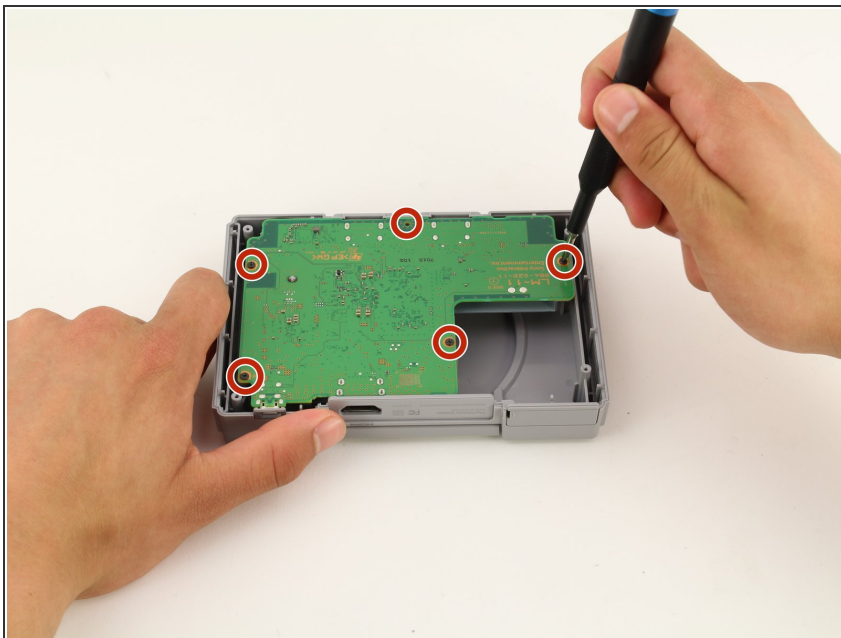
- Remove the five 3mm screws using the Phillips #00 screwdriver.
- ☑ Make sure to keep your screws together in a secure location to avoid misplacement.

Step 3



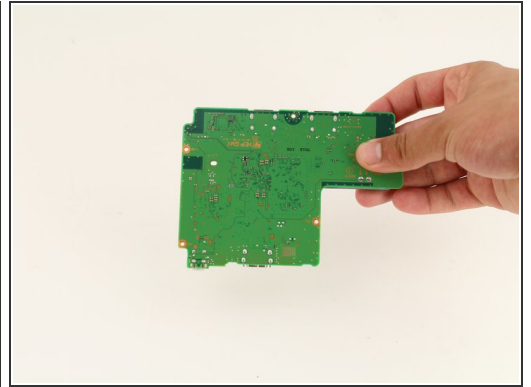
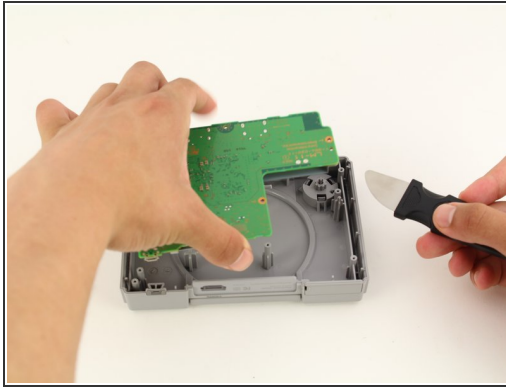
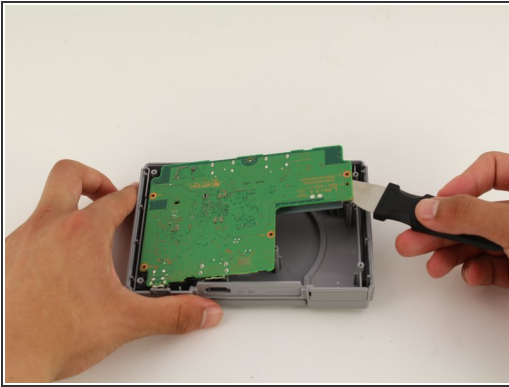
- Remove the back plate from the rest of the console using your hands or the Jimmy tool.

Step 4



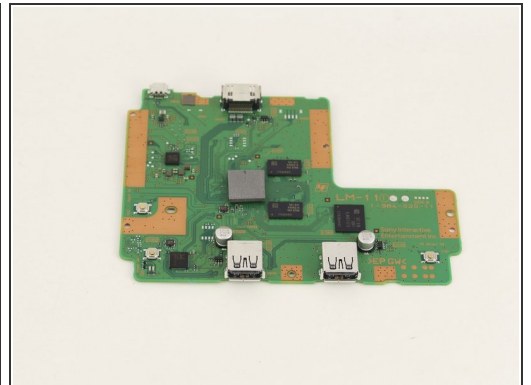
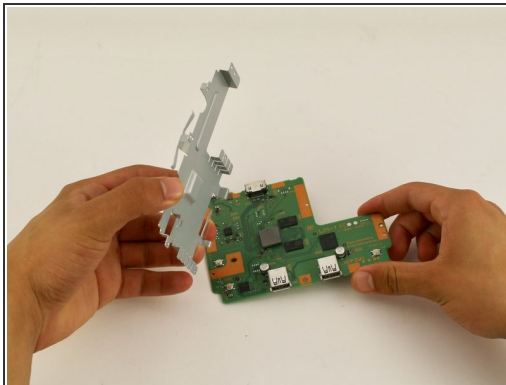
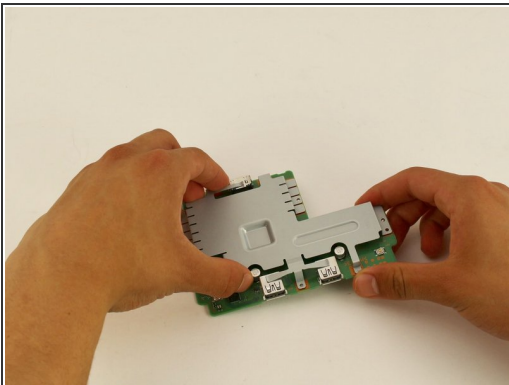
- Unscrew the motherboard's five 3mm screws with the Phillips #00 screwdriver.
- ⚠ Be careful not to apply too much force. The motherboard is flimsy and easy to break.
- ☑ Keep track of your screws once they are removed.

Step 5



- Carefully remove the motherboard from the the rest of the console using your hands or the Jimmy tool.

Step 6



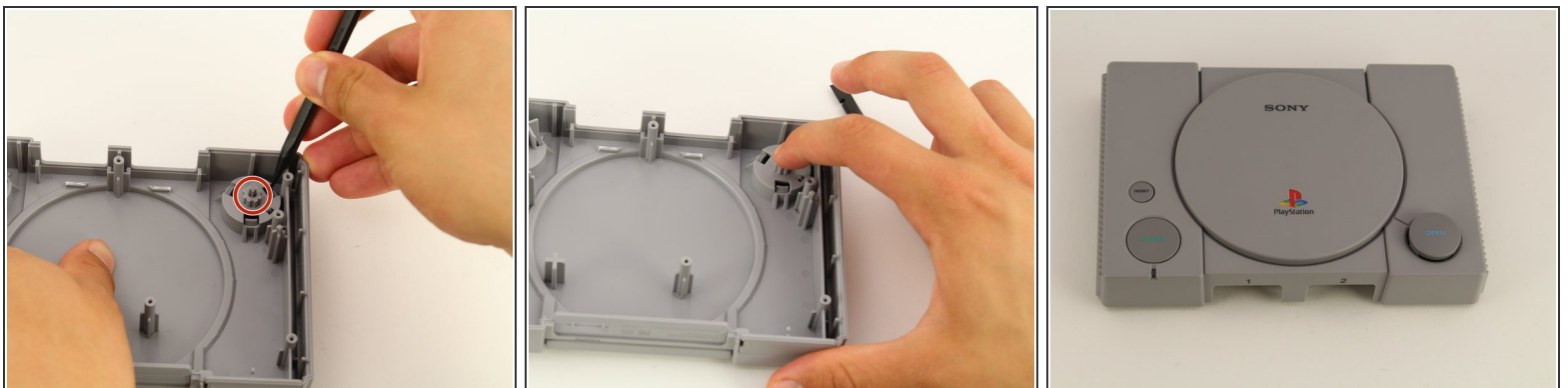
- ⓘ The motherboard is connected to its metal protective casing with sticky pads. No tools are required to remove it.
- Pull the metal casing off the motherboard.
- ⚠ Remember to be gentle when handling the motherboard.

Step 7 — Open Button



- Remove the motherboard using the previous guide and isolate the top shell of the casing.
- Use the Spudger to apply pressure inwards on the three plastic clips highlighted in the red circles.

Step 8




- After all three clips are pushed in, apply pressure on the cylindrical piece circled in red.
- Push softly on the button till a small gap is created on the other side.
- ⓘ You are not trying to fully remove the Open Button in this step.

Step 9



- Use the black spudger to softly pry out the open button from the top of the casing.
- Once enough of a gap has been created, use your fingers to grab and slowly remove the open piece.

 An unrestrained string is under the open button and can fall out easily. To avoid losing the spring, complete this step on a flat surface and be gentle while removing the open button.

To reassemble your device, follow these instructions in reverse order.