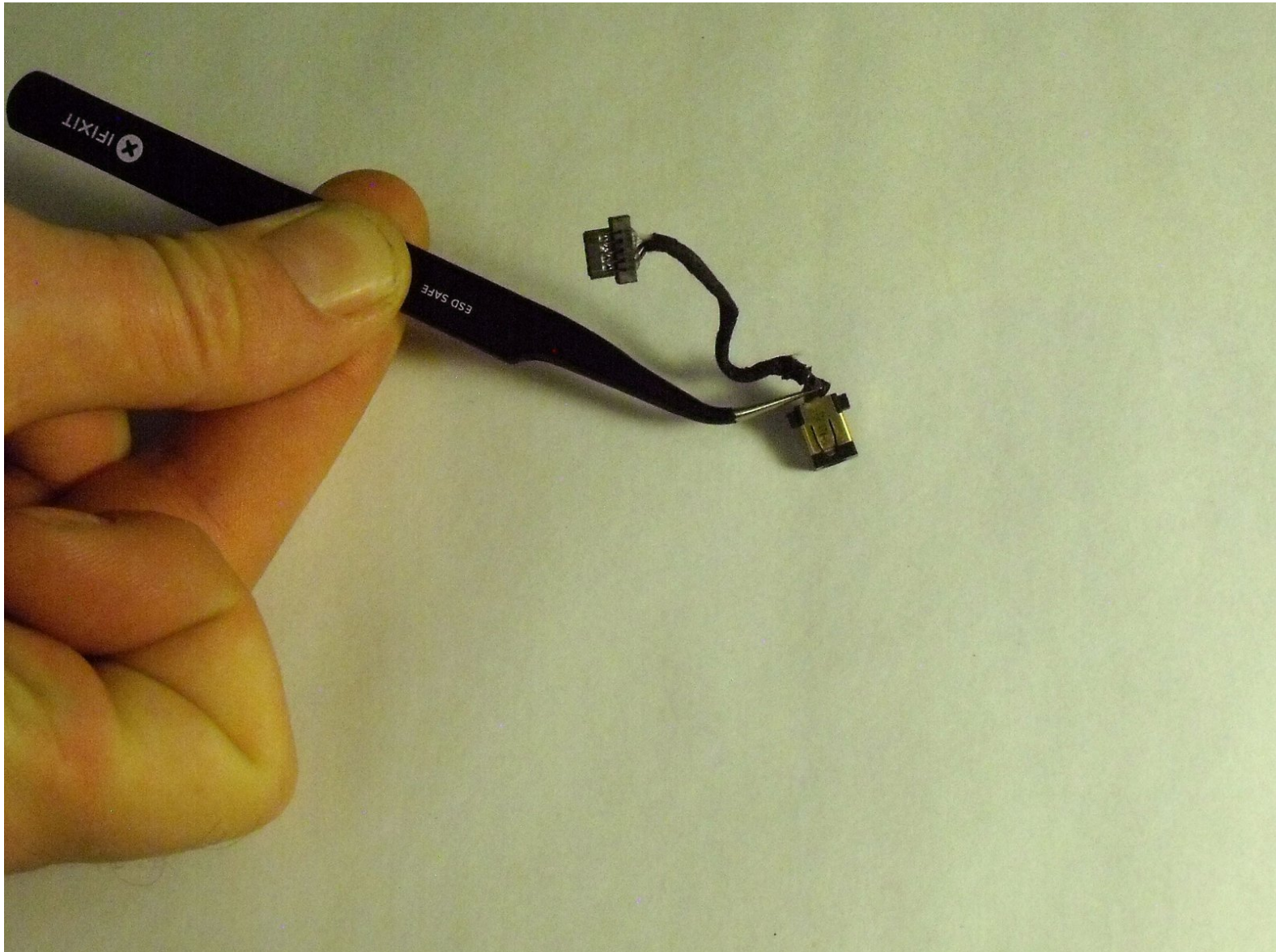




Poin2 Chromebook 11 Charging Port Replacement

This guide shows how to replace a defective charging port for a Poin2 Chromebook 11.

Written By: Jesse Johnson



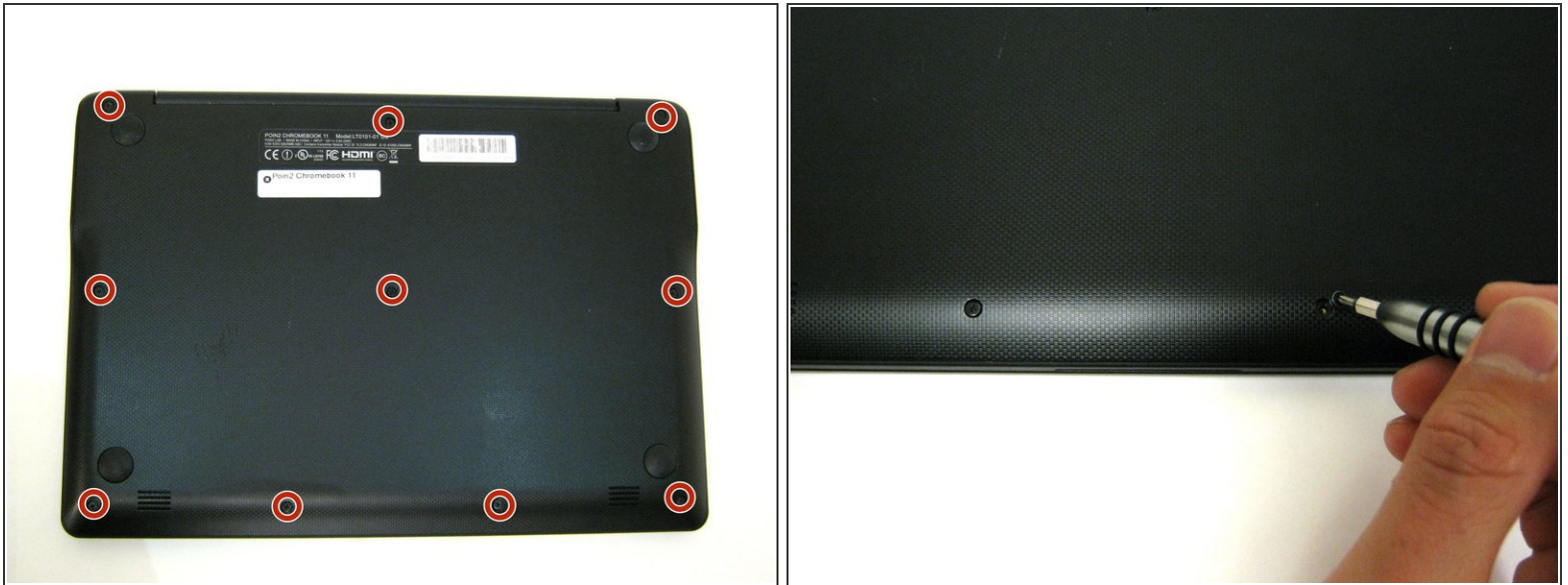
INTRODUCTION

When a Chromebook is plugged into an outlet with a working adapter, but the device will neither charge or power on, this is a sign that the charging port is damaged and needs to be replaced. This guide shows how to replace a defective charging port for a Poin2 Chromebook 11.

TOOLS:

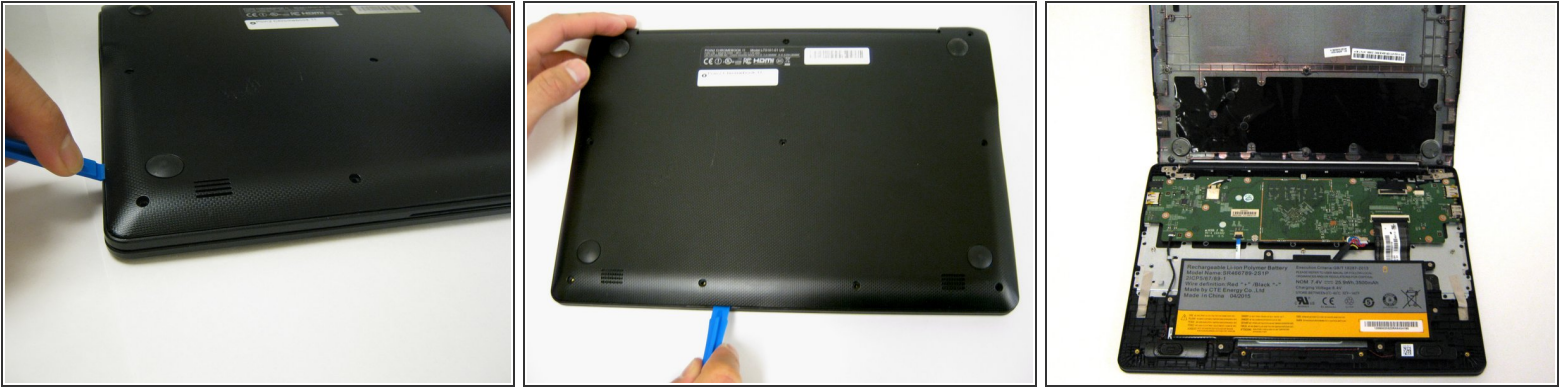
- [iFixit Opening Tools](#) (1)
 - [Phillips #0 Screwdriver](#) (1)
 - [Spudger](#) (1)
 - [Tweezers](#) (1)
-

Step 1 — Battery



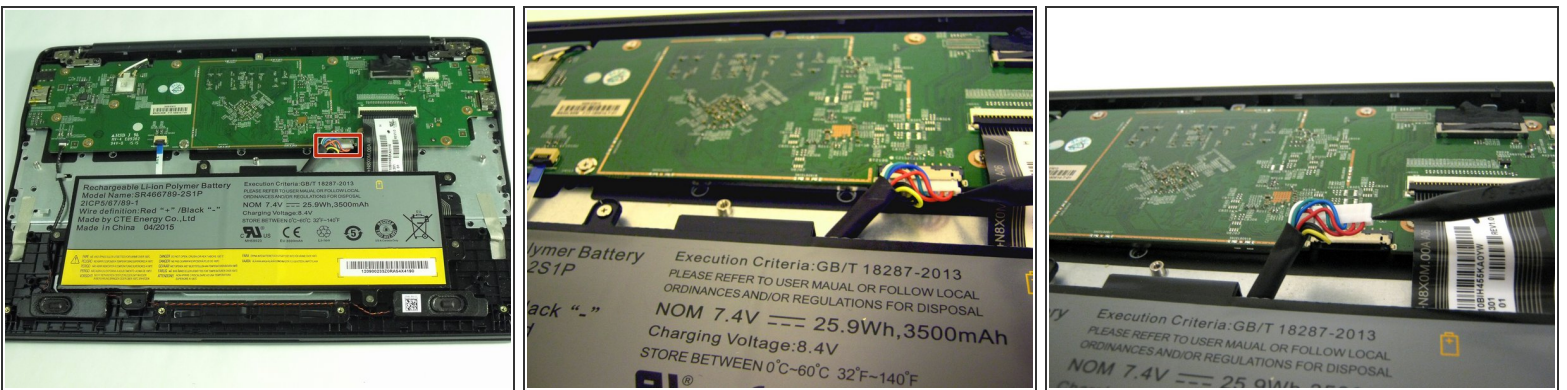
- Power down the Poin2 Chromebook 11 and disconnect the power adapter.
- Close the Chromebook and position it with the base facing up.
- Use a #0 Phillips screwdriver to unscrew the ten 7mm screws that hold the base to the rest of the frame
- ⓘ Poin2 Chromebook 11 does not have screws under its rubber feet at the base.

Step 2



- Insert a 1cm-wide plastic opening tool between the base and top frame.
- ① Applying pressure up and down with the tool may be necessary. When you hear a "click," this indicates the separation of the frame.
- Pry (up and down) around the entire border of the Chromebook to separate.
- Use your hands to gently lift the base away from the frame.

Step 3



- Disconnect the white 8-wire battery connector from the motherboard using a spudger to push the two L-shaped clips out of the port.
- ① The connector is a tight fit and requires careful pressure for release.

Step 4



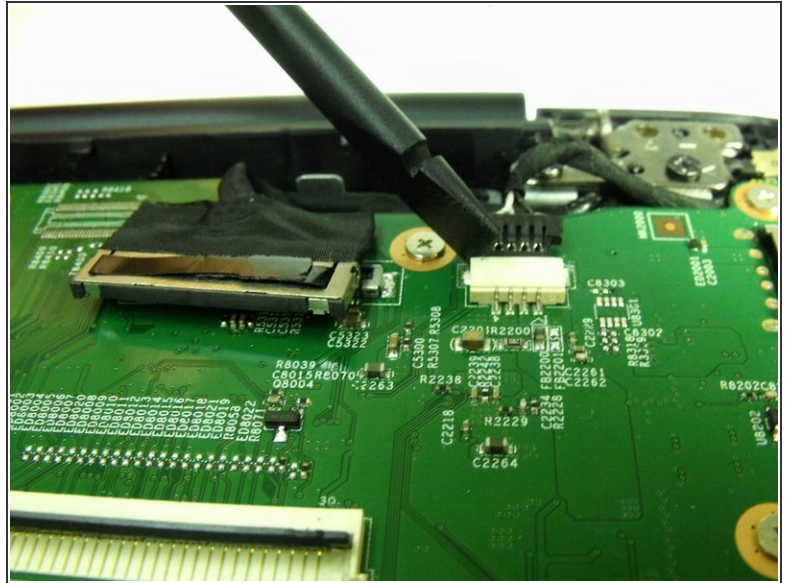
- Remove the six 4mm screws using a Phillips #0 screwdriver.

Step 5



- Lift the battery from the frame.

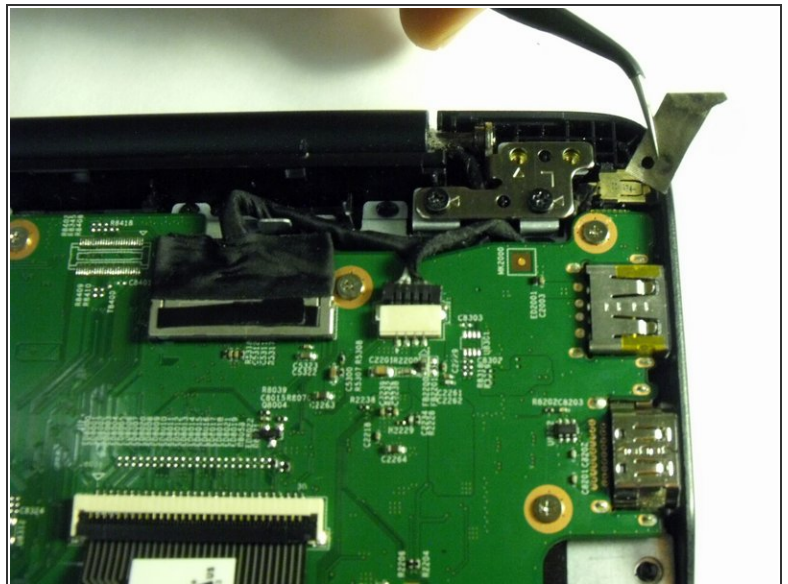
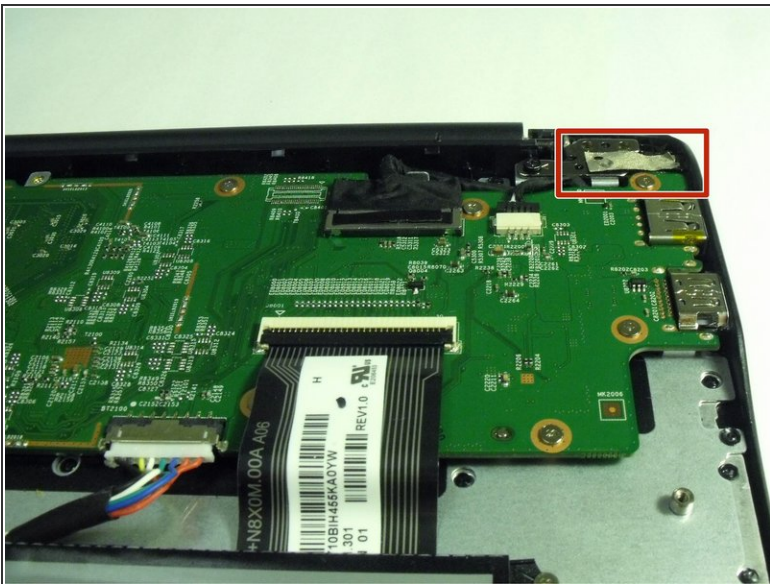
Step 6 — Charging Port



i The changing port is located on the upper-right corner of the computer.

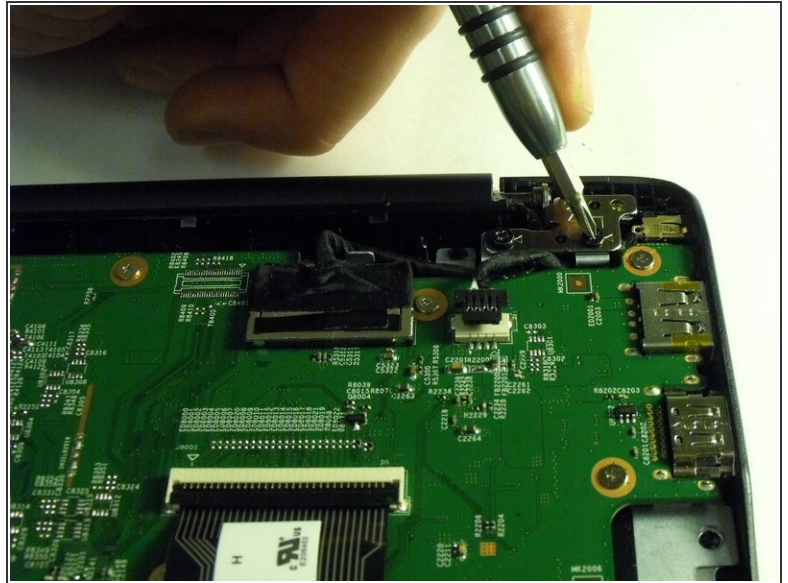
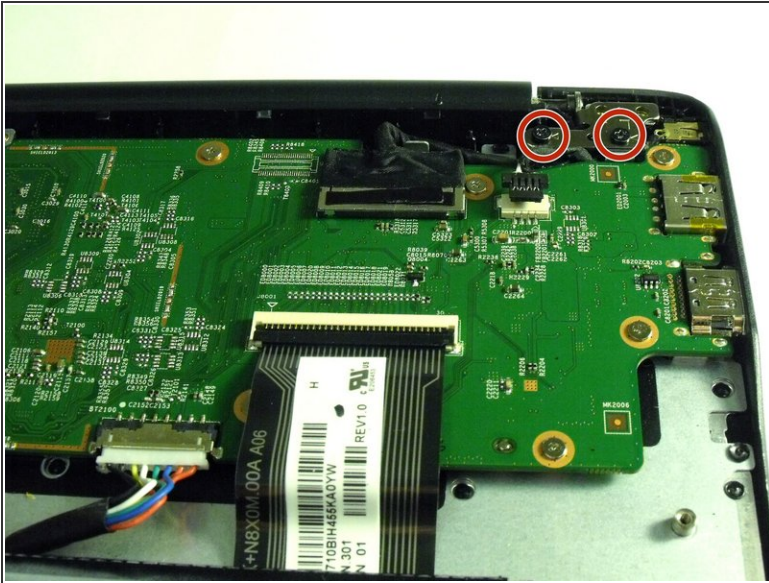
- Disconnect the charging port from the motherboard using a spudger to push the 4-wire connector out from the port.

Step 7



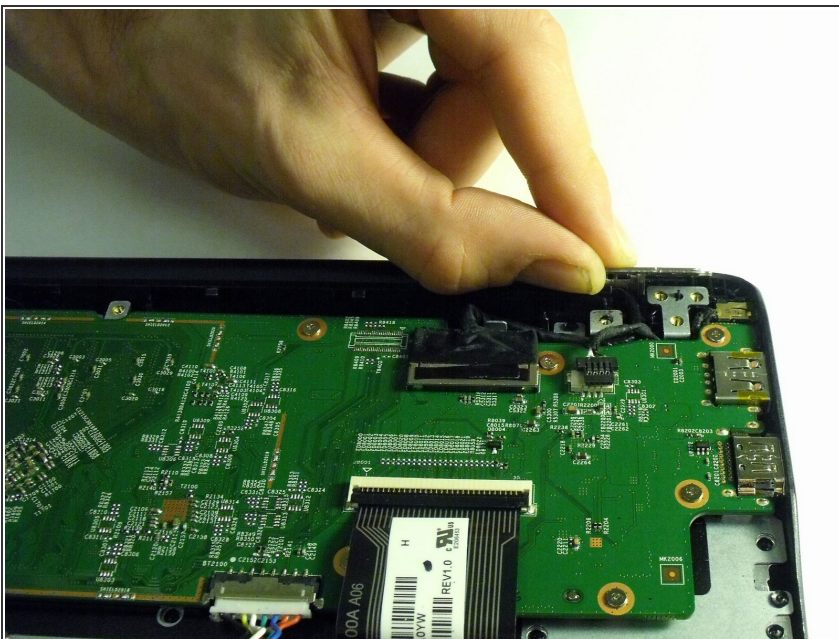
- Remove silver tape covering hinge.

Step 8



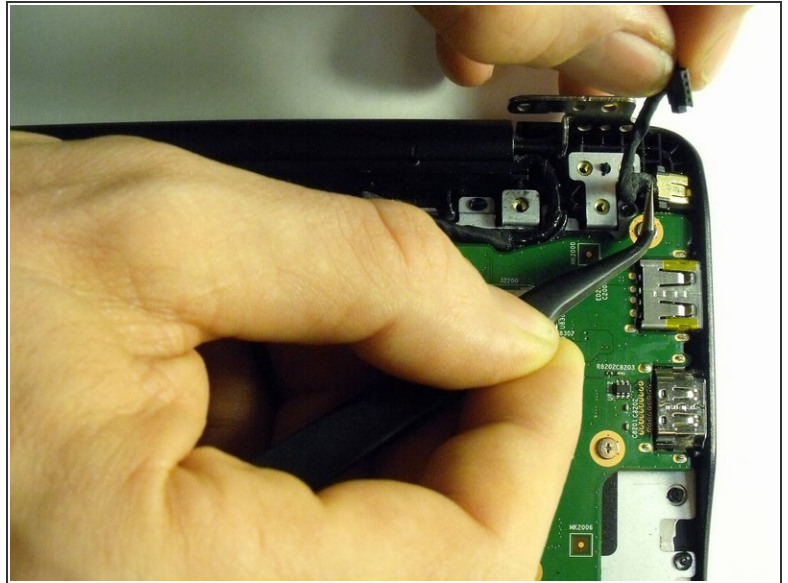
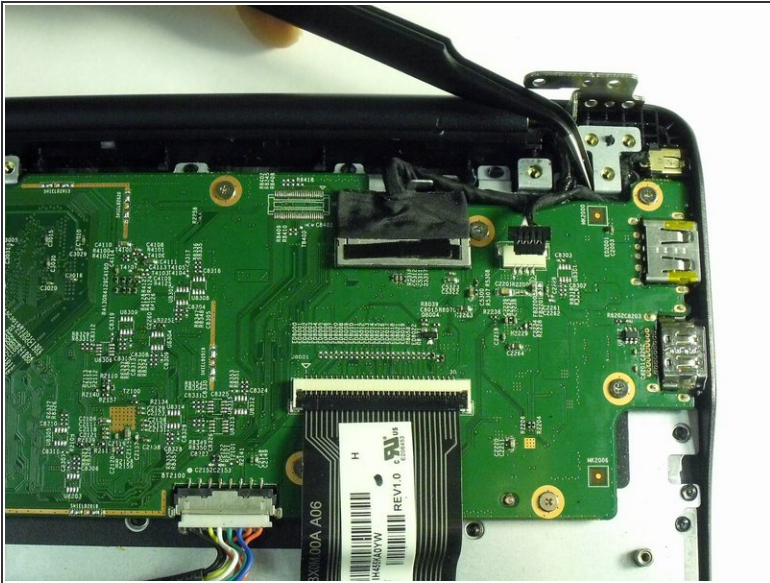
- i The metal hinge at the top right corner must be lifted to access the charging port.
- Use a Phillips #0 screwdriver and remove the two 7mm screws from the hinge.

Step 9



- Pry the metal hinge up, until it sits perpendicular to the motherboard.
- i The metal hinge is a tight fit and requires careful strength when lifting.

Step 10



- Use tweezers to gently pull the charging port out of the frame.

To reassemble your device, follow these instructions in reverse order.