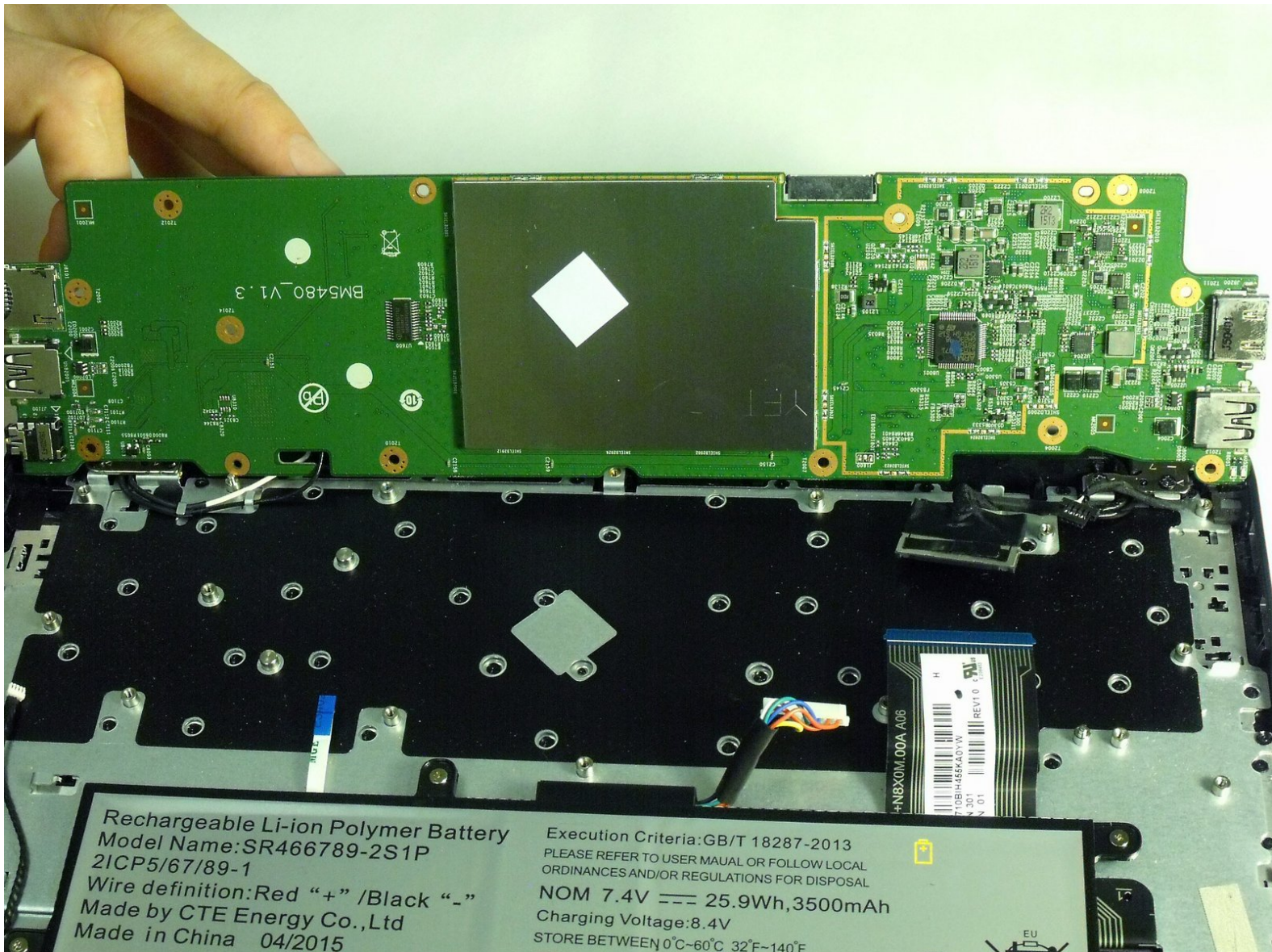




# Poin2 Chromebook 11 Motherboard Replacement

Replace a motherboard in a Poin2 Chromebook 11 or remove it to get to other areas in need of repair (e.g. charging port, wifi card, or keyboard).

Written By: Jesse Johnson



This document was generated on 2019-09-18 11:20:54 AM (MST).

## INTRODUCTION

Motherboards can be damaged when there is injury to the device or even during a power surge. When either occurs, this often results in a computer that will not power on or respond. This guide shows how to replace a defective motherboard in a Poin2 Chromebook 11.



### TOOLS:

- [Phillips #0 Screwdriver](#) (1)
  - [iFixit Opening Tools](#) (1)
  - [Spudger](#) (1)
  - [Phillips #000 Screwdriver](#) (1)
  - [Tweezers](#) (1)
-

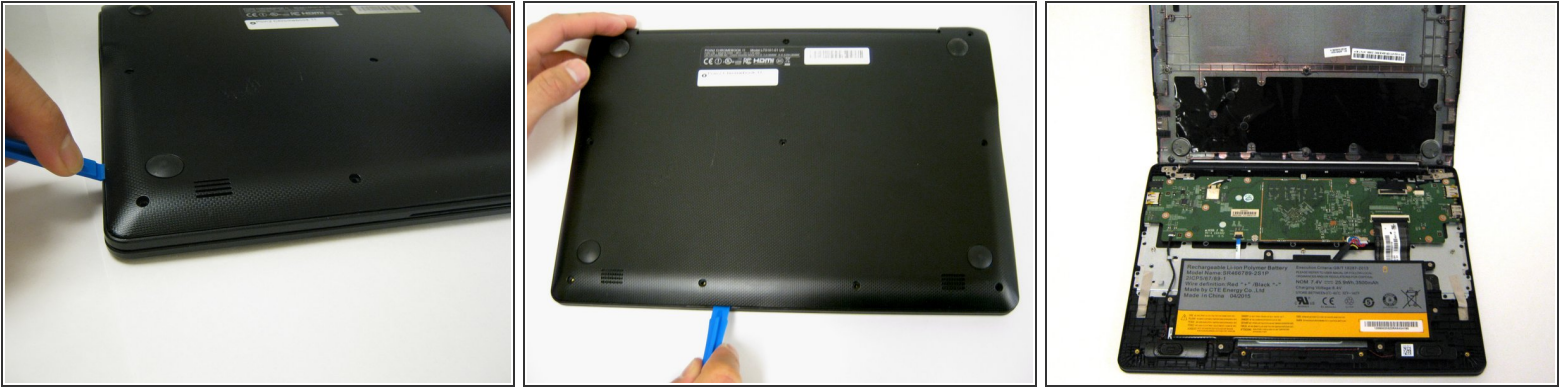
## Step 1 — Motherboard



- Power down the Poin2 Chrombook 11 and disconnect the power adapter.
  - Close the Chromebook and position it with the base facing up.
  - Use a #0 Phillips screwdriver to unscrew the ten 7mm screws that hold the base to the rest of the frame
- ⓘ Poin2 Chromebook 11 does not have screws under its rubber feet at the base.

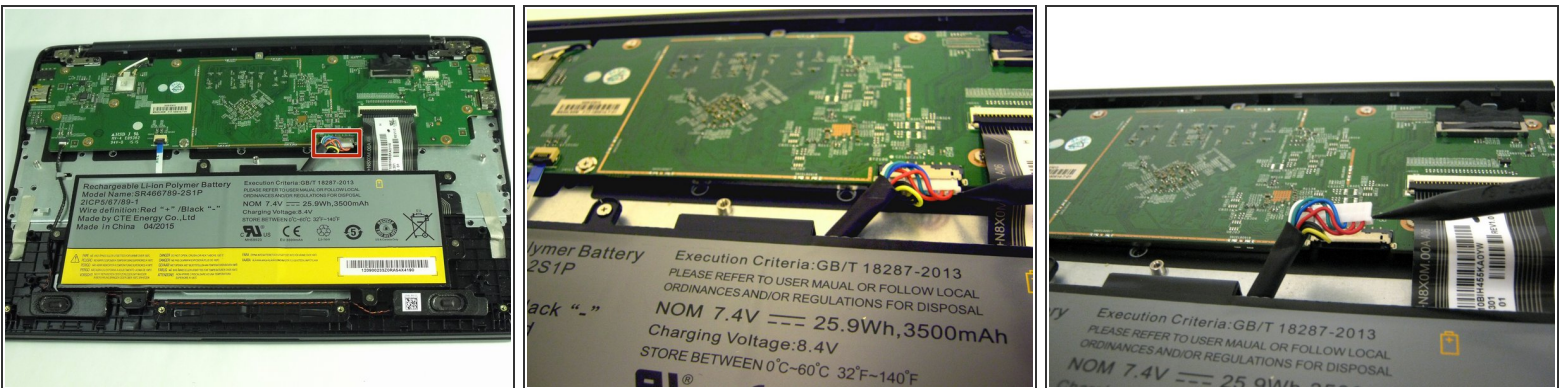


## Step 2



- Insert a 1cm-wide plastic opening tool between the base and top frame.
- ⓘ Applying pressure up and down with the tool may be necessary. When you hear a "click," this indicates the separation of the frame.
- Pry (up and down) around the entire border of the Chromebook to separate.
- Use your hands to gently lift the base away from the frame.

## Step 3



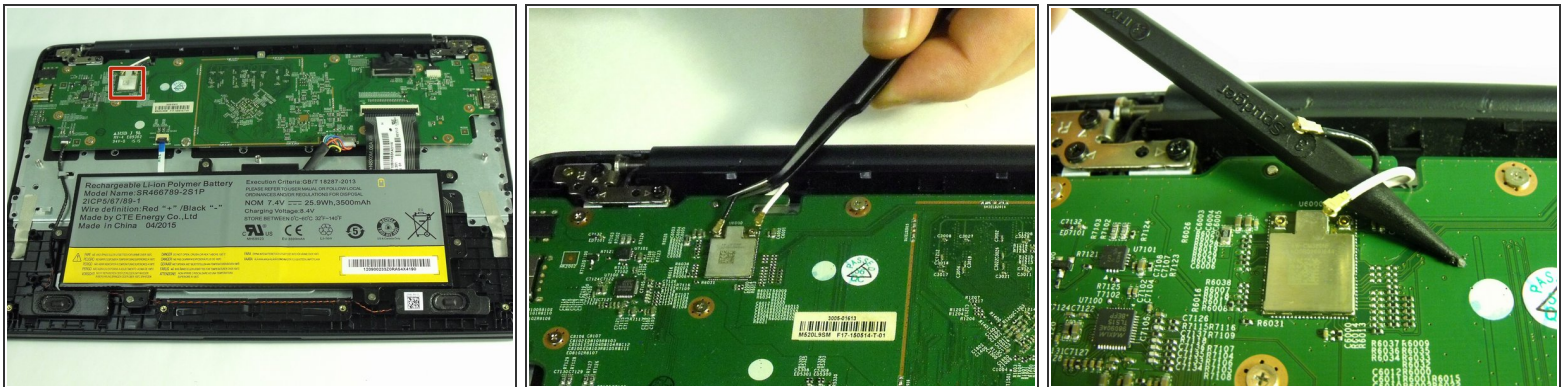
- Unplug the white 8-wire battery connector using a spudger to push the two L-shaped clips out of the socket.
- ⓘ The connector is a tight fit and requires careful pressure for release.

## Step 4



- Use a spudger (or fingertips) to flip up the plastic clamps that hold down the two ribbon cables connected to the motherboard.
- Pull the cables from their sockets.

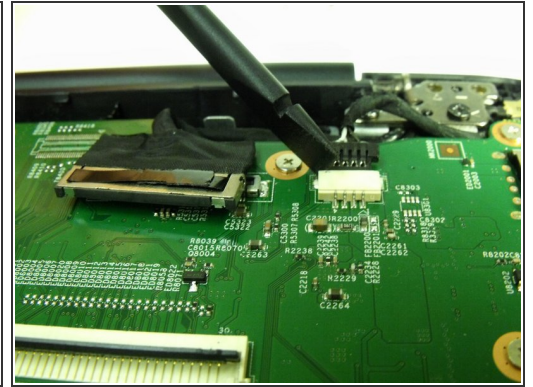
## Step 5



- Disconnect the coaxial connectors from the motherboard using tweezers (or a spudger) to "snap" off the connectors from their sockets.
- ☑ To reinstall, hold the connectors in place and gently press them straight down. The connectors will "snap" back in place.



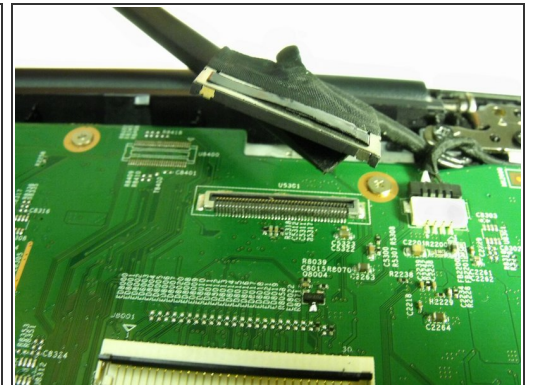
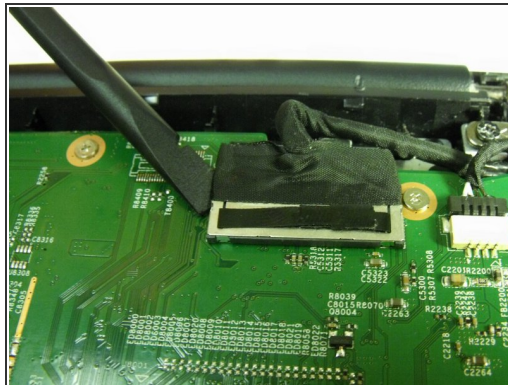
## Step 6



- Disconnect the speaker and charging port cables by pulling the connectors out of their sockets.

 The connectors may require a spudger to help with release from the sockets.

## Step 7



- Disconnect the LCD screen connector from the motherboard using a spudger.

## Step 8



- Use a #000 Phillips screwdriver and remove the twelve 4mm screws that hold the motherboard.

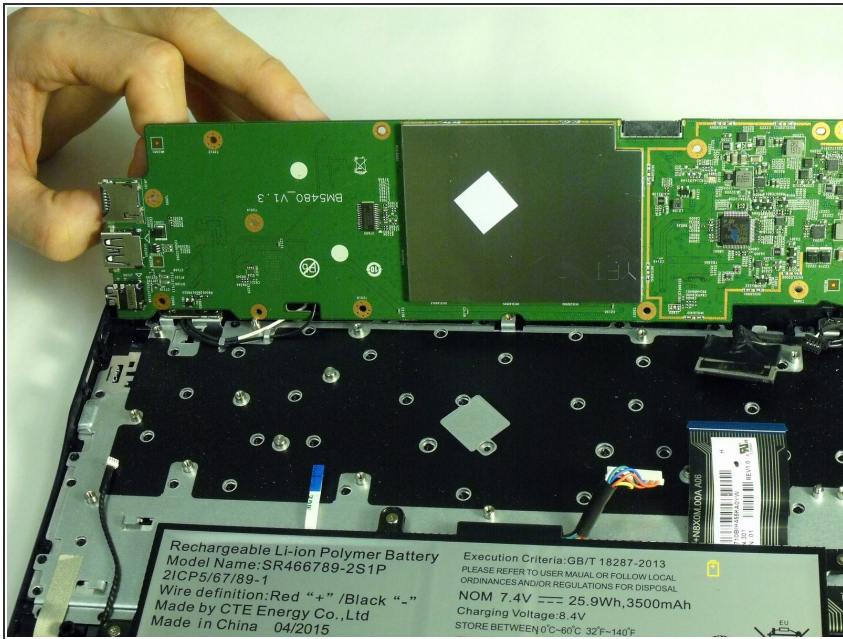
## Step 9



- Use a plastic opening tool and pry around the edges of the motherboard to release.



## Step 10



- Lift and remove the motherboard away from the frame.

To reassemble your device, follow these instructions in reverse order.