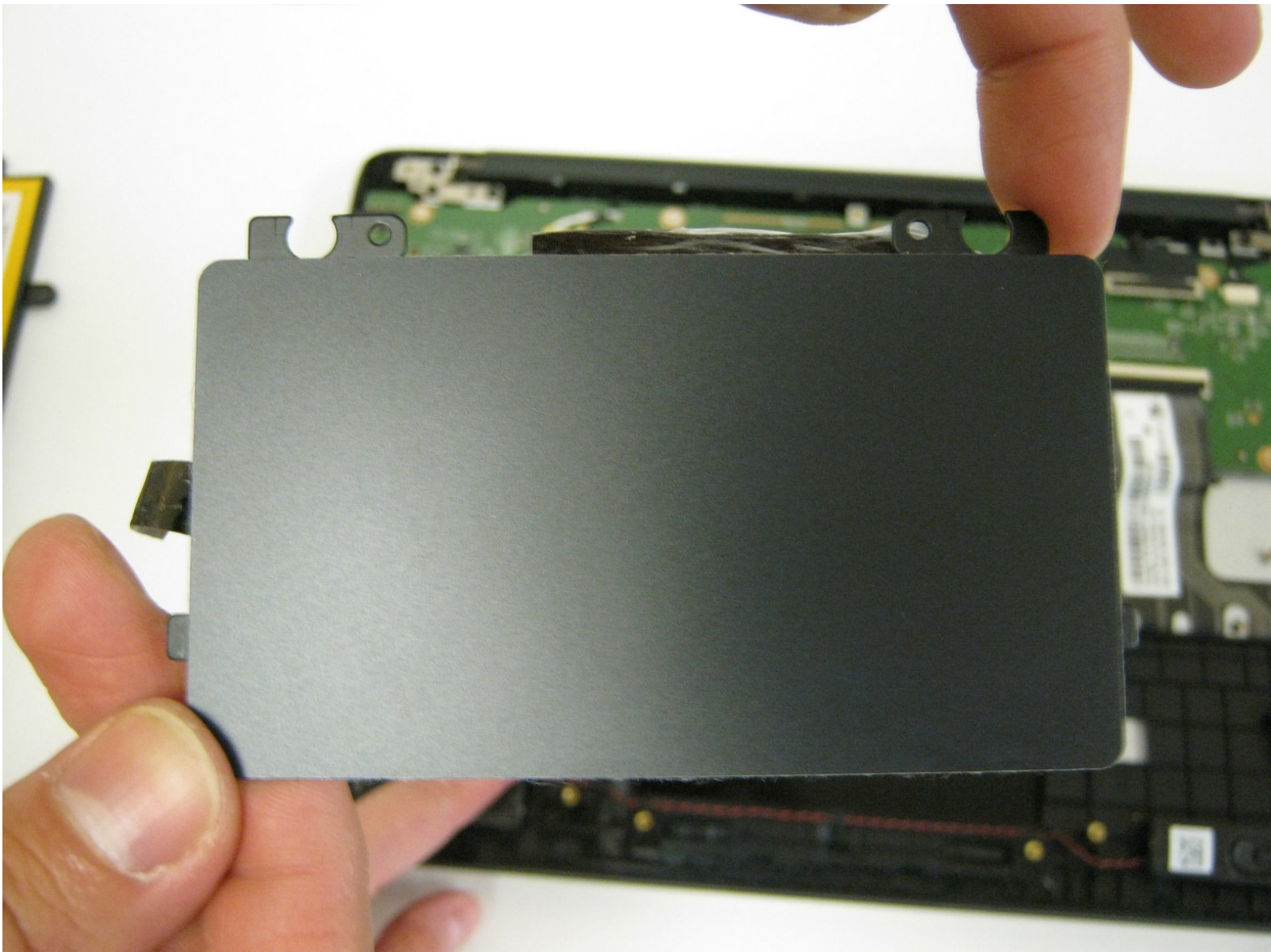




Poin2 Chromebook 11 Touchpad Replacement

Replace a defective touchpad in a Poin2 Chromebook 11.

Written By: Henry Covey



INTRODUCTION

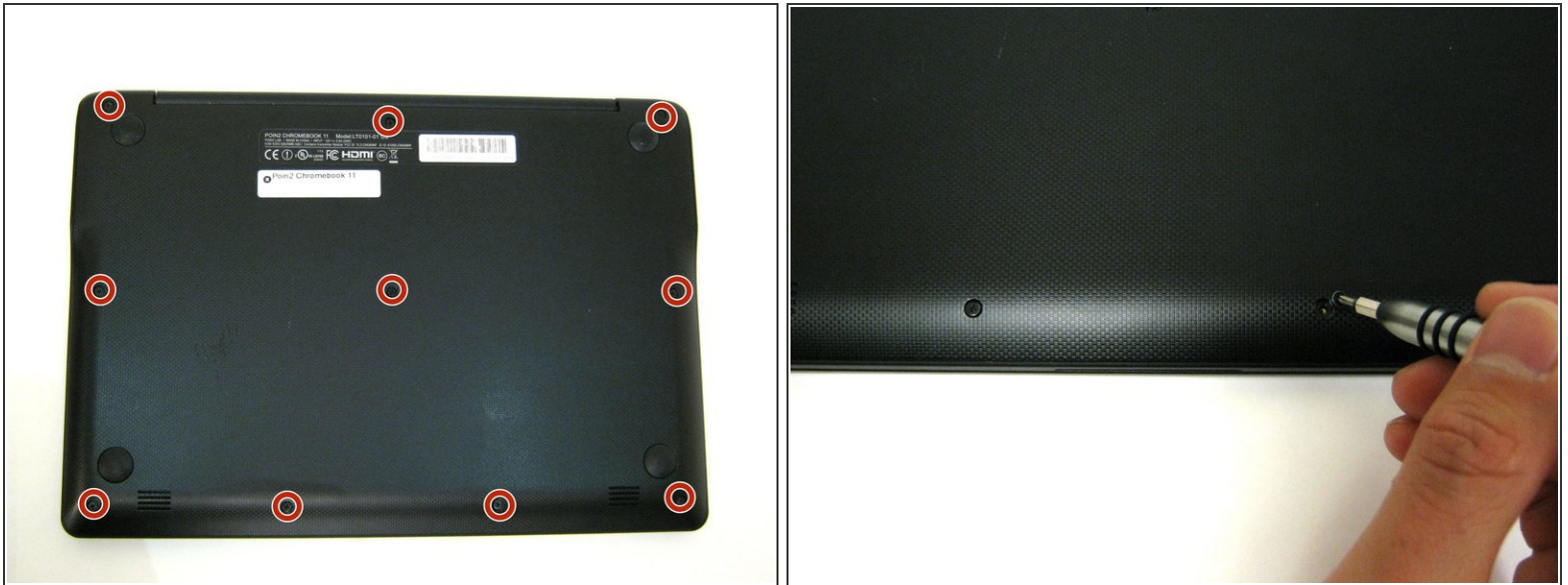
This guide shows how to replace a defective touchpad from a Poin2 Chromebook 11.



TOOLS:

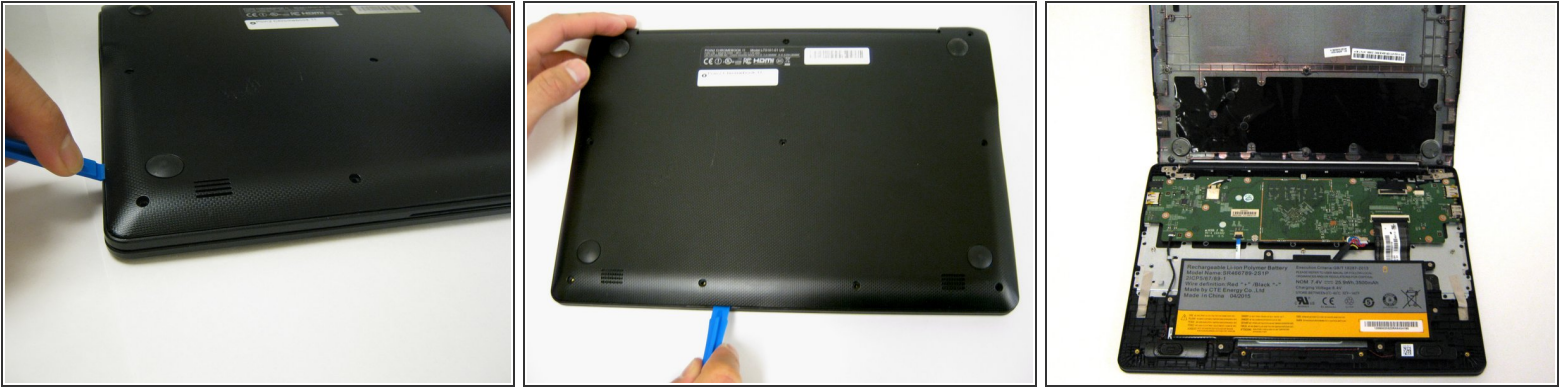
- [Phillips #0 Screwdriver](#) (1)
 - [Spudger](#) (1)
 - [iFixit Opening Tools](#) (1)
 - [Phillips #00 Screwdriver](#) (1)
 - [Metal Spudger](#) (1)
 - [Tweezers](#) (1)
-

Step 1 — Battery



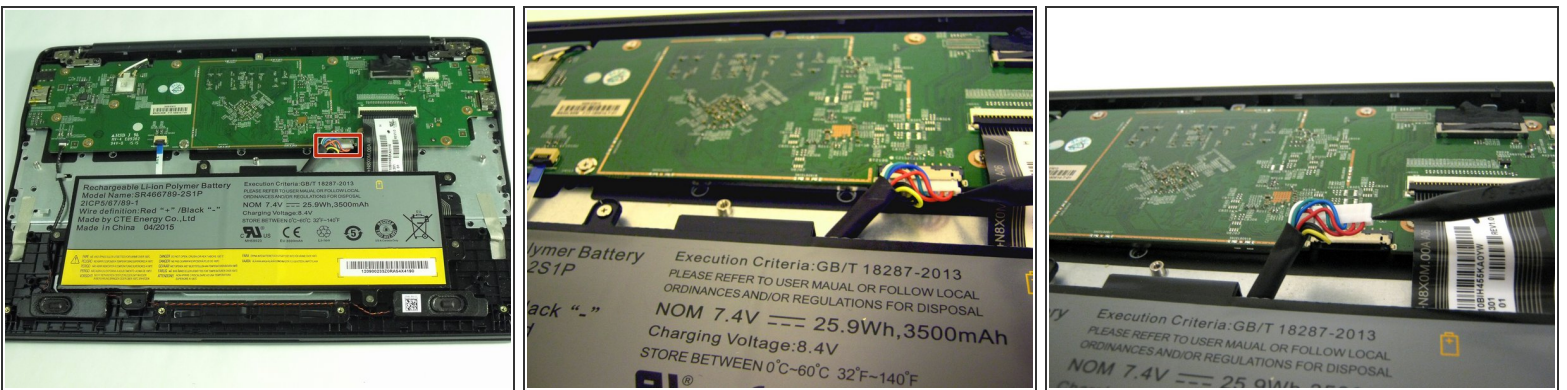
- Power down the Poin2 Chromebook 11 and disconnect the power adapter.
- Close the Chromebook and position it with the base facing up.
- Use a #0 Phillips screwdriver to unscrew the ten 7mm screws that hold the base to the rest of the frame
- ⓘ Poin2 Chromebook 11 does not have screws under its rubber feet at the base.

Step 2



- Insert a 1cm-wide plastic opening tool between the base and top frame.
- ① Applying pressure up and down with the tool may be necessary. When you hear a "click," this indicates the separation of the frame.
- Pry (up and down) around the entire border of the Chromebook to separate.
- Use your hands to gently lift the base away from the frame.

Step 3



- Disconnect the white 8-wire battery connector from the motherboard using a spudger to push the two L-shaped clips out of the port.
- ① The connector is a tight fit and requires careful pressure for release.

Step 4



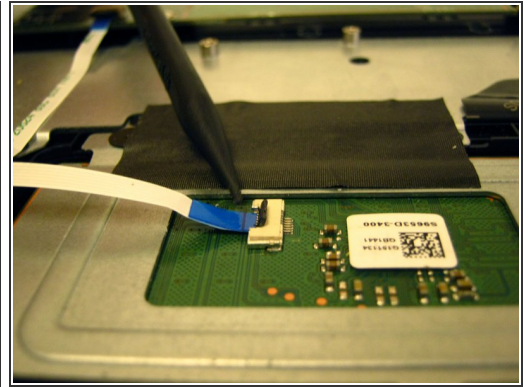
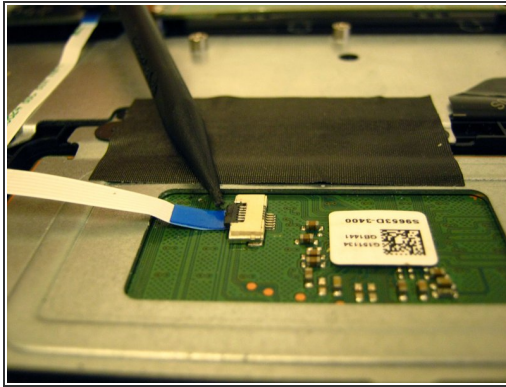
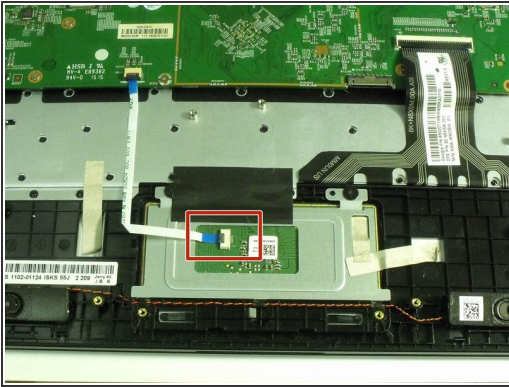
- Remove the six 4mm screws using a Phillips #0 screwdriver.

Step 5



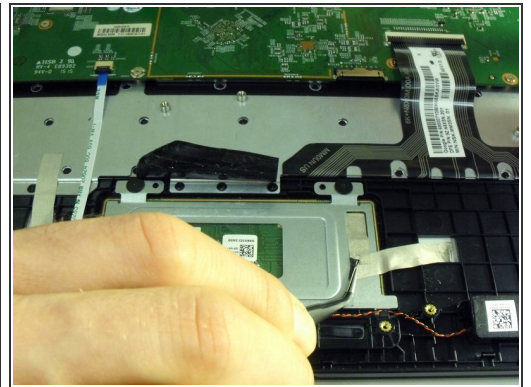
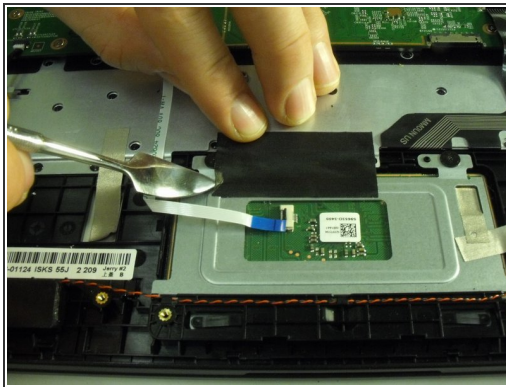
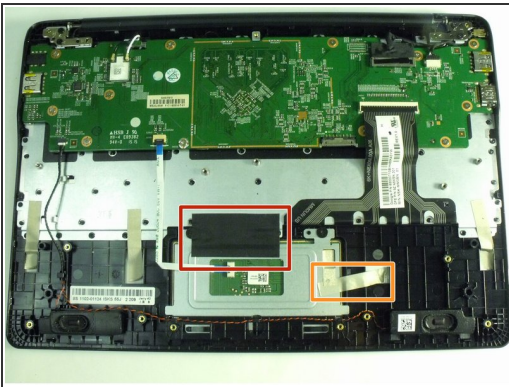
- Lift the battery from the frame.

Step 6 — Touchpad



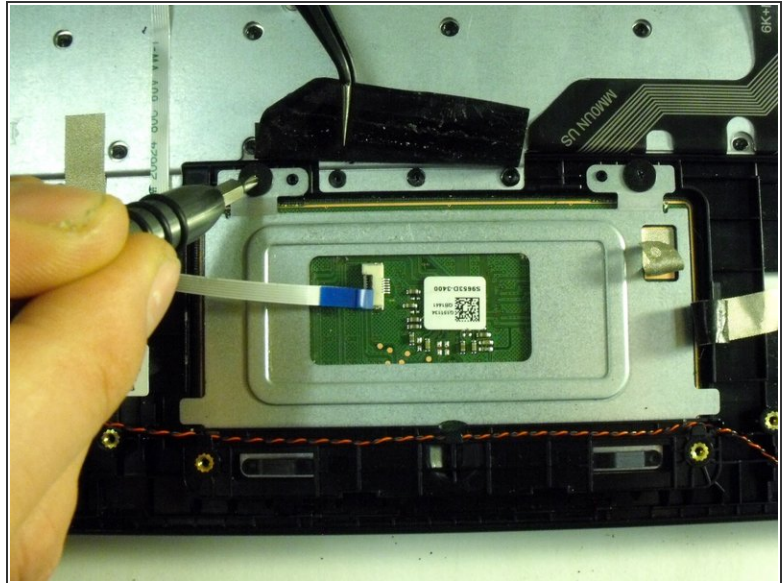
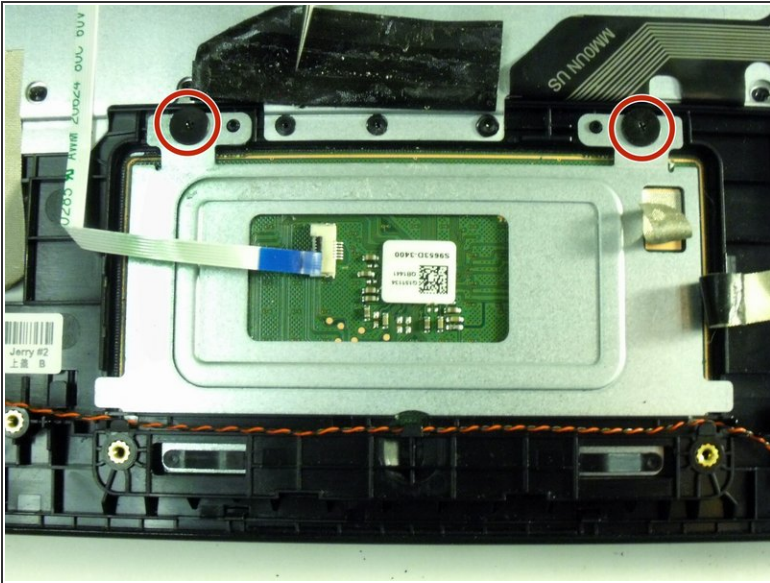
- Locate the ZIF connector on the touchpad's circuit board.
- Use the tip of the spudger to flip the locking flap to the perpendicular position and pull the cable out.
- ⓘ See also the Connectors Guide for detailed instructions, as well as iFixit's cable connectors guide.

Step 7



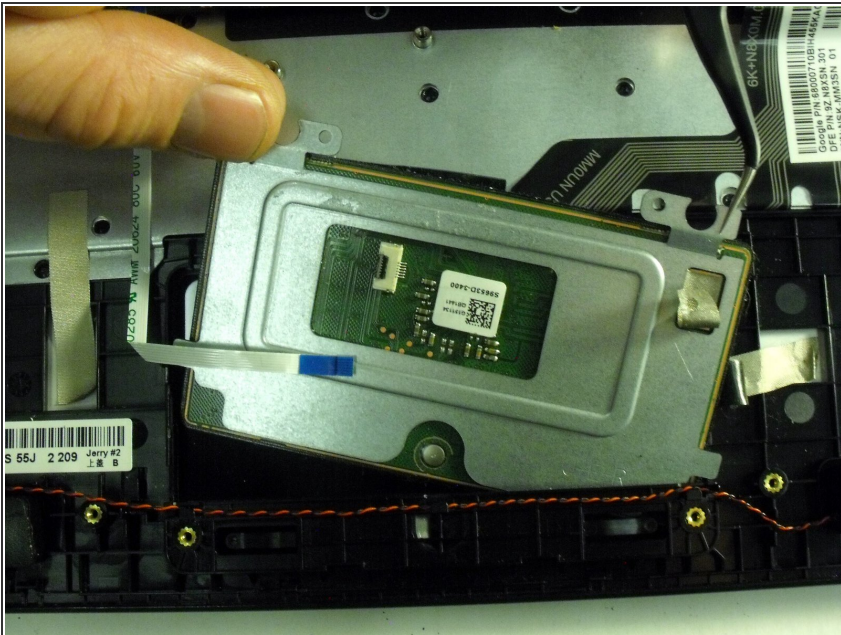
- Remove the black tape holding down the touchpad.
- Remove the strips of gold electrostatic tape also holding down the touchpad.
- ⚠ Use a metal spudger or tweezers to help pry up the corners of the tape, but be careful not to use too much force or risk damaging the heat sink.
- ⓘ Applying new tape is suggested, but the tape can be re-used.

Step 8



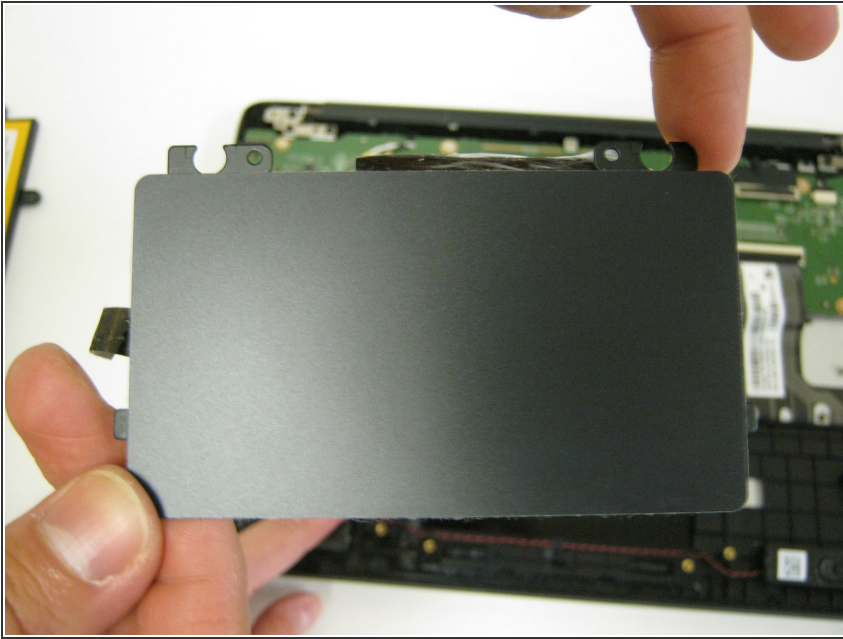
- Use a Phillips #00 screwdriver to remove the two 2 mm screws securing the metal plate that holds the touchpad in place

Step 9



- Slide the touchpad plate in the direction of the screw holes to free the plates bottom edge from under the plastic frame.

Step 10



- Remove touchpad from the opposite side of the metal plate.

To reassemble your device, follow these instructions in reverse order.