



# Pokewalker Battery Replacement

This is a short guide for replacing a pokewalker battery

Written By: Winni Stuart



# INTRODUCTION

This is a short guide for replacing a pokewalker battery



## TOOLS:

- [Phillips #0 Screwdriver](#) (1)
- [Spudger](#) (1)



## PARTS:

- [CR2032 Lithium Battery](#) (1)

## Step 1 — Battery



- Locate the Screw on the Back of the Pokewalker.

## Step 2



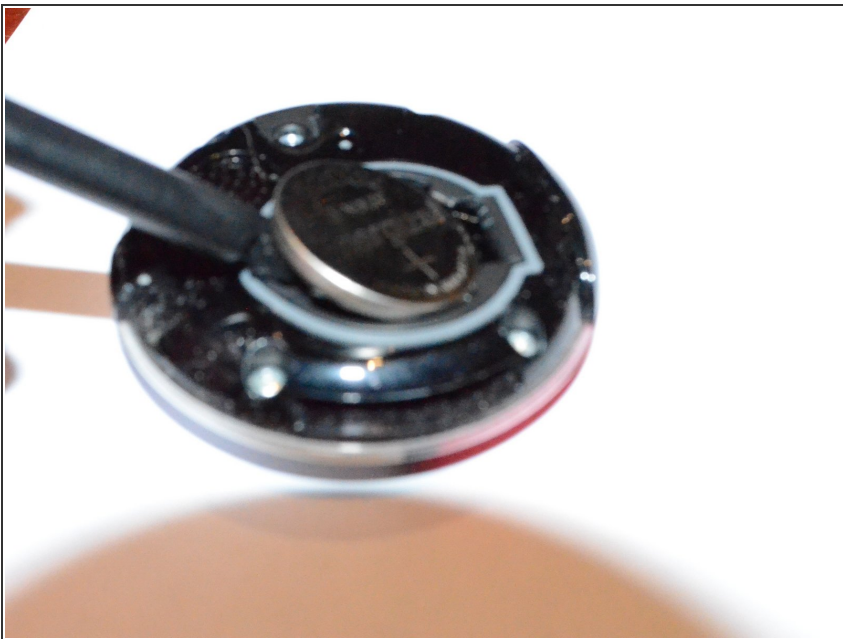
- Remove the Screw with a Phillips #0 Screwdriver
- ⓘ The screw is attached to the rear case with washers. don't worry about losing it.

### Step 3



- Remove the Rear Cover from the Device

### Step 4



- Use the flat end of a Spudger to Remove the Battery

To reassemble your device, follow these instructions in reverse order.