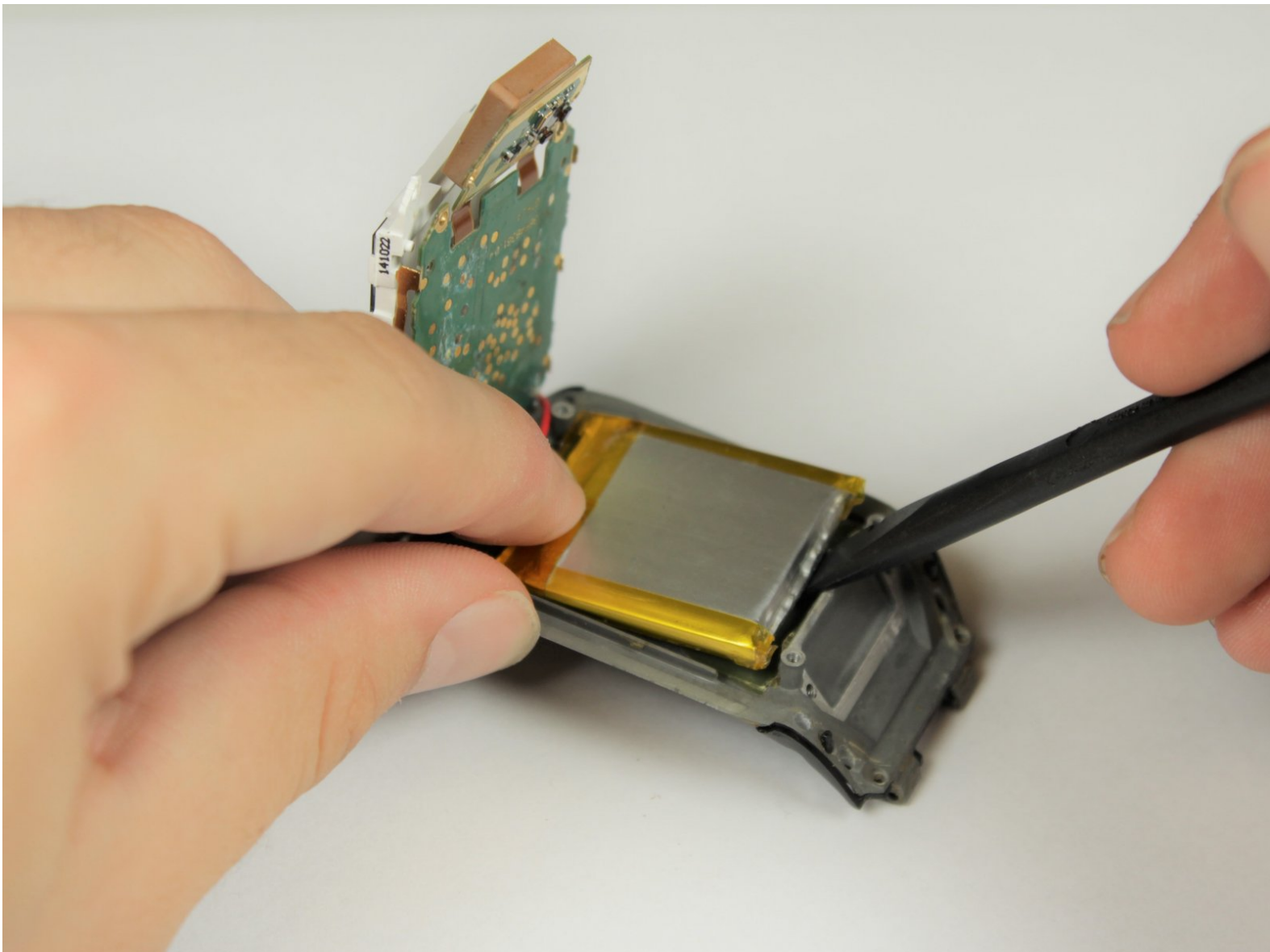




# Polar V800 Battery Replacement

This guide demonstrates how to replace the battery on the Polar V800 sports watch.

Written By: Jarod Lyles



---

## INTRODUCTION

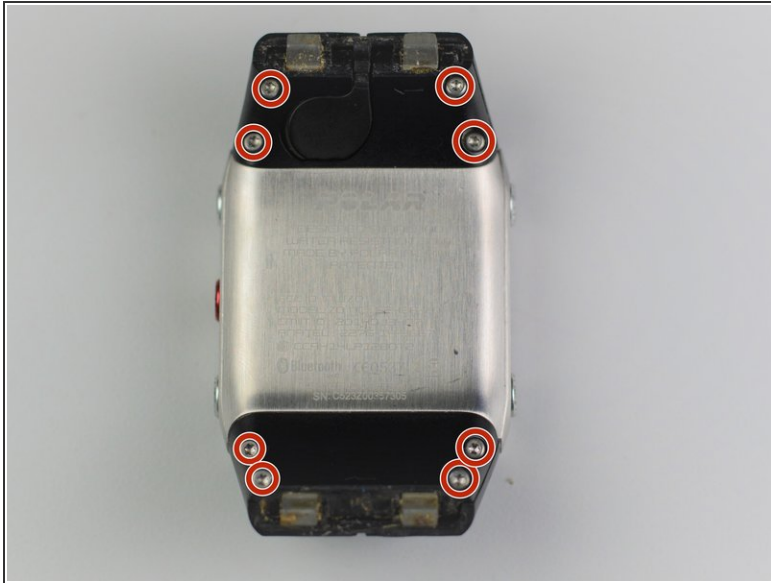
This guide will show users how to replace the battery in the Polar V800. If the battery appears at the end of its life cycle or has become swollen, then the battery may need to be replaced to keep your Polar V800 sport watch operating as it should.


---

### TOOLS:

- [T5 Torx Screwdriver](#) (1)
  - [Spudger](#) (1)
  - [Soldering Iron](#) (1)
-

## Step 1 — Waterproofing Seal



 In this guide, the wrist band of the Polar V800 is removed for a clear view of the back panel. If you find it helpful, you may want to remove the wrist strap. Please reference the [Watch Band Replacement](#) guide for removal instructions if you wish to do so.

 Ensure your Polar V800 sports watch is powered off before continuing.

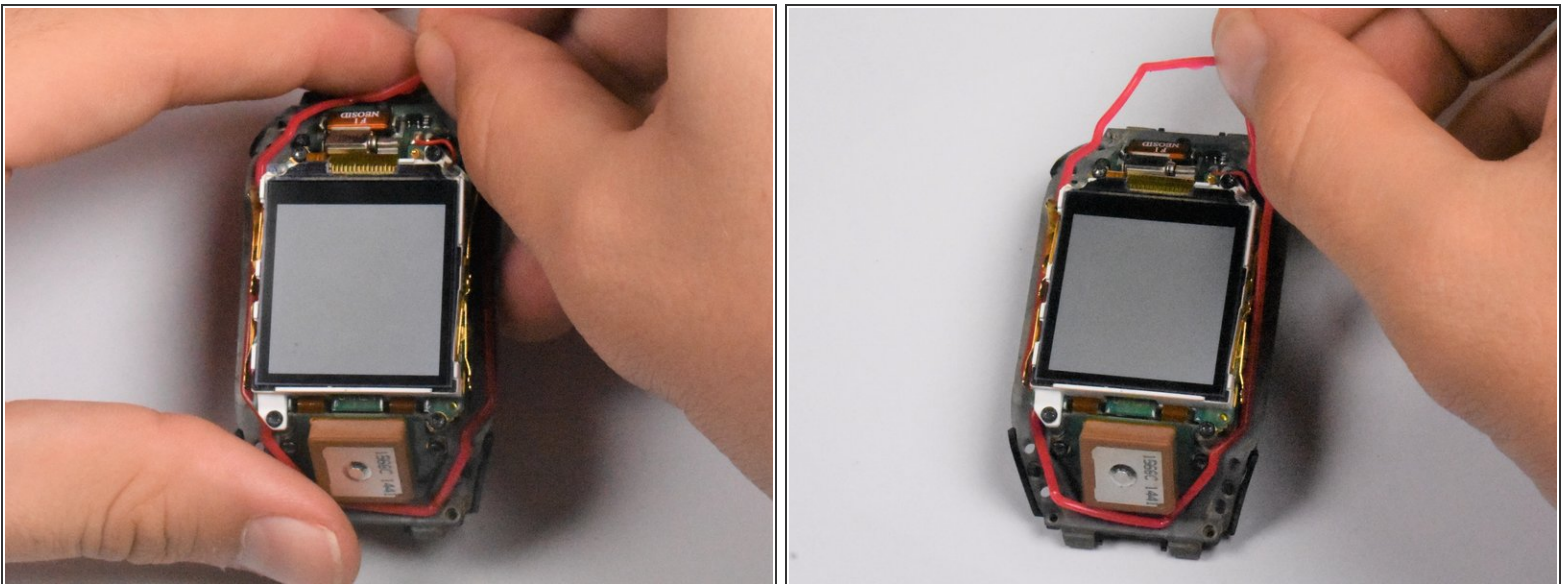
- Remove the eight, 7.4 millimeter-long screws on the back of the watch with a T5 head-type, torque screwdriver.

## Step 2



- Gently separate the watch housing from the back panel.
- i** The watch should come apart easily after removing the screws. If you experience difficulties separating the housing and back cover, use a spudger to gently pry apart the back panel and the button and screen protector housing.

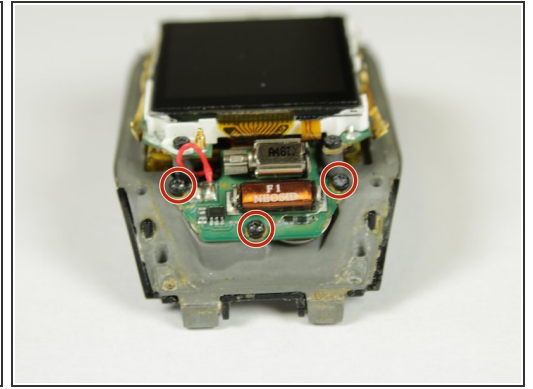
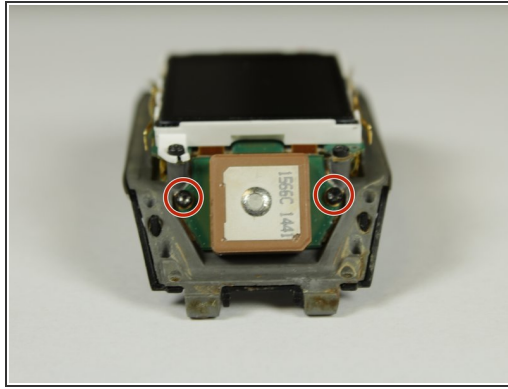
## Step 3



- i** The waterproofing seal is the red, elastic band that surrounds the display of the watch.
- Remove the waterproofing seal.
- ★** During reassembly, align the red seal in the groove surrounding the glass screen on the main watch housing to ensure a watertight seal.



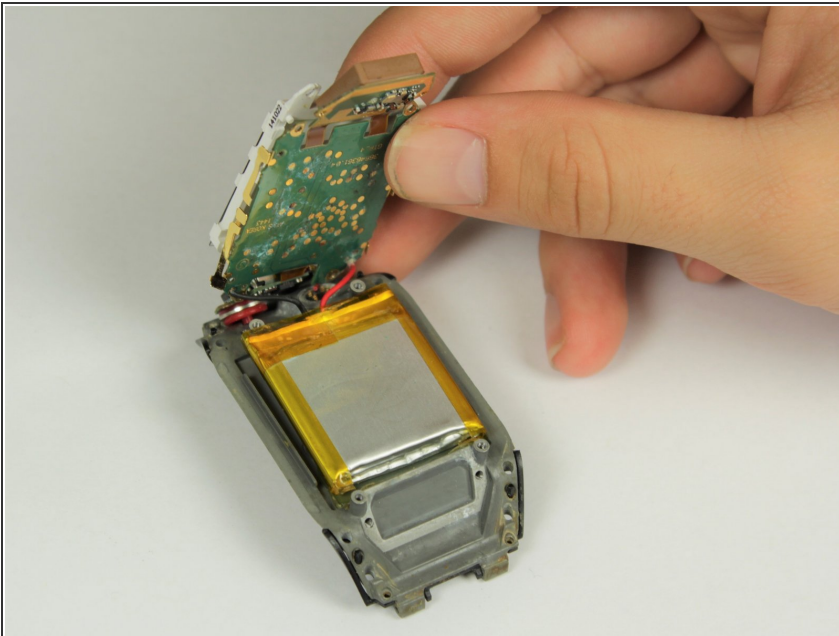
## Step 4 — Motherboard



**i** Though not necessary, following the [Polar V800 Display Replacement](#) first may make the motherboard easier to remove.

- Remove the nine, 4.0 millimeter-long screws with a T5 head-type torque screwdriver.

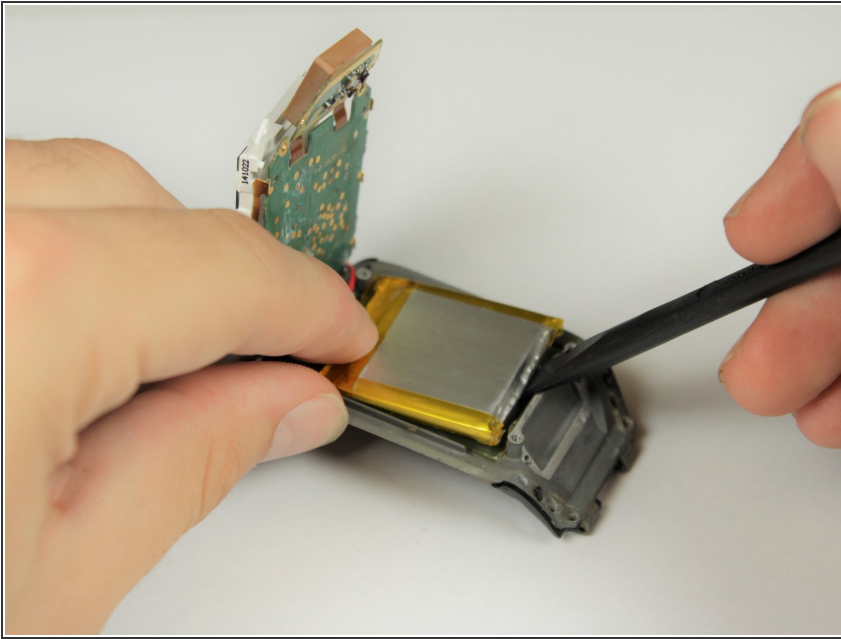
## Step 5



- Once all of the screws have been removed, lift the motherboard to expose the battery beneath motherboard.

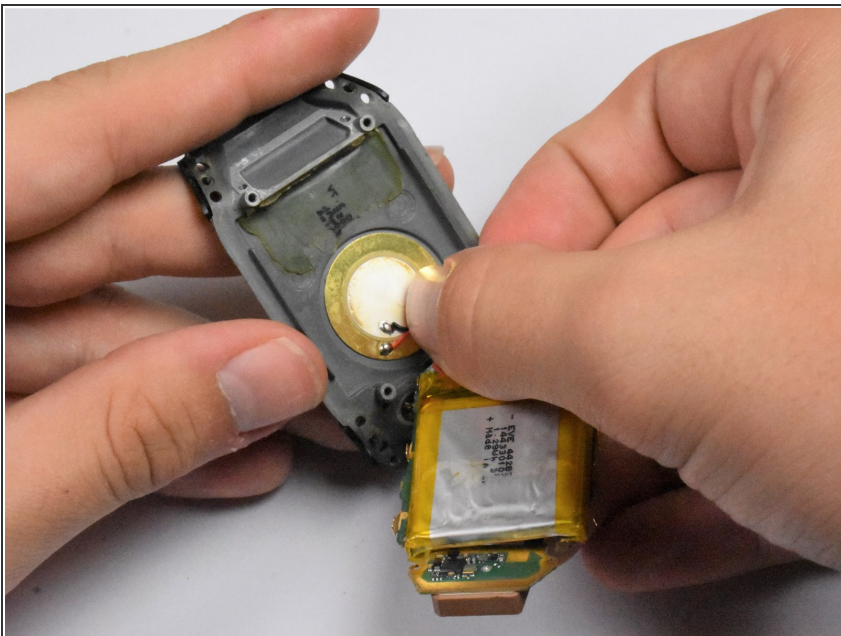
**i** A red wire and a black wire should run between the motherboard and the battery.

## Step 6



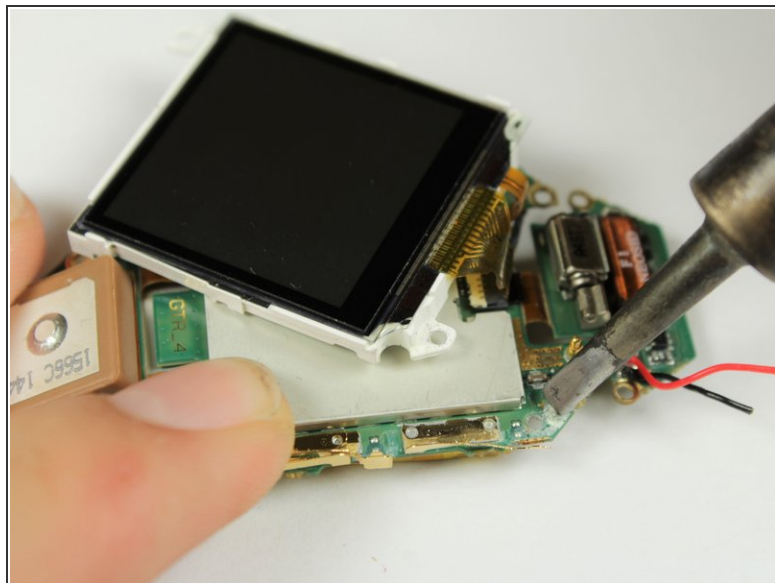
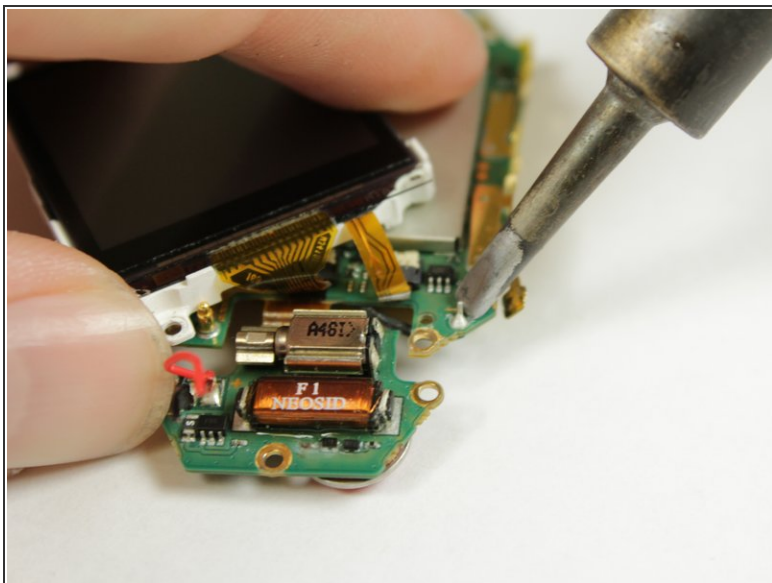
- ⓘ The battery is glued down to the back of the watch. It may take some force to detach the battery at the glue joint.
- Use a spudger to pry the battery from the back of the watch.
- ⚠ If your battery is swollen, be very careful in removing the battery. If the packaging is ruptured, the battery will be unsafe to handle with bare hands. The contents of the battery are hazardous.

## Step 7



- Gently pull the wires from their solder joints to disconnect them from the body of the watch.
- ⓘ If the wires do not come off easily, you may need to desolder the connections. Visit [How To Solder and Desolder Connections](#) for more help on soldering.
- ★ To reconnect the wires to their solder joints, they must be soldered on. See the guide linked above for more guidance.

## Step 8 — Battery



- To remove the battery, desolder the black and red wires connecting the battery to the motherboard and remove the battery. See this guide on [How To Solder and Desolder Connections](#) for additional help.

To reassemble your device, follow these instructions in reverse order.