



Polar V800 Display Replacement

This guide demonstrates how to replace the display on the Polar V800 sports watch.

Written By: Jarod Lyles



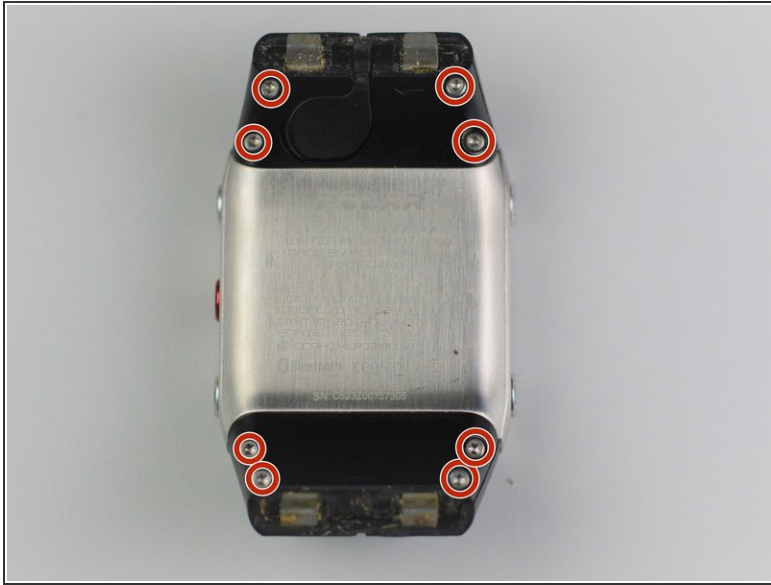
INTRODUCTION



This guide will show users how to replace the display (not the glass screen) on the Polar V800 sports watch. If the display has damaged pixels or no longer operates properly, the display may need to be replaced to keep your watch functional.

TOOLS:

- [T5 Torx Screwdriver](#) (1)
 - [Spudger](#) (1)
-

Step 1 — Waterproofing Seal



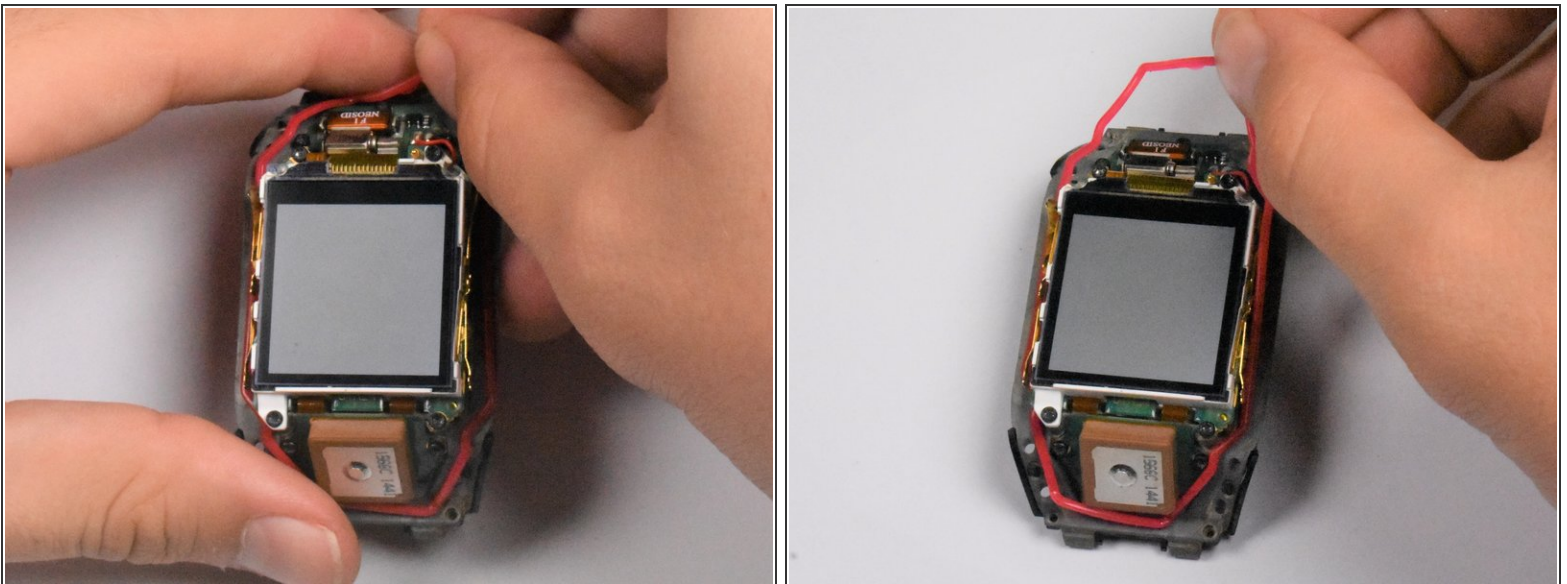
-  In this guide, the wrist band of the Polar V800 is removed for a clear view of the back panel. If you find it helpful, you may want to remove the wrist strap. Please reference the [Watch Band Replacement](#) guide for removal instructions if you wish to do so.
-  Ensure your Polar V800 sports watch is powered off before continuing.
- Remove the eight, 7.4 millimeter-long screws on the back of the watch with a T5 head-type, torque screwdriver.

Step 2



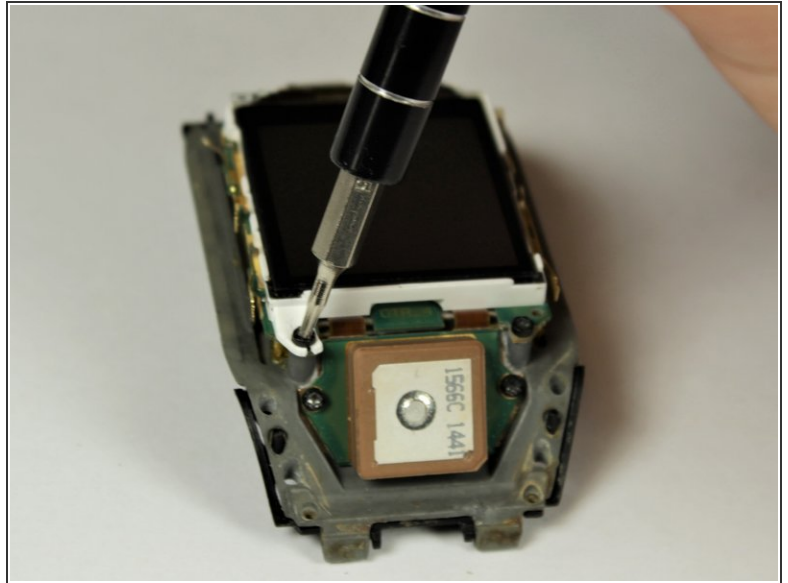
- Gently separate the watch housing from the back panel.
- ⓘ The watch should come apart easily after removing the screws. If you experience difficulties separating the housing and back cover, use a spudger to gently pry apart the back panel and the button and screen protector housing.

Step 3



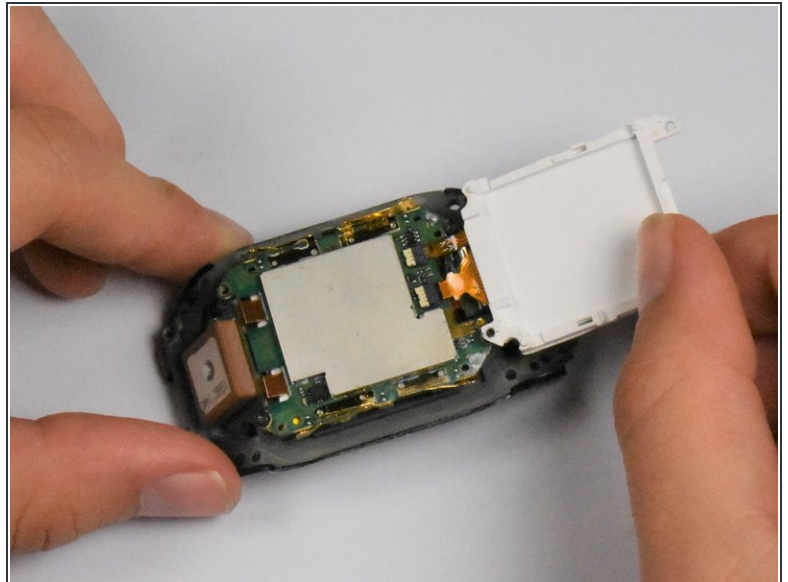
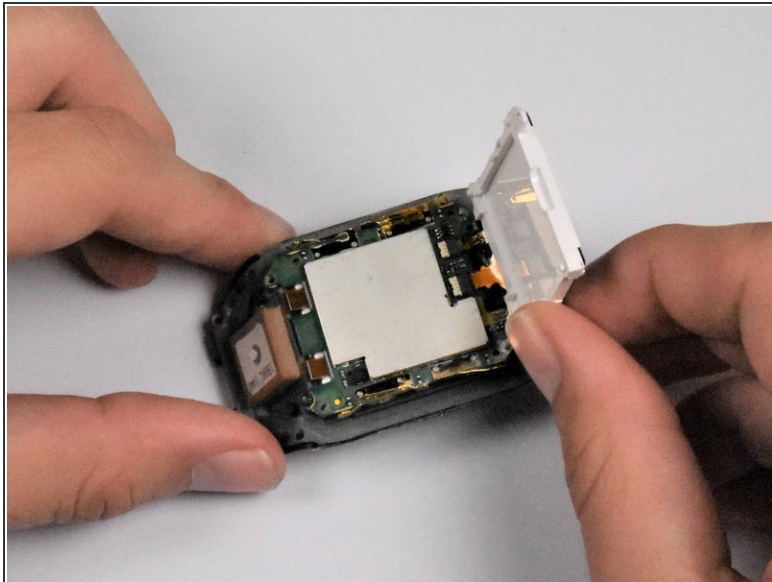
- ⓘ The waterproofing seal is the red, elastic band that surrounds the display of the watch.
- Remove the waterproofing seal.
- ☑ During reassembly, align the red seal in the groove surrounding the glass screen on the main watch housing to ensure a watertight seal.

Step 4 — Display



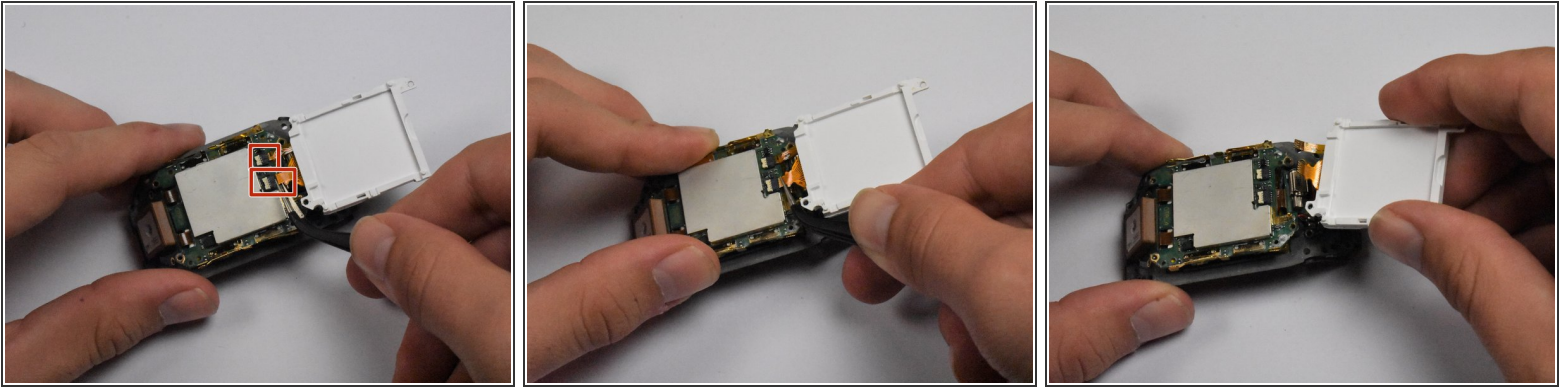
- Place a T5 torque screwdriver in the upper right and lower left diagonal 4mm screws that hold the white plastic down and rotate the screwdriver to the left, removing the screws.

Step 5



- Lift the display from the board from the top side of the watch, revealing the display connectors underneath.

Step 6



- Using tweezers, gently pull the display wiring out of the two connectors that attach the display to the motherboard.
 - ⓘ If the wiring isn't coming out very easily, try wiggling it as you pull it out.

To reassemble your device, follow these instructions in reverse order.