



Polaroid Automatic 100 Spread Roll Replacement

This is a step by step guide that explains how to replace the spread roll spring of your Polaroid 100 Automatic Land Camera.

Written By: Katie Miller



This document was generated on 2019-09-22 02:28:40 AM (MST).

INTRODUCTION

The spread roll spring is a vital part of the polaroid that ensures that your developing photo will exit the camera once your photo is taken.



TOOLS:

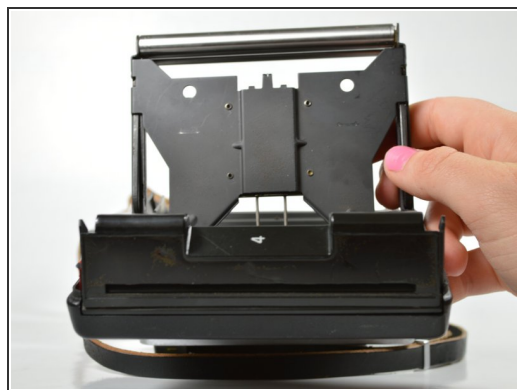
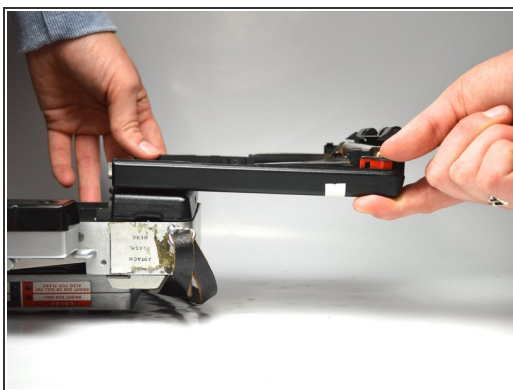
- [iFixit Opening Tools](#) (1)
 - [Flathead Screwdriver](#) (1)
-

Step 1 — Spread Roll



- Push the lever on the bottom of the camera towards the left.
- Open the rear door of the camera.

Step 2



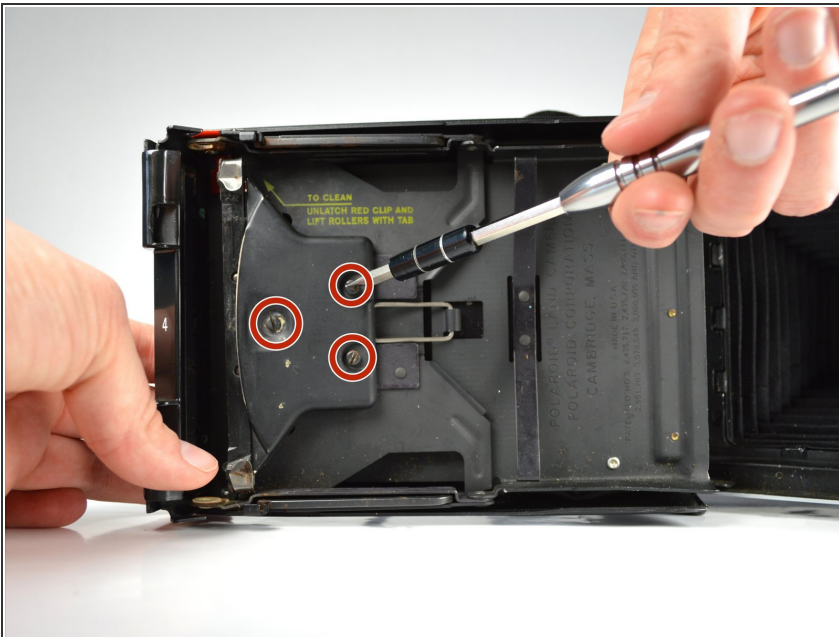
- Unlatch the red clip on the side.
- Lift the rollers up.
- Position the camera with the back cover closest to you.

Step 3



- Remove the rear roll by using the plastic opening tool to take it off the metal frame.
- Then remove the front roll by pushing away from you with the plastic opening tool.

Step 4



- Unscrew the three 2.5 mm screws (attached to the metal plate) with a 3.0 flathead screwdriver. Then take off the metal plate.

Step 5



- Pull the support rod out.

To reassemble your device, follow these instructions in reverse order.