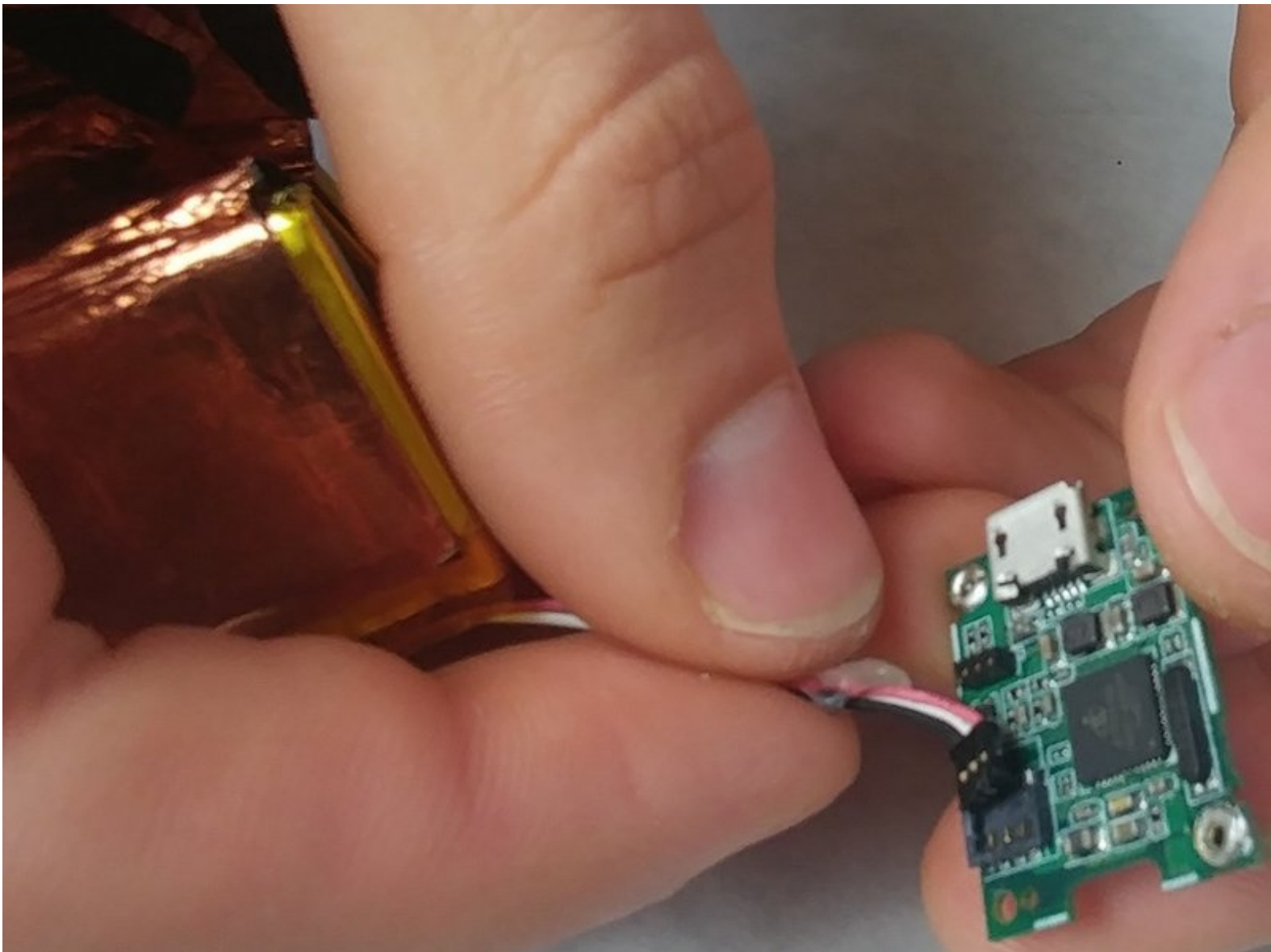




# Polaroid Cube Battery Replacement

Replacing your dying battery to bring power back to your Polaroid Cube.

Written By: heath lamkin



---

## INTRODUCTION

This guide will walk you through the steps of replacing the battery on your Polaroid Cube. Make sure the device is completely powered off before disassembly, and that you have all of the required tools.

---



### TOOLS:

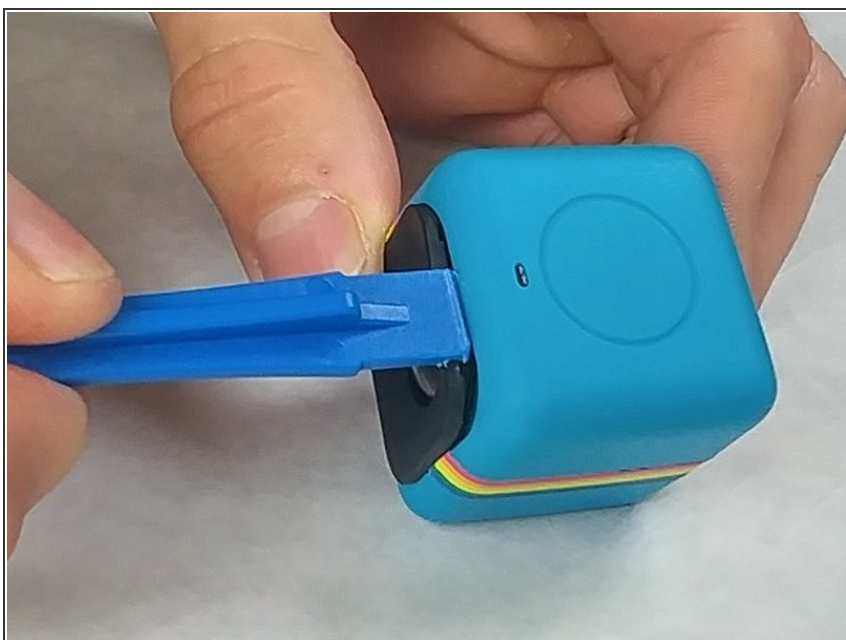
- [iFixit Opening Tools](#) (1)
  - [JIS Driver Set](#) (1)
-

## Step 1 — Battery



- Remove the SD card cover by twisting it using a Plastic Opening Tool

## Step 2



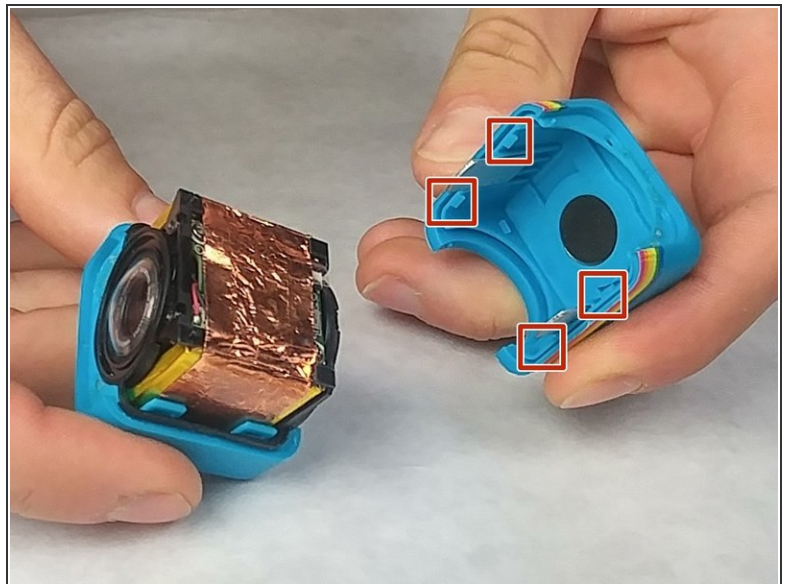
- Use the Plastic Opening tool to pry off and remove the front cover.

### Step 3



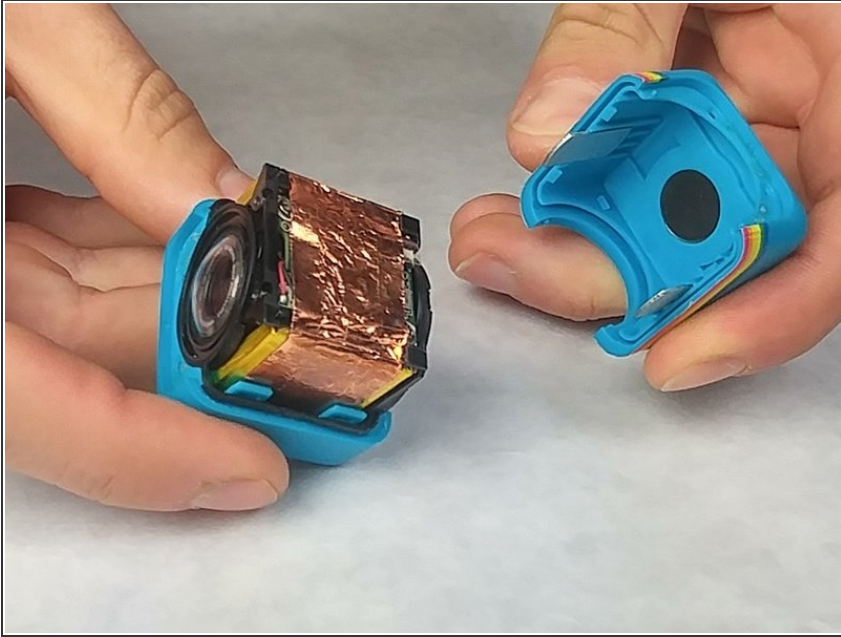
- Using a J00 head screwdriver, remove the four 3.27mm screws from the front of the camera near the lens.

### Step 4



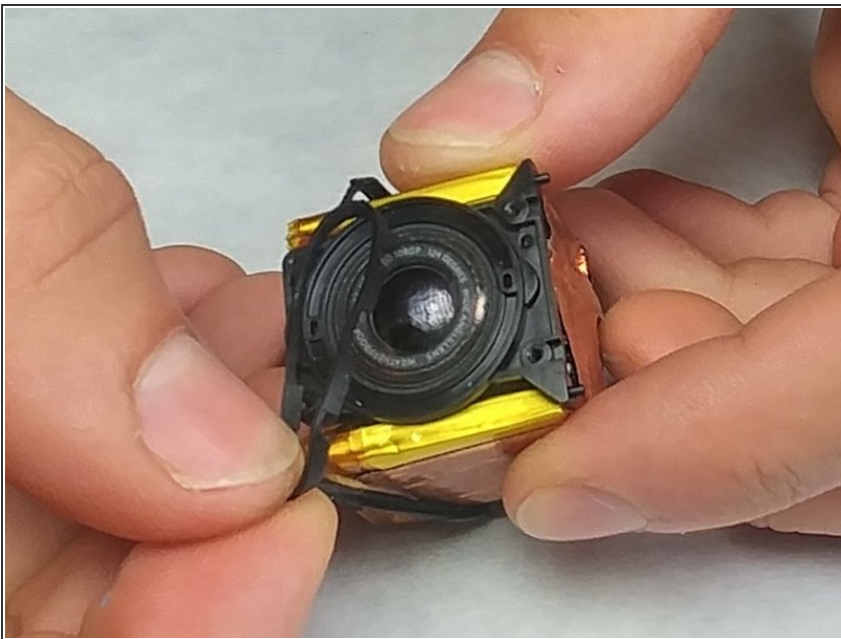
- Use the Plastic Opening Tool to pry open the shell of the camera.
- There are four latches, one at each corner, that you will need to detach.

## Step 5



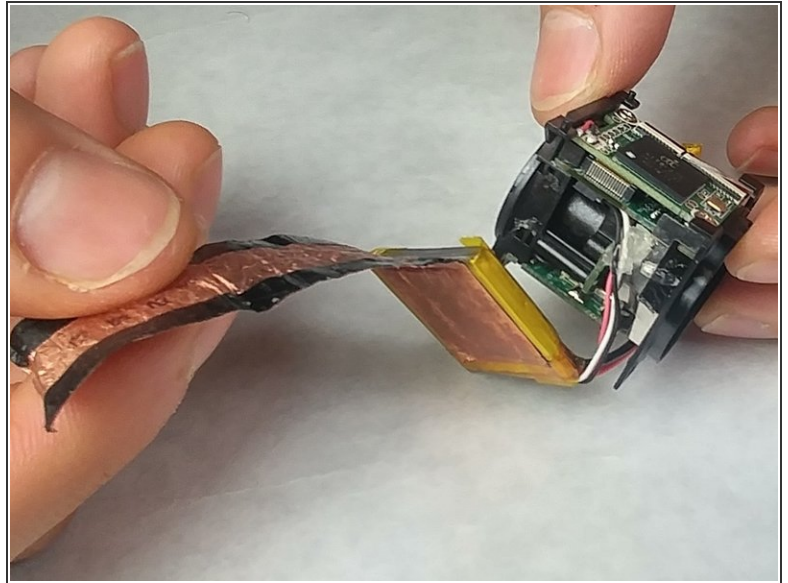
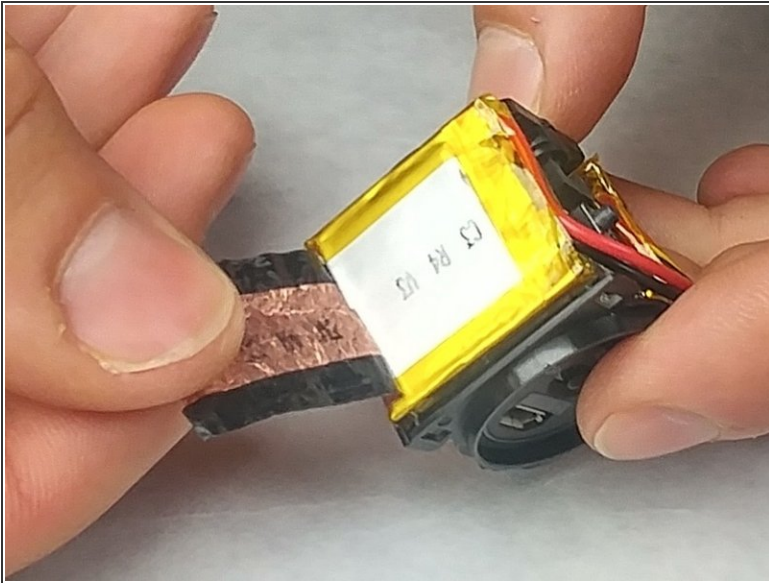
- Remove shell from top and bottom of camera.

## Step 6



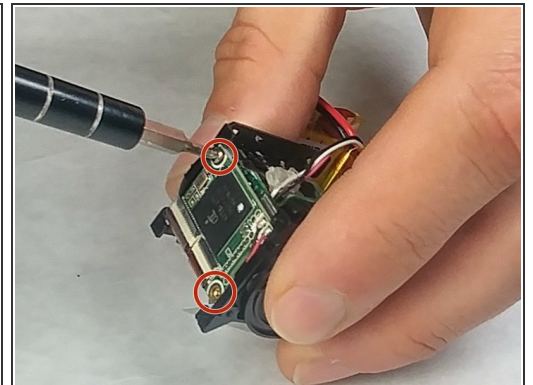
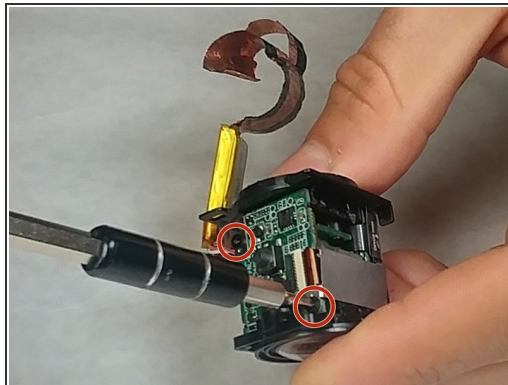
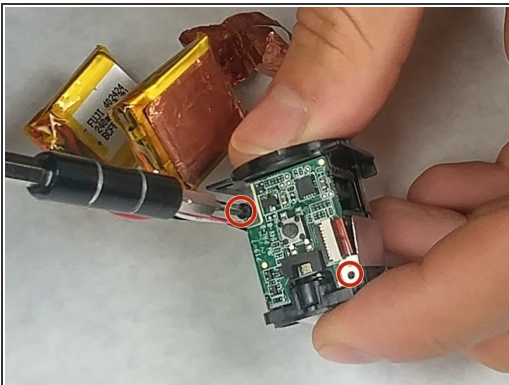
- Remove the rubber seal wrapped around the camera.

## Step 7



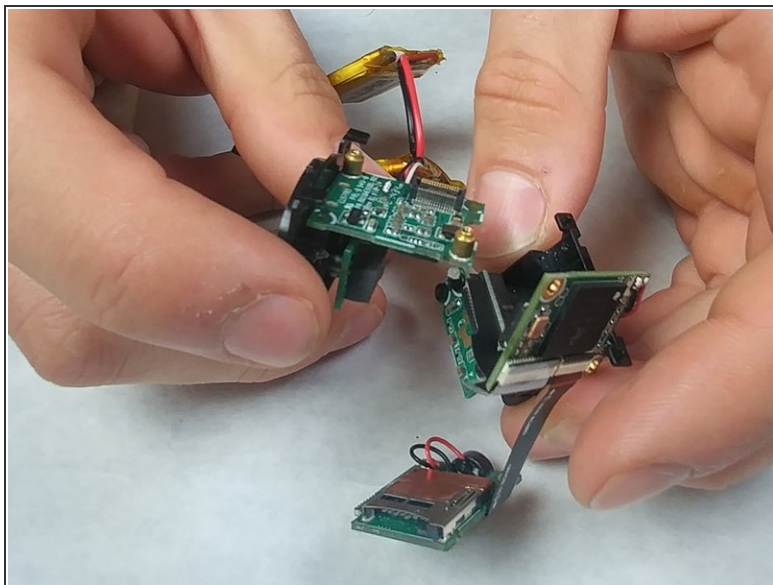
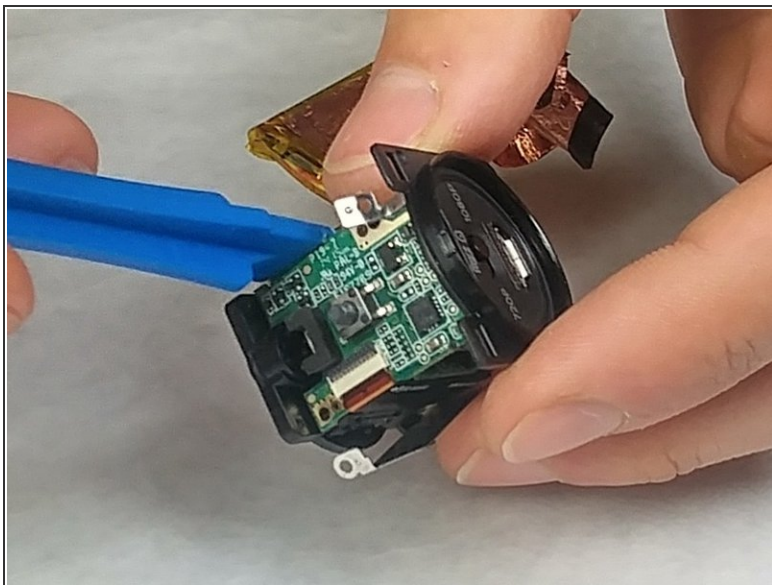
- Remove the tape wrapped around the battery.

## Step 8



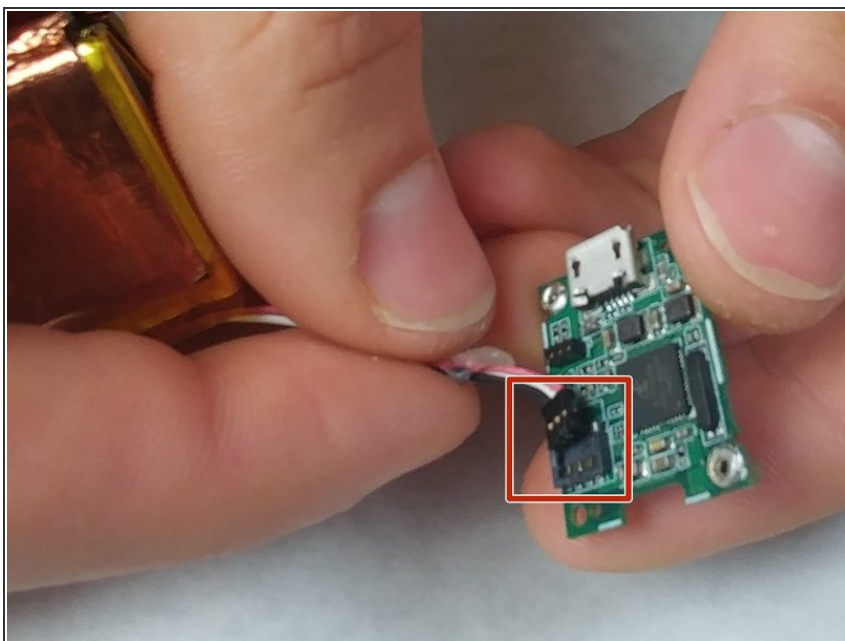
- Using a J00 head screwdriver, unscrew the four 3.46mm screws from the top and bottom circuit board.

## Step 9



- Use the plastic opening tool to remove the circuit board that the battery is connected to.

## Step 10



- Gently remove the battery pin connector from the circuit board.

To reassemble your device, follow these instructions in reverse order.