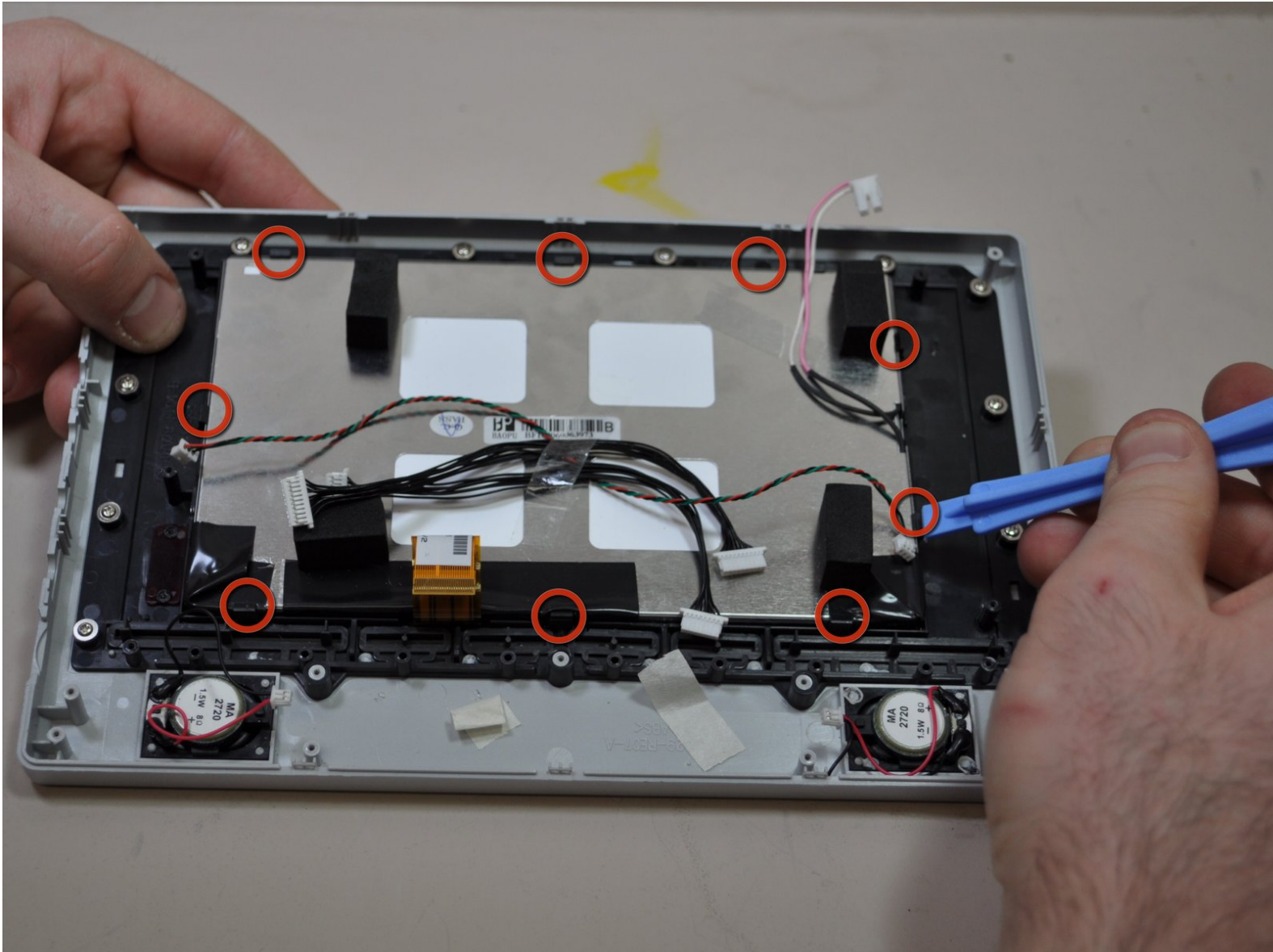




# Polaroid LCD-0700P Screen Replacement

Written By: Mario T

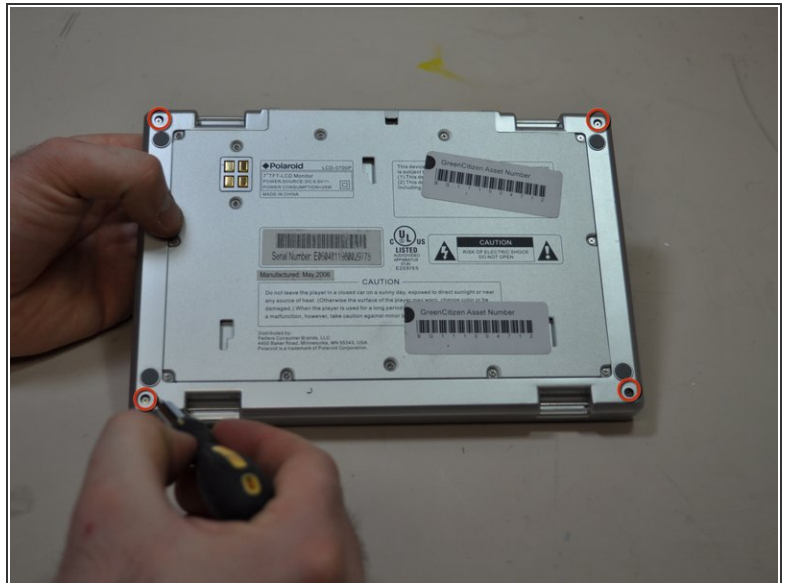




## TOOLS:

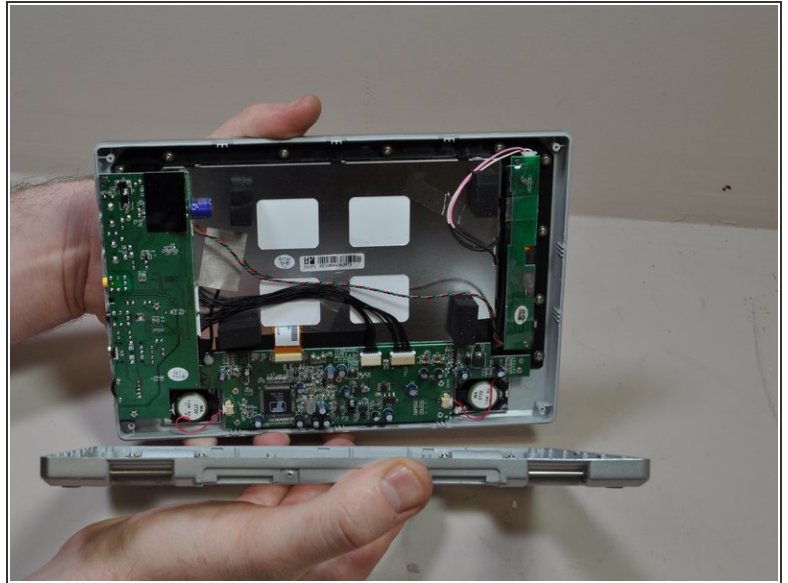
- [Heavy-Duty Spudger](#) (1)
  - [Phillips #0 Screwdriver](#) (1)
  - [iFixit Opening Tools](#) (1)
-

## Step 1 — Case



- Turn the entire device over, so that the underside of the device is facing upward.
- With the underside of the device facing up, locate the 11mm screw found in each far corner of the device. Remove the single 11mm screw from each of the four corners, using the Phillips #0 screwdriver.

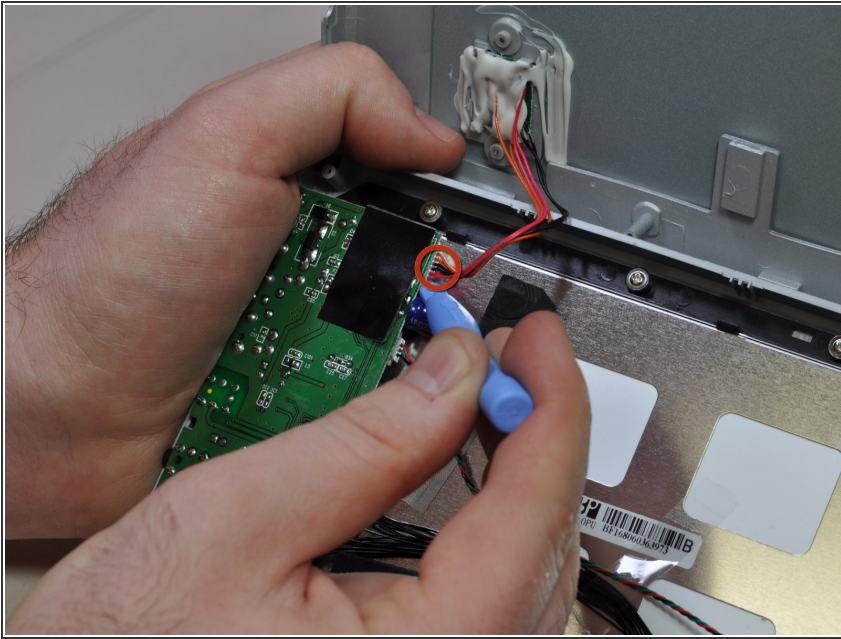
## Step 2



- Turn the device so that the underside faces you, and the edge where the case and device bind, faces upward. The opening of the device should be face down.
- In this position you will see a crease line between the device and the top cover. Gently Insert your blue plastic opening tool into the crack of the crease line, between the front and back cover to separate them.
- ⚠ Be careful when separating the front and back covers, as the two are held together by a thin wire.
- Separate the halves of the case.

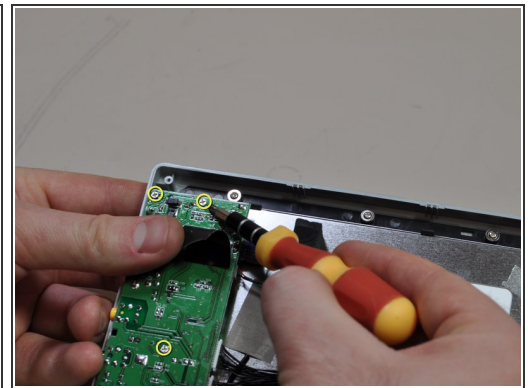
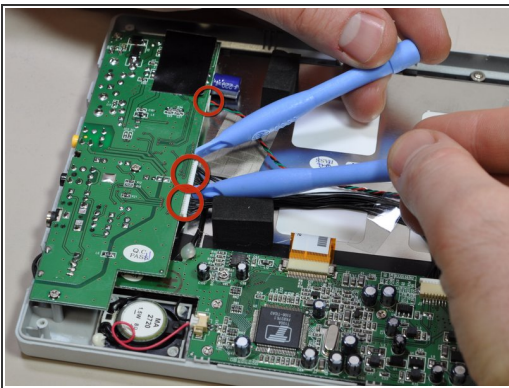


### Step 3



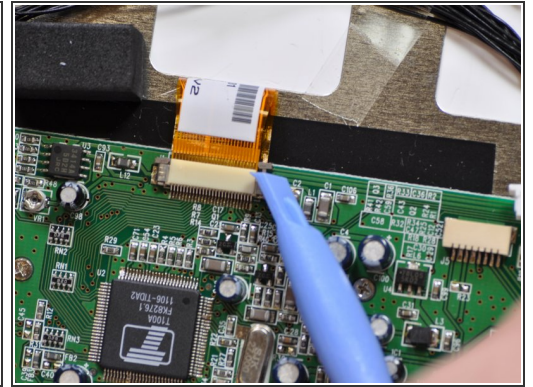
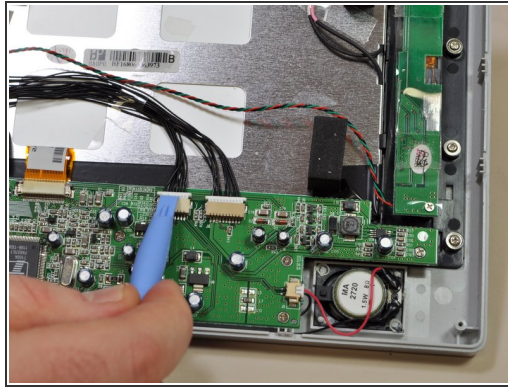
- Locate the input/output board on the top left hand corner of the device. It will look like a green circuit board with wires protruding and connecting to the case cover.
- Using your blue plastic opening tool, disconnect the multicolored wires located on the input/output board. These will be the same multicolored wires that connect the back cover to the input/output board.

### Step 4 — Input/Output Board



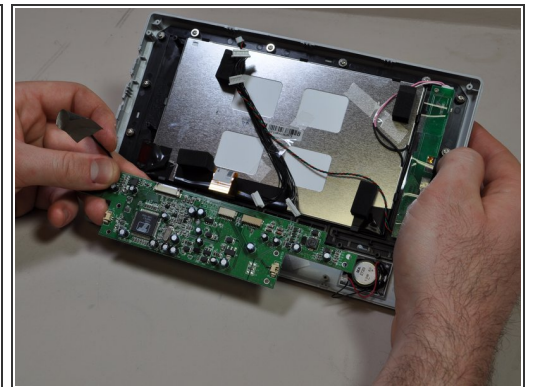
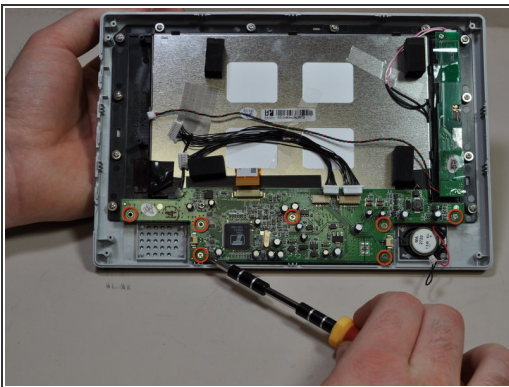
- Use two blue plastic opening tools to remove the three wire connectors on the side of the input/output board.
- Use a Philips #0 screwdriver to remove the five screws on the board.
- ⓘ One of the screws is hidden below the black tape, so gently pull the tape to the side to gain access to it. Be sure to replace the tape when reinstalling the board.
- Lift board from case.

## Step 5 — Logic Board



- Remove the five different connections to this board. Two from the speakers, two from input/output board and the orange ribbon cable.
- Remove connections from input/output board and speaker with the plastic opening tool.
- Remove the orange ribbon cable using the plastic opening tool to release the two brown retention tabs.

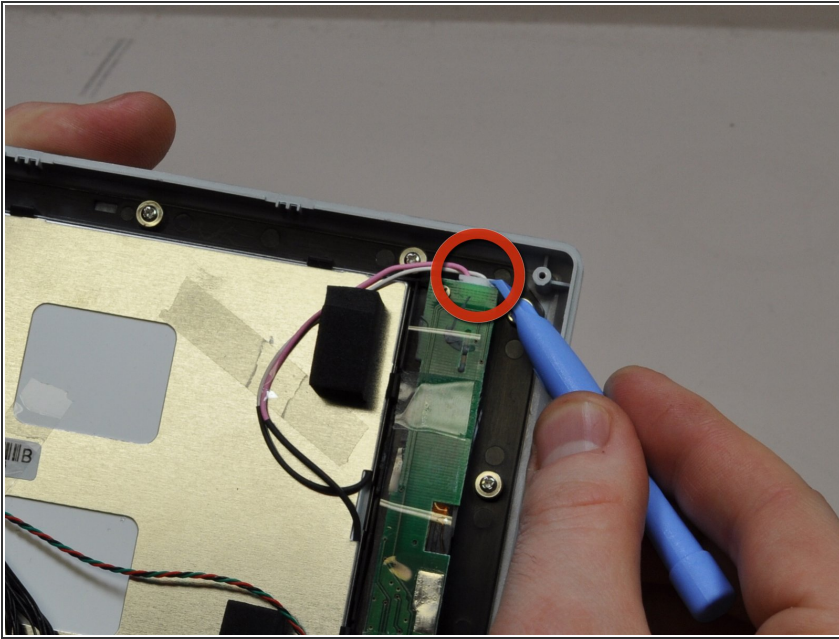
## Step 6



- Remove the seven 5mm screws using the Phillips #0 screwdriver.
- Detach the wire mesh tape connection the logic board to the LCD screen with the sharp end of the spudger.
- Remove the logic board with your hands.

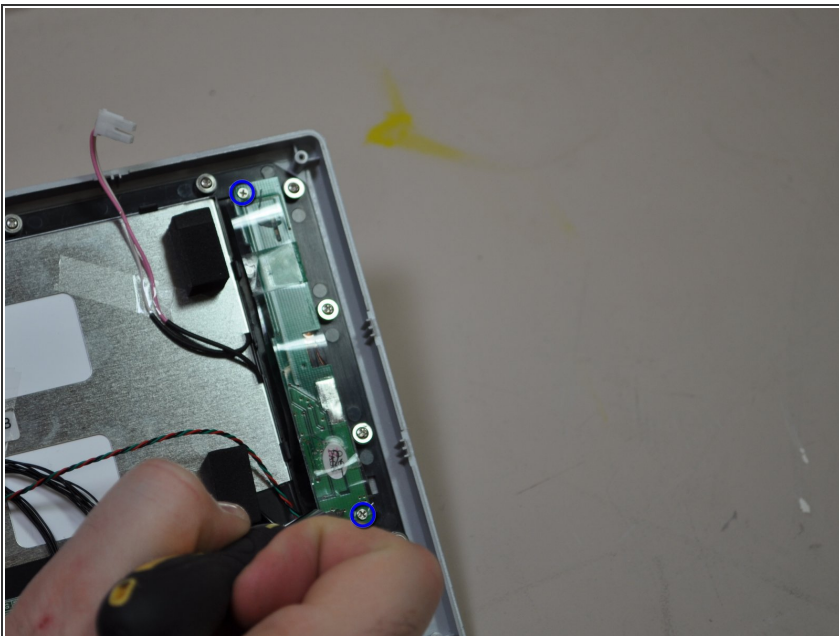


## Step 7 — LCD Power Board



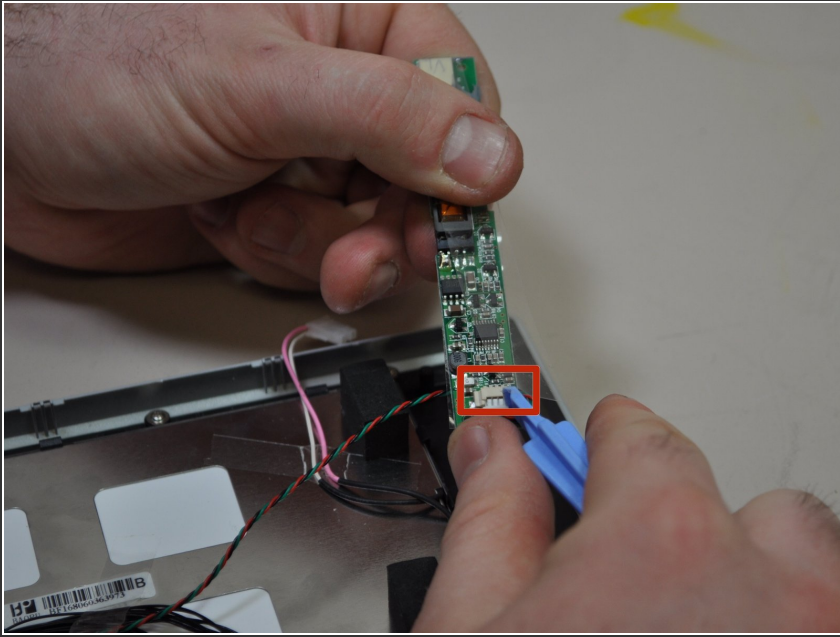
- Find the LCD power board located on the top right hand corner of the device (The LCD power board will be the long green circuit board with a pink and white wire emerging from the top).
- Using your blue plastic opening tool, remove the wire connections from the LCD power board located on the top of the board (These will be the pink and white wires).

## Step 8



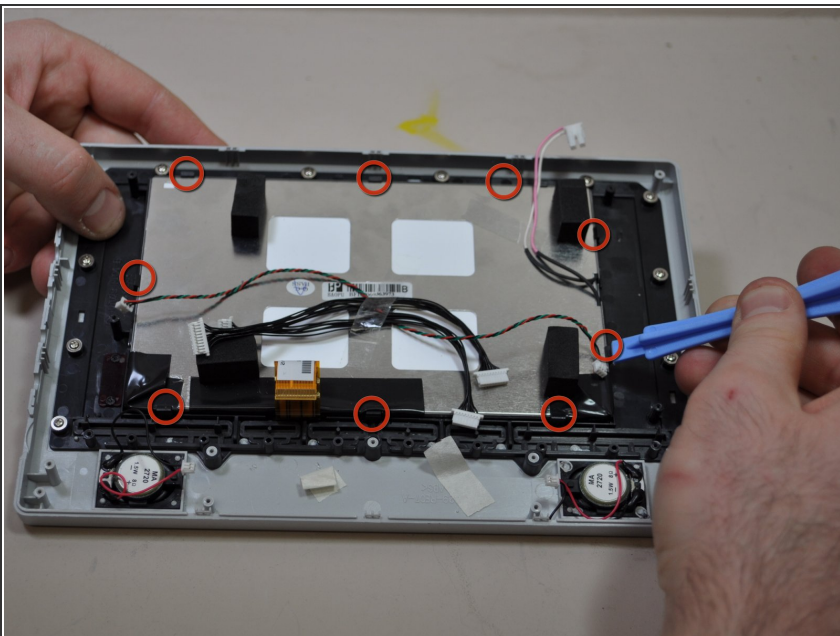
- Locate the two 5mm screws on the LCD power board. One screw will be in the top left corner, the second will be in the bottom right corner.
- Remove the two 5mm screws with your Phillips #0 screwdriver.

## Step 9



- Lift the LCD power board out of the device (There will still be wires connecting the board to the device).
- Vertically flip the LCD power board so that the side that was originally facing the device is now facing up. Using your blue opening tool, remove the connection (multi-colored and twisted wire) from the Input/Output board.

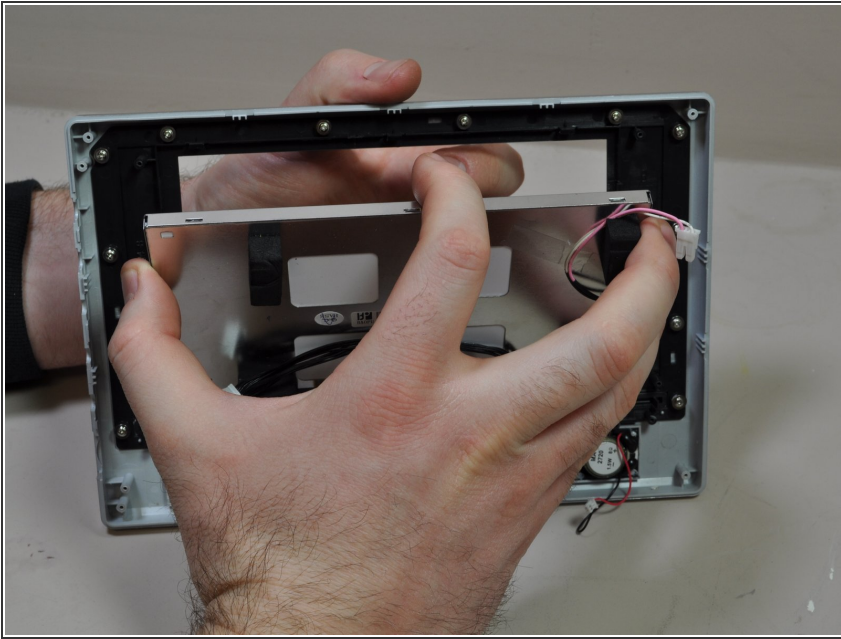
## Step 10 — Screen



- Use a plastic opening tool to release the top and side retention clips.
- ⓘ It may be easier to release all of the necessary clips by pushing gently on the front of the screen to keep the disengaged clips from re-engaging.



## Step 11



- Pivot the screen downward to disengage the remaining clips and lift the screen from the front bezel.

To reassemble your device, follow these instructions in reverse order.