



A collection of disassembled Polaroid One Step camera parts, including the main body, lens assembly, viewfinder, and various internal components, laid out on a white surface. The parts are arranged in a somewhat organized manner, showing the internal mechanism of the camera. Key components visible include the main camera body, the lens assembly with the lens element, the viewfinder, the flash unit, and various internal gears, springs, and electronic components. The disassembly is complete, showing the internal mechanism of the camera.

INTRODUCTION

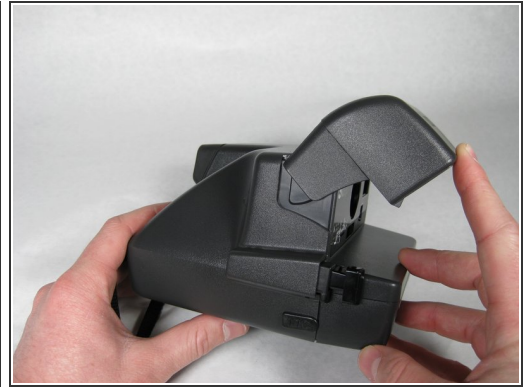
This guide shows you how to completely disassemble your camera.



TOOLS:

- [Flathead Screwdriver](#) (1)
 - [Spudger](#) (1)
 - [Tweezers](#) (1)
-

Step 1 — Polaroid One-Step 600 Teardown



- Open the flash/lens compartment of the Polaroid camera to a 30 degree angle with the horizontal.

Step 2



- Separate the flash section of the camera from the main body by unhooking the sides.

⚠ BE CAREFUL NOT TO YANK THE TWO SECTIONS APART BECAUSE THE BAND WIRE STILL ATTACHES THEM!

Step 3



- Open the battery/ cartridge compartment fully.

Step 4



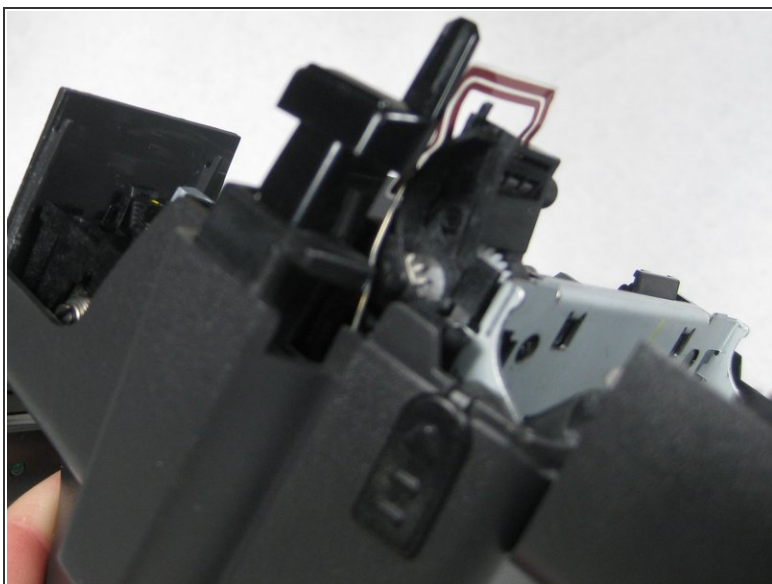
- Insert spudger in between face of camera and sides where the four tabs are located.

Step 5



- Once tabs are released, pull face of camera straight out.

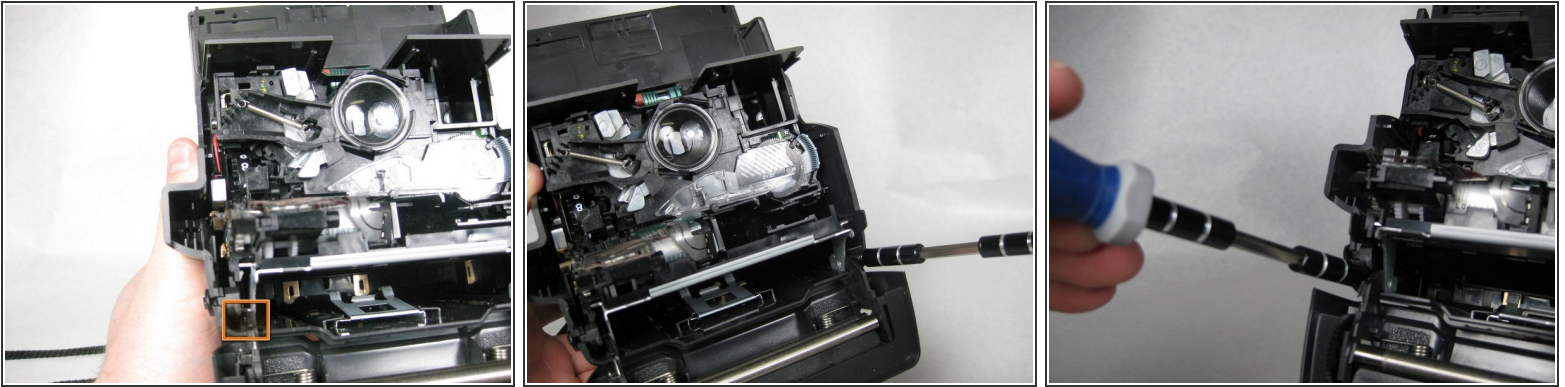
Step 6



- Remove the capture button if it did not pop out when you removed the face.

- ☒ There are two pieces to the capture button and both should be removed.

Step 7



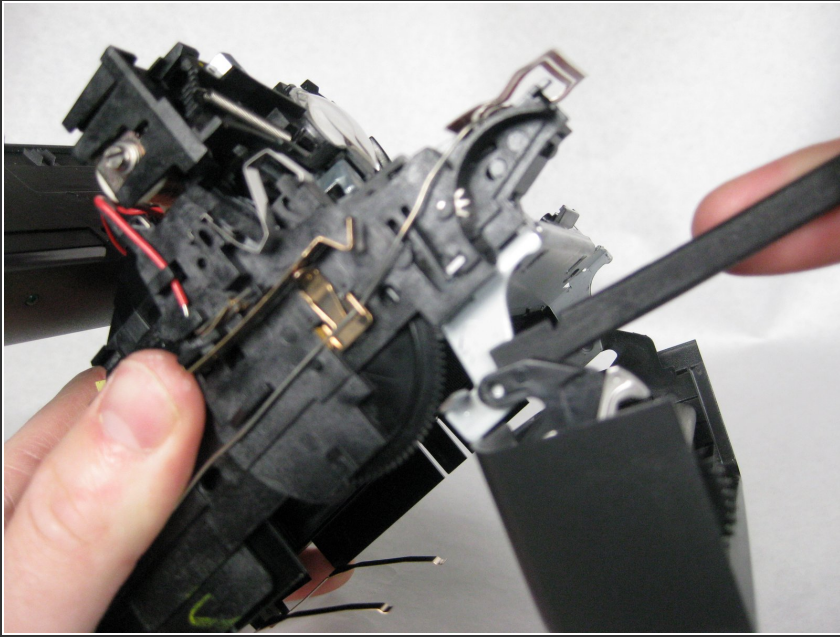
- To remove the back of the camera, you have to find the tabs located near the hinges of the battery and film compartment.
- Using a screw driver, pry the tabs of the outer case away from the metal frame.
- Once the tabs are removed slide the metal frame forward.

Step 8



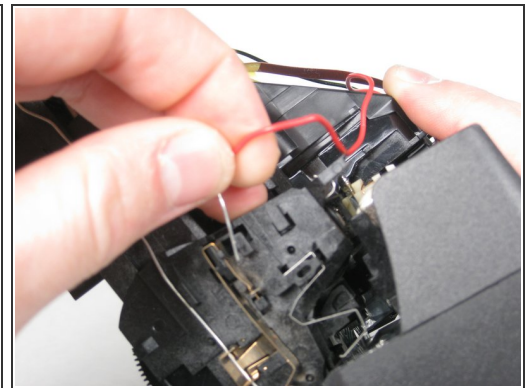
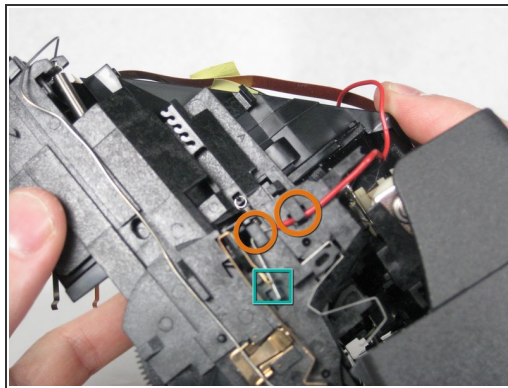
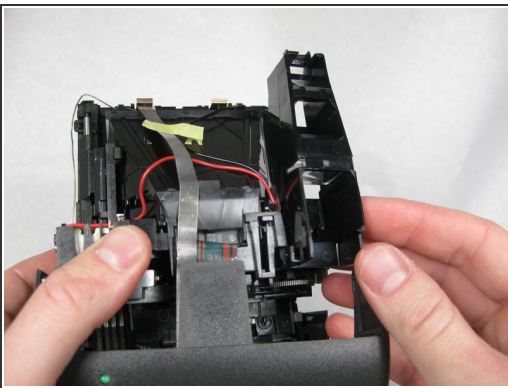
- Remove the battery and film compartment latch
 - Pull the metal frame away from the case.
- i** The entire case will come off but the flash compartment will come with the insides of the camera.

Step 9



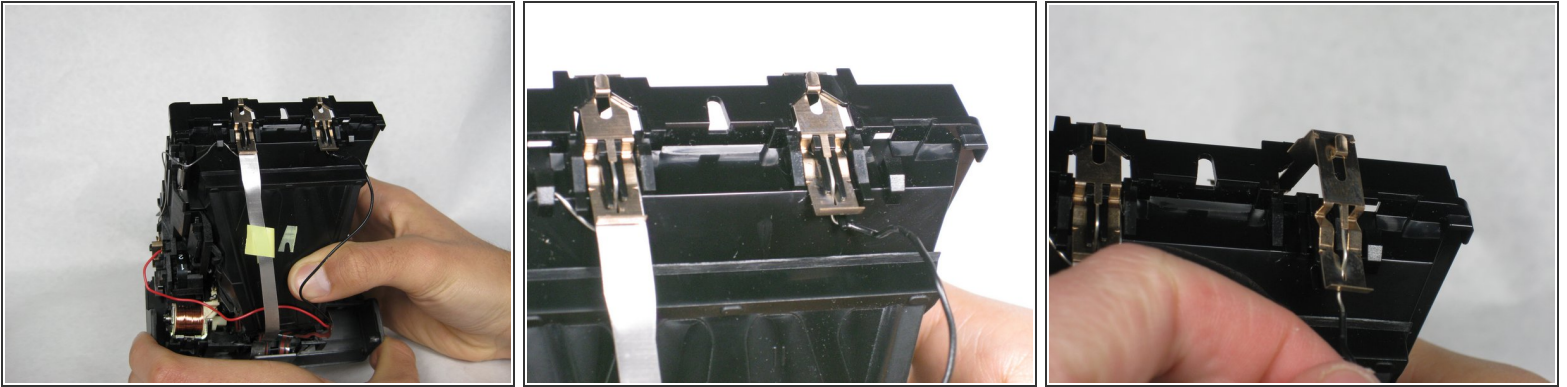
- Using a spudger, pop the battery and film cartridge hatch from its hinges.
- The tabs are located at the bottom of the metal frame.

Step 10



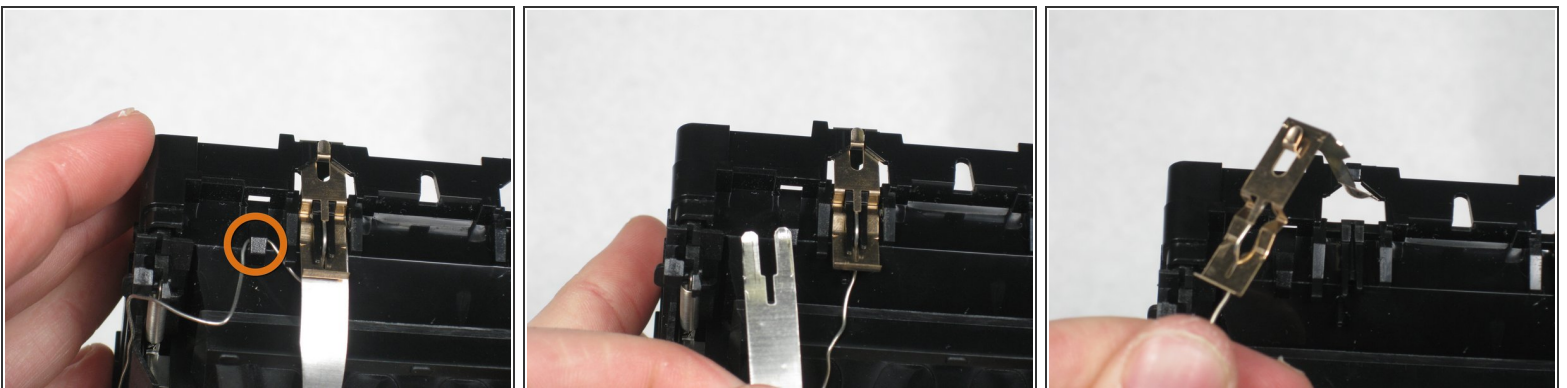
- Remove the sight by lifting it straight up.
- Follow the red wire from the flash compartment
- Take the red wire off of the 2 hooks
- Slide the uncovered wire end out of the small brass clip. Move wire away from camera.

Step 11



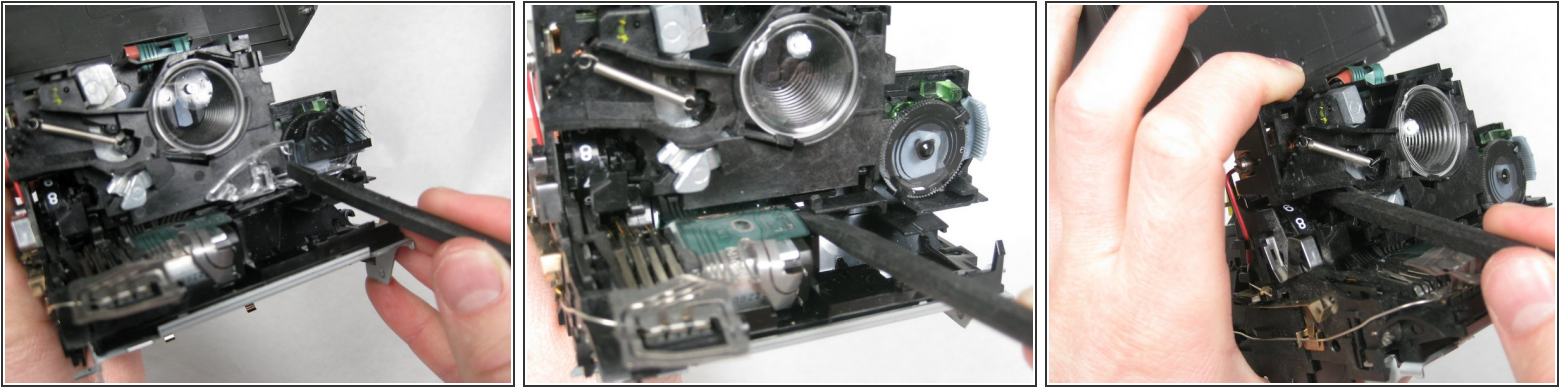
- Follow the black wire from flash bulb to the back of the case.
- When you find the brass tab, pull it up. When the tab is free, remove the tab from the black wire.

Step 12



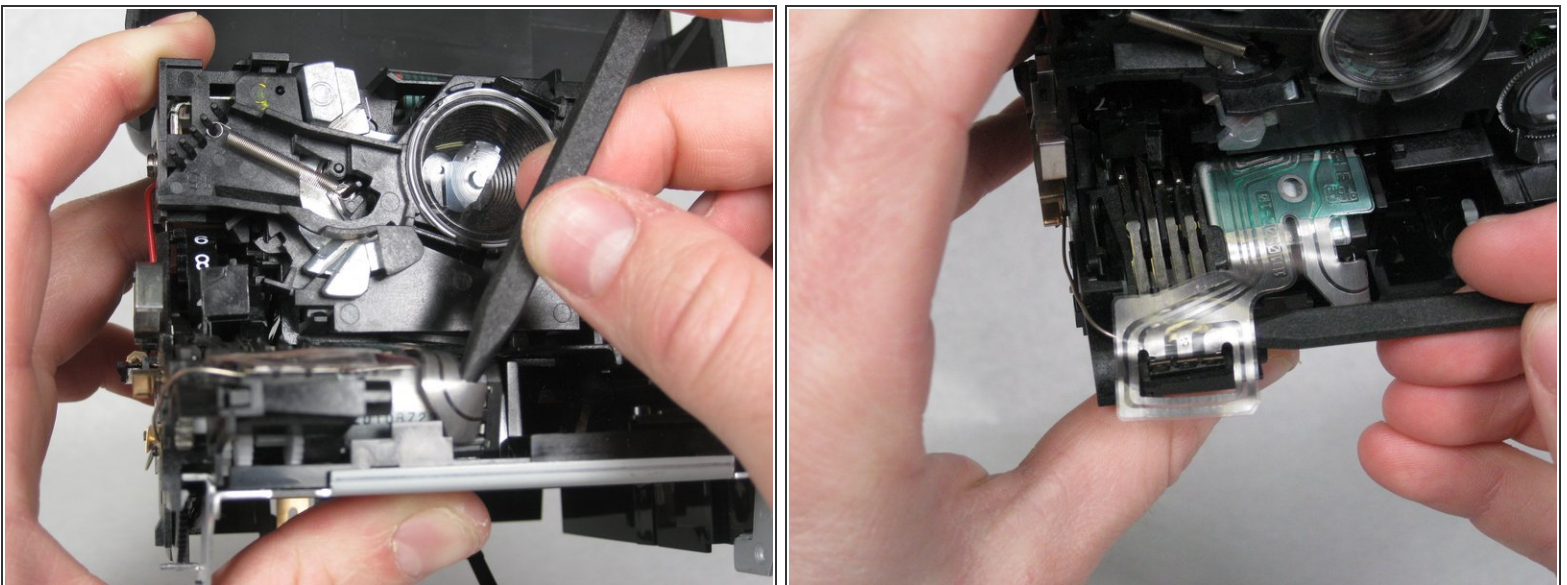
- Follow the metal band from the flash compartment to the brass tab.
- Unhook the wire on the left of the brass tab.
- Remove the metal band from behind the brass clip.
- Set the now detached flash compartment to the side.
- Pull the brass tab up and out like the first one and remove the uncovered wire.

Step 13



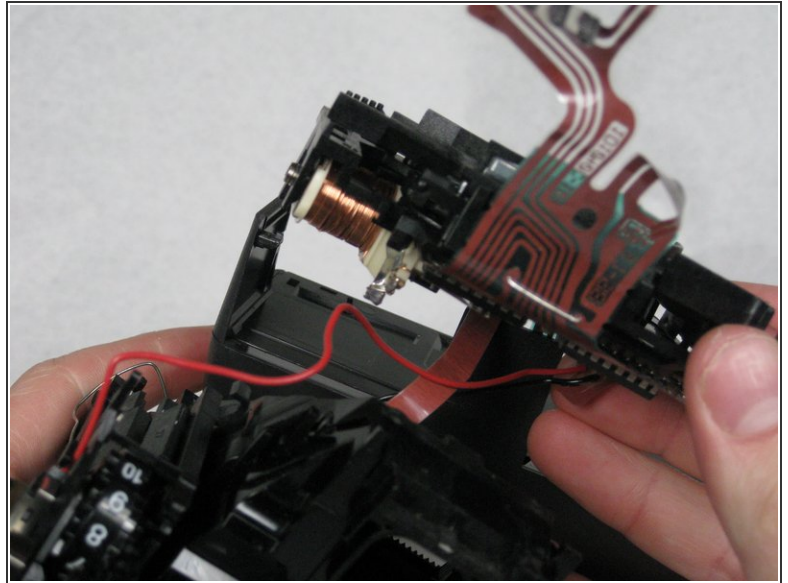
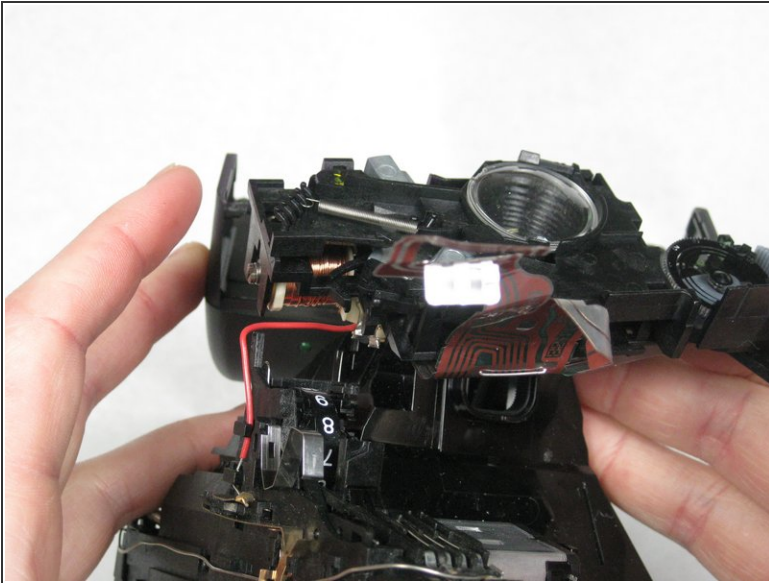
- Slide the brightness adjuster to right and off the camera.
- Use the pointed end of the spudger to lift a small latch located next to the bottom of lens plate
- Then find the small latch located below the plastic bridge that is over the shutter mechanism
- ⓘ This latch is small and is hard to see but you just have to push it with the pointed end of the spudger to unlatch it.

Step 14



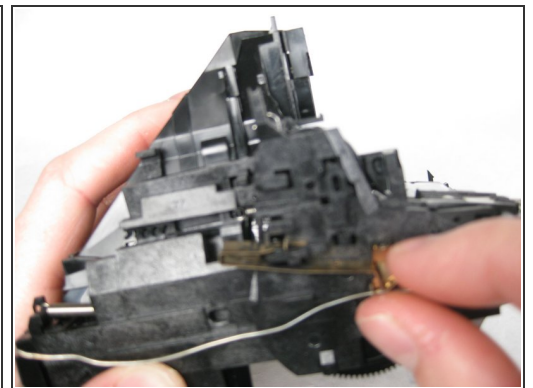
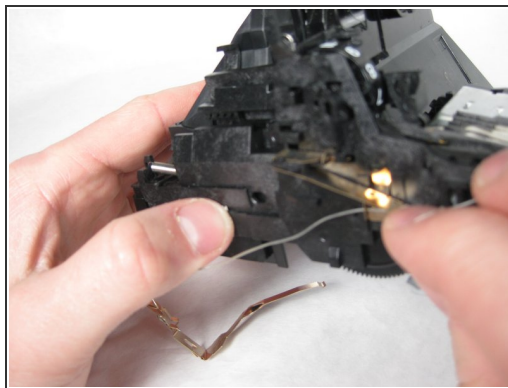
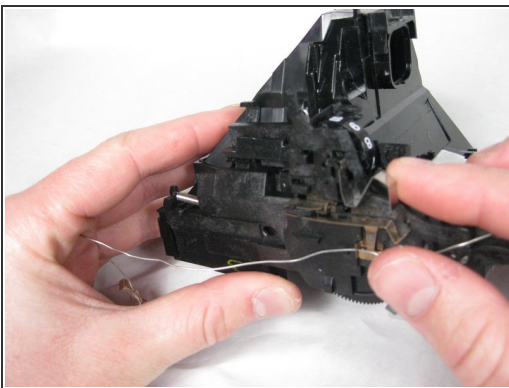
- Using the pointed end of the spudger, pull the band wire out of the electric motor.
- In the same manner as above, remove the band wire from the plastic extension.

Step 15



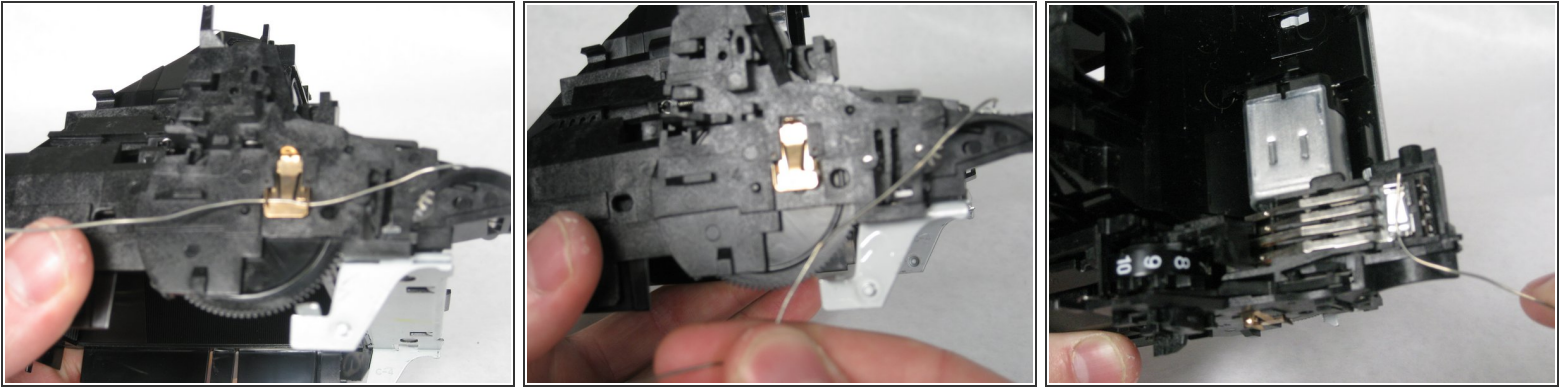
- Rotate the lens plate up to unhook the plate from two tabs located at the top of the plate.
- Remove the lens plate, flash compartment and wires from the camera.

Step 16



- Follow the uncovered wire around the side of the camera
- Remove the metal spring tab next to the counter
- Remove the brass tab by lifting the top piece over the notch and sliding back.

Step 17



- Locate the small brass tab with the uncovered wire running through it.
- Remove the wire by sliding under the hooks.
- then unhook the uncovered wire from the the final latch located on the top of the plastic extension.

Step 18



- The cameras insides could now be in two major pieces.
- The Pyramid and the lens plate

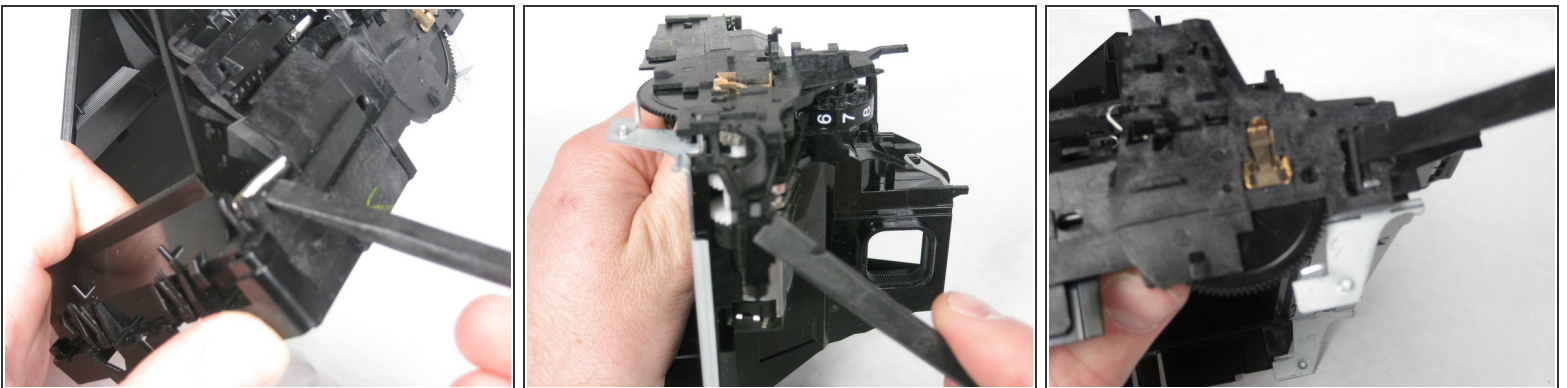
Step 19



- The top of the pyramid has cover that can be lifted off
- Below is the mirror which is held in by a tab.
- Lift the tab with the spudger and pop out the mirror.

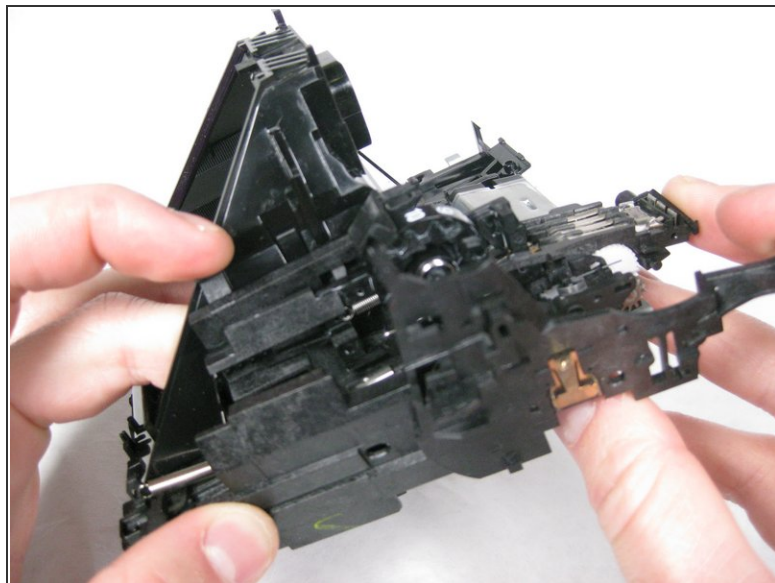
⚠ If you intend to reassemble the camera make sure the mirror is completely clean without any spots or fingerprints because they will affect the quality of your pictures.


Step 20




- There are 4 tabs total that must be removed for the next step
- The first is directly under the spring mounted at the back left of the camera
- The next is located on the front of the plastic extension
- The third tab is used to connect the metal frame to the outer plastic

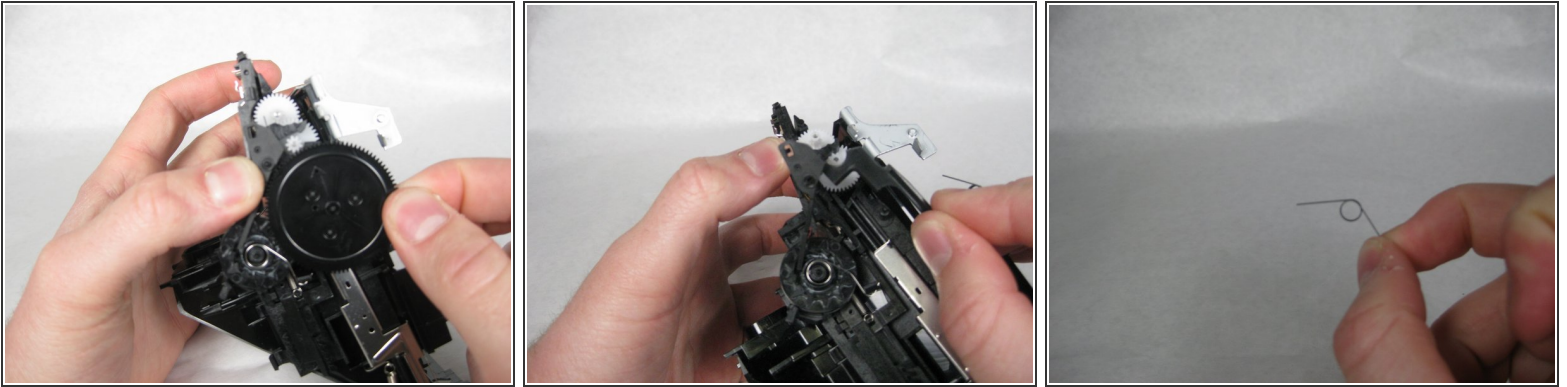
Step 21



 The final tab holds several spring loaded pieces together, these may pop out the moment the tab is released.

- The final tab is located below the backside of the photo-counter dial.
-  The numbers will be right side up if you are looking in the right direction.
- Once all four tabs are removed the plate pulls out from the slot in the rear.

Step 22

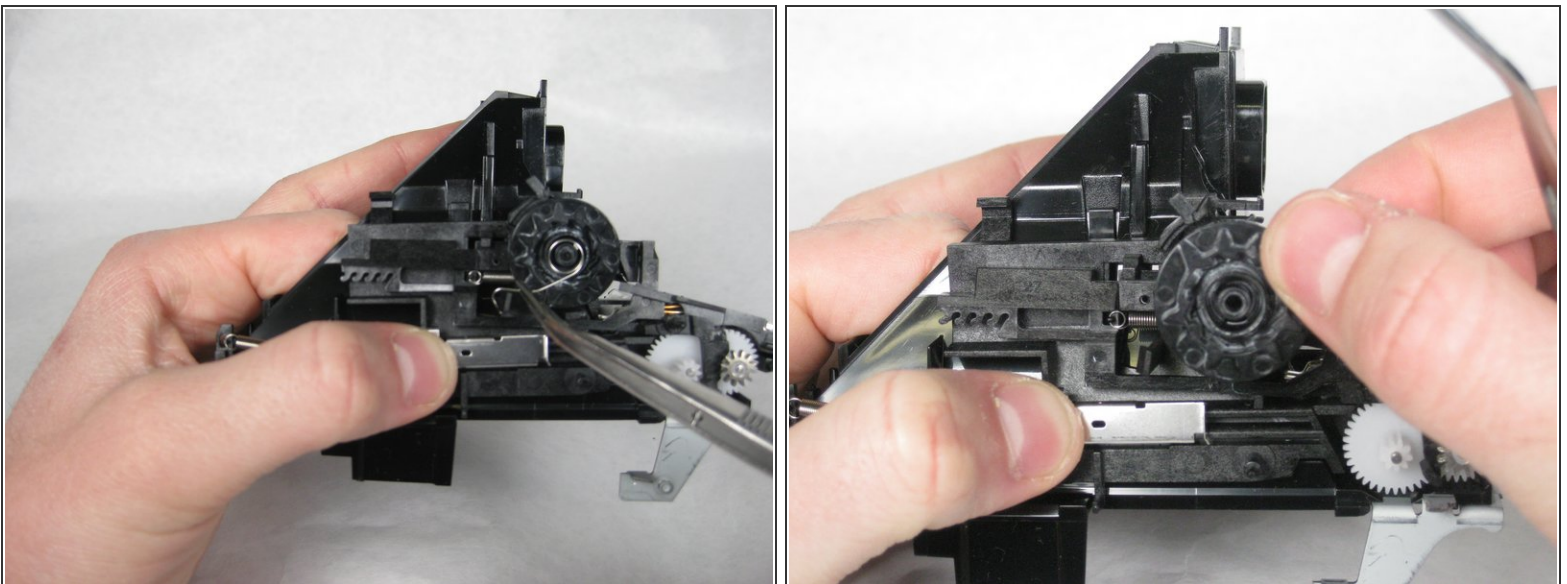


- Lift the large gear away from its pin

⚠ The next piece is loaded with a small spring.

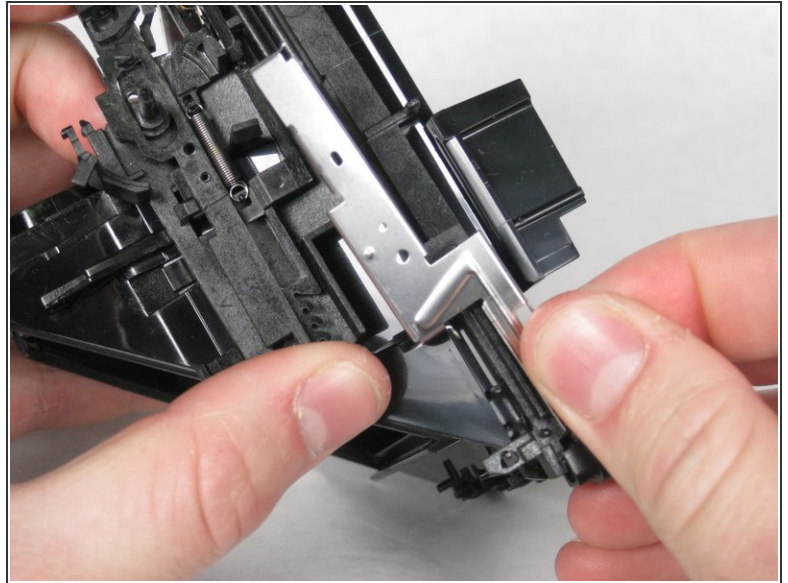
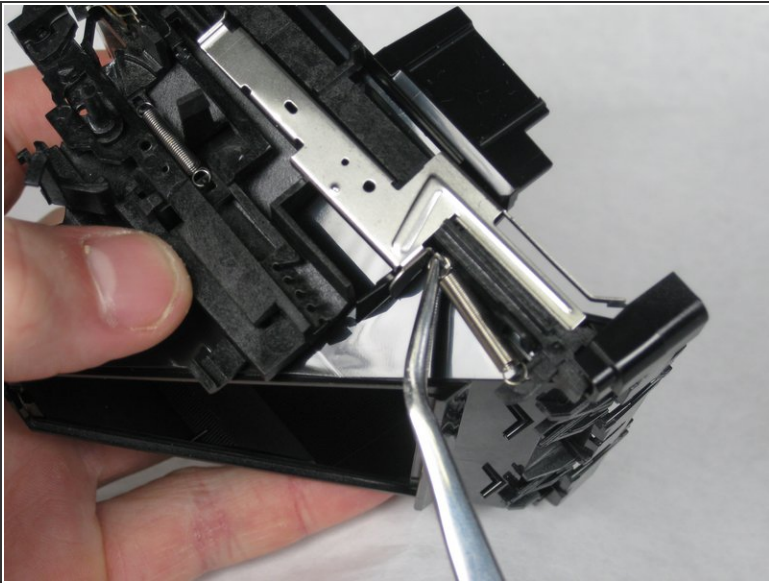
- Carefully lift the "Y" shaped plastic piece from its pin and pull the spring from the pin as it is removed.

Step 23



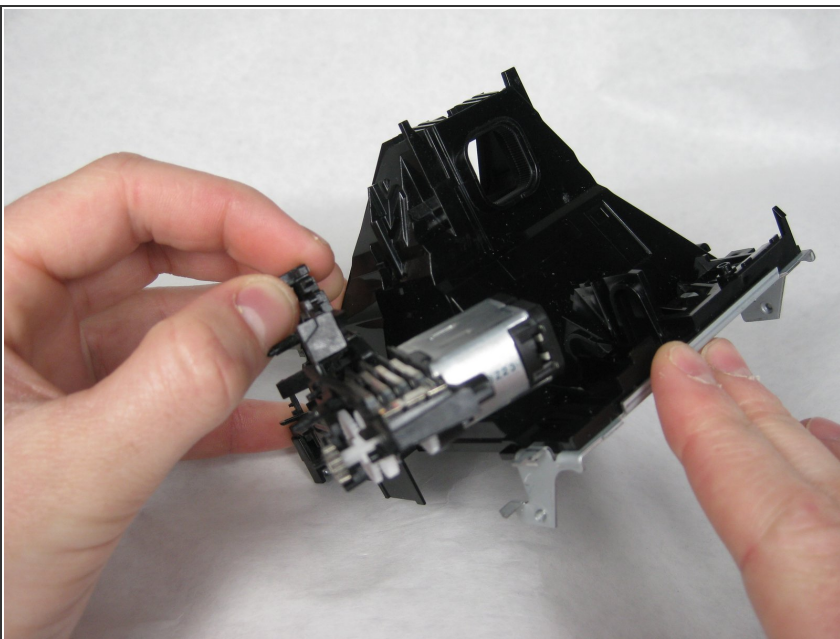
- Remove the Spring attached to the photo-counter dial.
- Lift the photo-counter Dial off of its pin.

Step 24



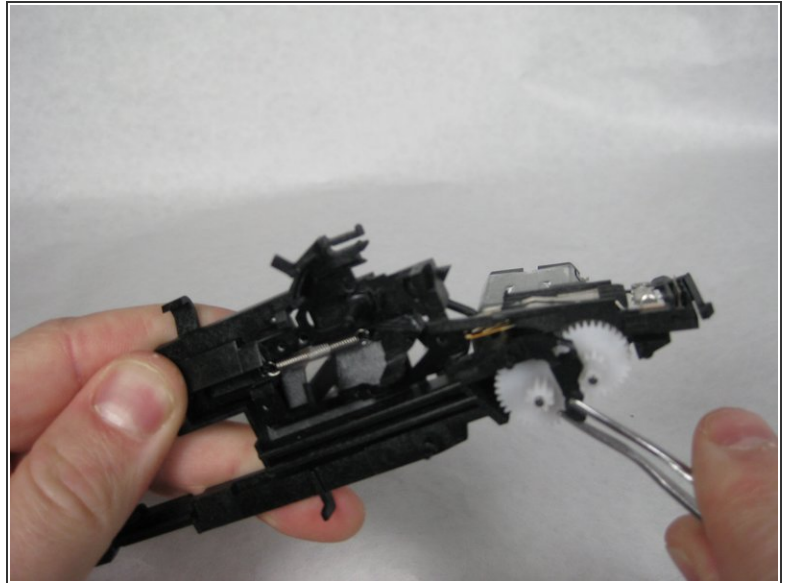
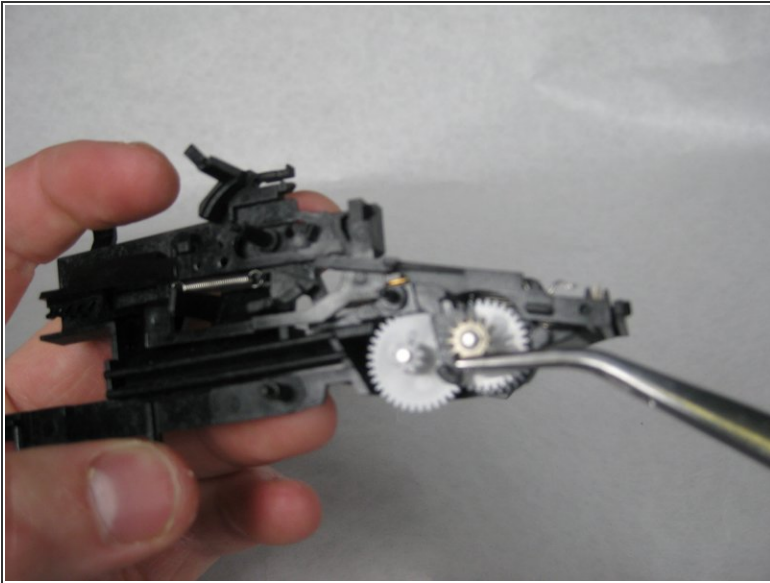
- Remove the spring attached to the film eject metal slide.
- Remove the film eject metal slide

Step 25



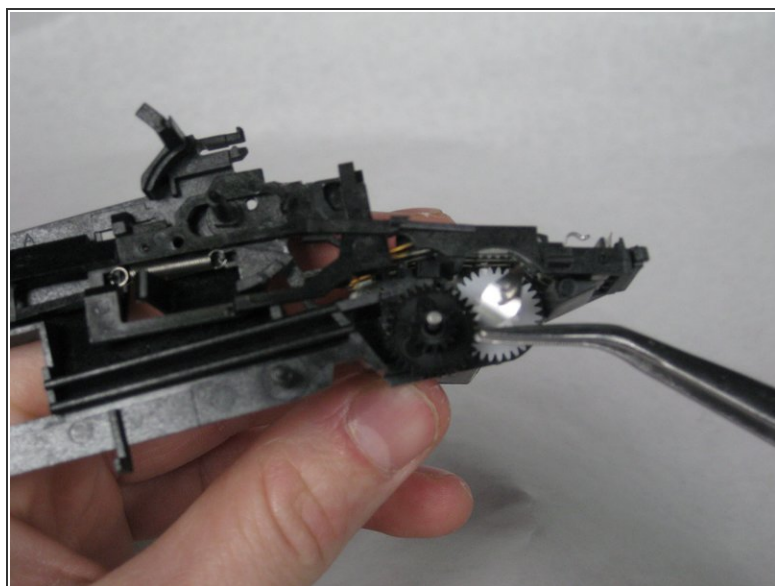
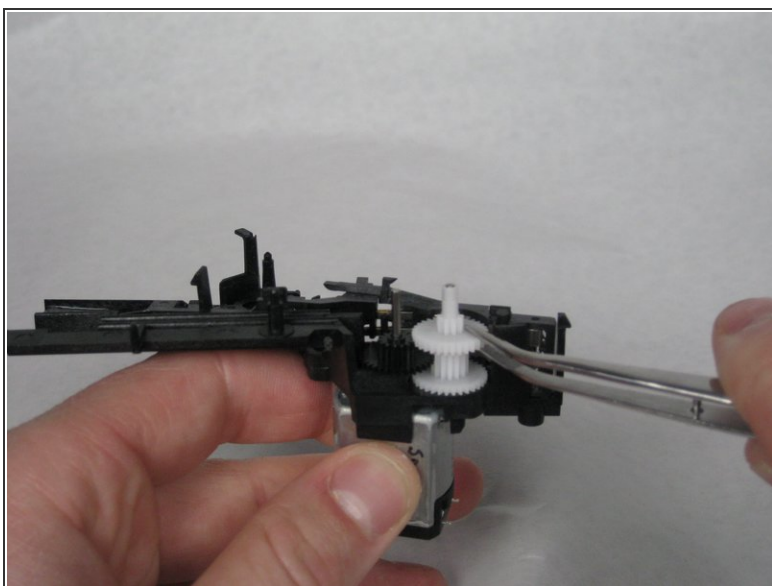
- Remove the plastic extension by pulling it from the slot in the rear of the camera.

Step 26



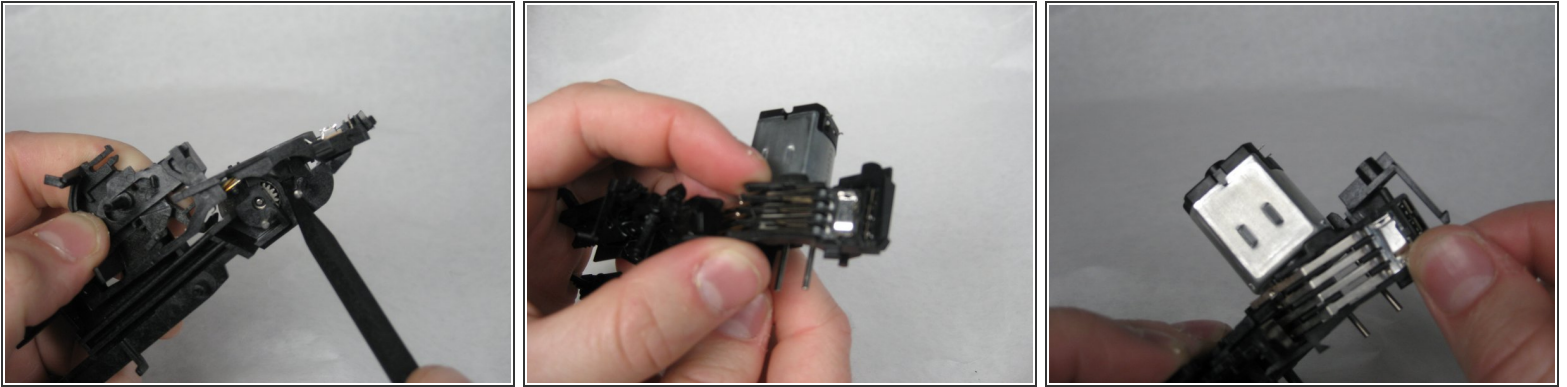
- Remove the metal gear from the gear set.
- Pull the "L" shaped black plastic piece off of its pin.

Step 27



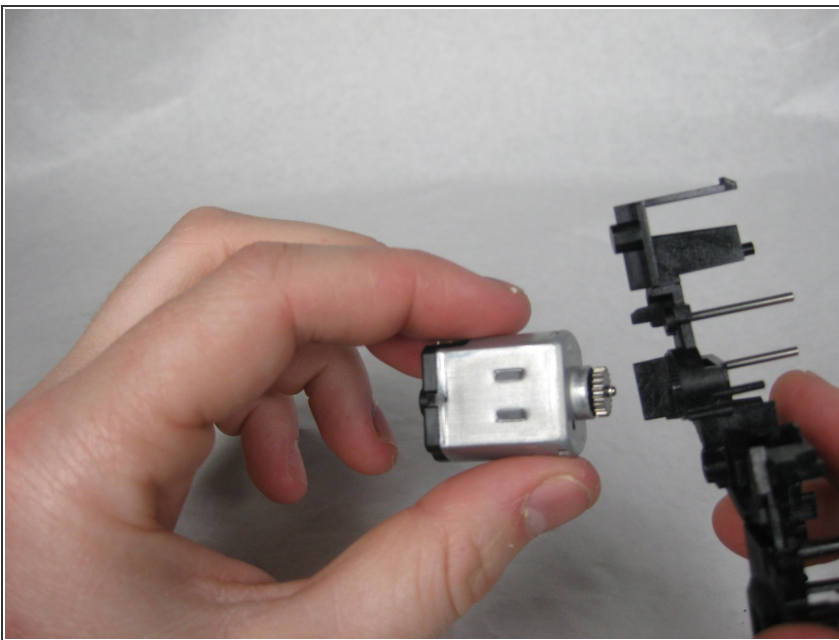
- There are four gears to remove.
- The gear on the left goes first, followed by the the right.
- The right gear has a small leaf spring between it and the gear below it.
- Then remove the black gear and then the last white gear.

Step 28



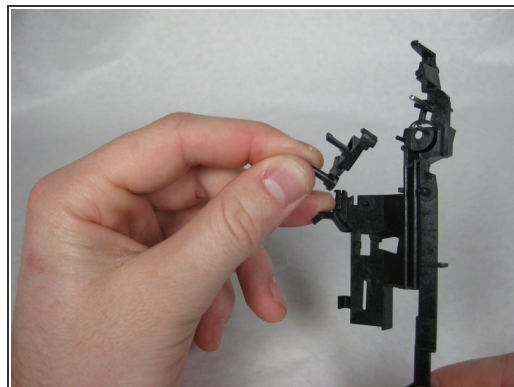
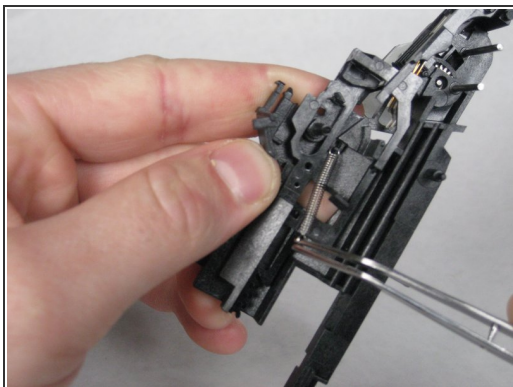
- Using the pointed end of the spudger, press the clip that is beneath all the gears next to the electric motor gear.
- Lift the plastic box containing several long metal tabs
- Then slide the box out.

Step 29



- Pull the electric motor straight out of the plastic piece.

Step 30



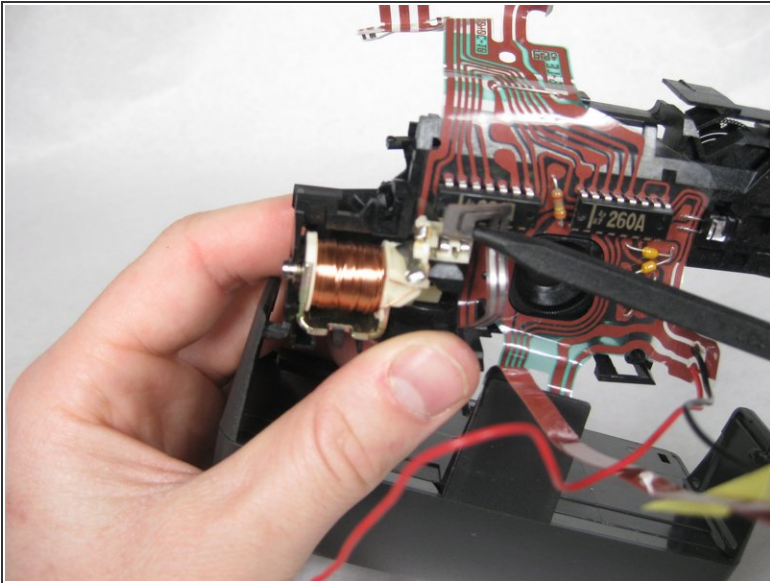
- Remove the spring located in the middle of the plastic mechanism.
- Remove the two loose plastic pieces.

Step 31



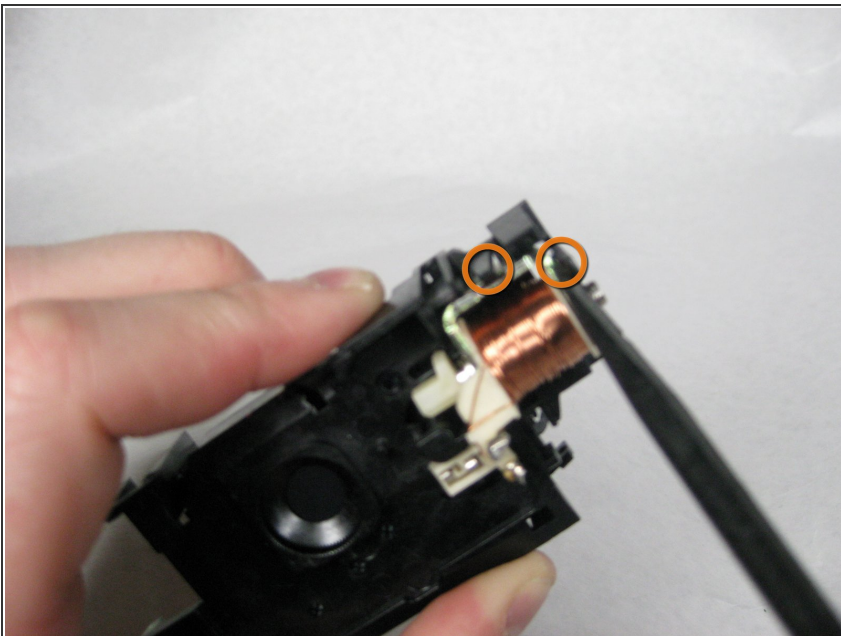
- To remove the metal frame, press the two tabs with the spudger and slide it forward.

Step 32



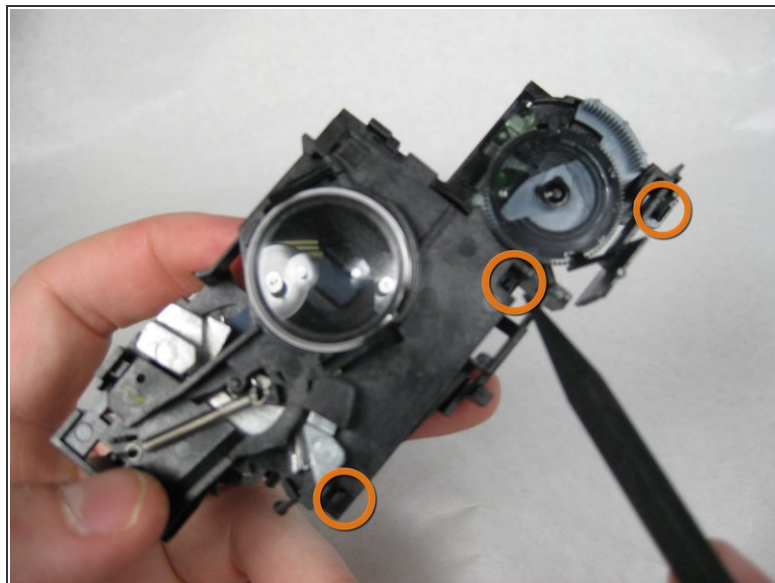
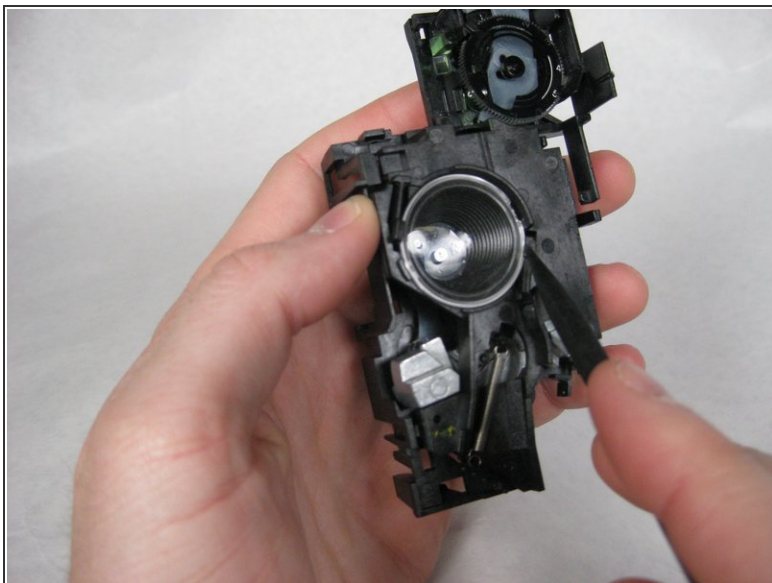
- With the point of the spudger, remove the band wire from the solenoid.
- Remove the small LED from its clip, and then lift the flat wire array and the flash compartment away from the back of the lens plate.

Step 33



- Remove the solenoid from the back of the lens plate by removing the two tabs.

Step 34



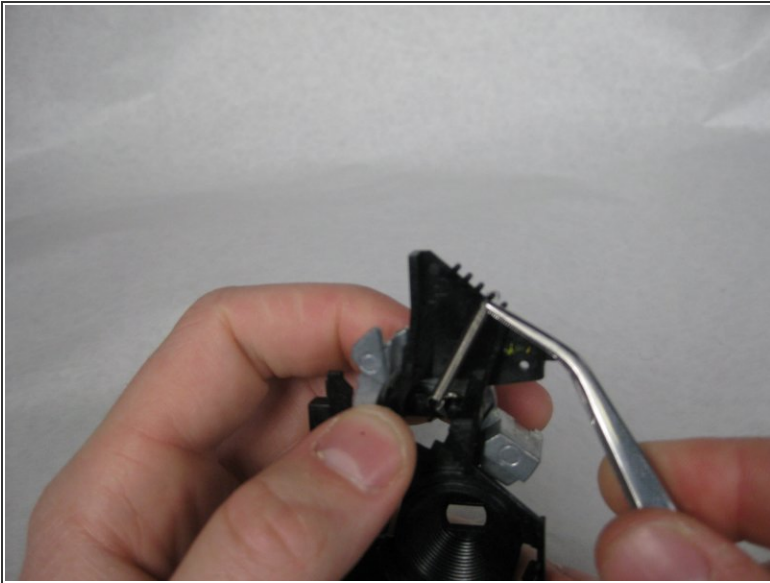
- Remove the lens by pressing the tab.

⚠ CAUTION: The lens may pop out when the tab is released.

- Remove the back of the lens plate by unhooking the three clips that hold it together.

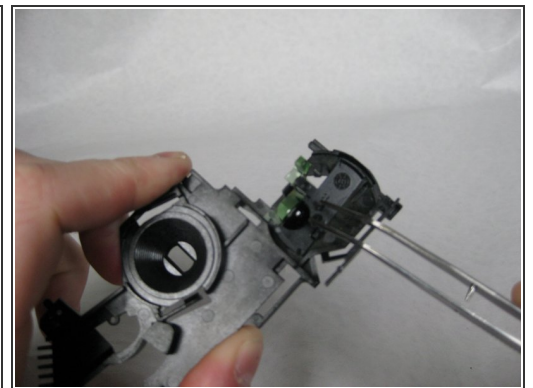
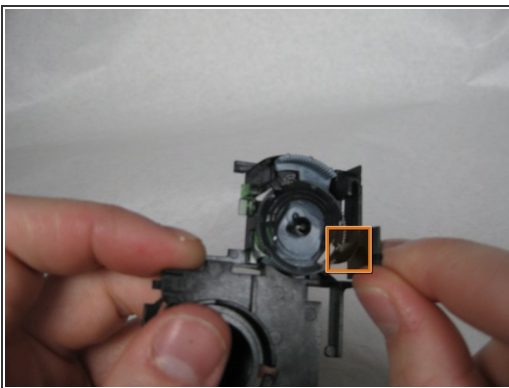
⚠ CAUTION: The Shutter leaves may fall out during this step.

Step 35



- Remove the spring on the plastic bridge that attaches to the shutter mechanism
- Remove the Shutter mechanism from the back of the lens plate.

Step 36



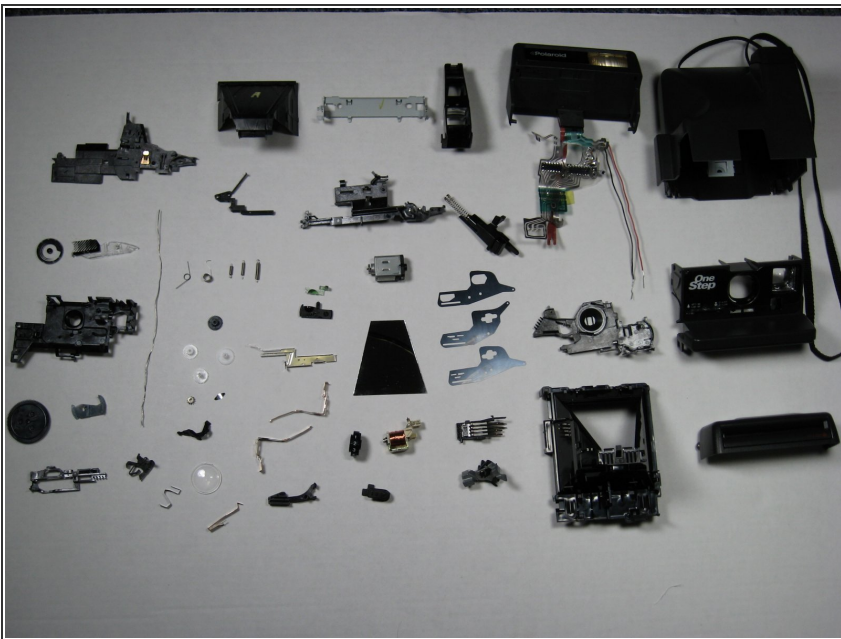
- Remove the Clear dial by unhooking the tab at the bottom of the dial
- Lift the light blue piece out of the mechanism.
- Lift the black piece out of the plastic plate.

Step 37



- Remove the clear green prism from the plastic plate.

Step 38



- The disassembled camera.

To reassemble your device, follow these instructions in reverse order.