



Polaroid OneStep 2 Lens Replacement

Replace the lens in order to capture the photo. You will need to follow the precursor guide of the Shutter Button Replacement steps 1-4.

Written By: Abby Boucher



INTRODUCTION

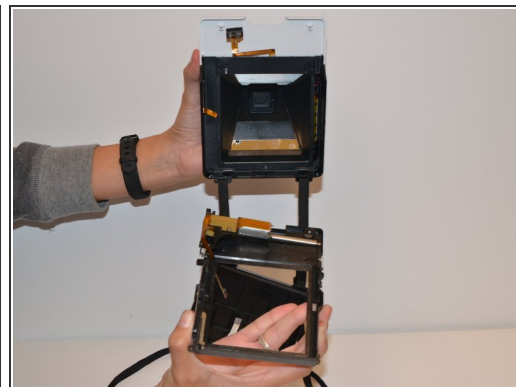
If you need to replace the lens this is guide will allow you to do so. You may need to replace the lens if it becomes scratched or cracked. For this replacement guide you will need to use the Shutter Switch replacement guide steps 1-4 as a precursor guide.



TOOLS:

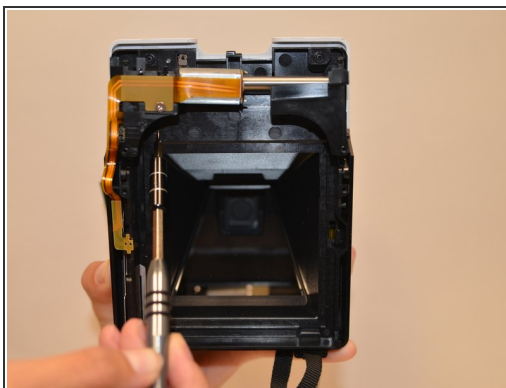
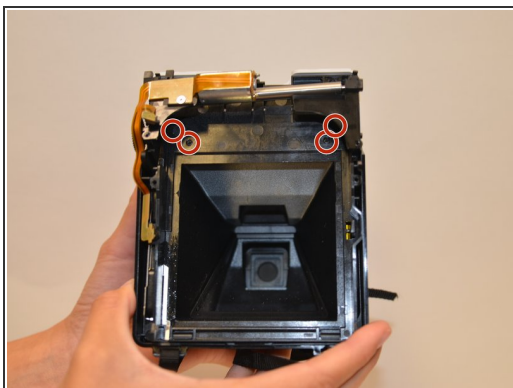
- [Phillips #0 Screwdriver](#) (1)
 - [Tweezers](#) (1)
-

Step 1 — Lens



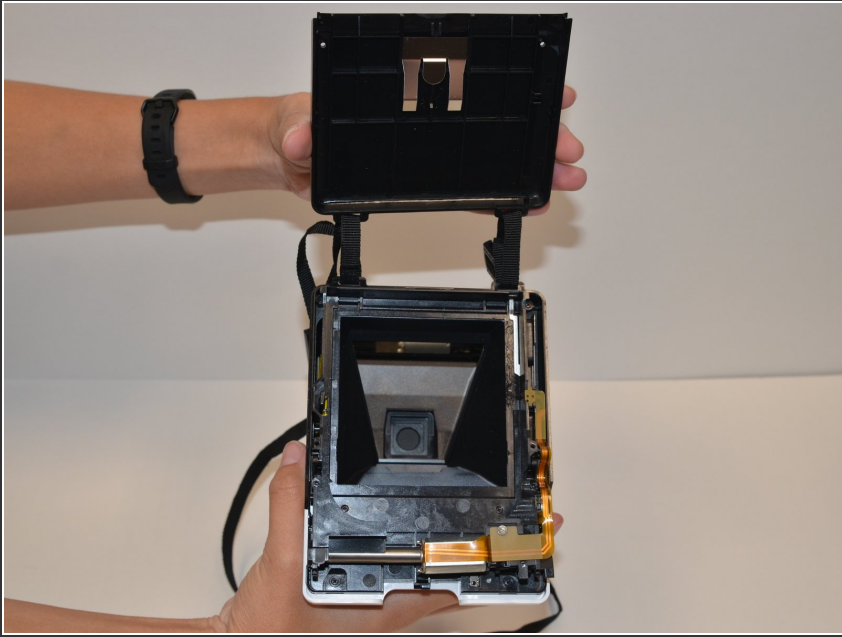
- Unscrew the four Phillips #0 5 mm screws on the base of the camera.
- Remove the two pieces of the base.

Step 2



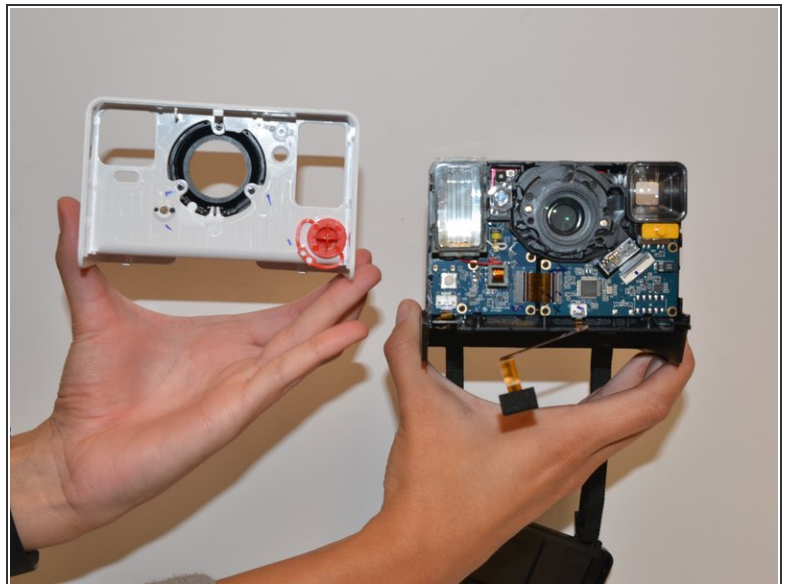
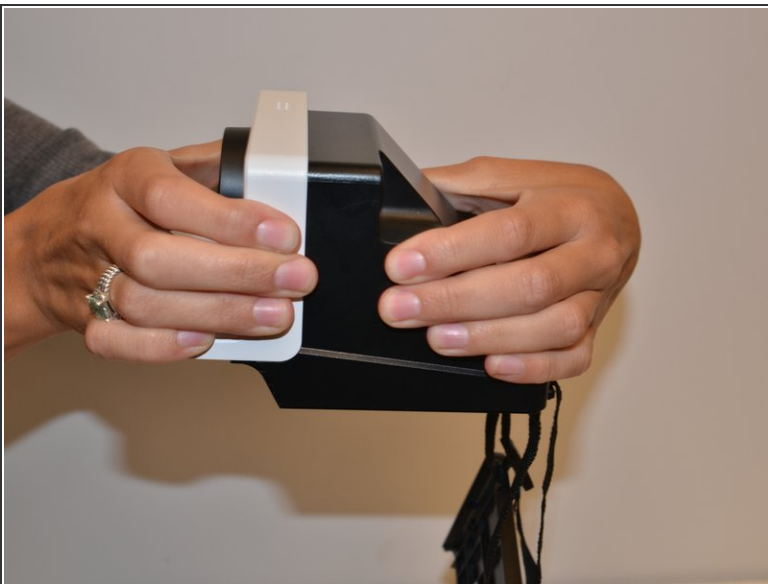
- Remove the four Phillips #0 5mm screws on the top of the inside base piece.
- Remove the Phillips #0 5mm two screws on the bottom of the inside base piece nearer the strap.

Step 3



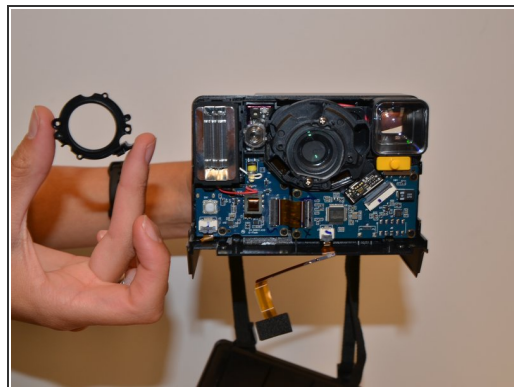
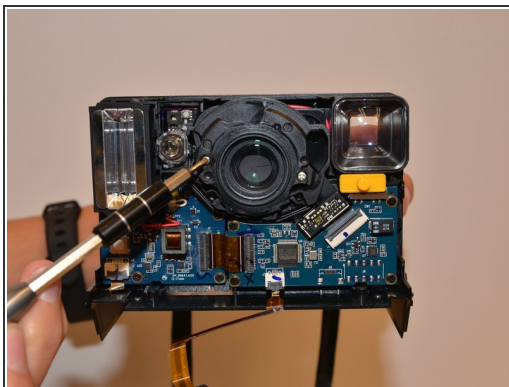
- Remove the black inside base piece.

Step 4



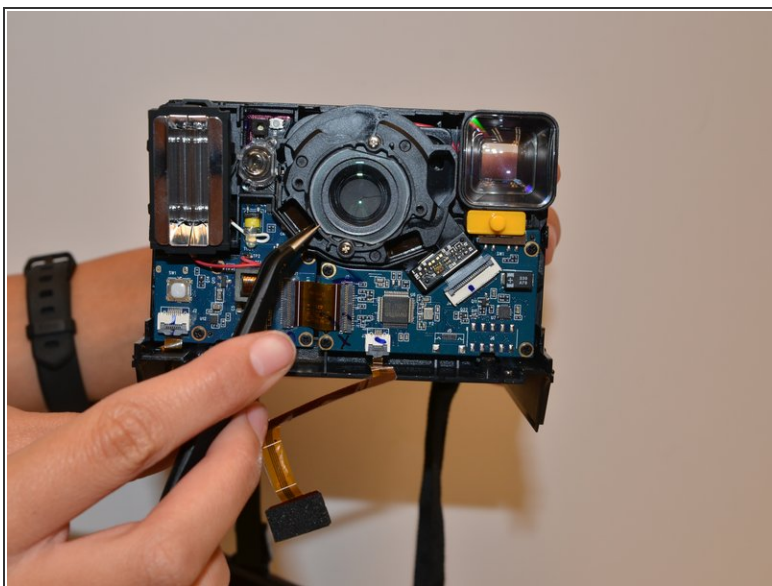
- With force separate the white front piece from the back of the camera. You will use your hands and pull it apart.

Step 5



- Remove the two Phillips #0 3mm screws on the black ring holding the lens in place and remove the ring.

Step 6



- Remove the clear plastic lens with tweezers.

To reassemble your device, follow these instructions in reverse order.