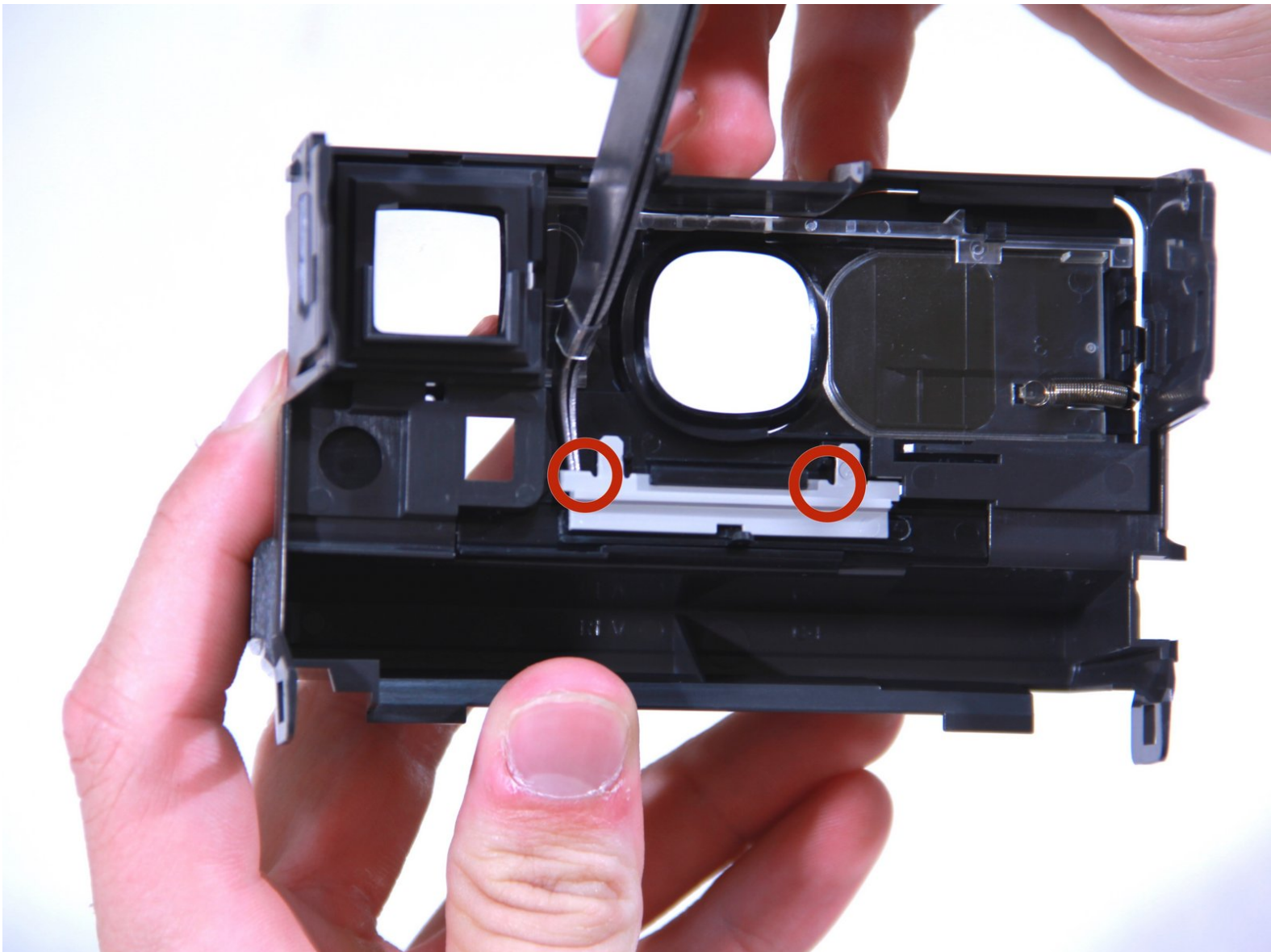




Polaroid Onestep Close Up Close Up Lens Replacement

This guide will show you how to replace the unique lens that allows this camera to focus on objects close up, and is the camera's namesake.

Written By: Jordan



INTRODUCTION

In this guide, the user will be instructed in removing the special feature of this camera, the close up lens.



TOOLS:

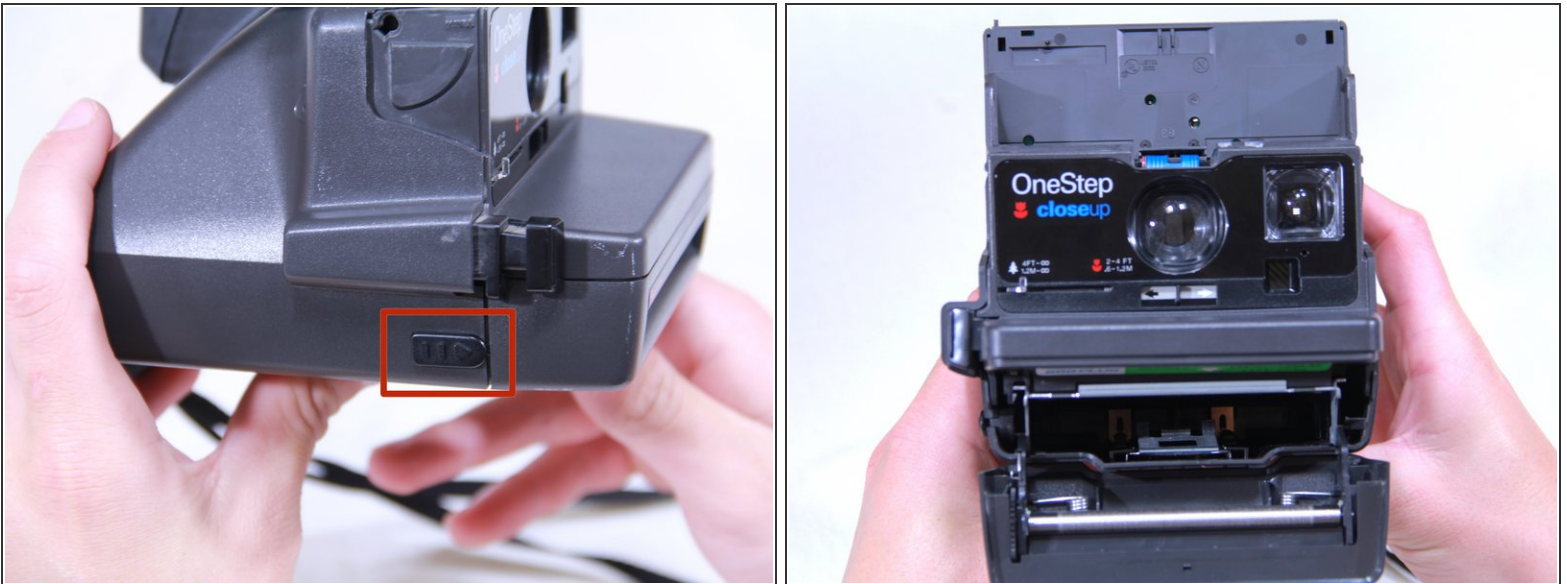
- [iFixit Opening Tools](#) (1)
 - [Tweezers](#) (1)
-

Step 1 — Flash Assembly Removal



- Begin by opening the top of the camera (flash assembly) to a slight angle.
 - Next, angle the flash assembly slightly upward and pry off the connections carefully.
- ⚠ Be careful not to damage the ribbon cable. This is essential to the operation of the flash.

Step 2 — Opening Film Tray



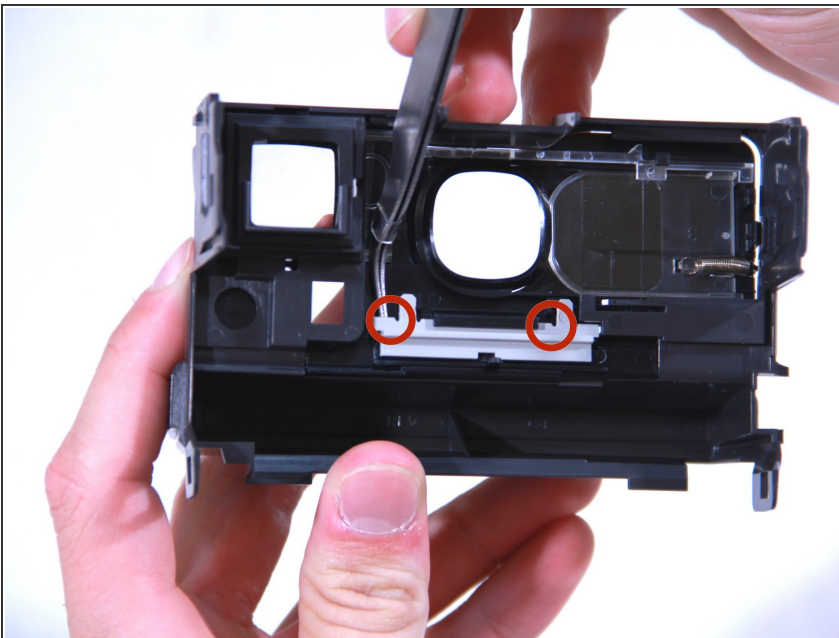
- Slide the action button, on the bottom of the camera, to open the bottom.

Step 3 — Removing Face Plate



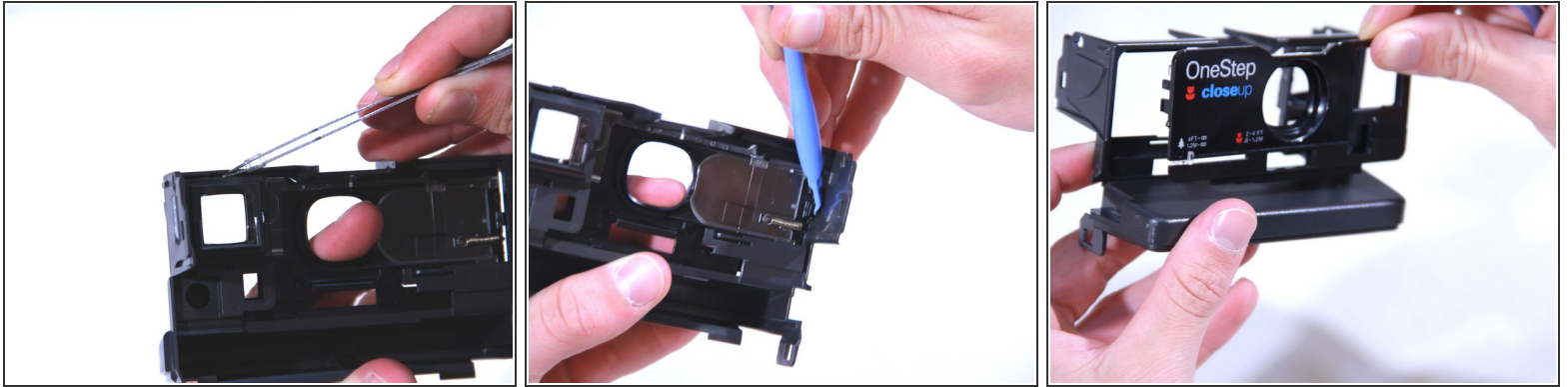
- Insert the blue plastic opening tool between the rear case and the plastic tabs directly under the shelf, and pry it loose.
- Pull off the face plate.

Step 4 — Removing the slider



- Pry off the slider (the light gray piece) by slipping it out from beneath the tabs (their location is indicated by the two red circles).

Step 5 — Removing the Face Plate



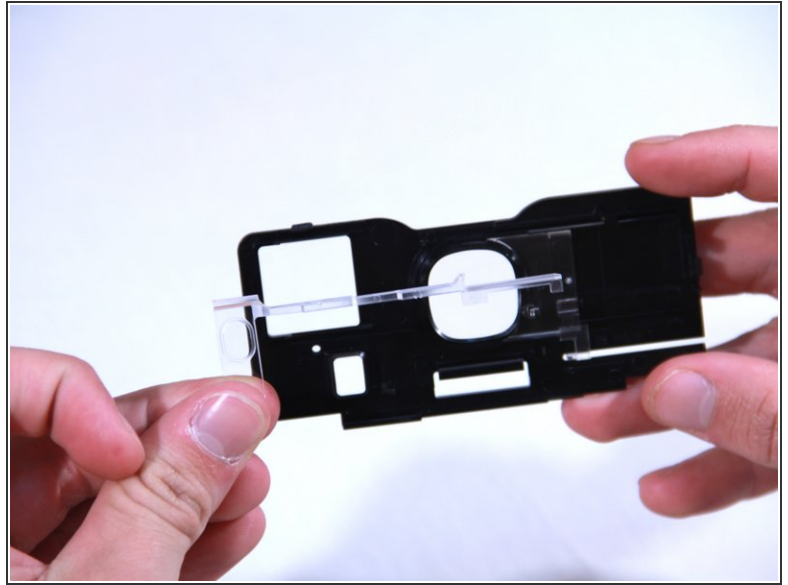
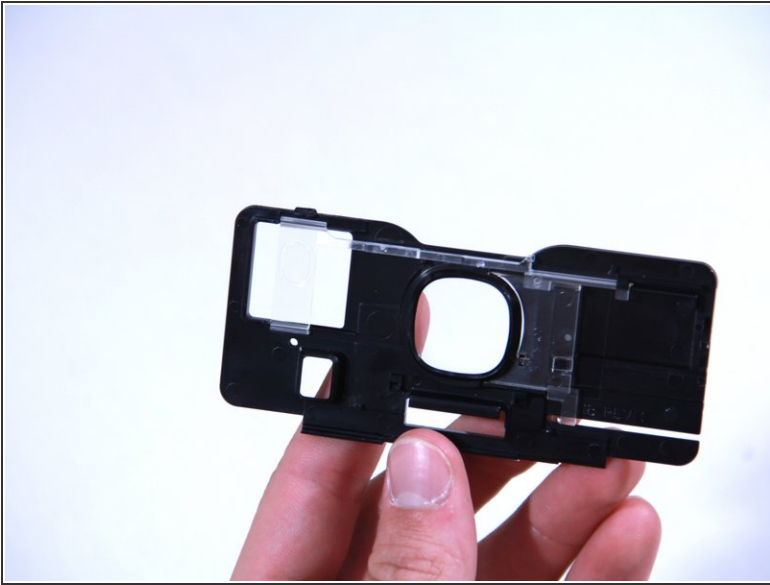
- Pry off the face plate at the locations shown by using a rigid prying tool (either tweezers or the blue plastic opening tool). These spaces can be very tight.
- You'll know if you were successful if you can fully remove the face plate.

Step 6 — Removing the Spring



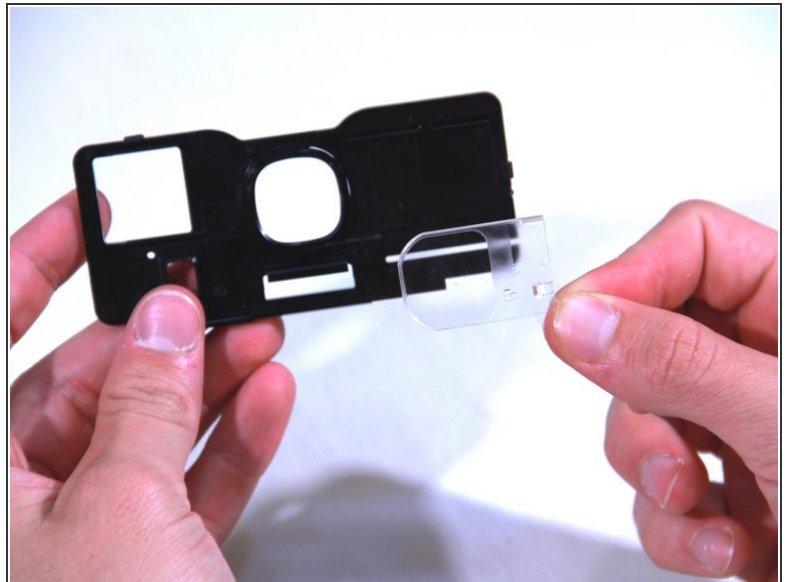
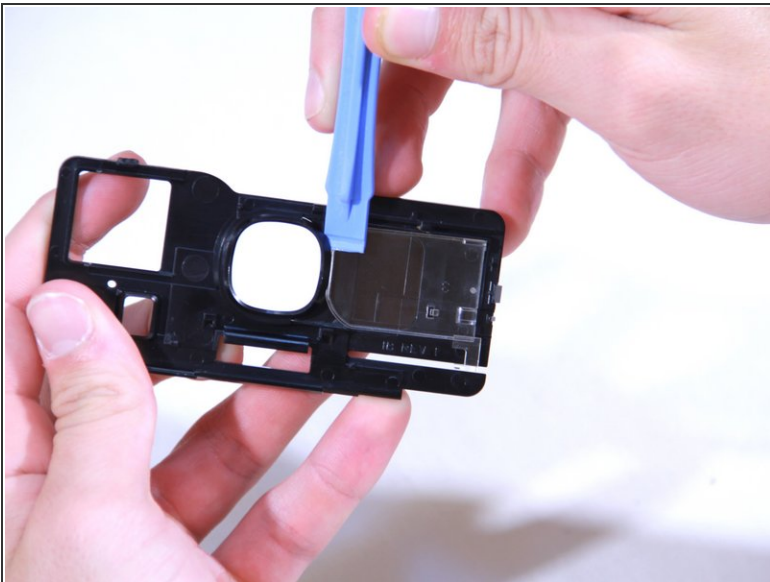
- Use tweezers to lift the ring of the spring off of the hook it is attached to.
- Gently loosen and remove the spring.

Step 7 — Removing the First Part of the Close Up Lens



- Slide the CloseUp lens piece all the way to the left. It should separate without any resistance.

Step 8 — Removing the Second Part of the Close Up Lens



- Make sure the last plastic piece is set all the way to the right. Using the blue plastic tool, pry it loose. It should easily pop out.

To reassemble your device, follow these instructions in reverse order.