



# Polaroid Onestep Close Up Face Plate Replacement

Prerequisite only

Written By: Tyler OBrien



---

## INTRODUCTION

This guide will show how to remove the face plate, which is necessary to exposing the internal components.



### TOOLS:

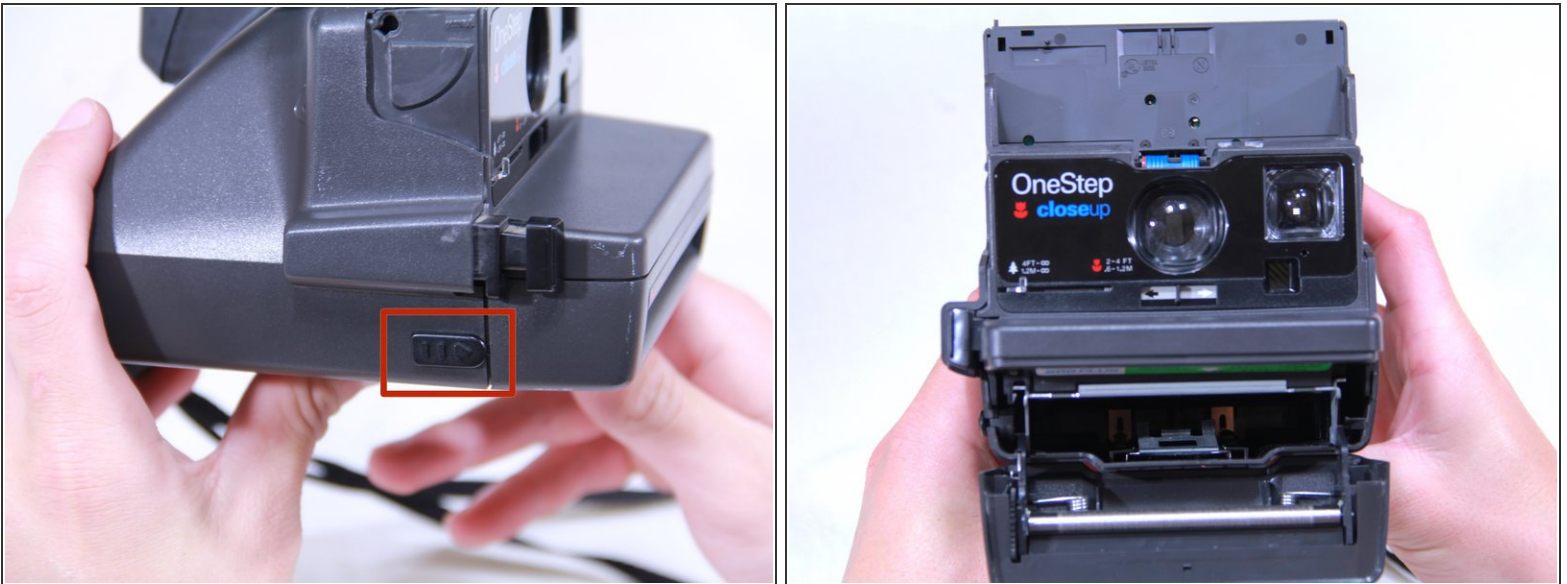
- [iFixit Opening Tools](#) (1)
-

## Step 1 — Flash Assembly Removal



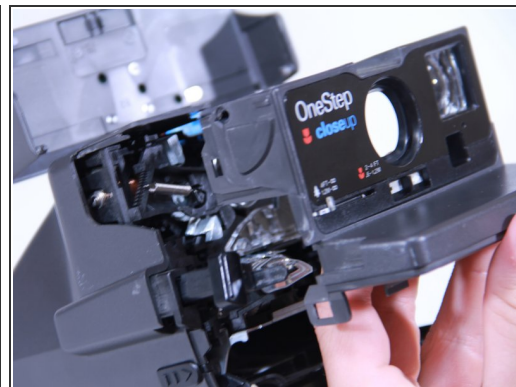
- Begin by opening the top of the camera (flash assembly) to a slight angle.
  - Next, angle the flash assembly slightly upward and pry off the connections carefully.
- ⚠ Be careful not to damage the ribbon cable. This is essential to the operation of the flash.

## Step 2 — Opening Film Tray



- Slide the action button, on the bottom of the camera, to open the bottom.

### Step 3 — Removing Face Plate



- Insert the blue plastic opening tool between the rear case and the plastic tabs directly under the shelf, and pry it loose.
- Pull off the face plate.

To reassemble your device, follow these instructions in reverse order.