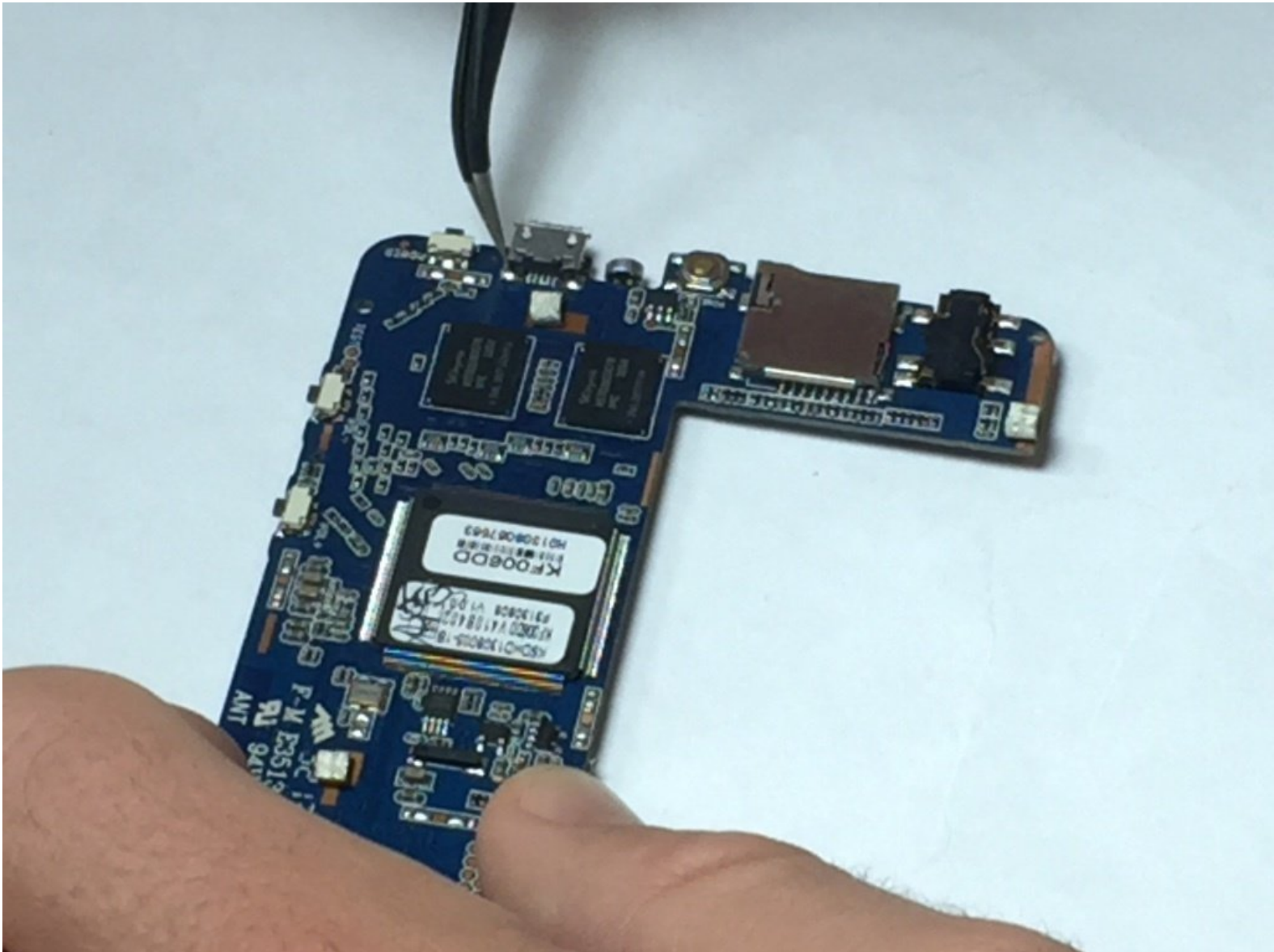




Polaroid PMID4312 Charging Port Replacement

This guide will show you how to replace the charging port.

Written By: Christopher Bertan



INTRODUCTION

Charging port is very important for every device. If you don't fix it on time, the device won't turn on anymore.



TOOLS:

- [Plastic Cards](#) (1)
 - [Phillips #00 Screwdriver](#) (1)
 - [Tweezers](#) (1)
 - [Soldering Iron](#) (1)
 - [iFixit Opening Tools](#) (1)
-

Step 1 — Battery



- Pry the seam between the screen and the case and slide it on all four sides with a large plastic opening tool until the plastic case comes off.

Step 2



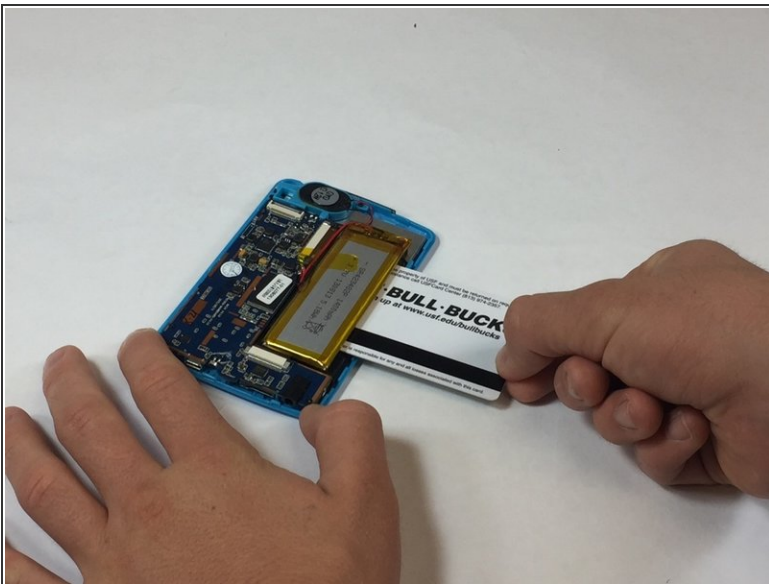
- Lift the device off of the case and flip over the device so that it sits screen side down.

Step 3



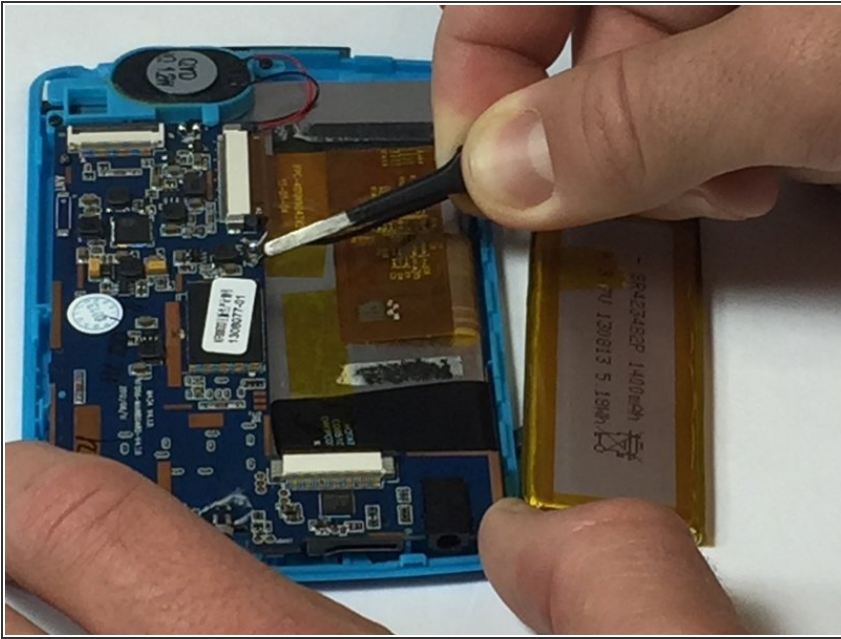
- The device is now free from the plastic case.

Step 4



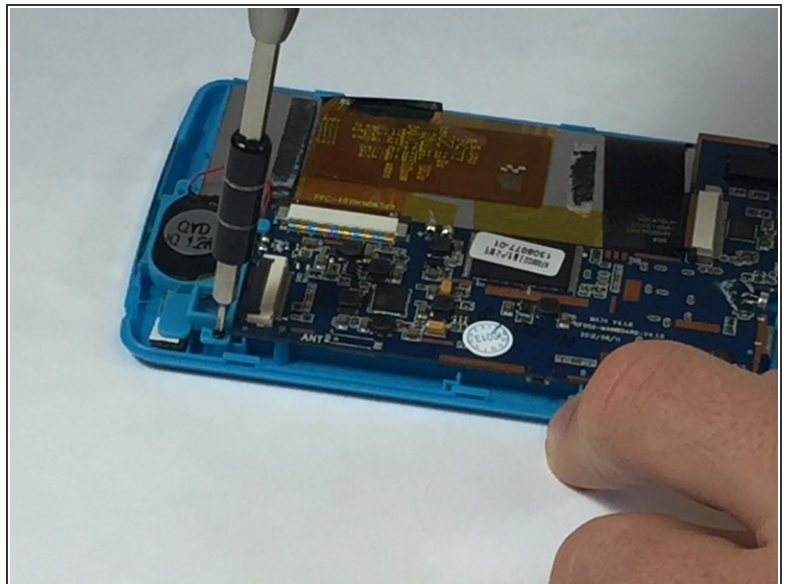
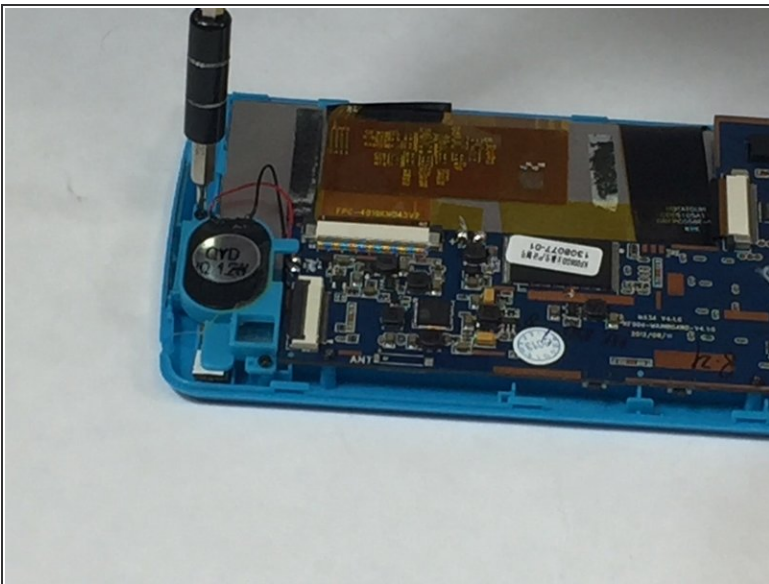
- Wedge a plastic card beneath the battery unit and wiggle the card side to side and up and down gently until the glue sealing the battery to the device is broken.

Step 5



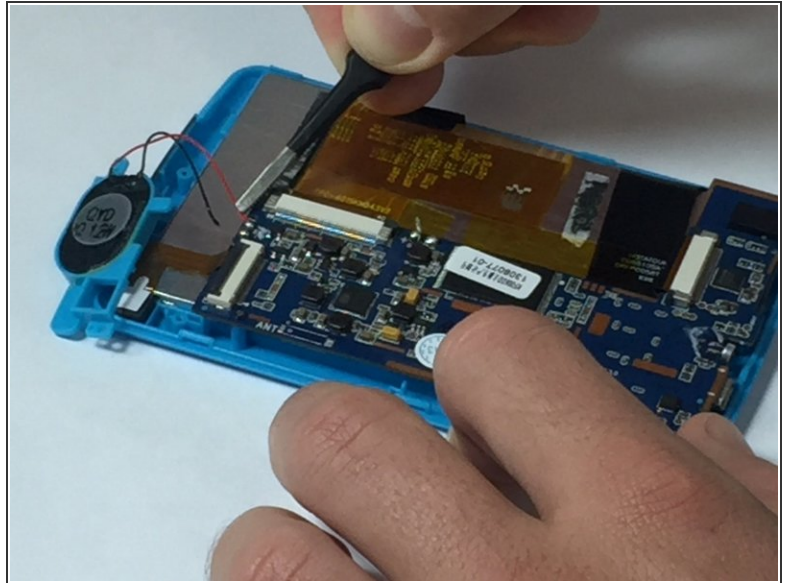
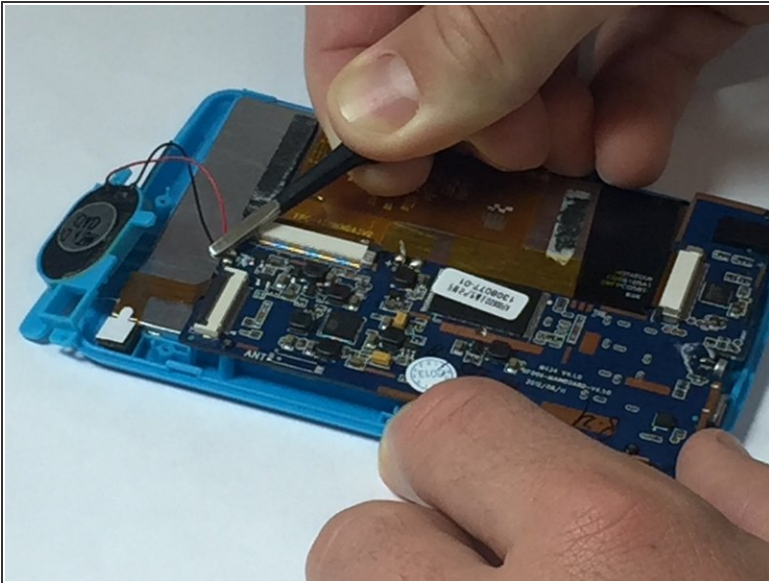
- Peel back any yellow tape not directly attached to the battery.
- Using a soldering iron, desolder the two wires that connect the battery to the motherboard.

Step 6 — Speaker



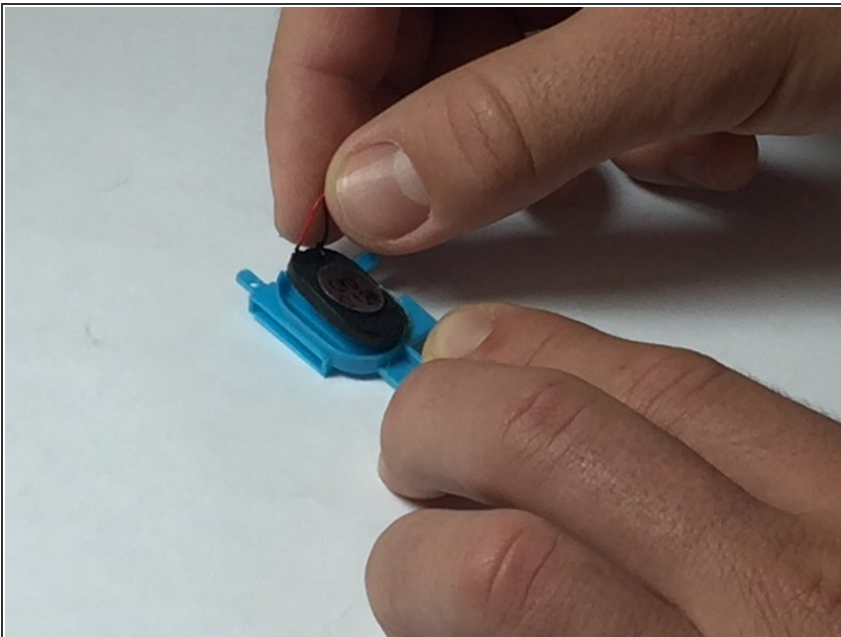
- Remove the two 5mm screws attached to the top right and bottom left corners of the speaker

Step 7



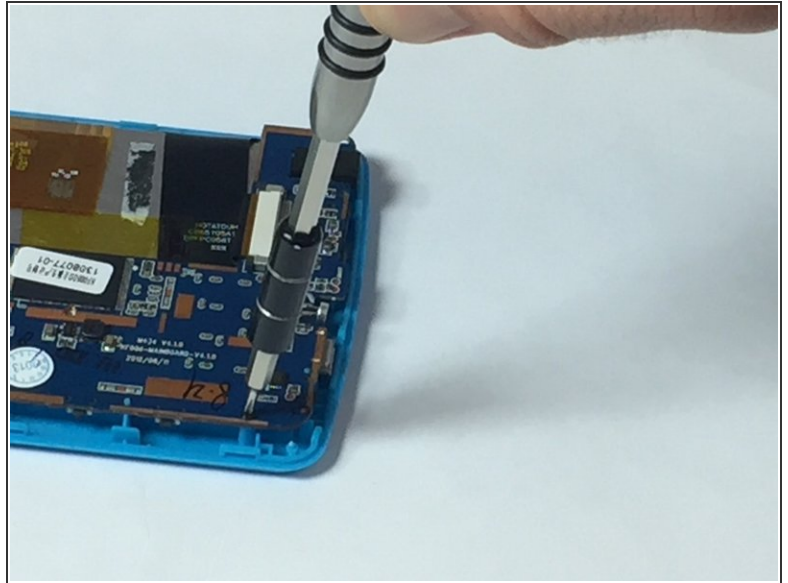
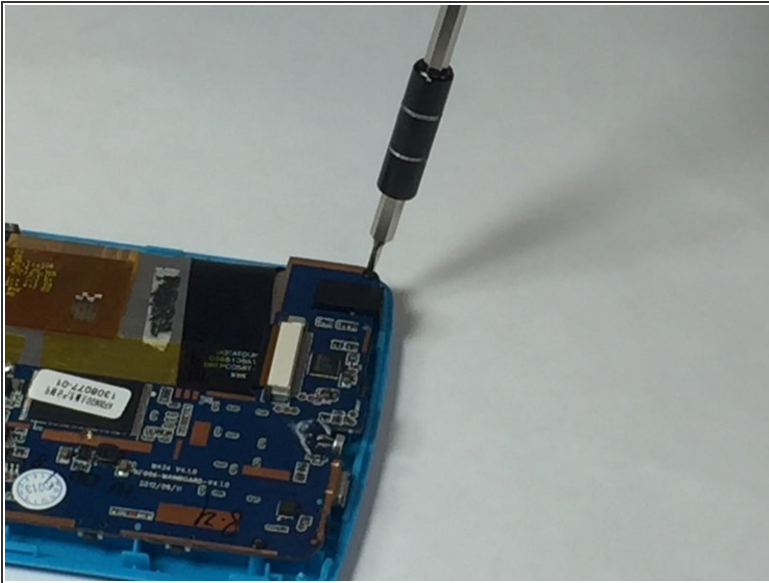
- Solder off the wires connecting the speaker to the device

Step 8



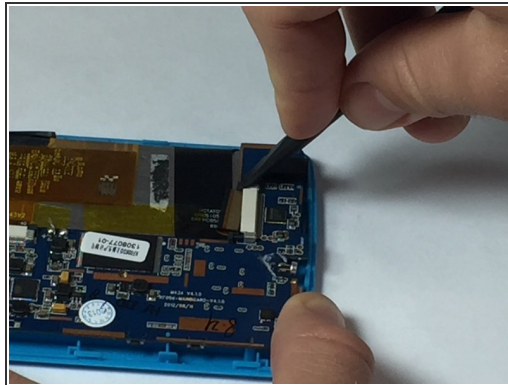
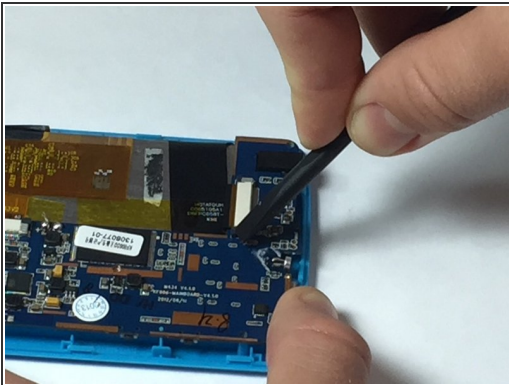
- Pull the speaker out of the casing to release it.

Step 9 — Motherboard





- Using the ph#00 screwdriver, remove the four 5mm screws connecting the motherboard to the casing.

Step 10

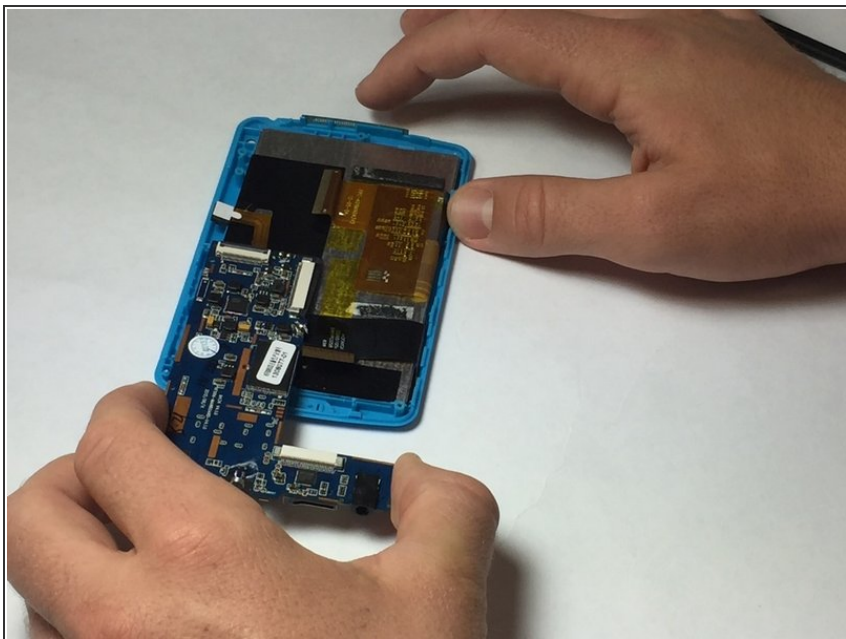


- Using a spudger or a fingernail, detach the two ribbons from the motherboard by pushing the plastic tab away from the Zero Insertion Force connectors.

 As the name implies, no force is needed to plug in or remove the cable.

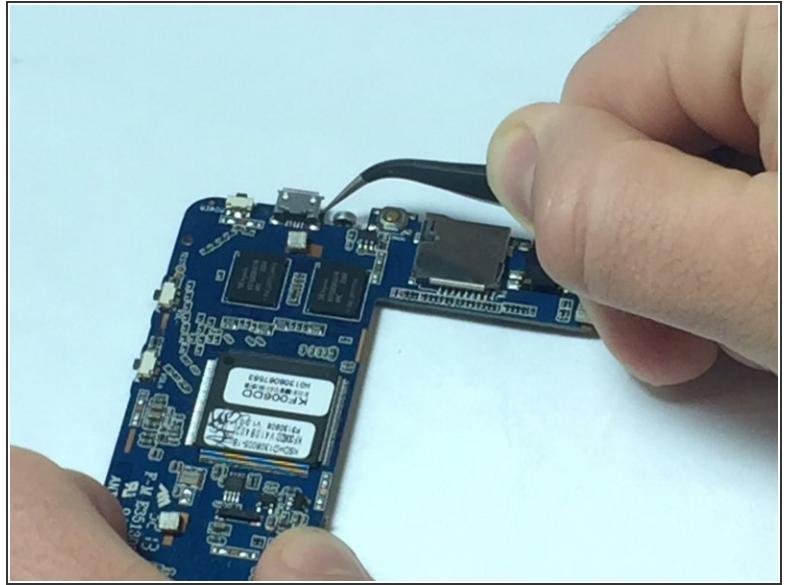
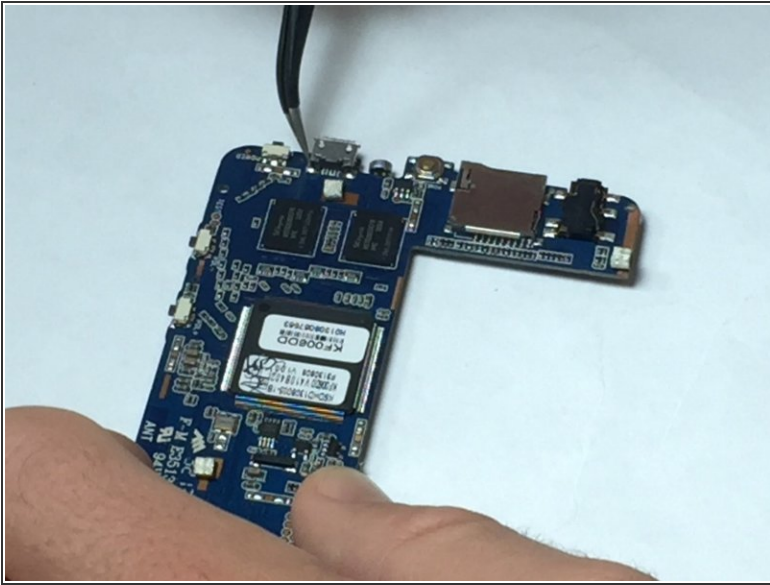
 Be sure you are prying the plastic tabs connected tab and not the connector itself.

Step 11



- Now carefully remove the motherboard.

Step 12 — Charging port



- Desolder each side of the USB port where it is attached to the motherboard.
- The USB port will now be loosened from the motherboard.
- Using tweezers, pull the USB port straight out from the motherboard without wiggling it up, down, or side to side.
- The USB port is now replaceable.

To reassemble your device, follow these instructions in reverse order.