



Polaroid PMID4312 Digitizer Teardown

This guide will demonstrate how to disassemble a Polaroid PMID4312 and remove the digitizer.

Written By: Ryan



INTRODUCTION

The digitizer is glued to the screen and heat gun is recommended to separate the two parts properly.



TOOLS:

- [iFixit Opening Tools](#) (1)
 - [Tweezers](#) (1)
 - [Phillips #00 Screwdriver](#) (1)
 - [Soldering Iron](#) (1)
 - [Heat Gun](#) (1)
 - [Plastic Cards](#) (1)
-

Step 1 — Digitizer



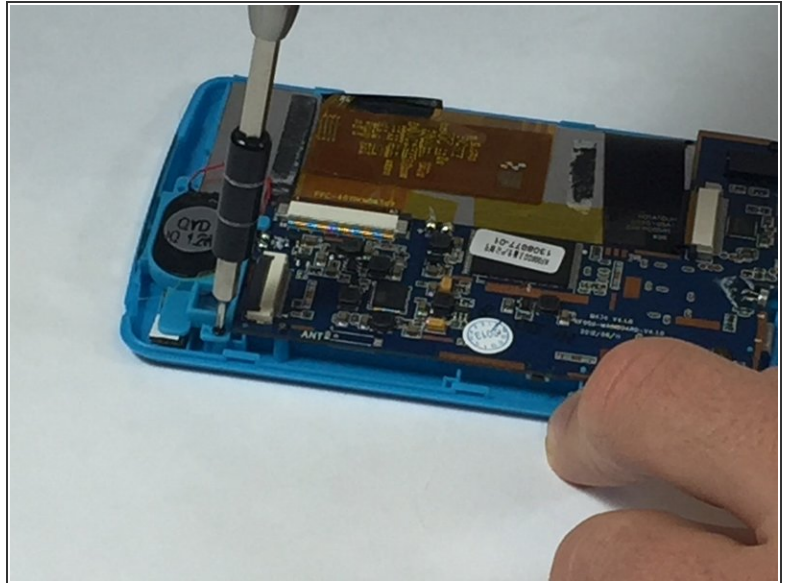
- Insert the plastic opening tool into the groove between the two halves of the cover. Pry the two halves apart working your way around the perimeter of the case.

Step 2



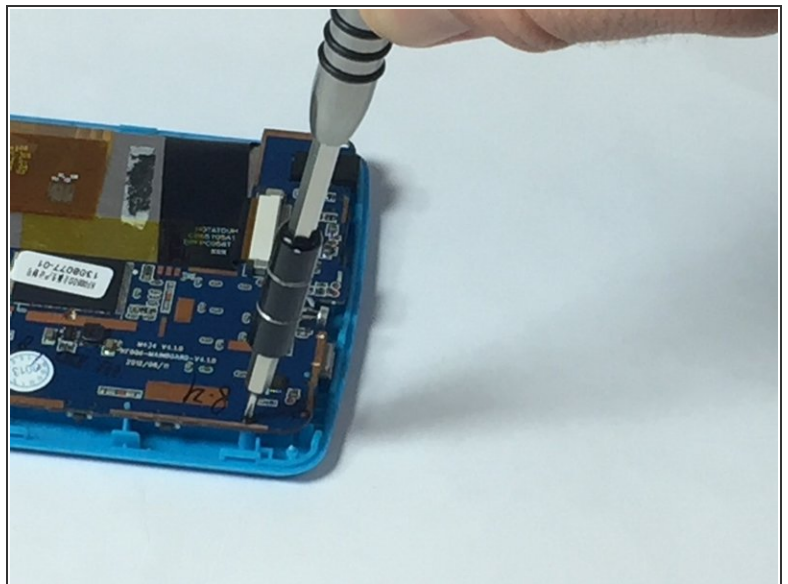
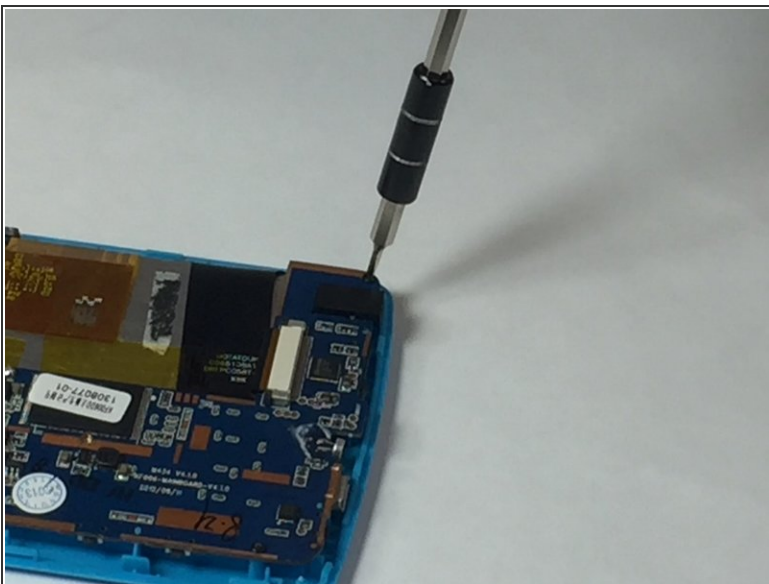
- Pry the battery from the casing by sliding an ID or credit card underneath and applying some force.
- Peel back any yellow tape not directly attached to the battery.
- Using a soldering iron, desolder the two wires that connect the battery to the motherboard.

Step 3



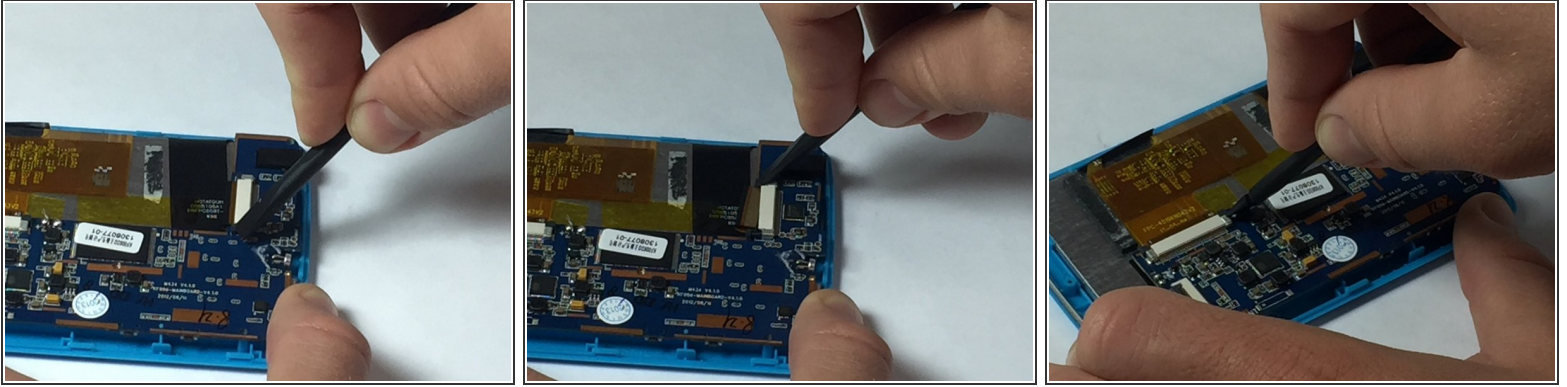
- With a Phillips head #00 screwdriver, remove the two screws holding down the speaker.

Step 4



- Using the ph#00 screwdriver, remove the four 5mm screws that connect the motherboard to the casing.

Step 5



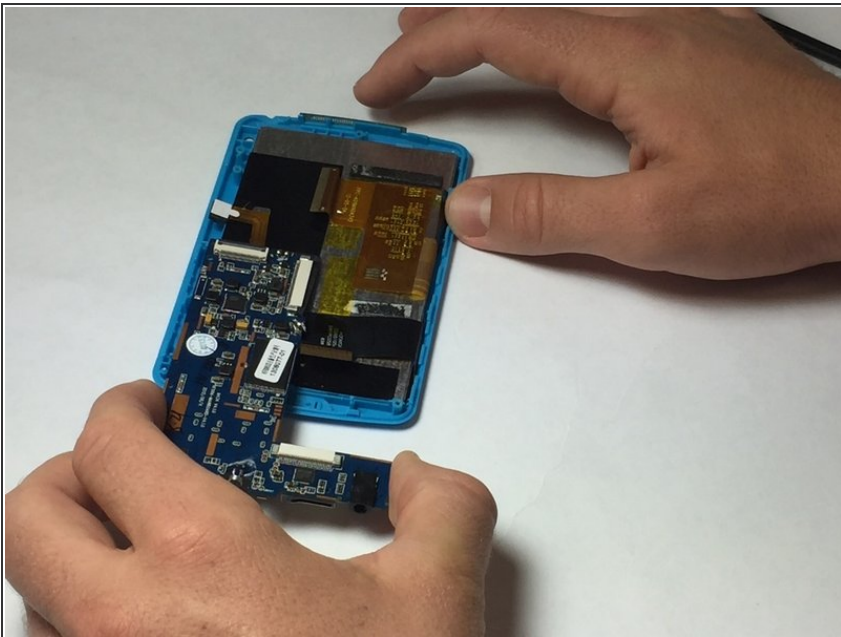
- Using a spudger, detach the two ribbons from the motherboard by pushing the gray plastic tabs away from their white receivers.

⚠ The parts are very delicate, so use minimal force.

- Once the casing is unlocked, remove the two ribbons from the motherboard.

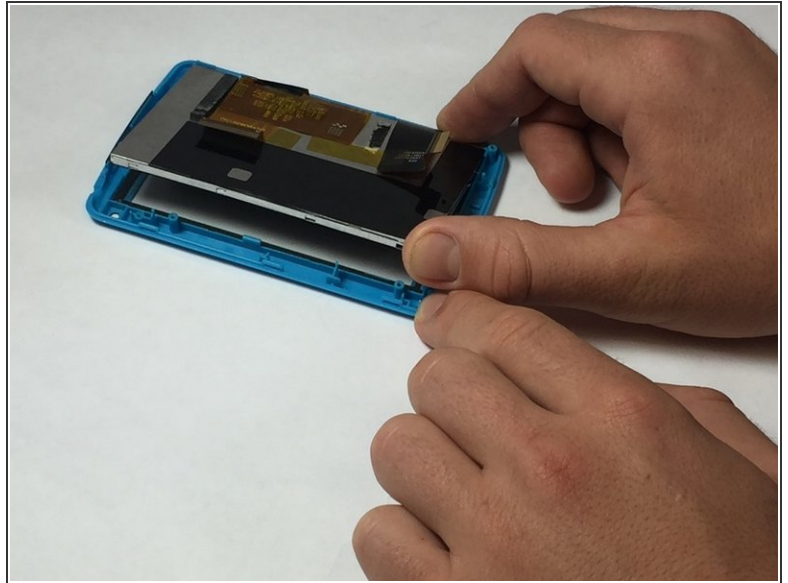
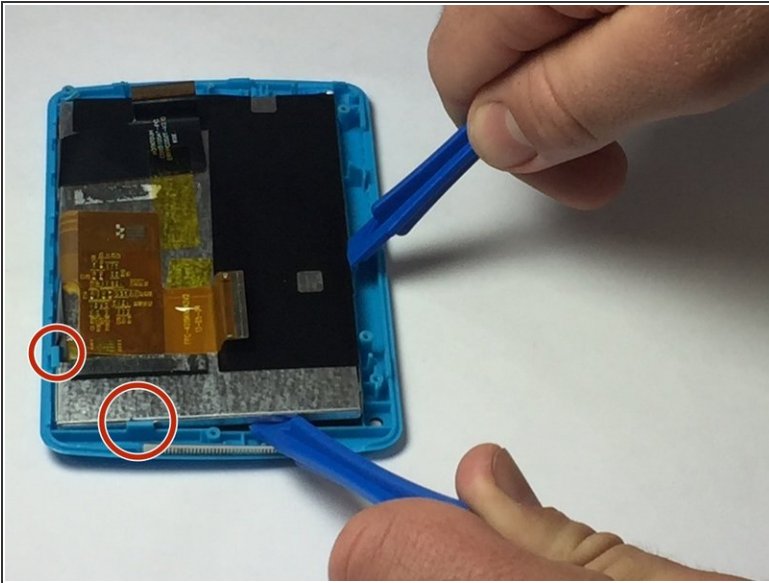
ℹ Tweezers are recommended to pull back the ribbons.

Step 6



- Now remove the motherboard and all of the connected components.

Step 7



- Using a heat gun, apply heat to the front of the screen for 3-5 minutes to release the glue.
- Using a plastic opening tool, pull back on the plastic blue tabs to release the digitizer and pry it back from the screen.
- Remove the black trim the lines perimeter of the screen and is attached to the digitizer.
- ⓘ This step will be very easy if the heat gun that was mentioned previously is used.

To reassemble your device, follow these instructions in reverse order.