



# Polaroid PMID701i 10 Panel Replacement

Prerequisite Only

Written By: Amy Li



---

# INTRODUCTION

Prerequisite Only




## TOOLS:

- [iFixit Opening Tools](#) (1)
  - [Phillips #000 Screwdriver](#) (1)
-

## Step 1 — Panel



 Turn off and unplug the device before starting replacement.

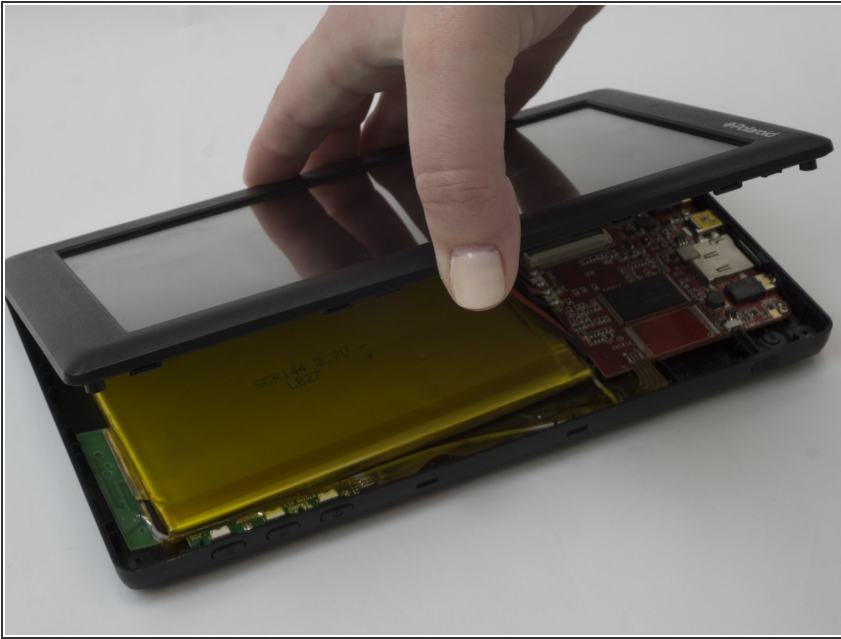
- Flip the device so that the screen faces down, with the back facing up.
-  The back panel attaches to the device with four 4.0mm long screws, one at each corner, indicated by the red circles in the picture.
- Unscrew the four screws with a PH000 screwdriver.

## Step 2



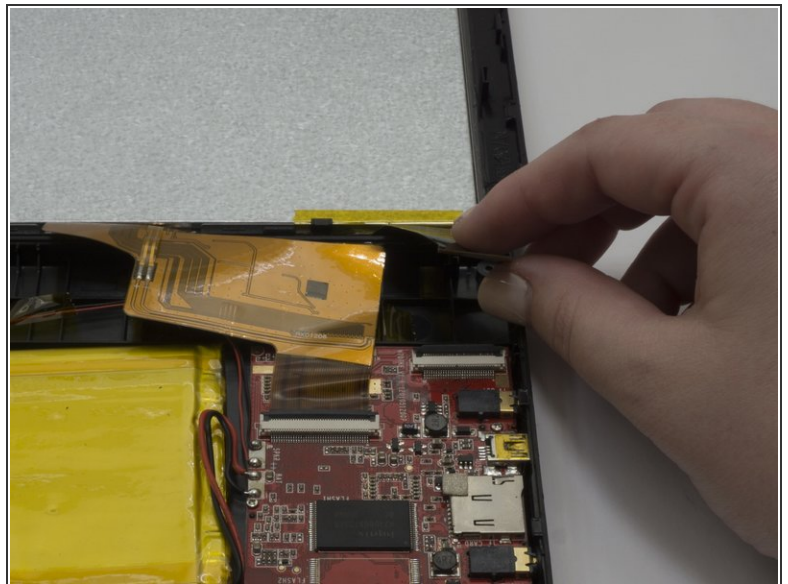
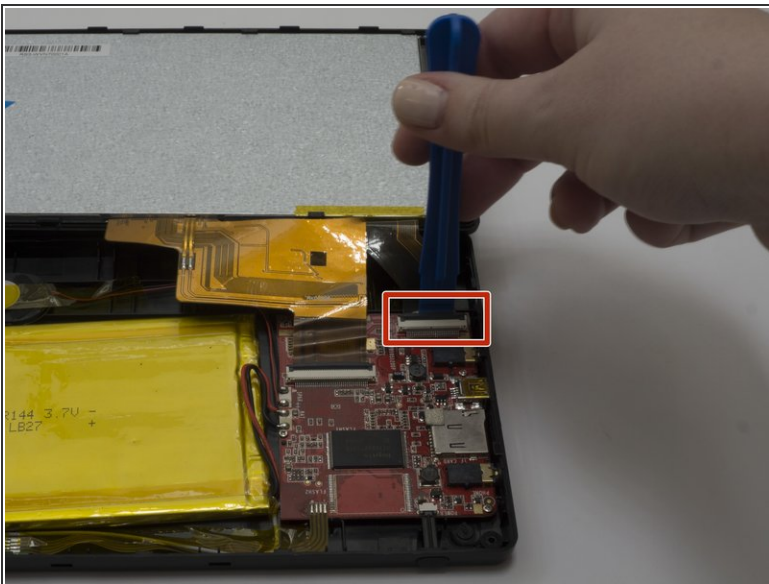
- Flip the device over so that the screen faces up, and the back faces down.
- Separate the front panel using the Opening Tool on a corner to create an opening.
- ⓘ Removing the frame for the first time may take a significant amount of force.
- Run the tool along the seams of the device to open up all the sides.

### Step 3



- ⚠ Removing the panel too quickly may damage the cable that attaches parts between the two panels.
- Gently lift the top panel from the bottom panel.

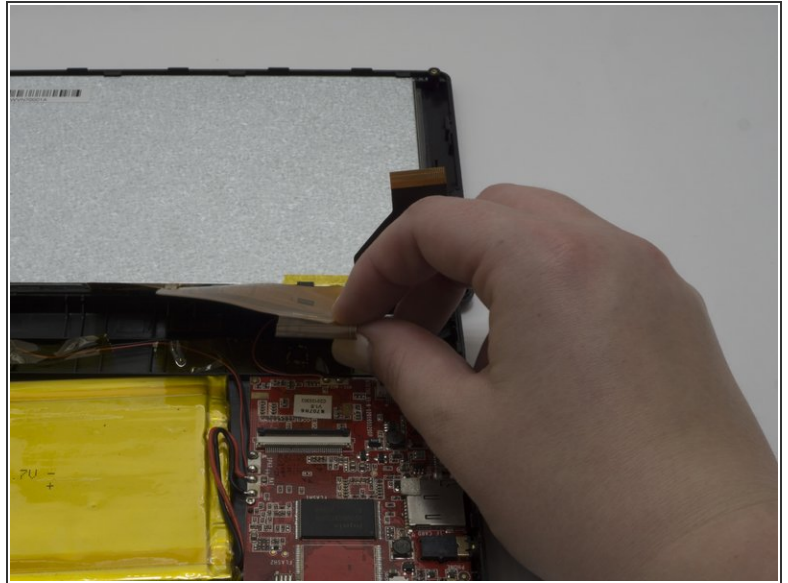
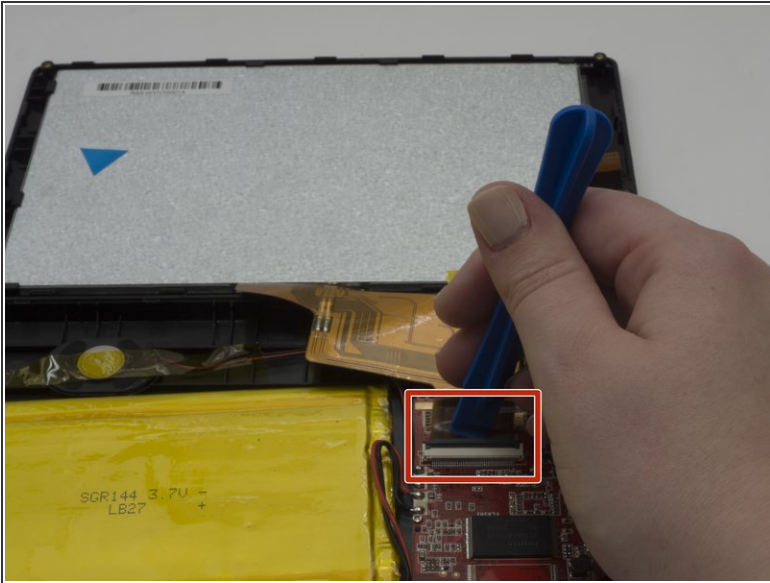
### Step 4



- ⓘ The flexible flat cables (FFC) attach to parts in the bottom panel with zero insertion force (ZIF) connectors.
- Use the Opening tool to flip up the black retaining flap on the smaller connector.
- Gently lift the cable, parallel to the panel, to detach it.

This document was generated on 2019-10-22 06:00:04 AM (MST).

## Step 5



- Use the Opening tool to flip up the black retaining flap on the larger connector.
- Gently lift the cable, parallel to the panel, to detach it.

To reassemble your device, follow these instructions in reverse order.