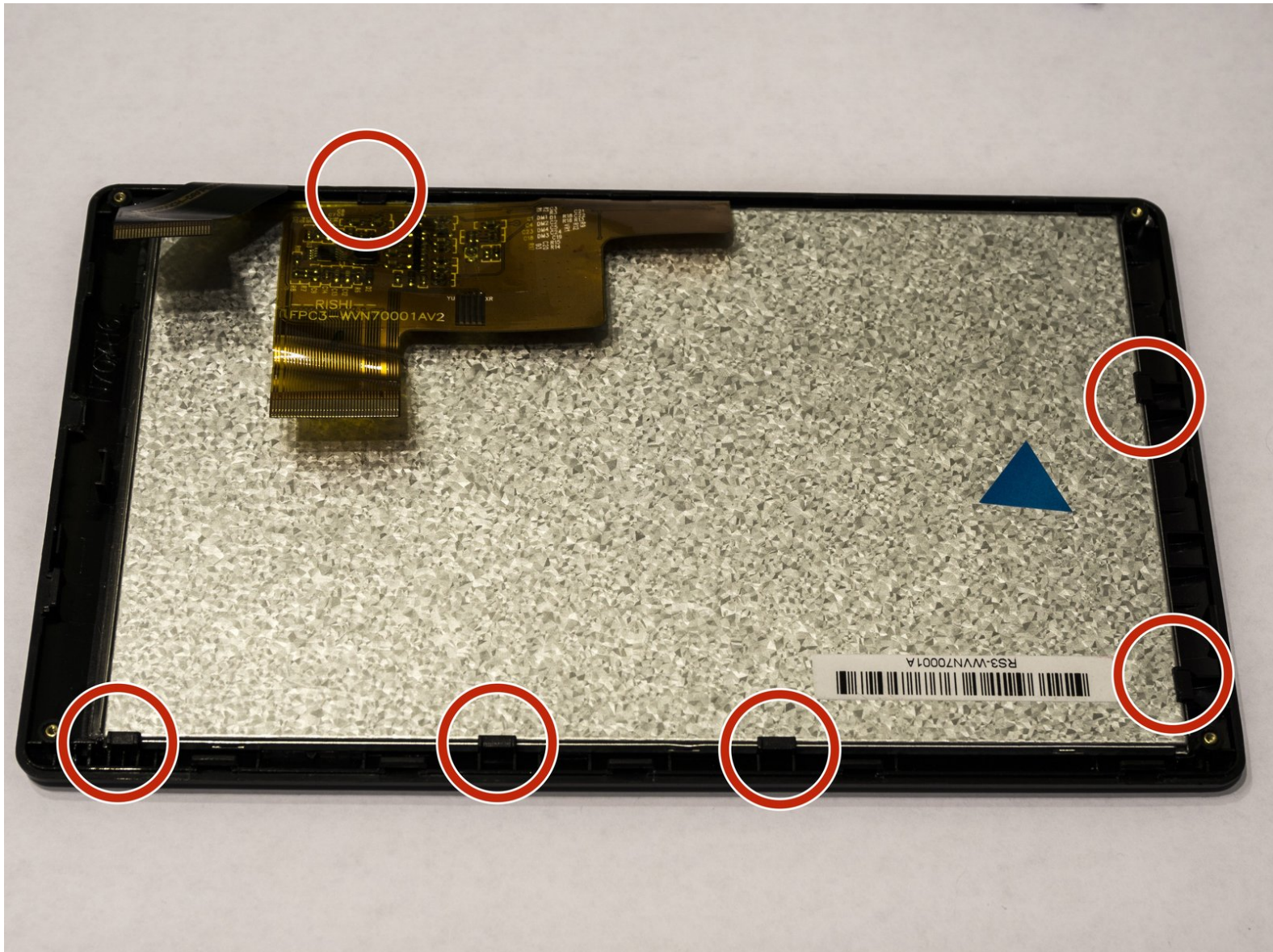




# Polaroid PMID701i 10 Screen Replacement

Written By: Amy Li



---

## INTRODUCTION

If the screen fails to display properly, consider using this guide to replace it.

---




### TOOLS:

- [iFixit Opening Tools](#) (1)
-

## Step 1 — Panel



 Turn off and unplug the device before starting replacement.

- Flip the device so that the screen faces down, with the back facing up.
-  The back panel attaches to the device with four 4.0mm long screws, one at each corner, indicated by the red circles in the picture.
- Unscrew the four screws with a PH000 screwdriver.

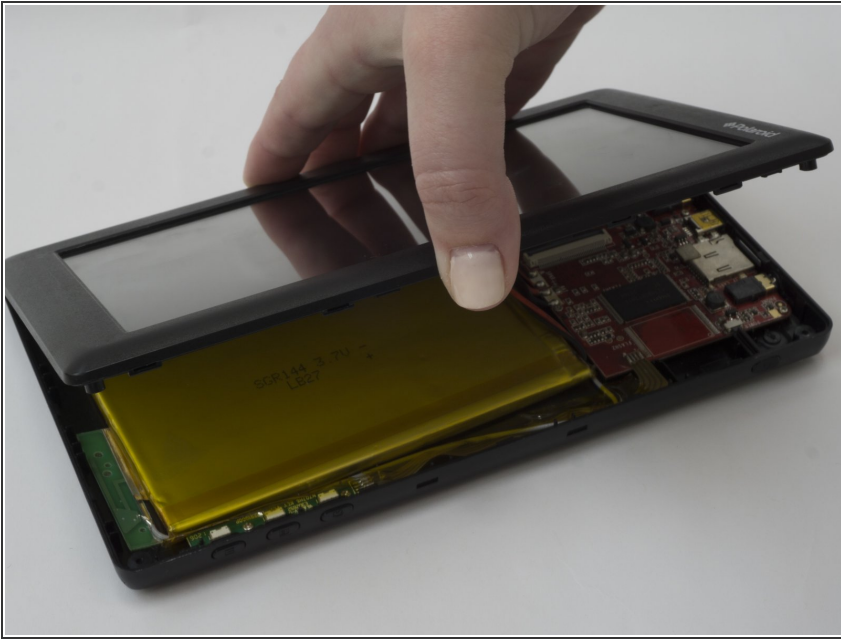
## Step 2



- Flip the device over so that the screen faces up, and the back faces down.
- Separate the front panel using the Opening Tool on a corner to create an opening.
- ⓘ Removing the frame for the first time may take a significant amount of force.
- Run the tool along the seams of the device to open up all the sides.

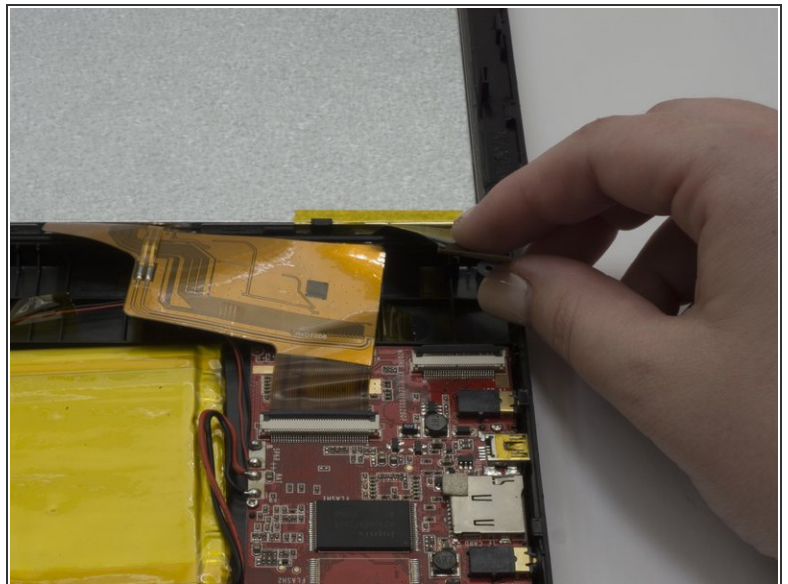
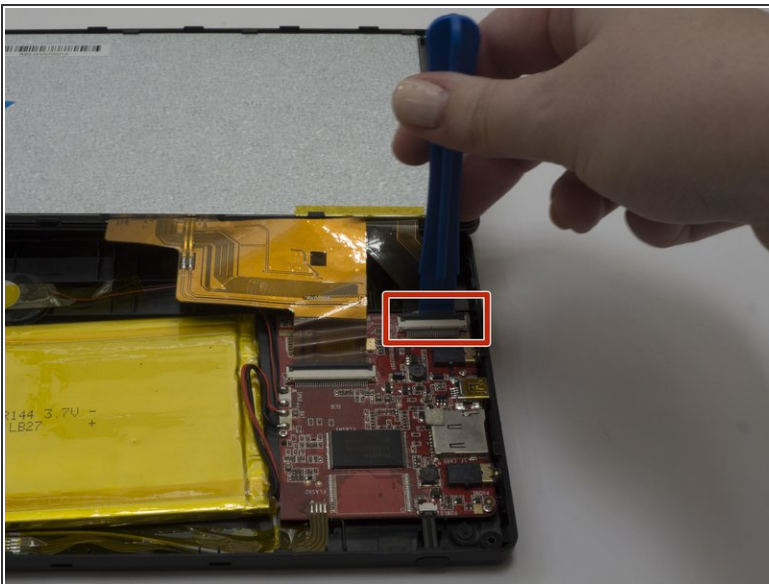


### Step 3



- ⚠ Removing the panel too quickly may damage the cable that attaches parts between the two panels.
- Gently lift the top panel from the bottom panel.

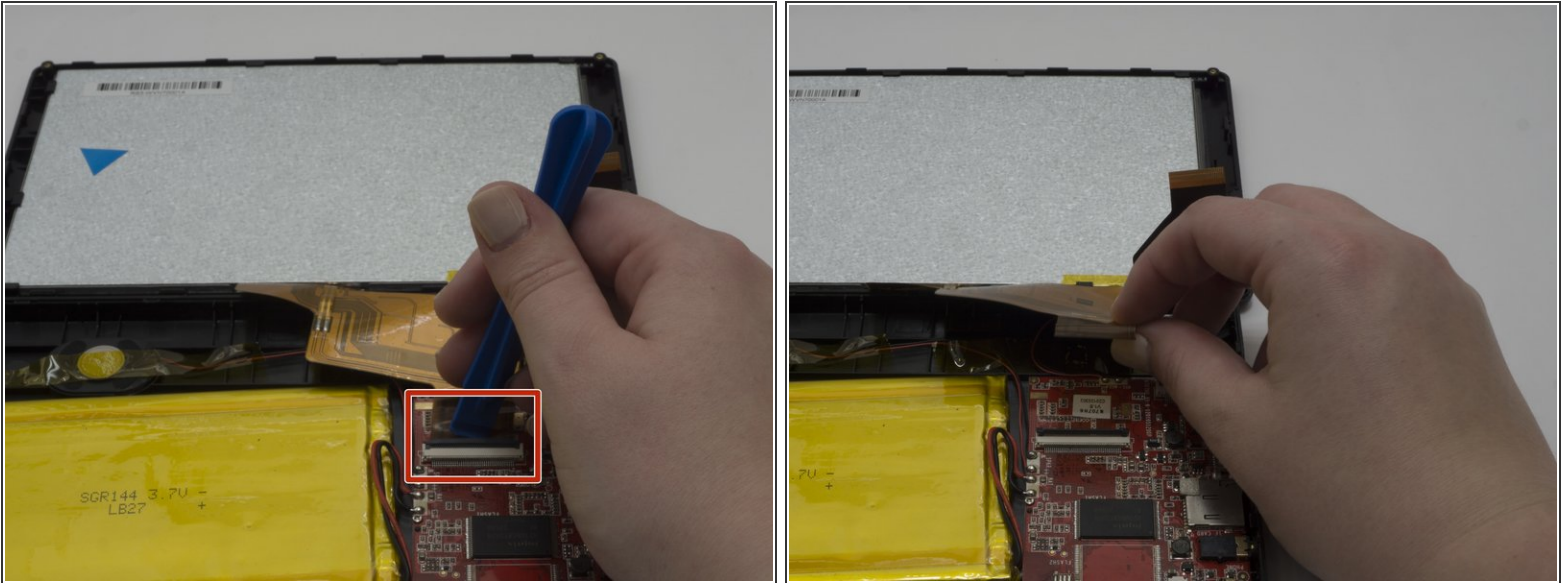
### Step 4



- ⓘ The flexible flat cables (FFC) attach to parts in the bottom panel with zero insertion force (ZIF) connectors.
- Use the Opening tool to flip up the black retaining flap on the smaller connector.
- Gently lift the cable, parallel to the panel, to detach it.

This document was generated on 2019-10-01 02:24:32 AM (MST).

## Step 5



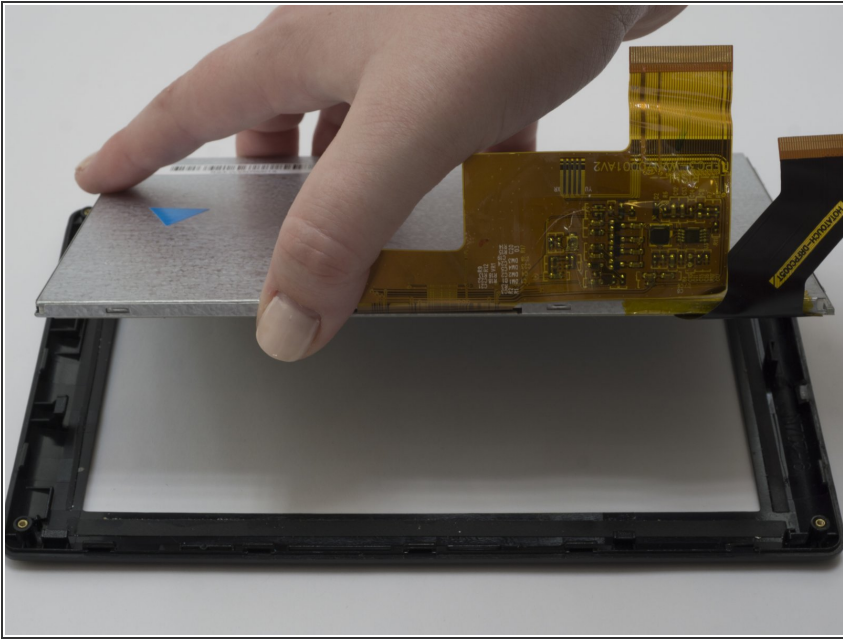
- Use the Opening tool to flip up the black retaining flap on the larger connector.
- Gently lift the cable, parallel to the panel, to detach it.

## Step 6 — Screen



- Set the top panel down so that the interior faces up, and the exterior of the screen faces down.
- ⓘ The screen attaches to the panel with six black plastic snaps.
- Using the Opening Tool, gently lift up each of the snaps to release the screen from the panel.
- ⓘ If a snap does not release when using the tool, attempt to lift it by hand.

## Step 7



- Remove the screen from the frame by lifting it from the side.

To reassemble your device, follow these instructions in reverse order.