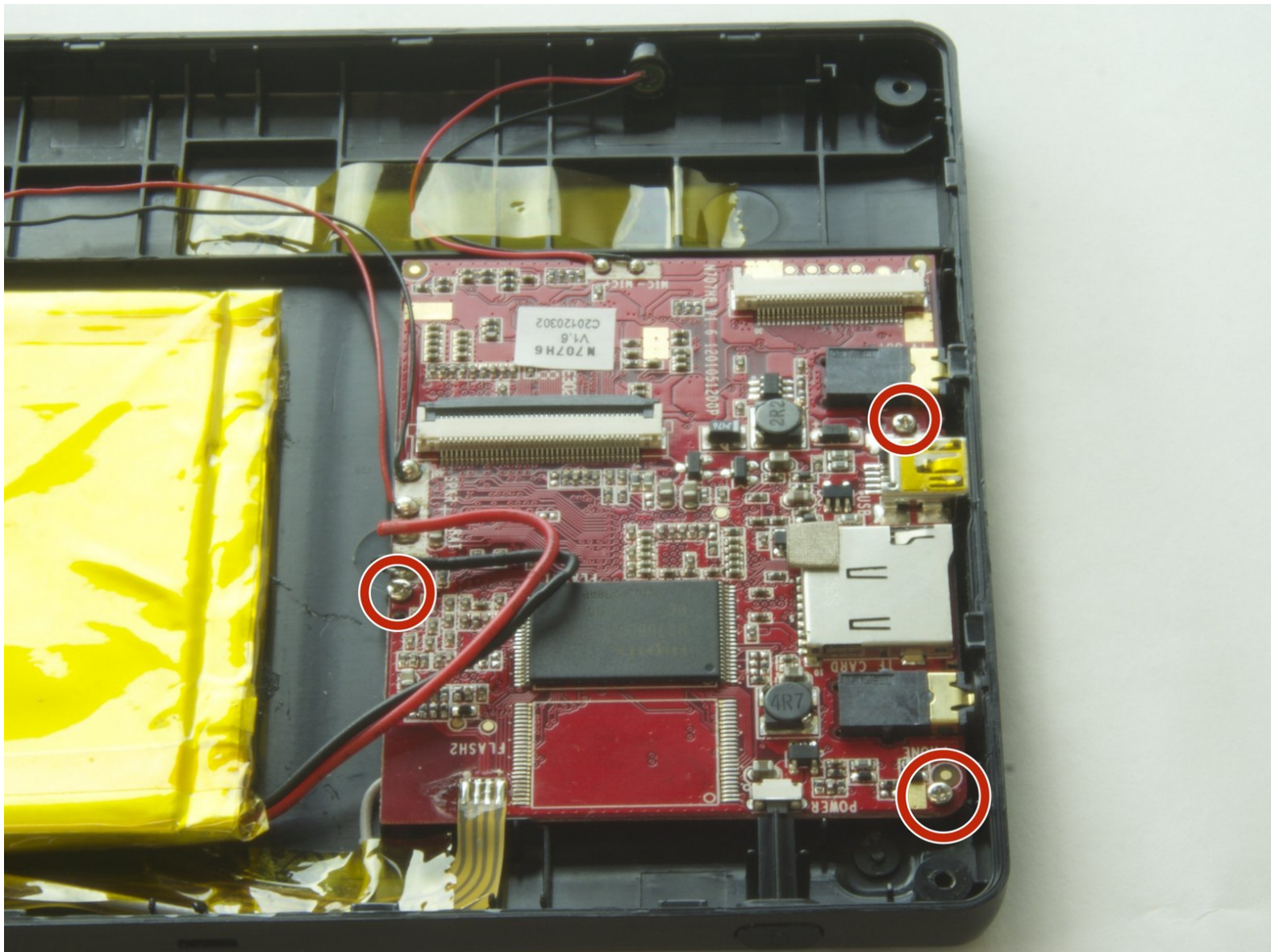




# Polaroid PMID701i 10 USB Charging Port Replacement

Written By: Amy Li



---

## INTRODUCTION

If the device fails to charge or connect to a computer, consider using this guide to replace the USB charging port.

---




### TOOLS:

- [Phillips #000 Screwdriver](#) (1)
  - [iFixit Opening Tools](#) (1)
  - [Soldering Iron](#) (1)
  - [Tweezers](#) (1)
-

## Step 1 — Panel



 Turn off and unplug the device before starting replacement.

- Flip the device so that the screen faces down, with the back facing up.
-  The back panel attaches to the device with four 4.0mm long screws, one at each corner, indicated by the red circles in the picture.
- Unscrew the four screws with a PH000 screwdriver.

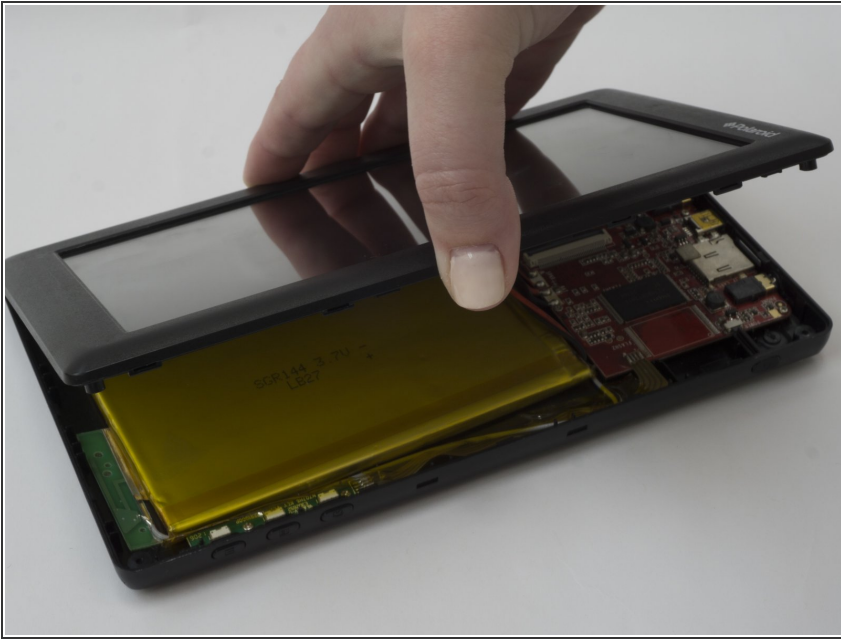
## Step 2



- Flip the device over so that the screen faces up, and the back faces down.
- Separate the front panel using the Opening Tool on a corner to create an opening.
- ⓘ Removing the frame for the first time may take a significant amount of force.
- Run the tool along the seams of the device to open up all the sides.

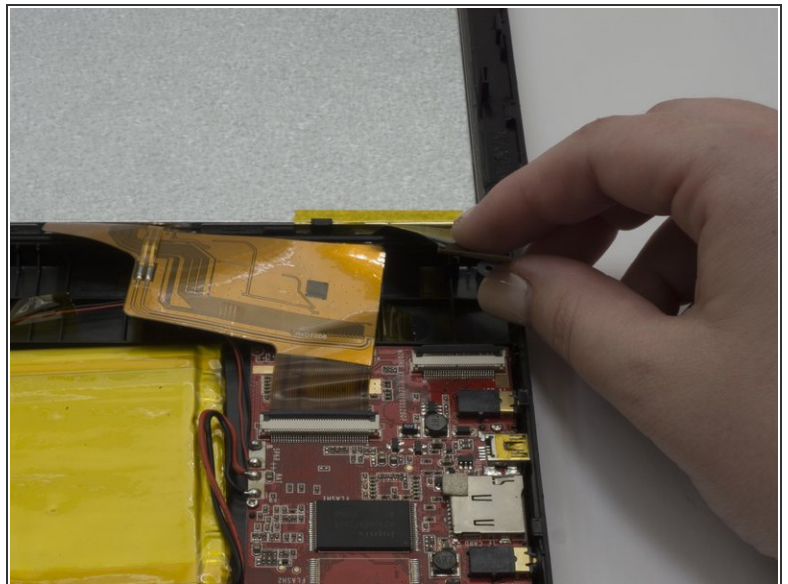
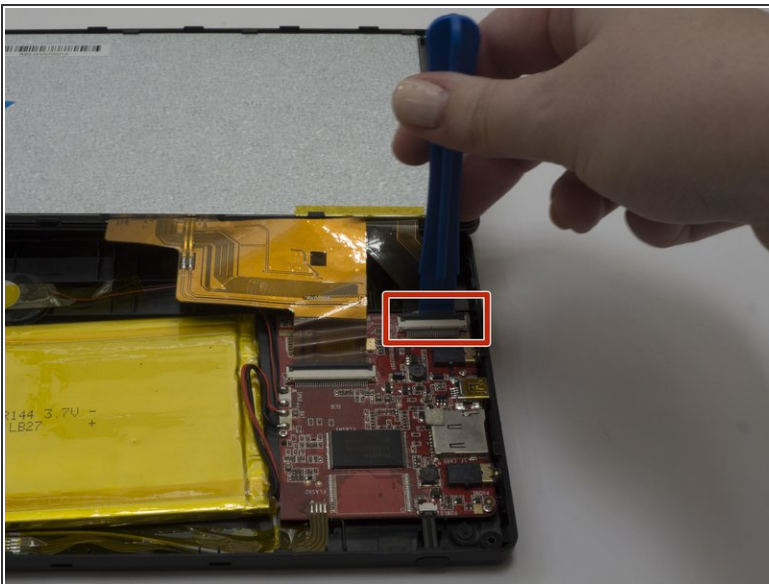


### Step 3



- ⚠ Removing the panel too quickly may damage the cable that attaches parts between the two panels.
- Gently lift the top panel from the bottom panel.

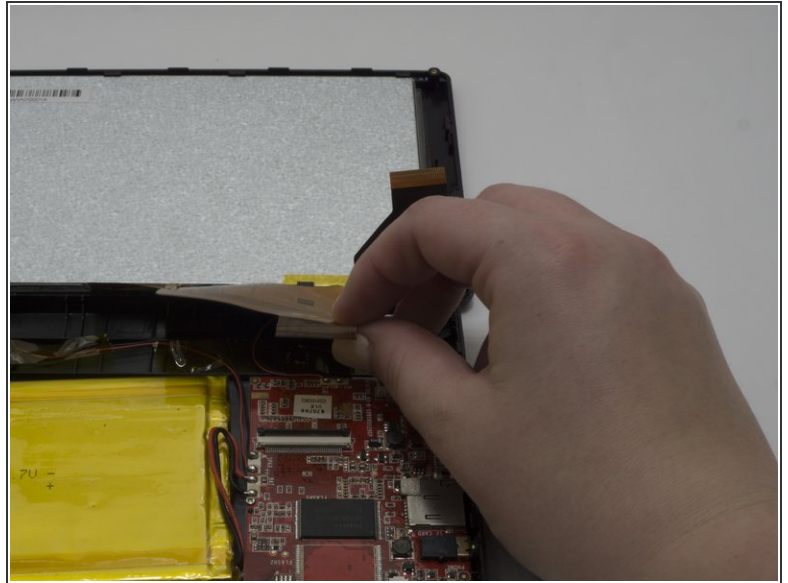
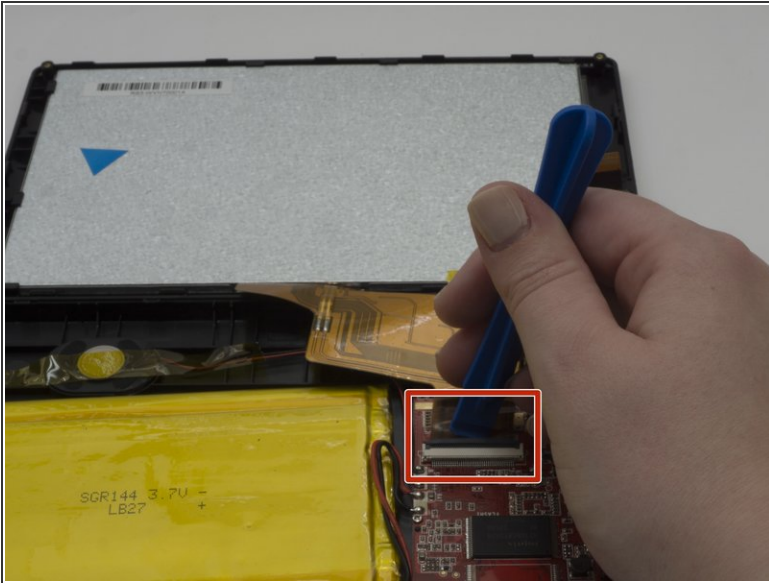
### Step 4



- ⓘ The flexible flat cables (FFC) attach to parts in the bottom panel with zero insertion force (ZIF) connectors.
- Use the Opening tool to flip up the black retaining flap on the smaller connector.
- Gently lift the cable, parallel to the panel, to detach it.

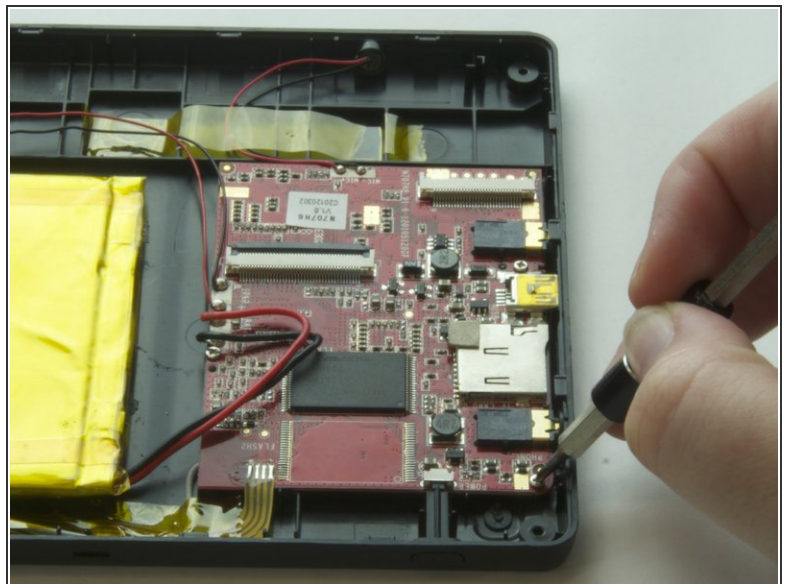
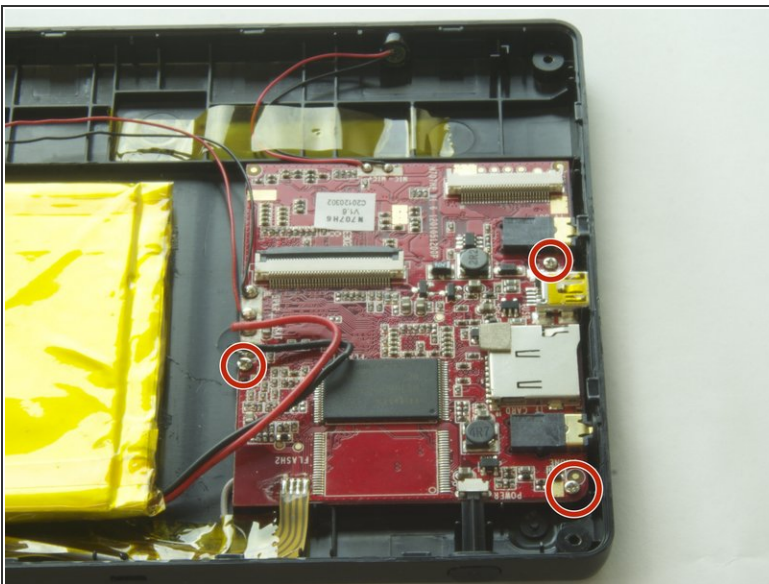
This document was generated on 2019-10-13 11:10:44 PM (MST).

## Step 5



- Use the Opening tool to flip up the black retaining flap on the larger connector.
- Gently lift the cable, parallel to the panel, to detach it.

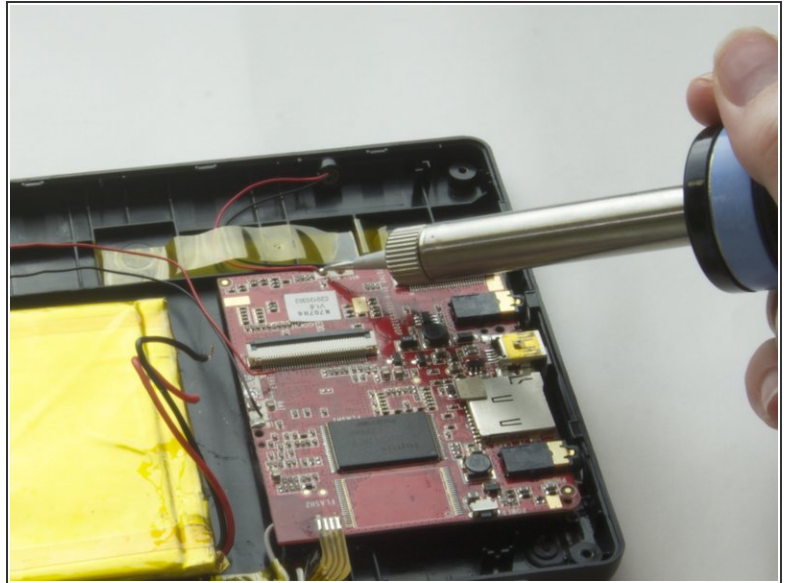
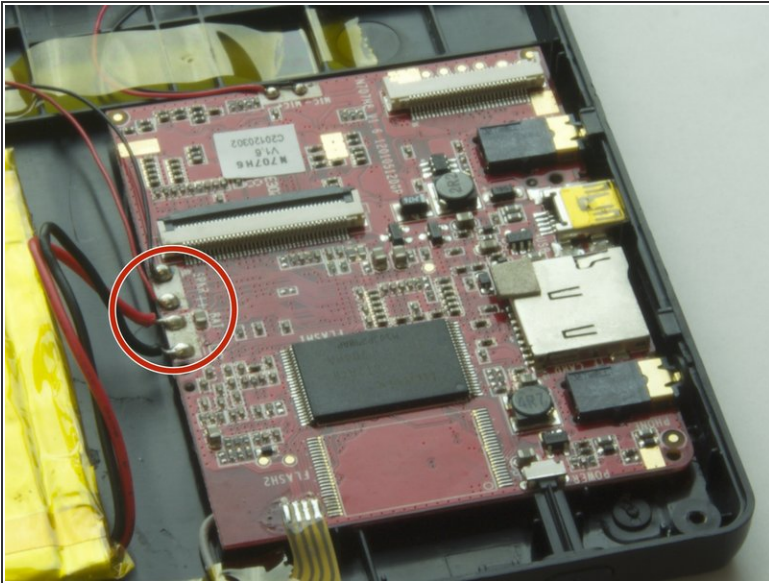
## Step 6 — USB Charging Port



- ⓘ The motherboard attaches to the back panel with three 3.5mm long screws.
- Unscrew the three screws with a PH000 screwdriver.

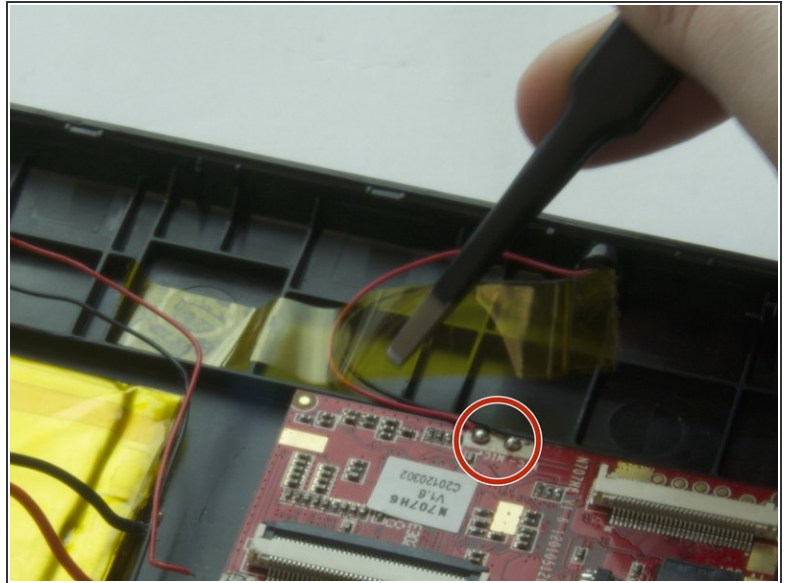
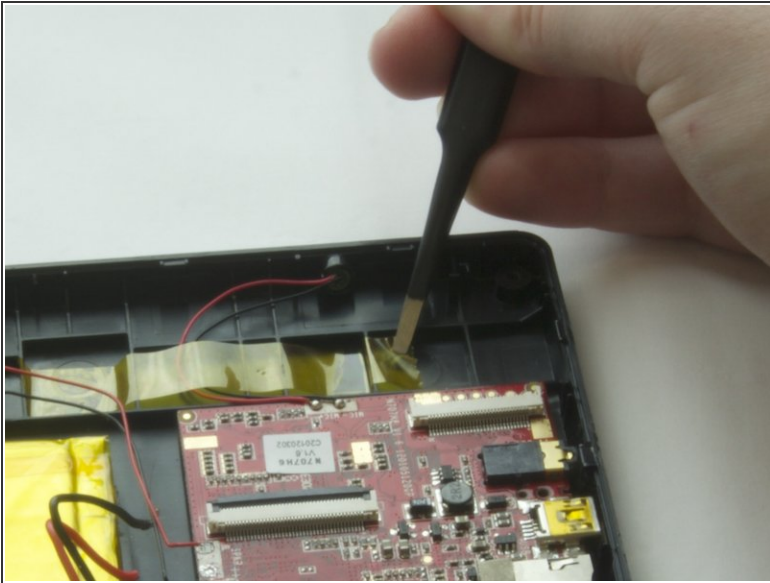


## Step 7



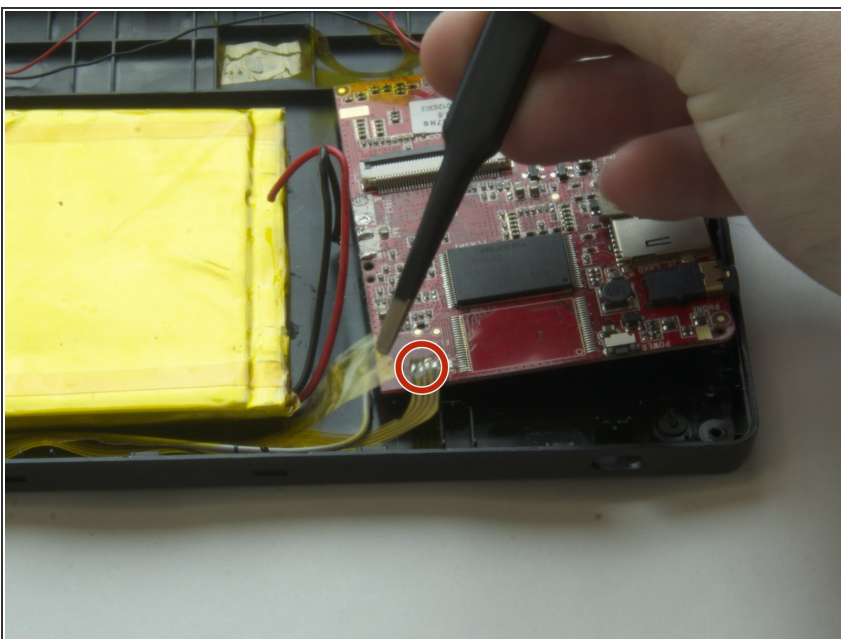
- ⓘ Solder beads attach the wires that connect the motherboard to other parts, such as the battery and the speaker.
- Desolder the wires from the motherboard. For detailed information, refer to the [Solder and Desolder guide](#).

## Step 8



- ❗ Some of the wires attach to the panel with tape as well.
  - Use tweezers to gently lift the tape from the wires and plastic.
  - Desolder the wires from the motherboard.

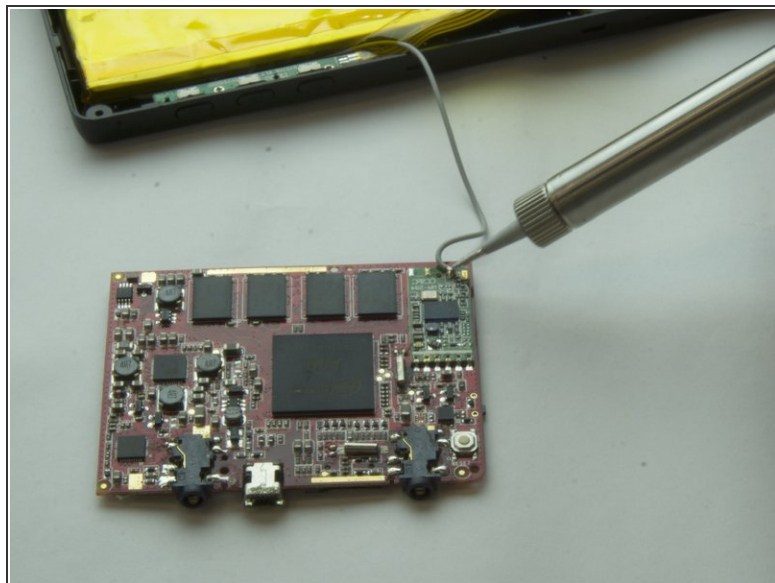
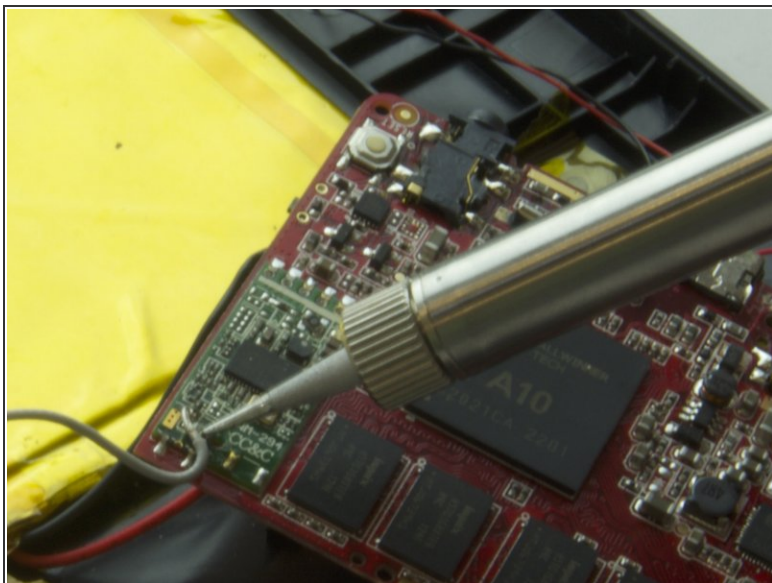
## Step 9




- Use tweezers to gently lift the yellow tape that tapes down the yellow flat cable.
- Desolder the flat cable.

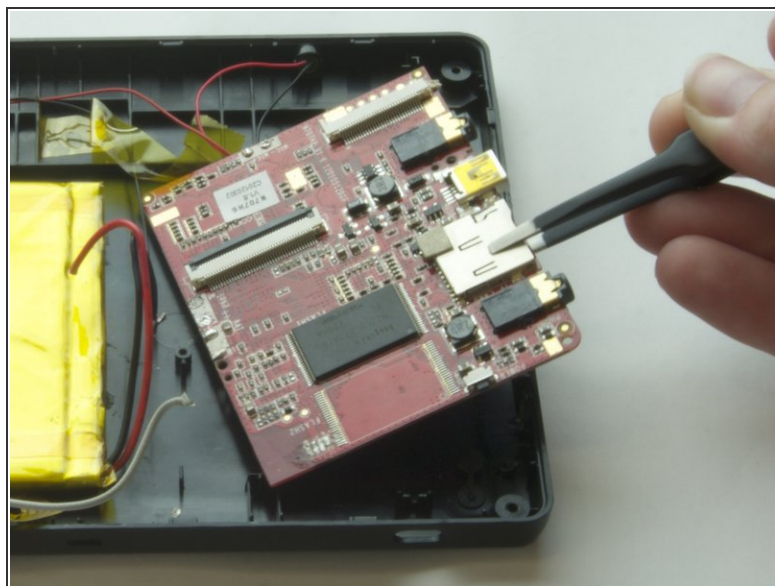
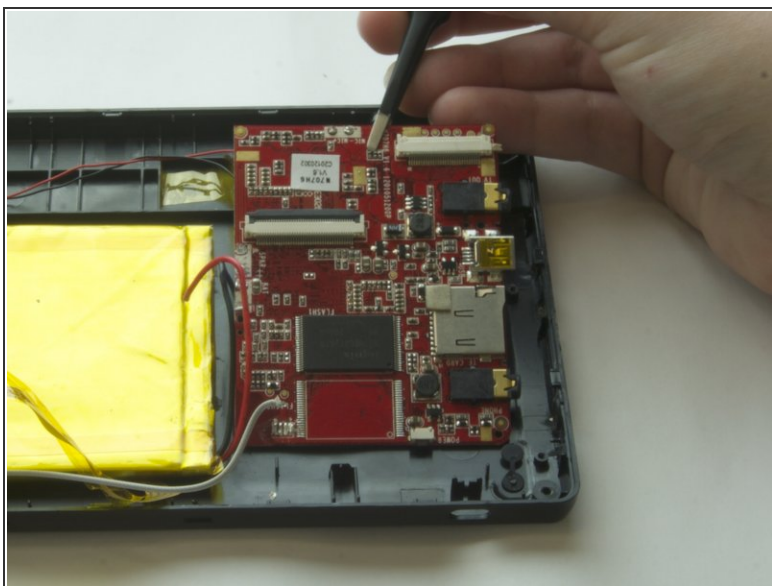


## Step 10



-  There is a grey wire attached to the back side of the motherboard.
- Flip the motherboard over to the side so that the grey wire and its solder bead faces up.
  - Desolder the grey wire from the motherboard.

## Step 11



- Use tweezers to lift the motherboard from the panel.

To reassemble your device, follow these instructions in reverse order.