



Polaroid PTAB7XC Screen Replacement

A cracked or scratched screen can be replaced with an unblemished screen.

Written By: Meg Lybbert



INTRODUCTION

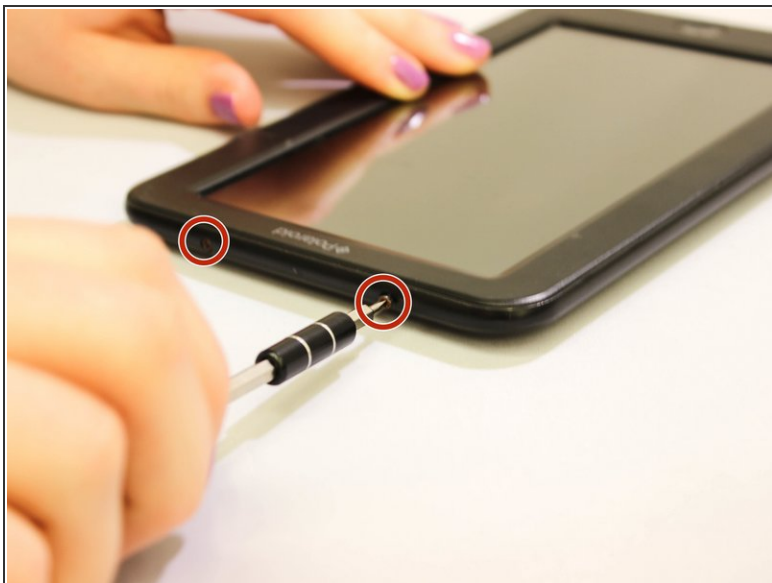
This process requires desoldering and the removal of many components. For more on information about soldering see [here](#). However, replacing the screen for this device is not as difficult as screen replacement for many other devices.



TOOLS:

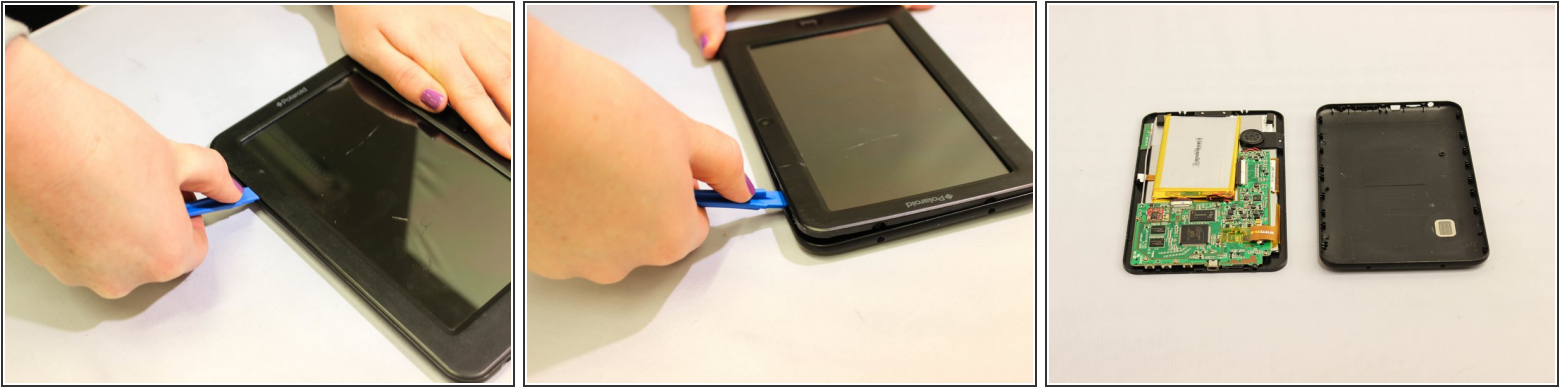
- [Tweezers](#) (1)
 - [Soldering Iron](#) (1)
 - [Solder Vacuum](#) (1)
 - [Plastic Cards](#) (1)
 - [iFixit Opening Tools](#) (1)
 - [64 Bit Driver Kit](#) (1)
-

Step 1 — Screen



- Remove the two 7 mm screws on the top of the device using a J00 Phillips screwdriver and by turning the screws counterclockwise.
- ⓘ If the screw heads have corroded or been stripped, it may be necessary to use a larger screwdriver head, such as the J0.

Step 2



- Pry the seam between the screen and the case on all four sides with a large plastic opening tool until the plastic case comes off.
 - Lift the device off of the case and flip over the device so that it sits screen side down.
 - The device is now free from the plastic casing.
- i** The power and/or volume buttons may fall out at this point. There is no problem with this; however, be sure to remember to reinstall them when reassembling the device.

Step 3



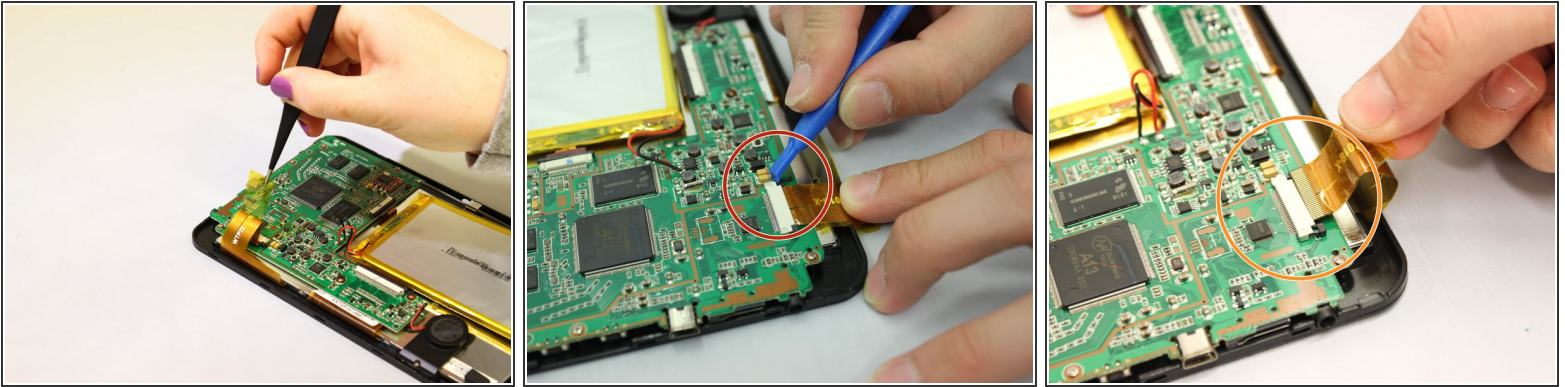
- Wedge a plastic card beneath the battery unit.
 - Wiggle the card side to side and up and down gently until the glue sealing the battery to the device is broken.
- ⚠ Do not rupture the battery; it poses a serious safety hazard.
- ℹ There is a plastic bag around the battery; if torn or stretched, there is no safety hazard.

Step 4



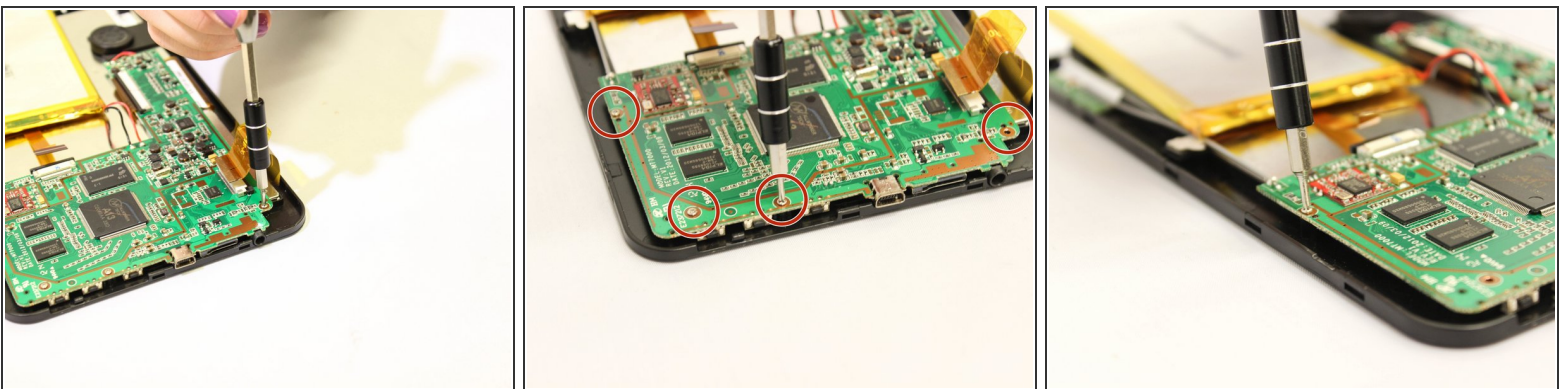
- [Desolder](#) the following components from the motherboard.
 - Desolder from the motherboard the red wire that connects to the speaker unit.
 - Desolder from the motherboard the black wire that connects to the speaker unit.
 - Desolder from the motherboard the gray wire that runs along the edge of the device.
- i** The motherboard will now be detached from any wires connecting to the device except for those attached to the battery.

Step 5



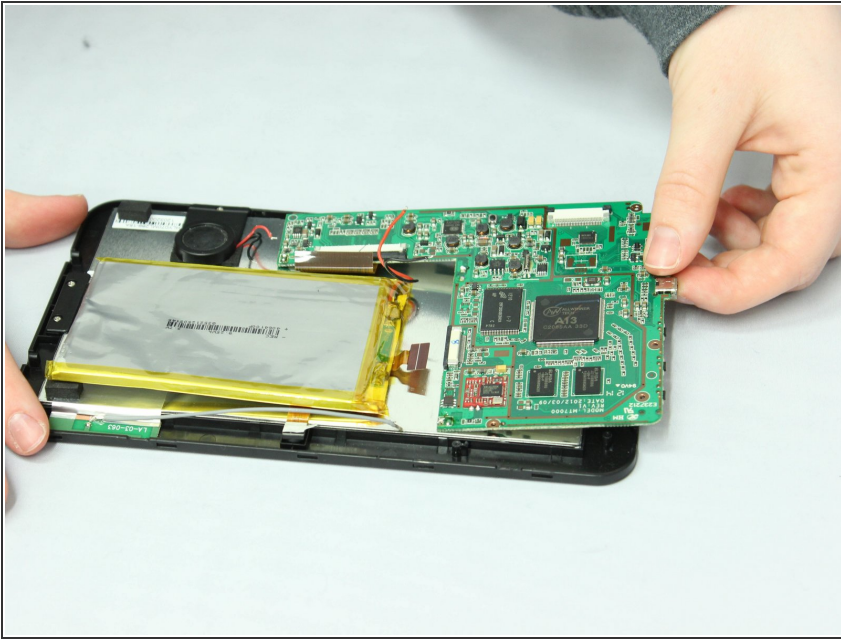
- Use tweezers to unstick the medium width yellow ribbon cable from the motherboard.
- Use a small opening tool to slide the two small black holding clips off of the white connector to which the medium width yellow ribbon cable is attached.
- Use your fingers to gently pull the medium width yellow ribbon cable out of the white connector.
- Repeat the last two actions to disconnect the narrower yellow ribbon cable **and** the wider yellow ribbon cable from the motherboard.
- The motherboard and battery will now be detached from any ribbon cables connecting to the device.

Step 6



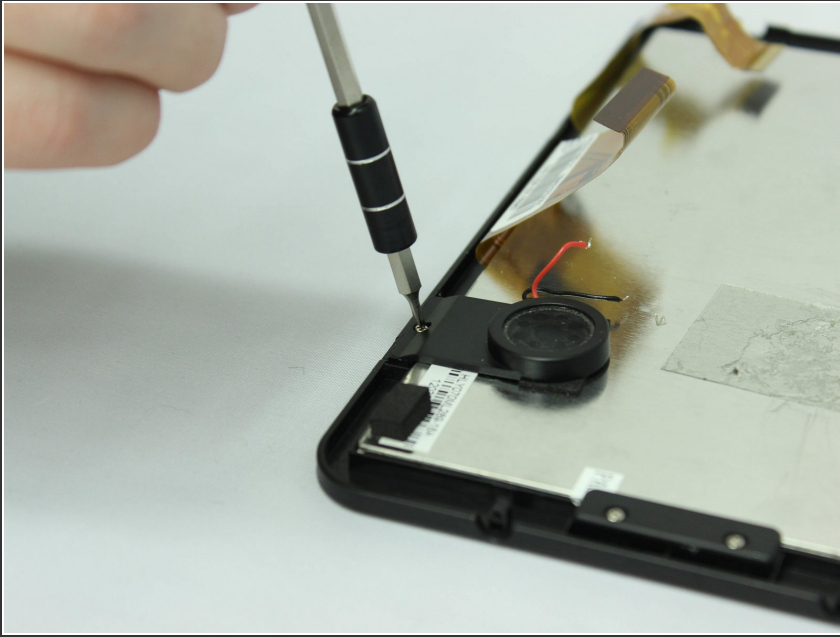
- Use the PH000 screwdriver remove the four 5 mm screws along the bottom edge of the motherboard, turning them counterclockwise.

Step 7



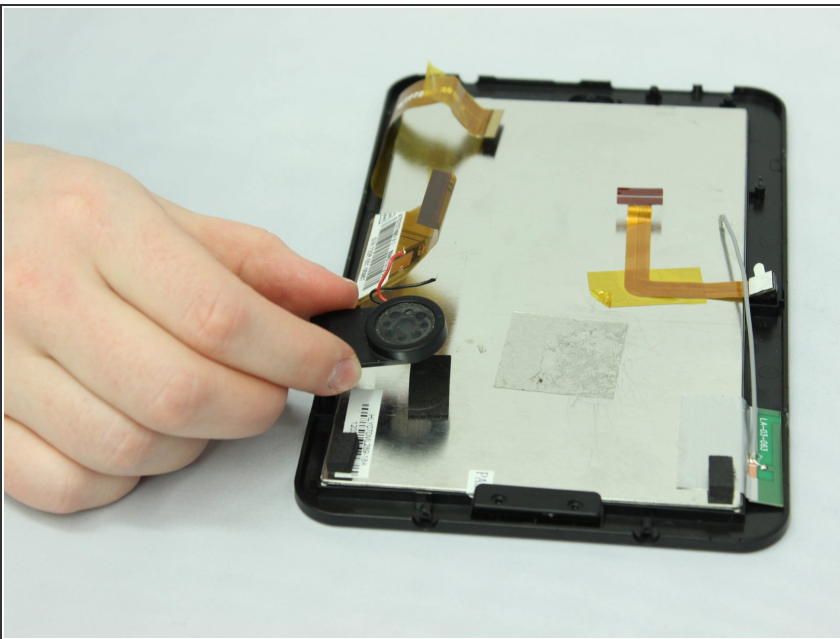
- Lift the motherboard and battery out of the device using your hands.
- ⓘ The back of the display and the speaker unit will now be visible and accessible

Step 8



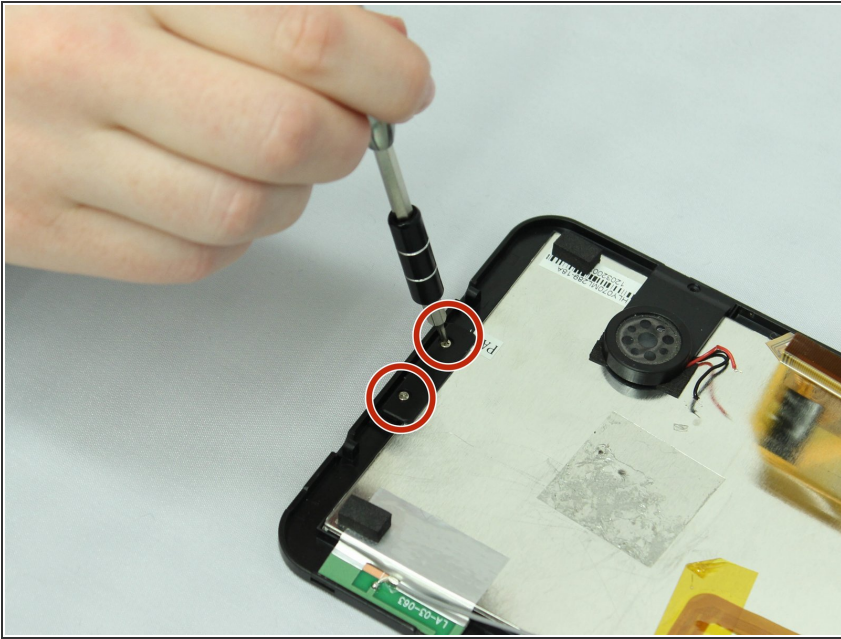
- Remove the 5mm screw that holds the speaker unit on to the display unit using a J000 screwdriver, turning the screws counterclockwise.

Step 9



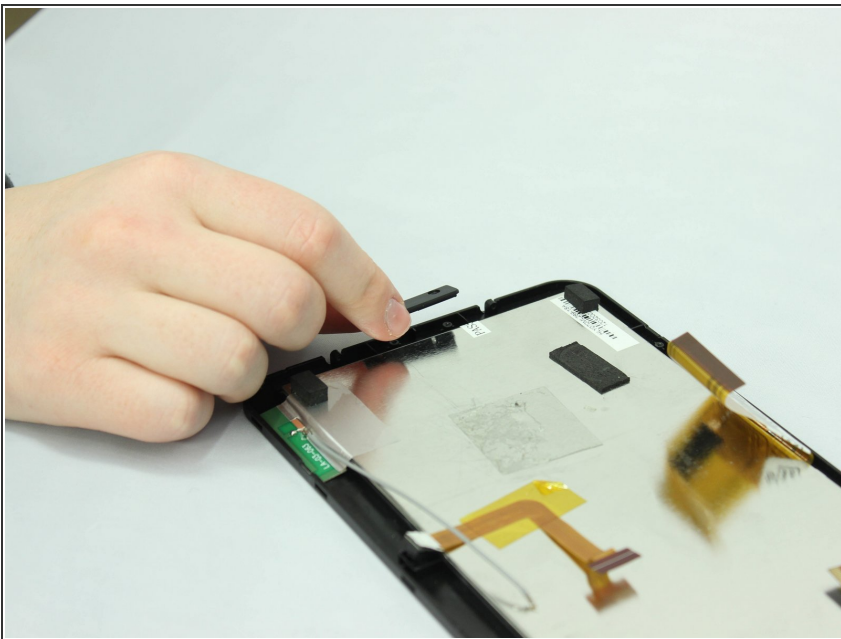
- Using thumb and forefinger, remove the speaker unit from the device

Step 10



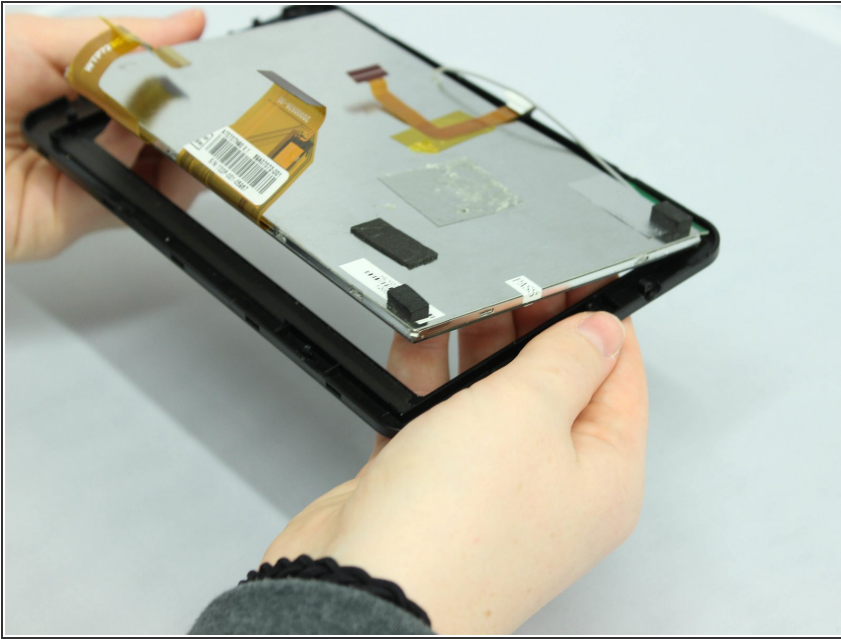
- Using a J000 Philips head screwdriver, remove the two 5mm screws that hold the display unit down at the bottom of the device, turning the screws counterclockwise.

Step 11



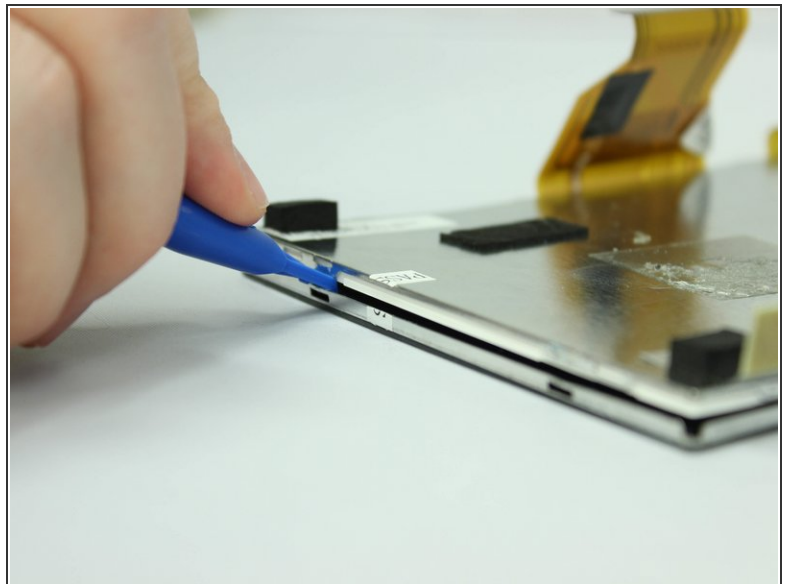
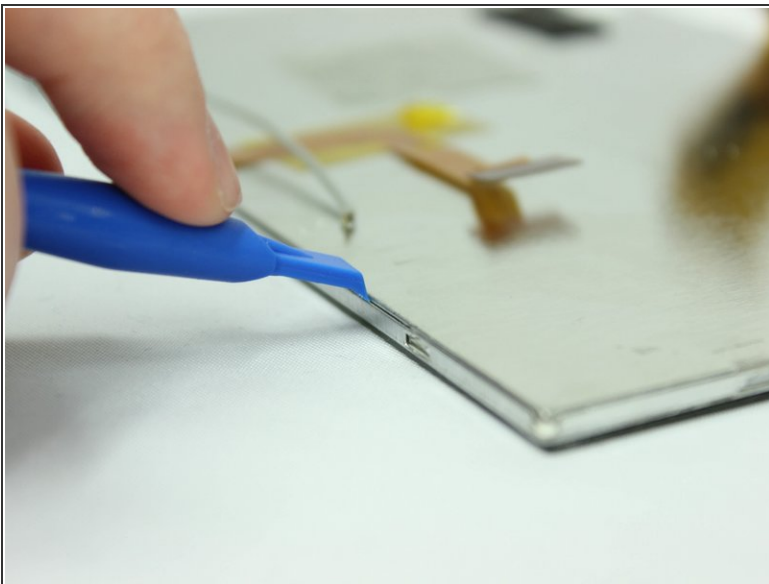
- Lift the small black display protector that was between the screws and the display unit using your forefinger and thumb.

Step 12



- Using both hands, lift up the device.
- Using your fingers, push upward from below on the screen until the screen and display unit pop out of the black plastic frame.
- ❗ The screen and display unit should now be separated from the plastic casing.
- Set the screen and display unit screen-side down.

Step 13



- Wedge the large plastic opening tool into one of the notches on the edge of the screen and display unit.
- Pry until a small tab pops out of the notch.
- Repeat on every notch around the edge of the screen and display unit.

Step 14



- Using your fingers, lift the display unit off of the screen.
- The screen is now replaceable.

To reassemble your device, follow these instructions in reverse order.