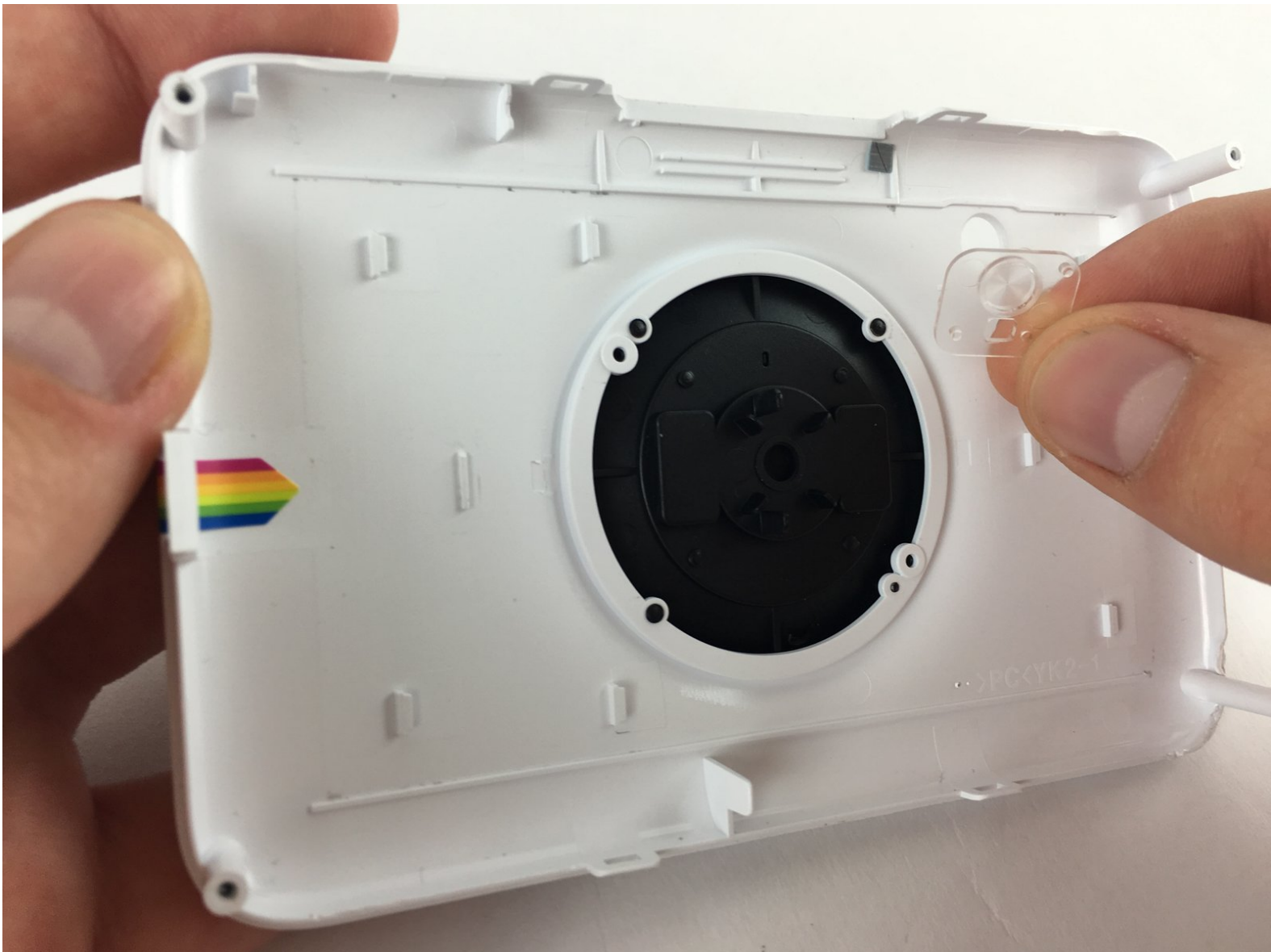




# Polaroid SNAP Flash Cover Replacement

This guide will show you how to replace the Flash Cover for a Polaroid SNAP.

Written By: Austin Broyles



---

## INTRODUCTION

This guide is intended for those who have a malfunctioning Flash or broken/cracked Flash Cover on their Polaroid SNAP.

---



### TOOLS:

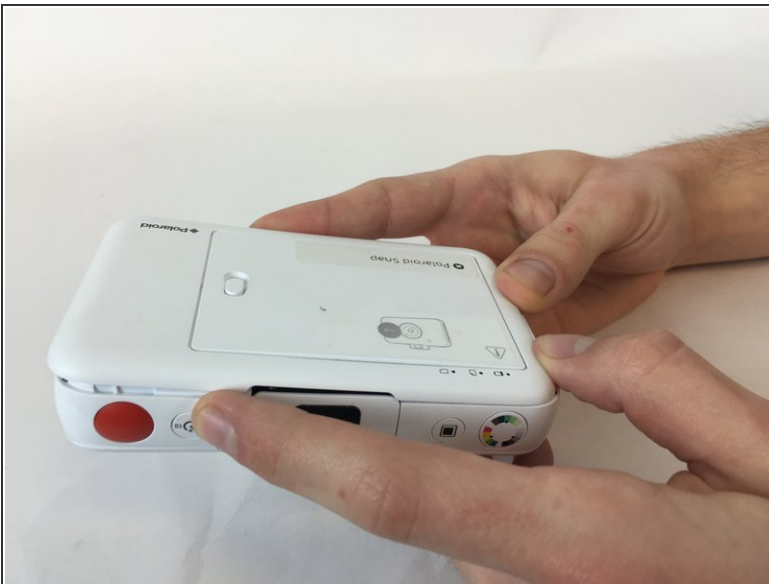
- [iFixit Opening Tools](#) (1)
  - [JIS Driver Set](#) (1)
-

## Step 1 — Front and Rear Face Plate



- Open the paper door of the camera, then locate and remove the screws that are on the top and bottom edge of the inside of the camera.
- Screw head: Phillips, Screw length: 3mm

## Step 2



- Push the rear face plate from the short side nearest the screws you just removed towards the other short side of the camera. It should slide forward and unlock the clips holding it in place.
- Then it should be easy to simply lift the rear face plate up and remove it.

### Step 3



- Locate and remove the four screws on the corners of the camera, they're quite small and may be difficult to remove.
- Screw head: Philips, Screw length: 5mm

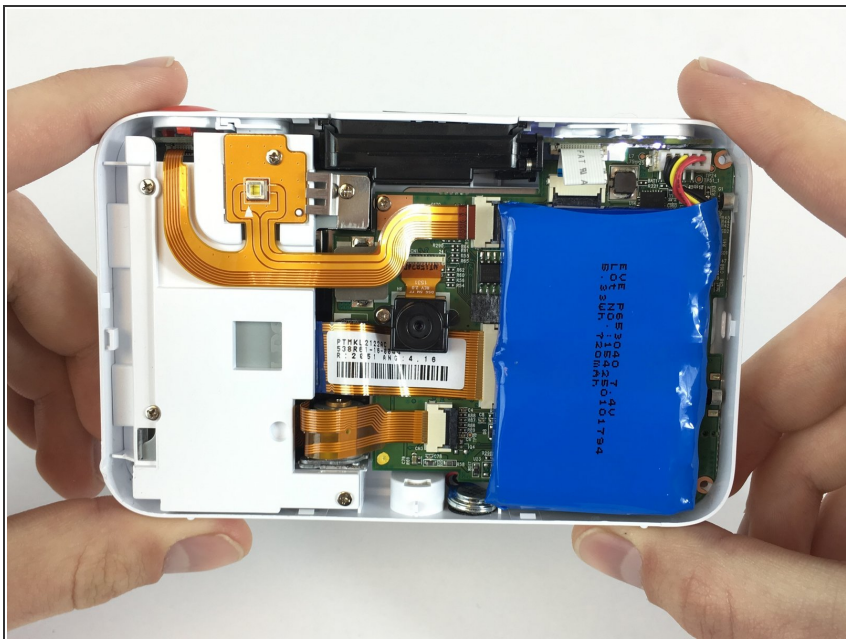
### Step 4



- Once the screws are removed, flip the camera over
- Use a plastic opening tool to disengage the six clips until the front face plate can be removed safely

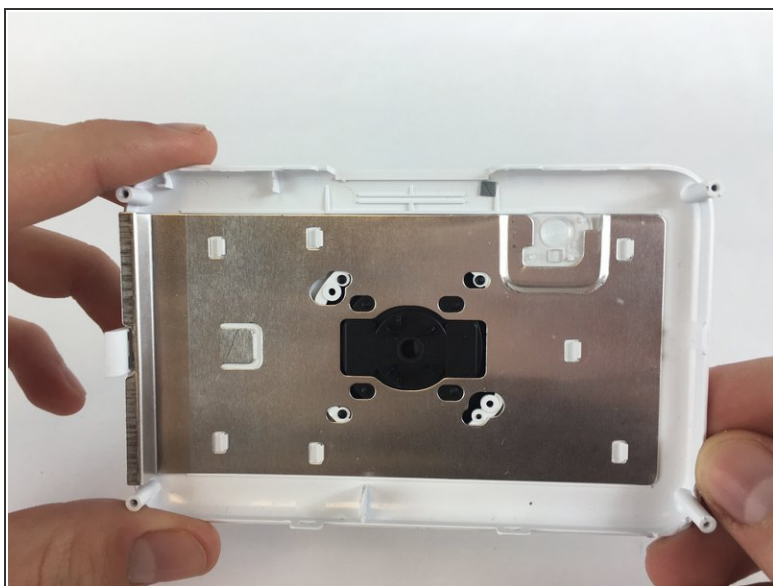


## Step 5



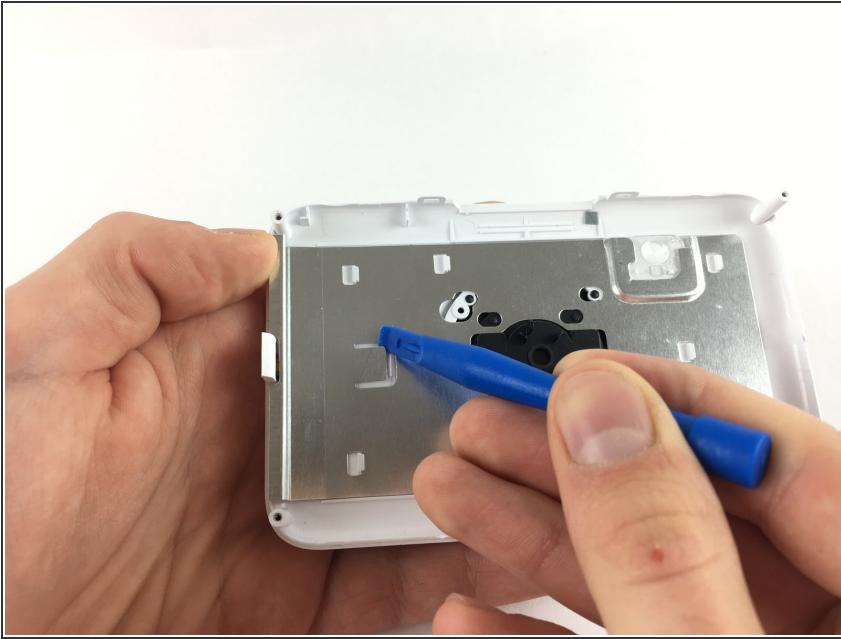
- The cameras innards should now be accessible to you

## Step 6 — Flash Cover



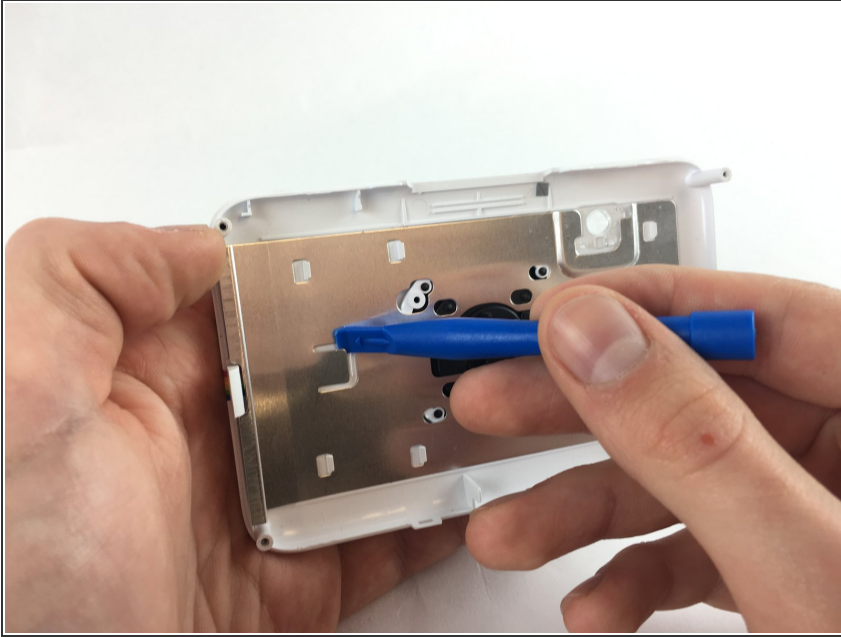
- Flip the front face-plate over, so that you're are looking at the silver plate on the inside.

## Step 7



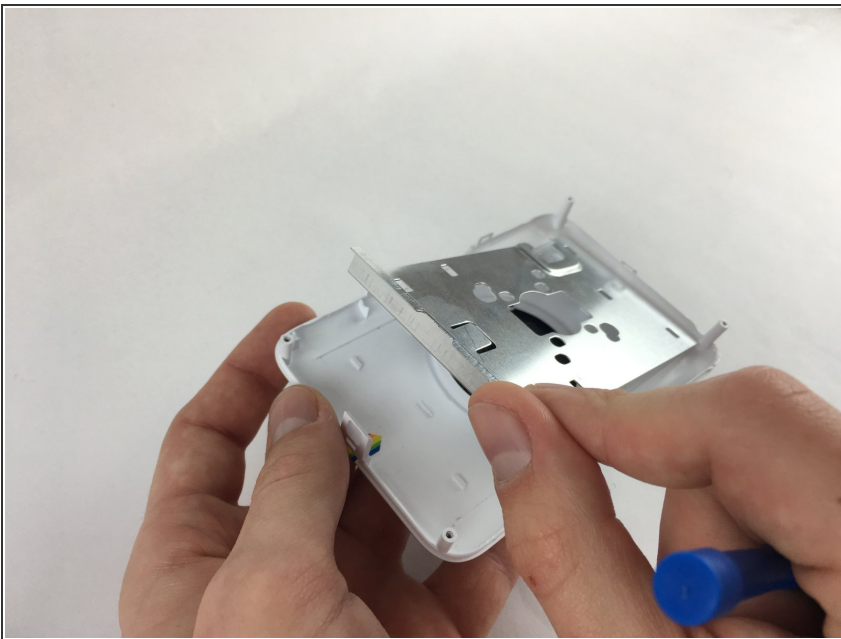
- Use a plastic opening tool and pull up on the small metal tab in the middle-left inside of the front faceplate.

## Step 8



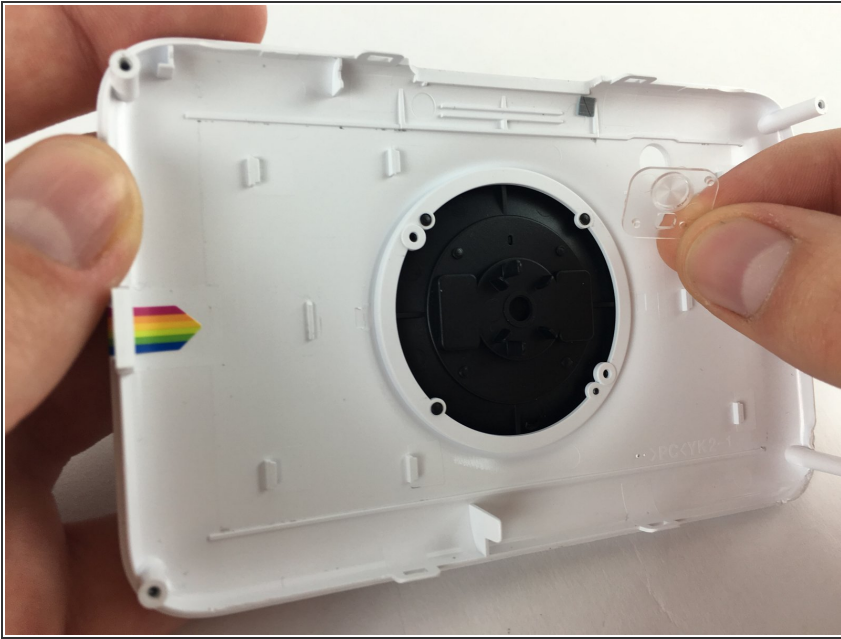
- While pulling up on the metal tab with the plastic opening tool, use your thumb to gently push the metal plate slightly to the right in order to release it from the tabs holding it to the face-plate.

## Step 9



- Once the metal plate is released from the tabs, carefully separate it from the face-plate by pulling it outwards.

## Step 10



- After the metal plate is removed from the front face-plate, locate the small clear flash cover on the top right of the faceplate. The flash cover should easily pop out of place.

## Step 11



- Remove the flash cover and place in the new one, with the holes of the flash cover oriented in the top right and bottom left corners.

To reassemble your device, follow these instructions in reverse order.