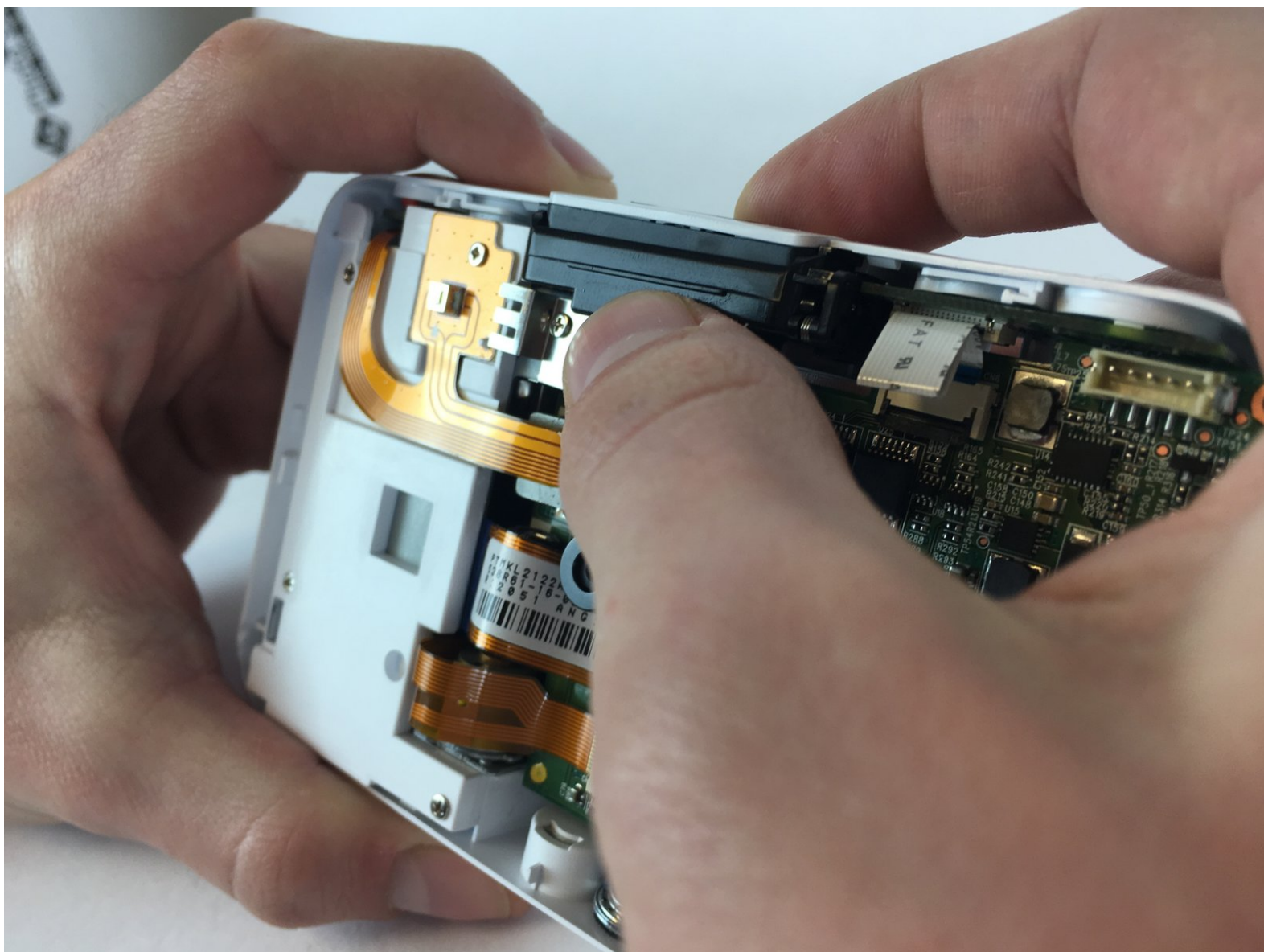




Polaroid SNAP View Finder Replacement

This replacement guide will show you how to replace the view finder on your Polaroid SNAP.

Written By: Austin Broyles



INTRODUCTION

This replacement guide is intended for those who have a broken or malfunctioning view finder on their Polaroid SNAP camera.

TOOLS:

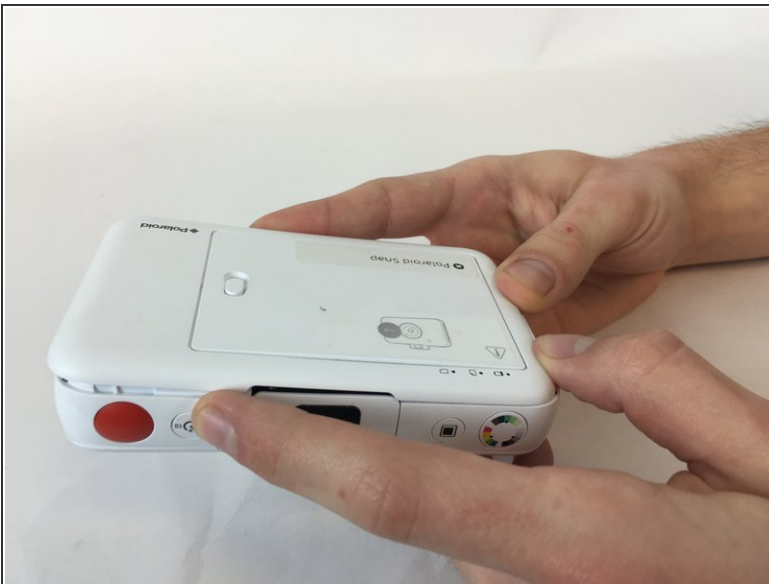
- [iFixit Opening Tools](#) (1)
 - [JIS Driver Set](#) (1)
-

Step 1 — Front and Rear Face Plate



- Open the paper door of the camera, then locate and remove the screws that are on the top and bottom edge of the inside of the camera.
- Screw head: Phillips, Screw length: 3mm

Step 2



- Push the rear face plate from the short side nearest the screws you just removed towards the other short side of the camera. It should slide forward and unlock the clips holding it in place.
- Then it should be easy to simply lift the rear face plate up and remove it.

Step 3



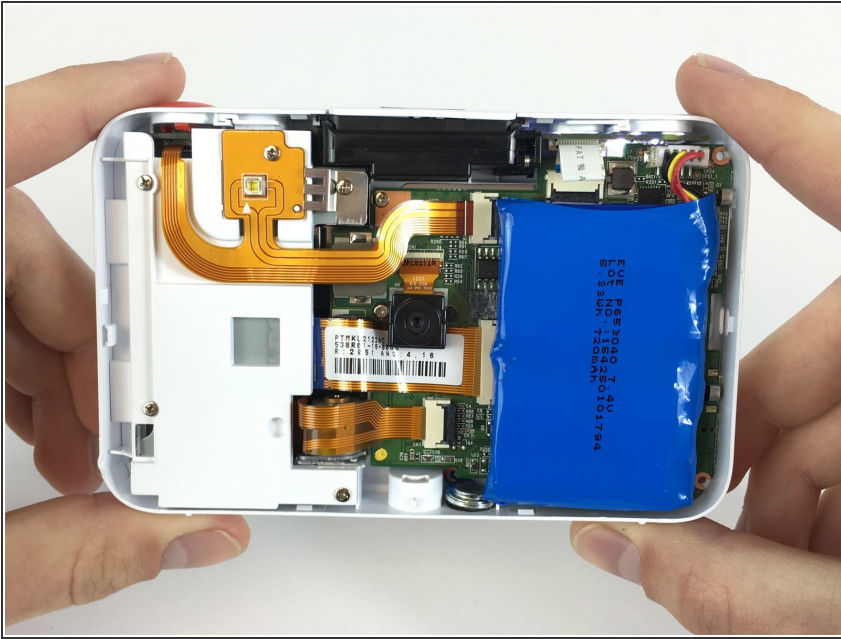
- Locate and remove the four screws on the corners of the camera, they're quite small and may be difficult to remove.
- Screw head: Philips, Screw length: 5mm

Step 4



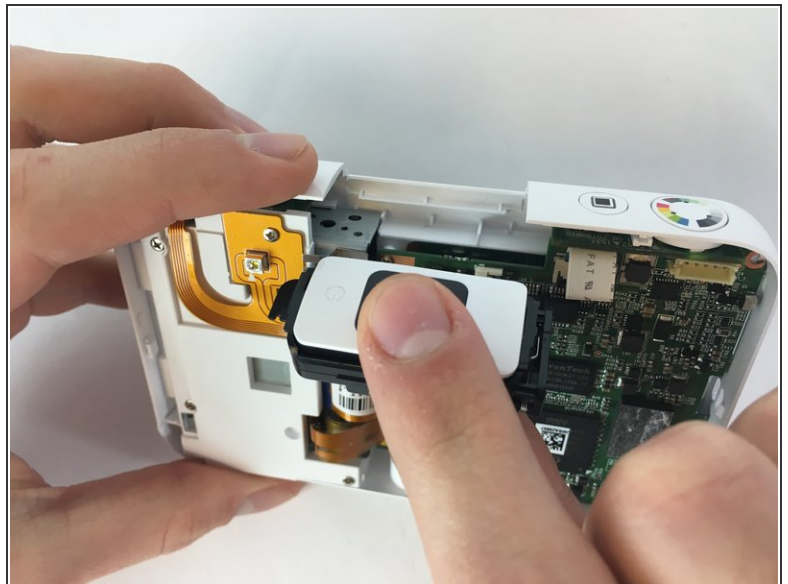
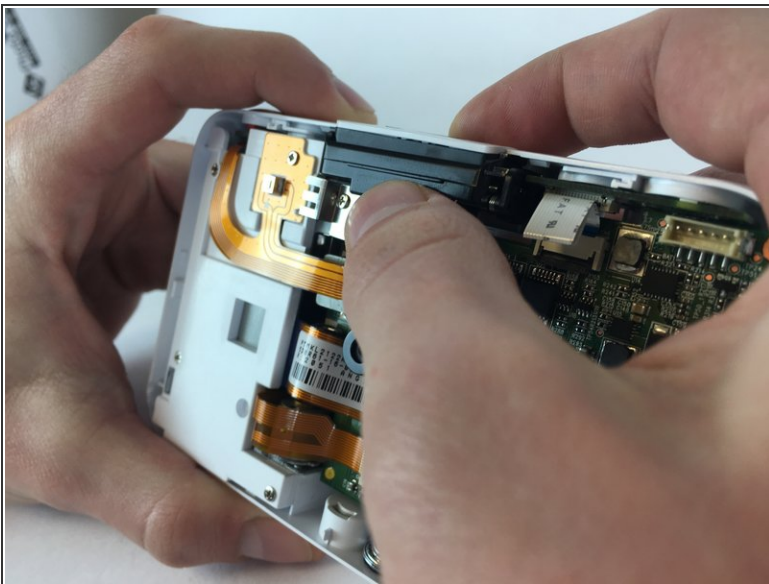
- Once the screws are removed, flip the camera over
- Use a plastic opening tool to disengage the six clips until the front face plate can be removed safely

Step 5



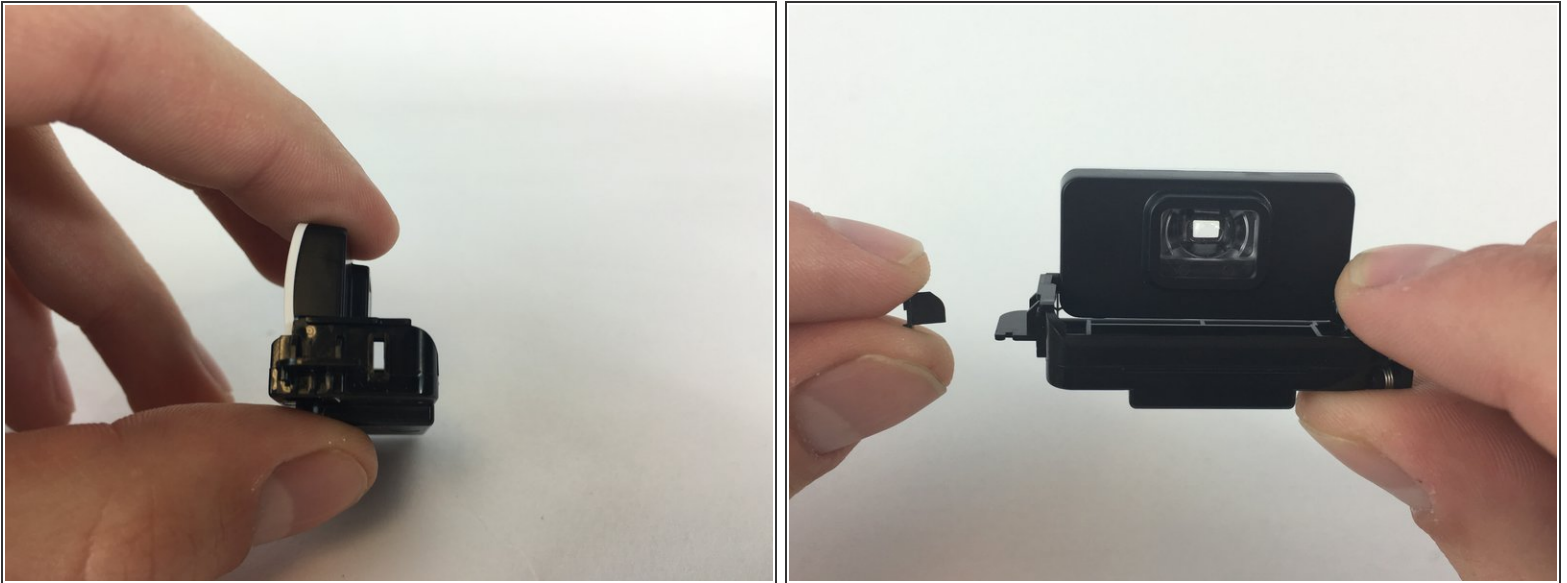
- The camera's innards should now be accessible to you

Step 6 — View Finder



- Gently grasp the view finder (while in the closed position) with your thumb and fore finger. Then carefully pull the viewfinder outwards.

Step 7



- Once the view finder is out, a small black tab should come loose from the viewfinder. Insert this small black tab in to the hole on the side of the new view finder, with the round side up.

To reassemble your device, follow these instructions in reverse order.