



Polaroid Z2300 Battery Replacement

This guide is going to provide repair guides to replace the battery.

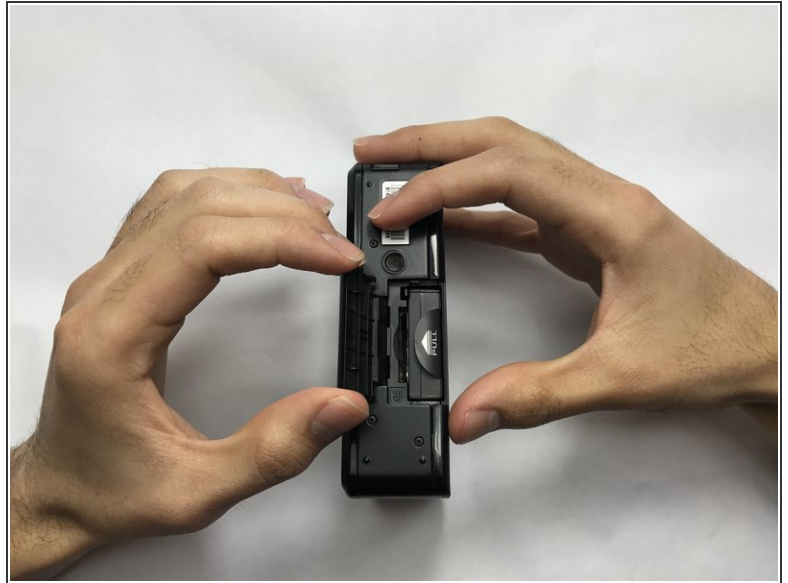
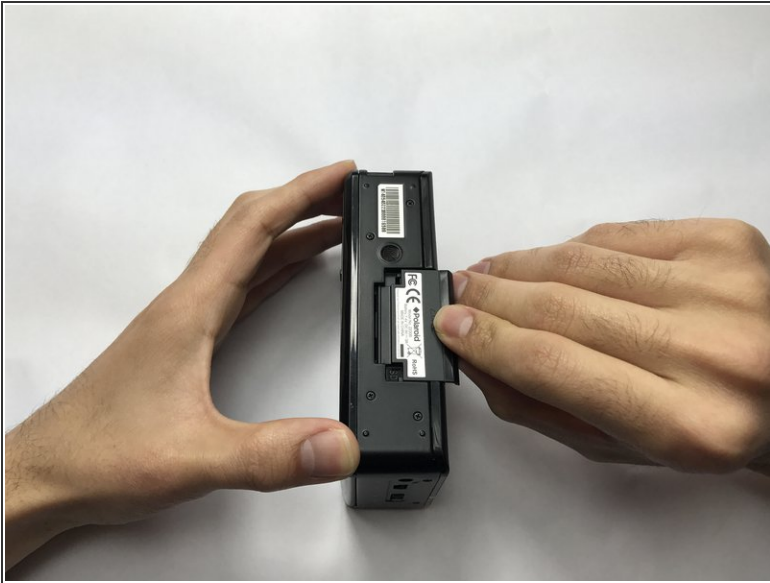
Written By: Jasem Almeeli



INTRODUCTION

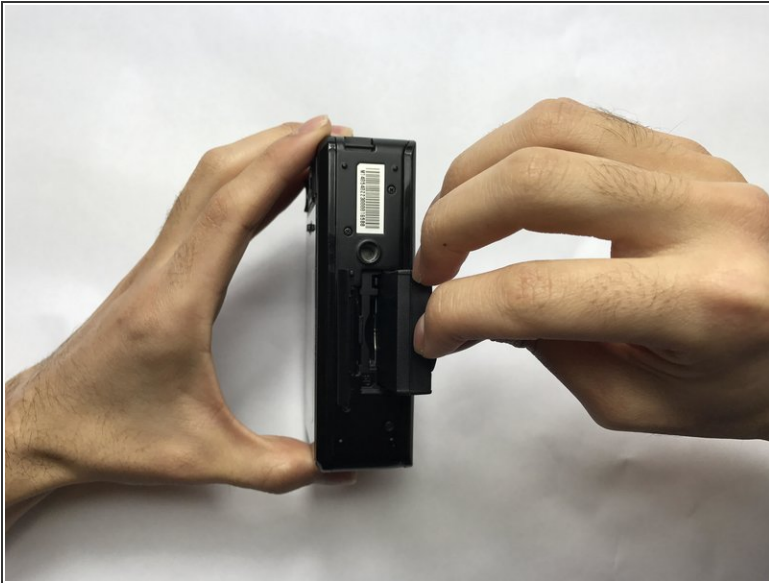
This guide is going to teach the user how to properly replace the battery in the camera.

Step 1 — Battery



- Turn the camera upside down and gently use your thumb to pull the hatch forward and then upwards.
- Once you lift the hatch up you will see the battery.

Step 2



- Once you see the battery, you will see a tab saying 'pull' attached to the battery. gently pull on it until the battery is removed from the camera.
- You can pull the battery easily afterwards.

Step 3



- Afterwards, you can easily reattach the battery back.

To reassemble your device, follow these instructions in reverse order.