



Polaroid Z2300 Control Panel Replacement

Step-by-step guide for replacing a malfunctioned control panel.

Written By: Bradley Marcum



INTRODUCTION

This guide is intended for users who have Polaroid Z2300 with a malfunctioning control panel.



TOOLS:

- [iFixit Opening Tools](#) (1)
 - [JIS #00 Screwdriver](#) (1)
-

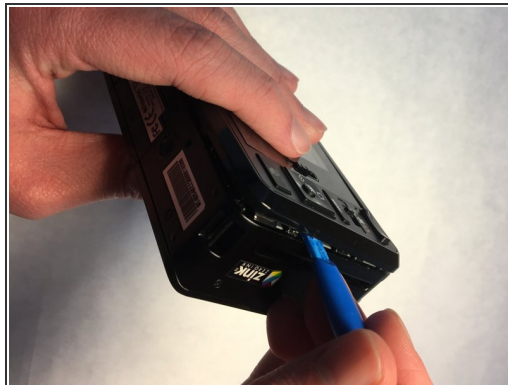
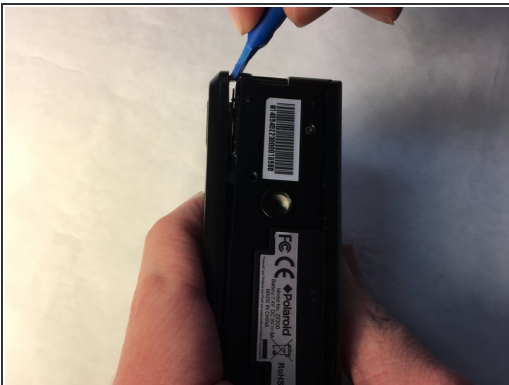
Step 1 — Control Panel Replacement



- Locate and remove the two 2.5 mm long screws on the bottom of the camera.
- Screw head: JIS J00

⚠ The screws are very small, be careful not to strip or lose them!

Step 2



- Once the two screws are removed, flip the camera to back side up.
- Use a plastic opening tool to disengage the outer plastic trim until it can be safely removed.

Step 3



- Use a plastic opening tool to pop the control panel off, it should be easy to lift up and remove.

To reassemble your device, follow these instructions in reverse order.