



# Polaroid Z2300 Screen Replacement

This guide will show the necessary steps to replace the screen on a Polaroid Z2300.

Written By: Bradley Marcum



---

# INTRODUCTION

This guide will show you the required steps to complete a screen replacement.

---



## TOOLS:

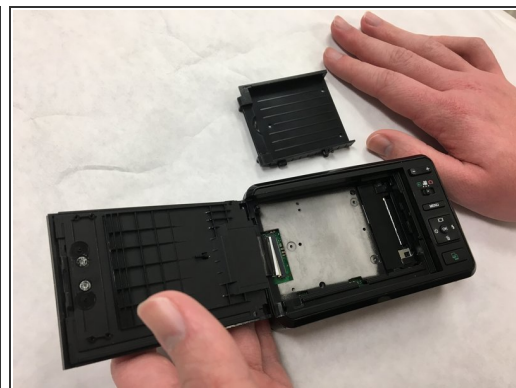
- [iFixit Opening Tools](#) (1)
  - [JIS #00 Screwdriver](#) (1)
-

## Step 1 — Screen



- Flip the camera to back side up and open the paper/screen door.

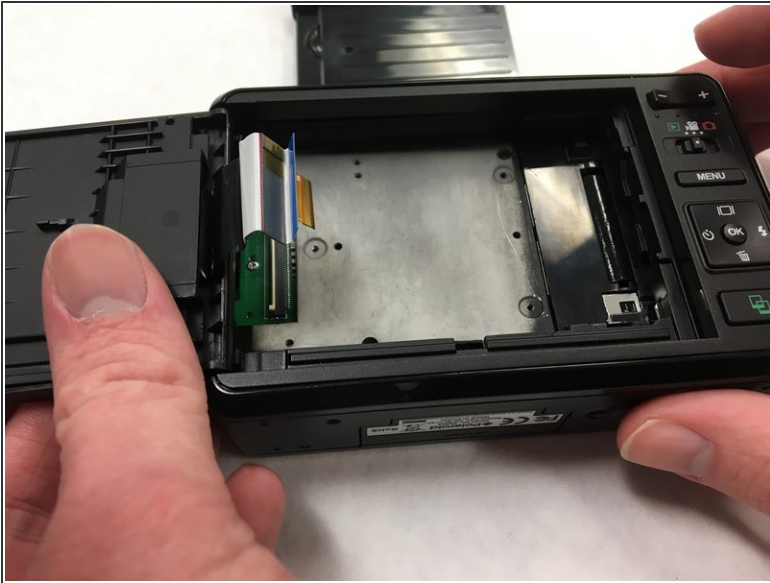
## Step 2



- Locate and remove the two 3.5 mm long screws on the inside tray.
- Screw head: JIS J00
- Remove the inside tray.

⚠ The screws are very small! Be careful not to strip or lose them.

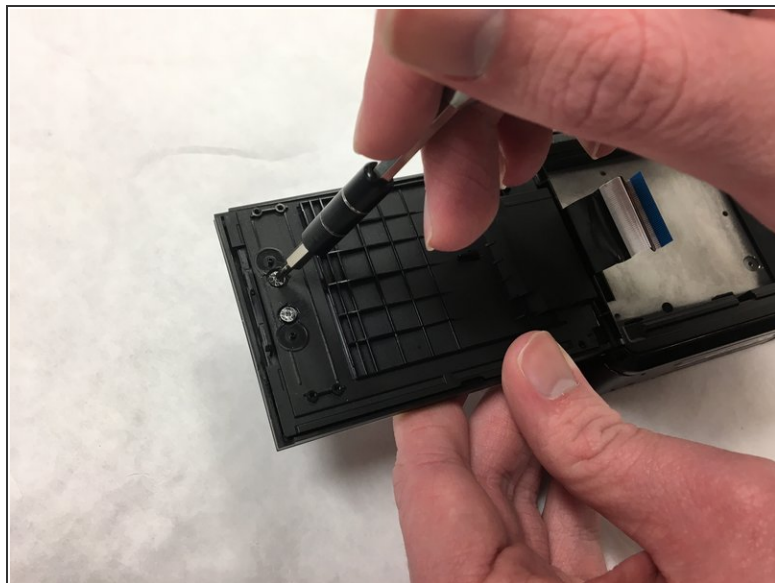
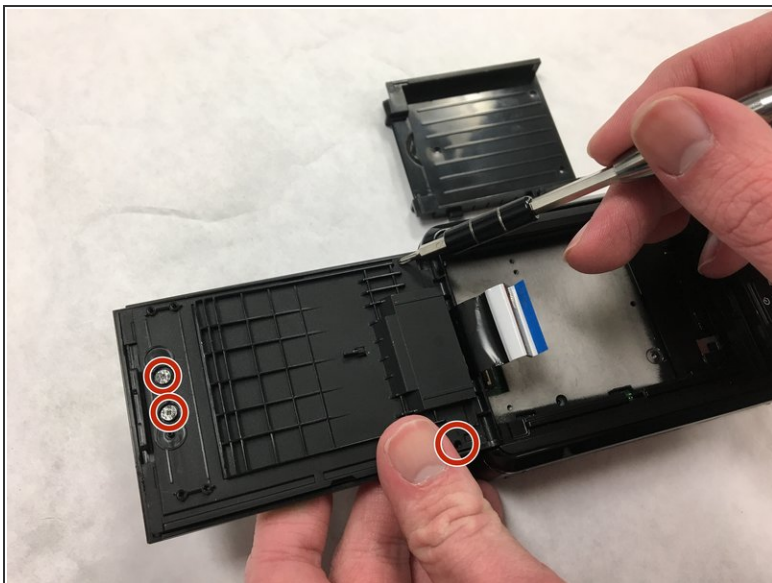
## Step 3



- Gently pull the ribbon away from the logic board. This will allow the screen to separate from the rest of the camera.



## Step 4



- Locate and remove four 3.5 mm long screws on the inside of the door.

- Screw head: JIS J00

⚠ The screws are very small! Be careful not to strip or lose them.

## Step 5



- Once the panel is removed, the malfunctioning screen will slide out and can be replaced.

To reassemble your device, follow these instructions in reverse order.