



Polaroid i533 Button Replacement

This guide will show how to replace the button that takes the pictures.

Written By: Terichael Office



INTRODUCTION

This guide will tell you exactly how to replace the buttons on your Polaroid i533 camera if they stop working properly. The only skill required to finish this guide are being able to use a screwdriver and to be able to work with small replacement parts.



TOOLS:

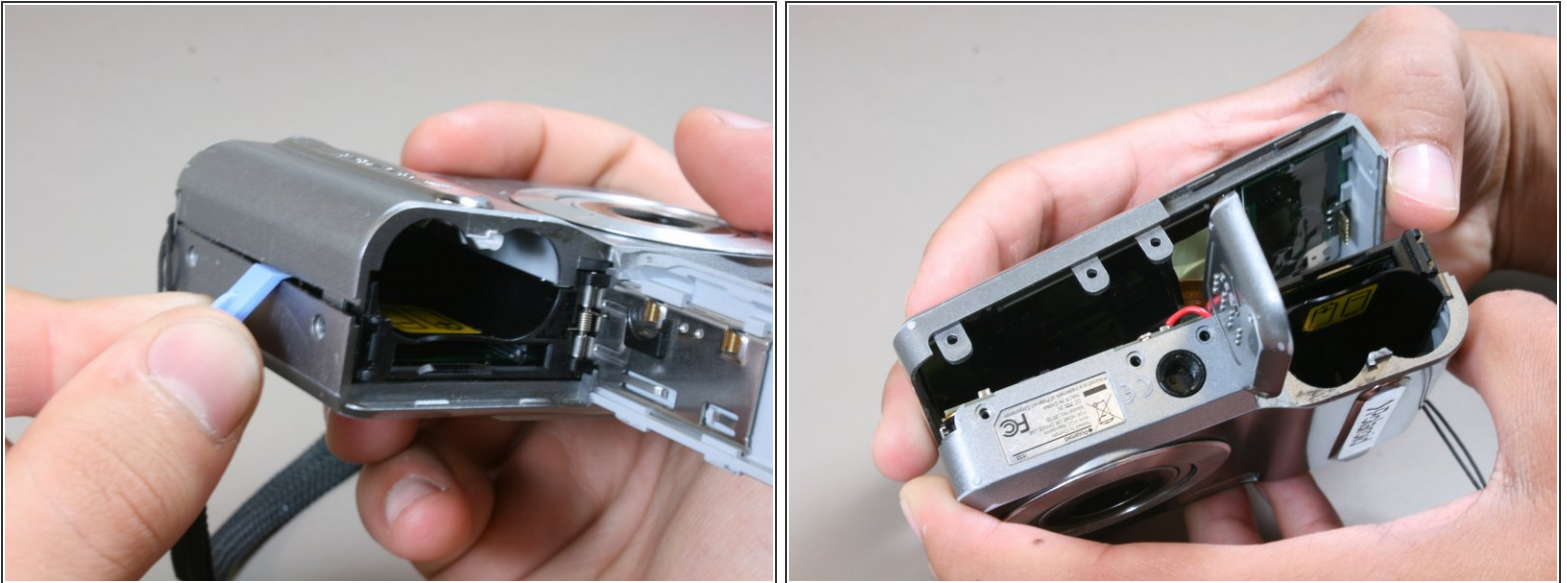
- [Phillips #00 Screwdriver](#) (1)
 - [iFixit Opening Tools](#) (1)
-

Step 1 — Button



- Using a #00 screw driver, remove all of the screws on the body of the camera. There are 9 screws total on the face of the camera
- ⓘ All of the screws used in the Polaroid i533 are the same size
- ⚠ Be sure to not misplace any screws as you will need them to put the camera back together.

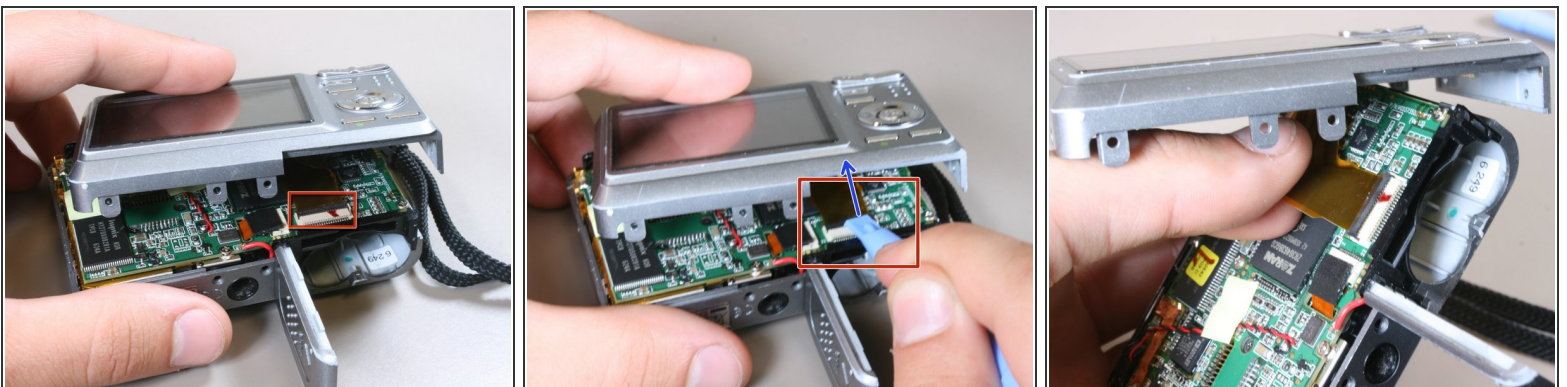
Step 2



- Slide open the battery door, then using the plastic opening tool, **slightly** open the side of the camera case.
- Gently pull apart the cover from the body of the camera.

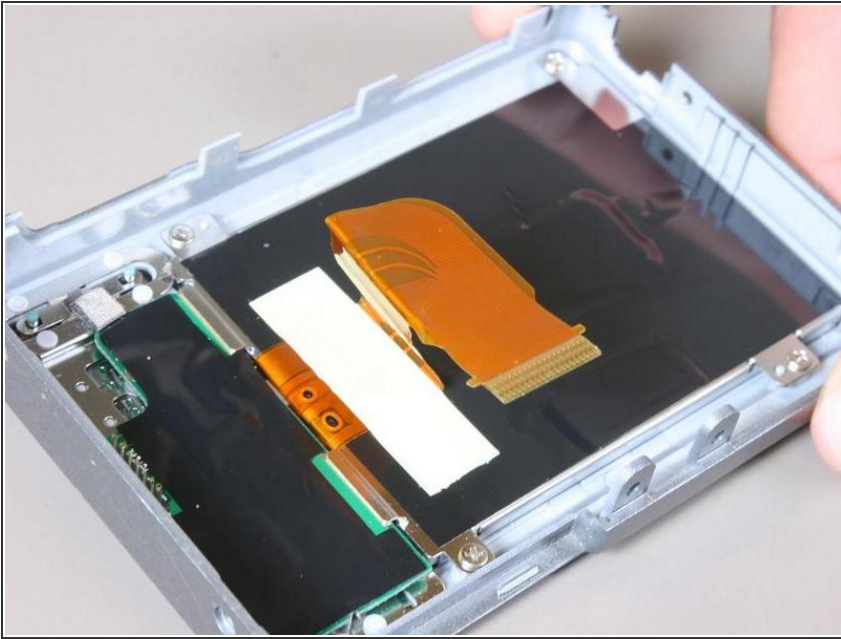
 **Do not pull the cover off completely because it is still attached to the logic board.**

Step 3



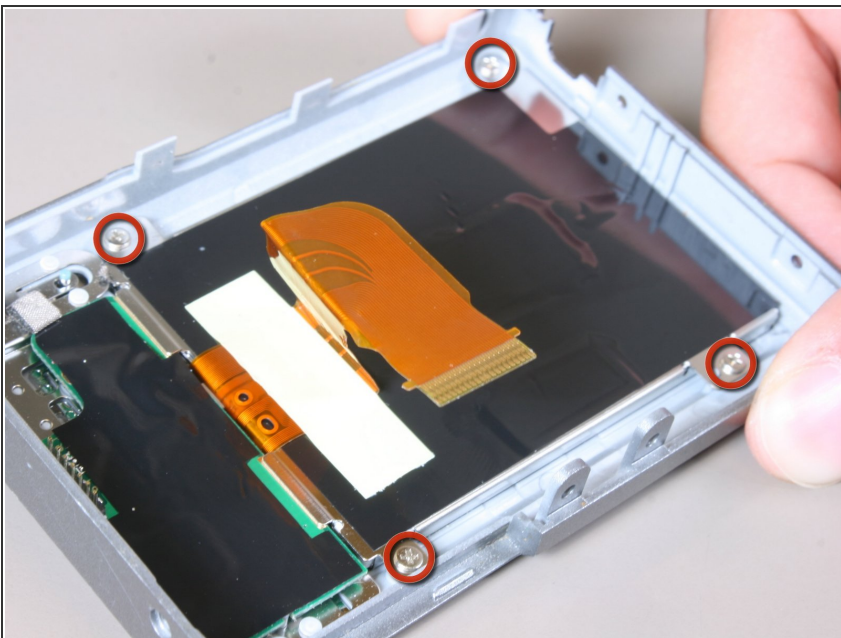
- Locate the black tab where the LCD screen ribbon is attached to the logic board.
- Using the plastic opening tool, flip the black tab towards the ribbon.
- Gently pull the ribbon away from the logic board.

Step 4



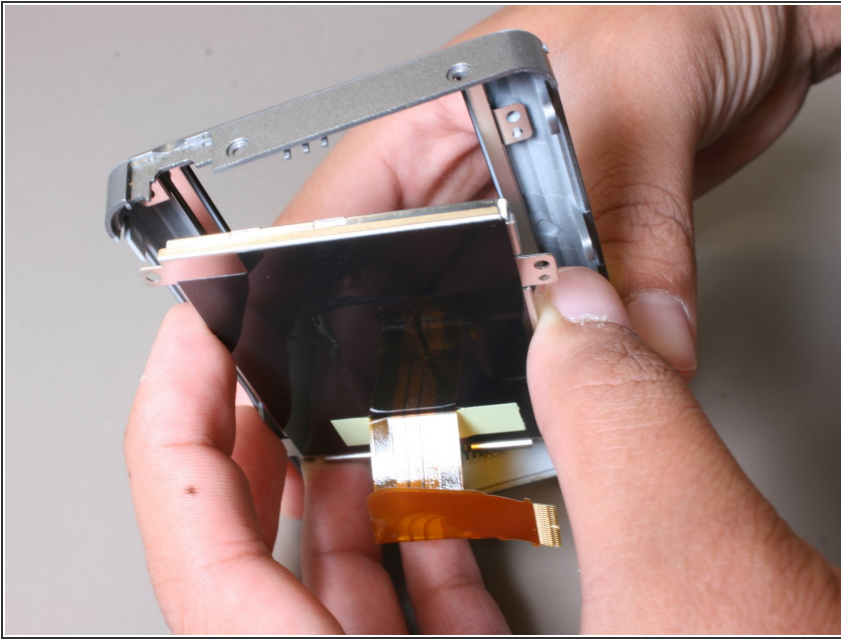
- The back half of the camera with the LCD screen should now be separated from the front casing.
- ⓘ If you are experiencing problems with your menu buttons, you must replace the entire back half of the outer case (Not including the screen). move on to step 5.
- ⓘ If you are experiencing problems **only** with your snap button (the one that you push to take pictures), skip ahead to step 7.

Step 5



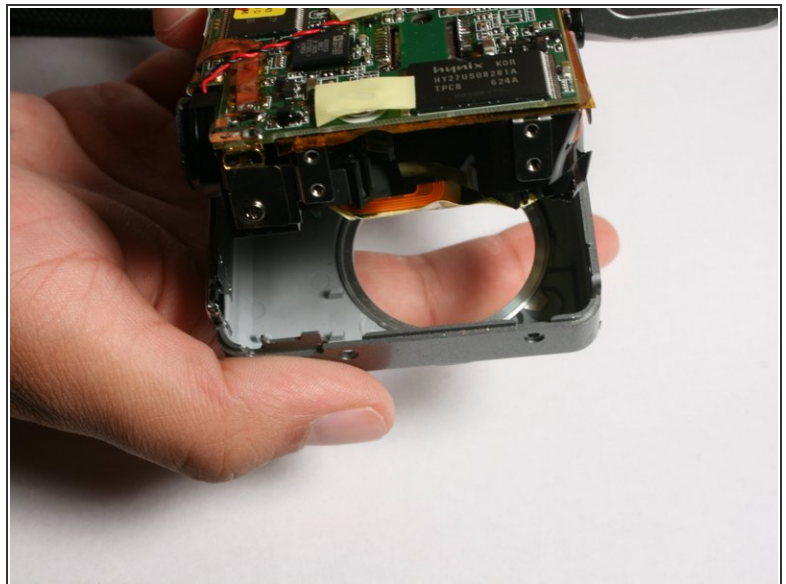
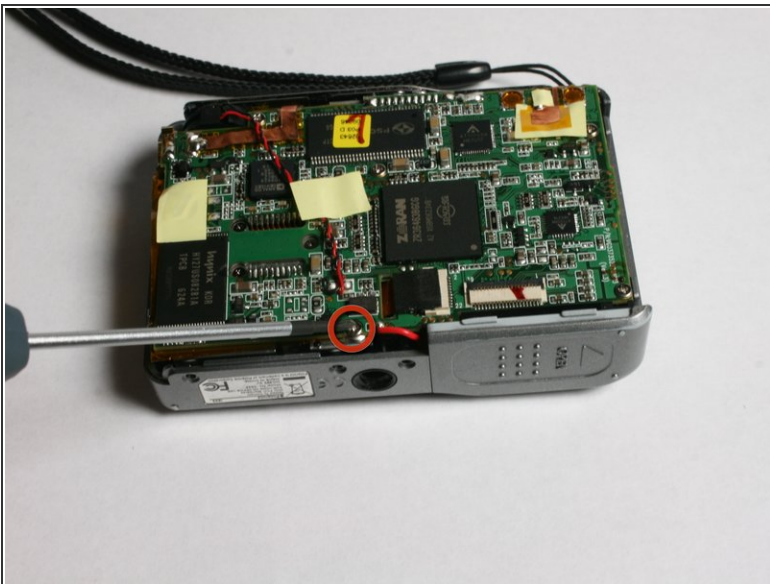
- Using a #00 screwdriver, remove the four screws located at each corner of the LCD screen.

Step 6



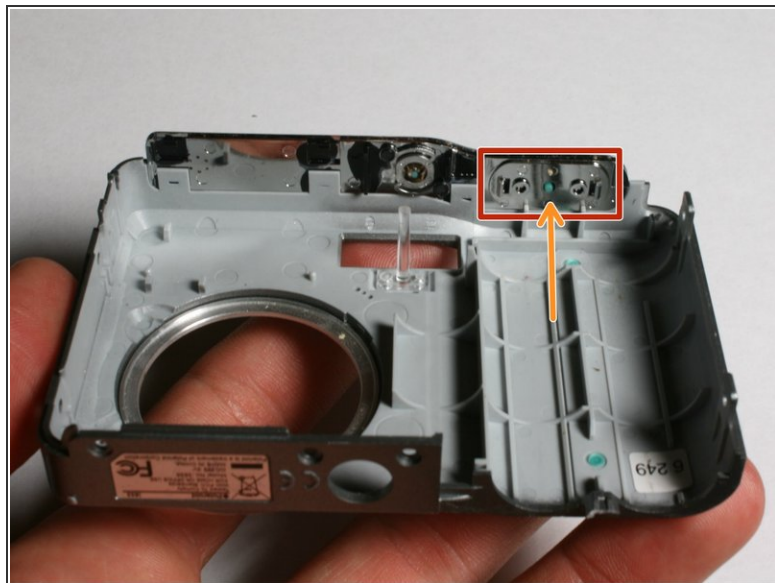
- Remove the LCD screen from the old casing.
- attach the LCD screen to the new casing using the screws removed in step 5.

Step 7



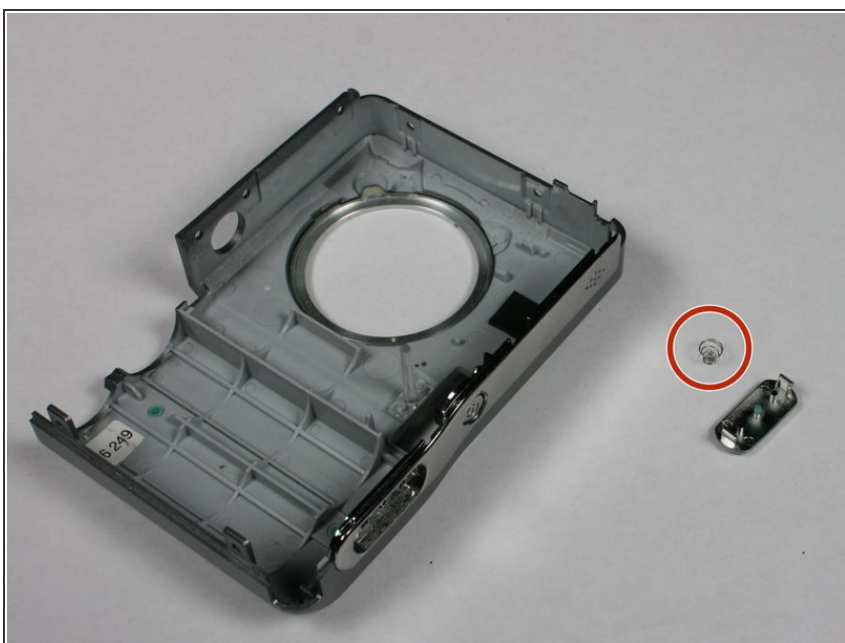
- Using a #00 screw driver, remove the screw on the bottom of the logic board just above the tripod attachment.
- Gently pull the front of the case away from the insides of the camera.

Step 8



- Locate the button that will be removed.
- To remove: gently push outward on the button from the inside of the casing.

Step 9



- Remove spring from bottom of broken button.
 - Remove and replace defective button.
- ⚠ Do not lose spring as it is needed for replacement button.

To reassemble your device, follow these instructions in reverse order.