



# Polk MagniFi Soundbar Bluetooth Cable Replacement

The bluetooth is not connecting even though you have troubleshotted.

Written By: D'Lana Pearce



## INTRODUCTION

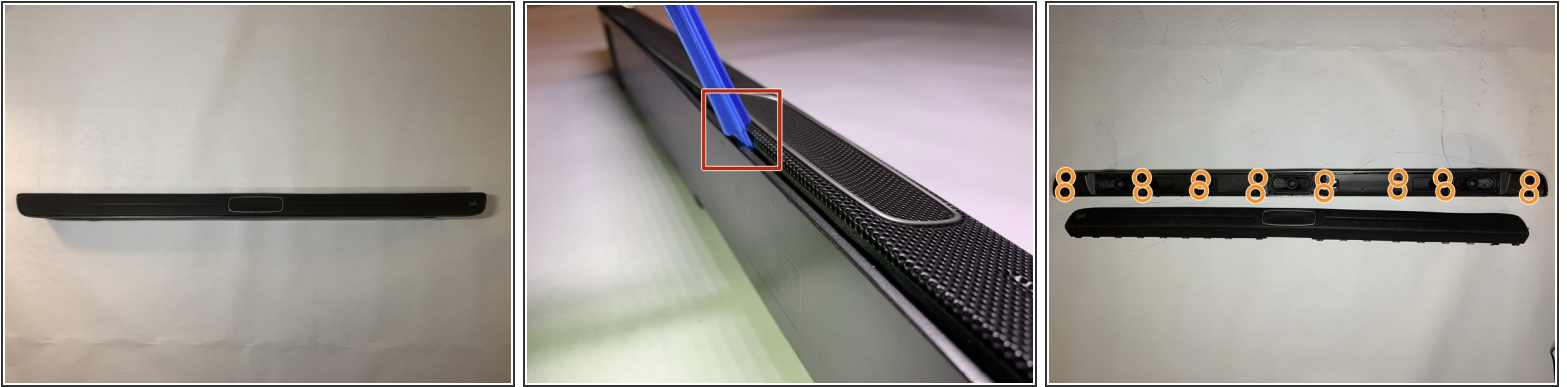
This guide will show you how to swap out the bluetooth sensor in your soundbar. Keep in mind this is a fragile cable that can easily be broken. It must be handled with care.

---

### TOOLS:

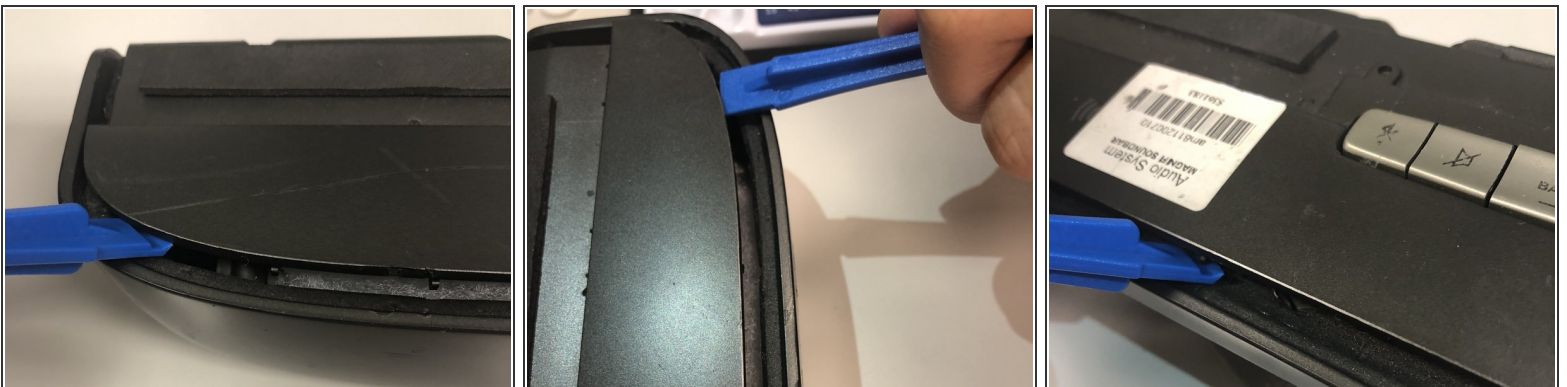
- [iFixit Opening Tools](#) (1)
  - [Mako Driver Kit - 64 Precision Bits](#) (1)
-

## Step 1 — Bluetooth Cable



- To reveal the control button, first, carefully remove the front cover of the Sound Bar.
  - Use the plastic iFixit opening tool to lift up the front surface. Insert the tool between the cover and the body to open it.
  - After the cover is fully removed, it will be able to see the interior speaker.
  - Carefully unscrew all 16 screws to release the panel.
- i** There are total 16 screws that secures the panel onto the cover. Each screw is approximately 1.50 centimeter.

## Step 2



- To remove the cover behind the control buttons, insert the iFixit opening tool between the cover and the body
- Push the opening tool along the edge of the cover to fully open it.

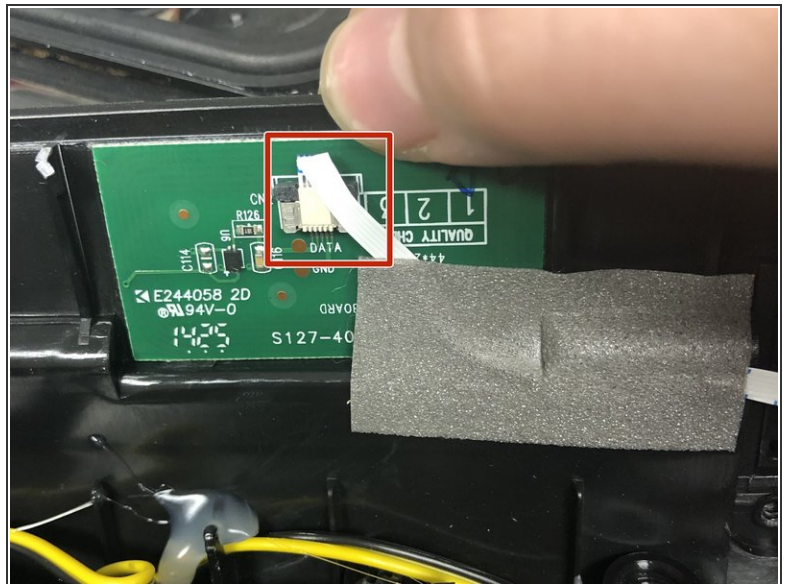
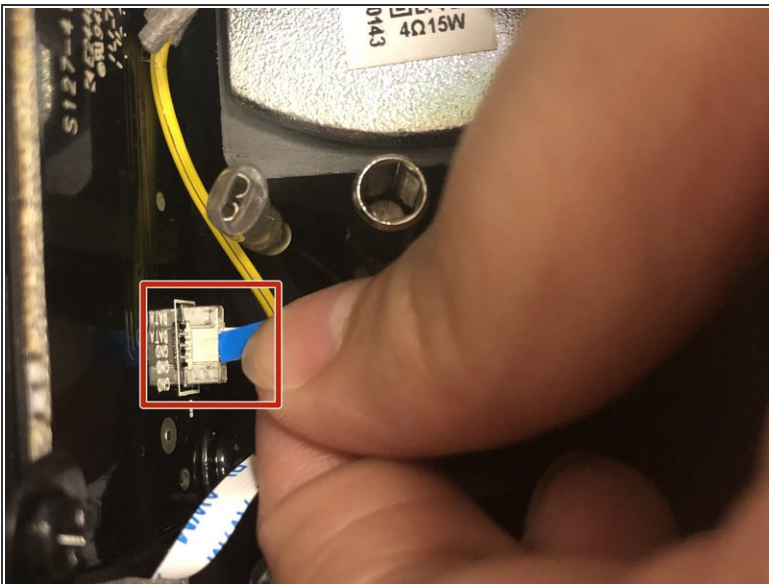


### Step 3



- Underneath the cover, there is a black panel screwed onto the cover with two sets of wires plugged into it.

### Step 4



- Grasp the wire firmly close to the base and pull straight out. Repeat this for the other end of the wire.

⚠ This wire is easily broken. Handle with care.

To reassemble your device, follow these instructions in reverse order.