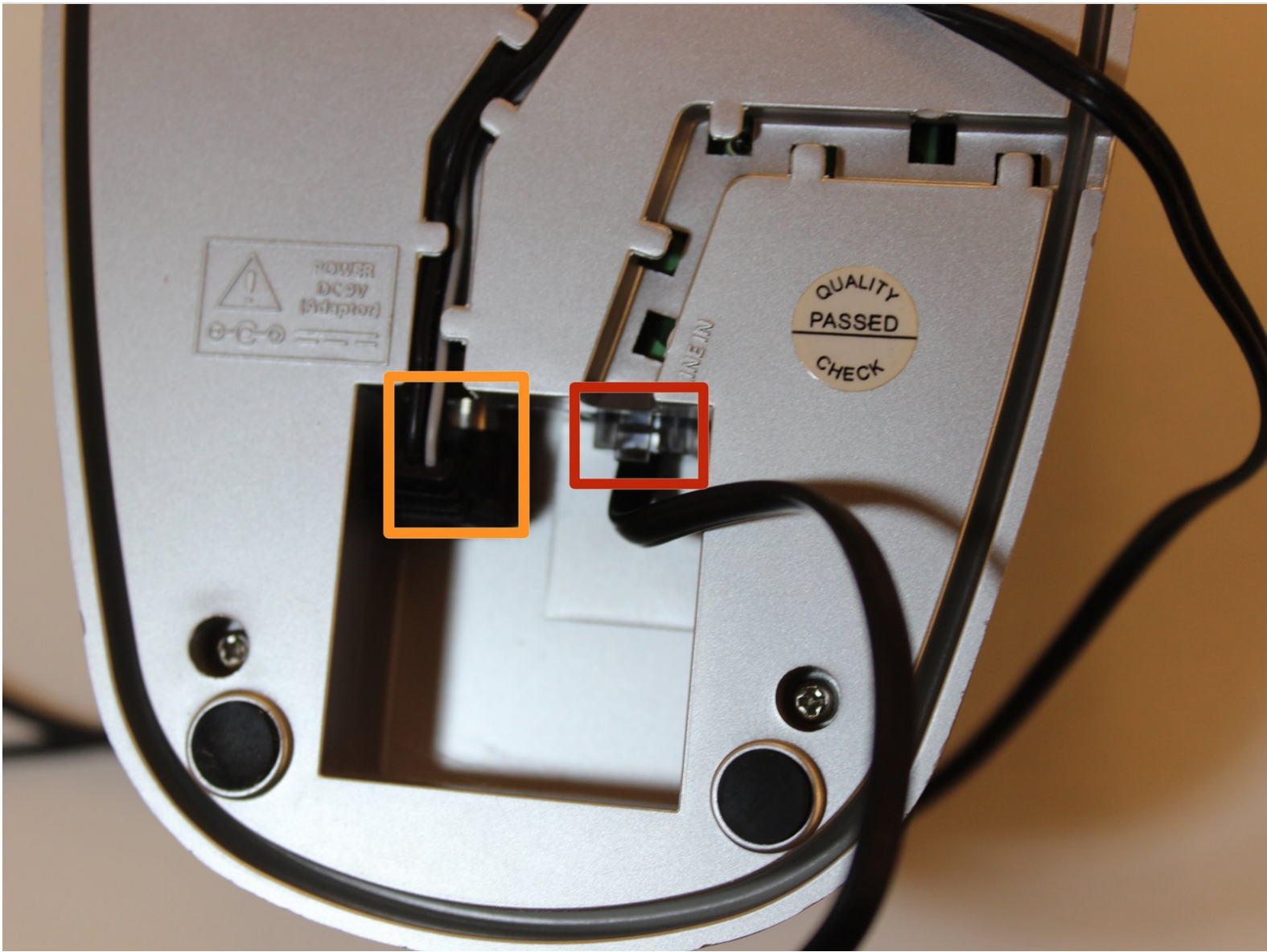




# Polyconcept 900-MHz Retro Cordless Telephone Device Cordless Phone Base Replacement

Disassemble the base of the Polyconcept 900-MHz cordless phone. This step will need to be taken before a number of other parts may be replaced.

Written By: Jay Gunter



---

# INTRODUCTION

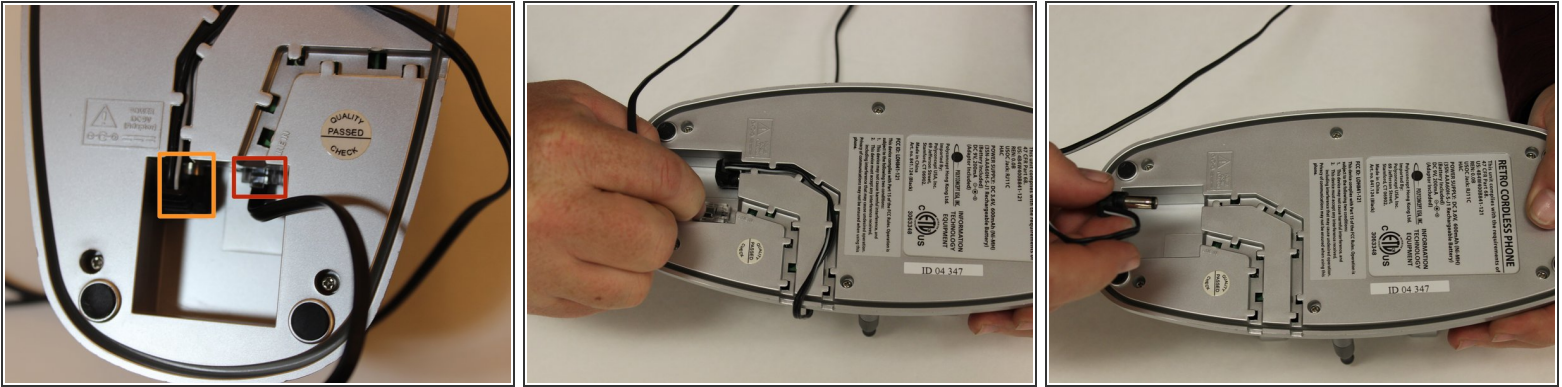
Prerequisite Only



## TOOLS:

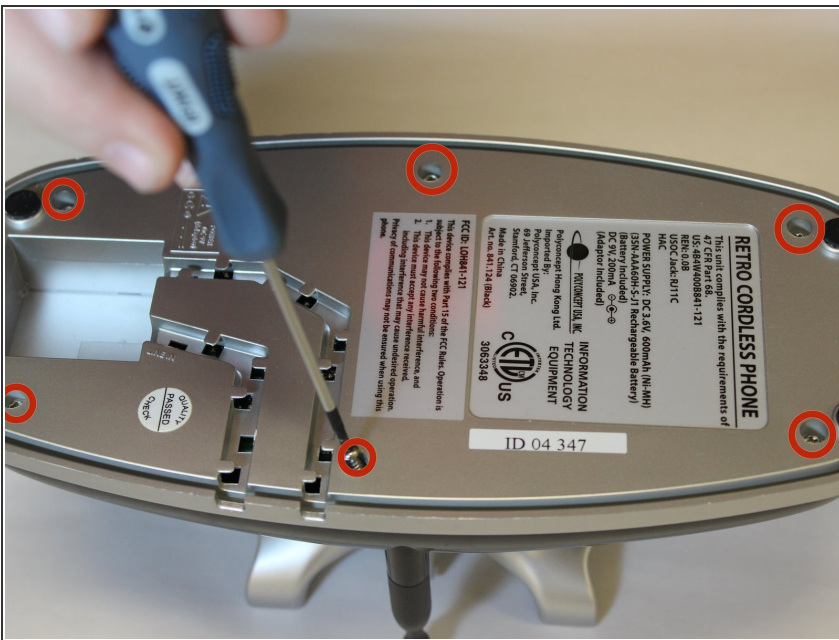
- [Phillips #00 Screwdriver](#) (1)
-

## Step 1 — Removing Power and Telephone Cords



- To disconnect the phone cord, squeeze the tab against the connector and pull the cord away from the telephone-line-in-jack.
- To disconnect the power cord, grasp the end and pull back and away until it is disconnected.
- Once disconnected remove each cord from its track.

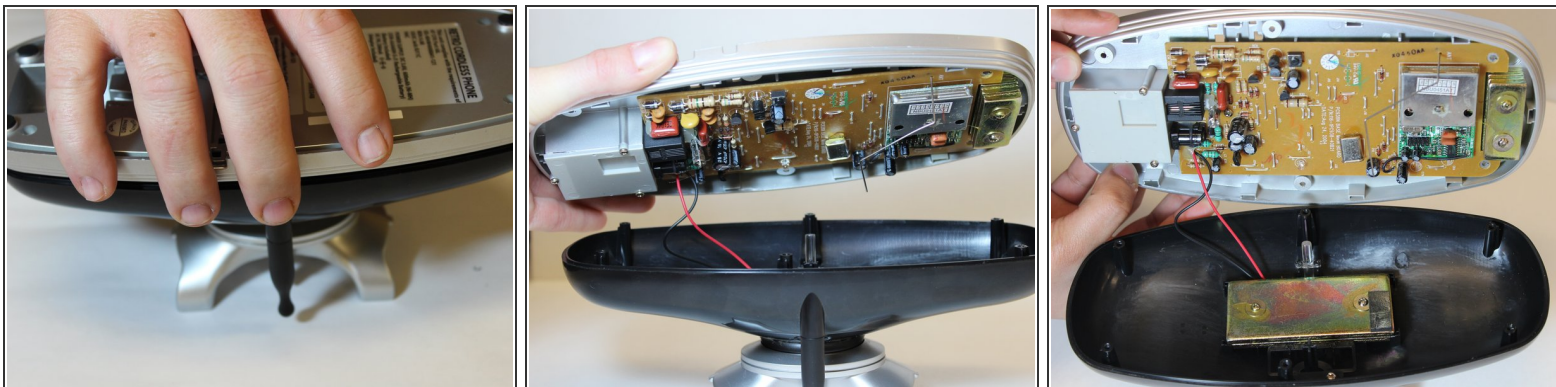
## Step 2 — Removing Screws to Base Plate




- Using a Phillips #00 screwdriver, remove the six 7mm screws from the base plate.



### Step 3 — Remove Bottom Plate from Base



- With the base turned upside down, grasp the edges of the base plate and gently lift from the rest of the base.

 Two wires lead from the motherboard to the charger plate, so the two parts cannot be completely separated without further steps.

To reassemble your device, follow these instructions in reverse order.