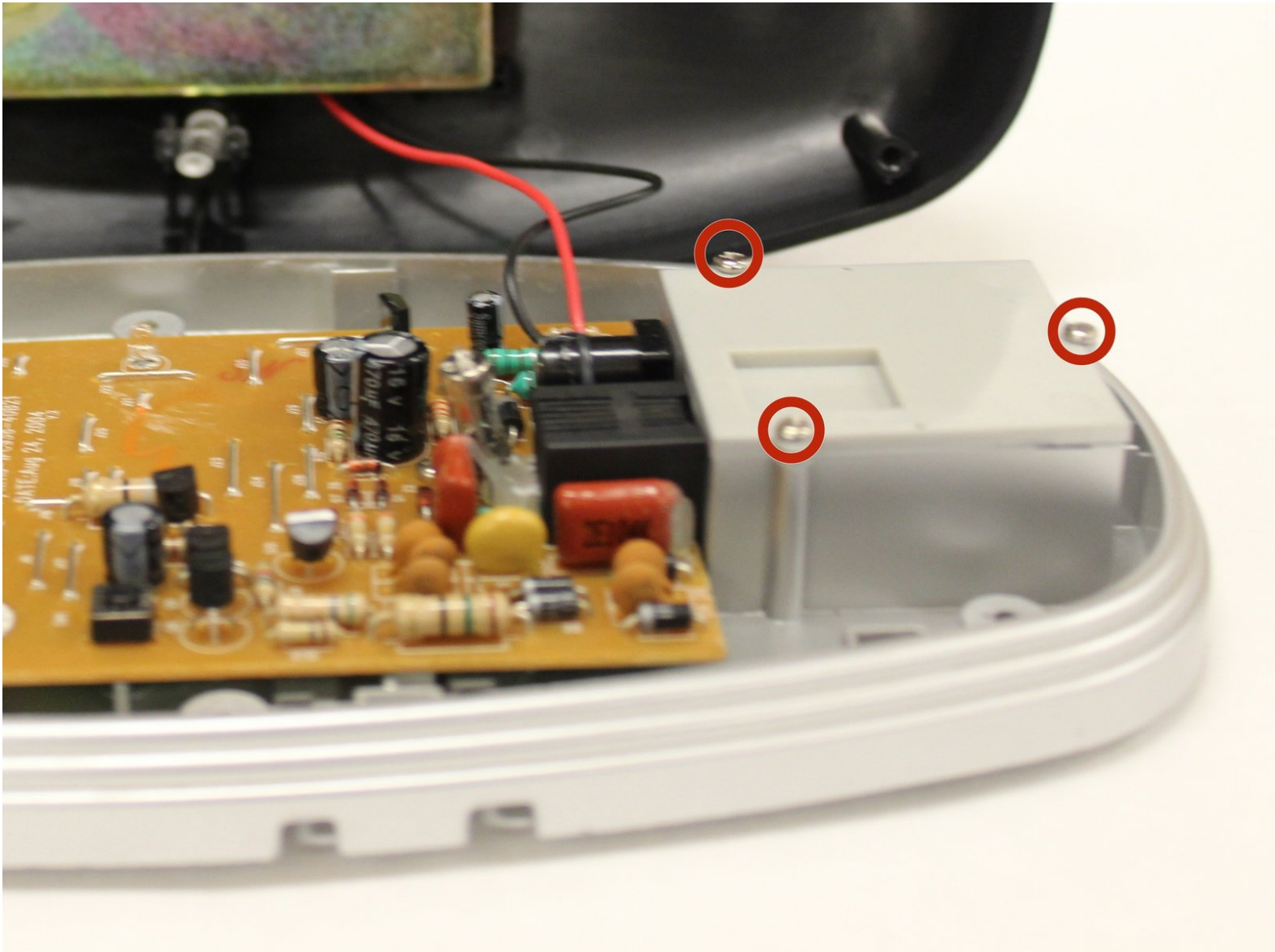




# Polyconcept 900-MHz Retro Cordless Telephone Device Motherboard Replacement

Replace the motherboard.

Written By: Jay Gunter



## INTRODUCTION

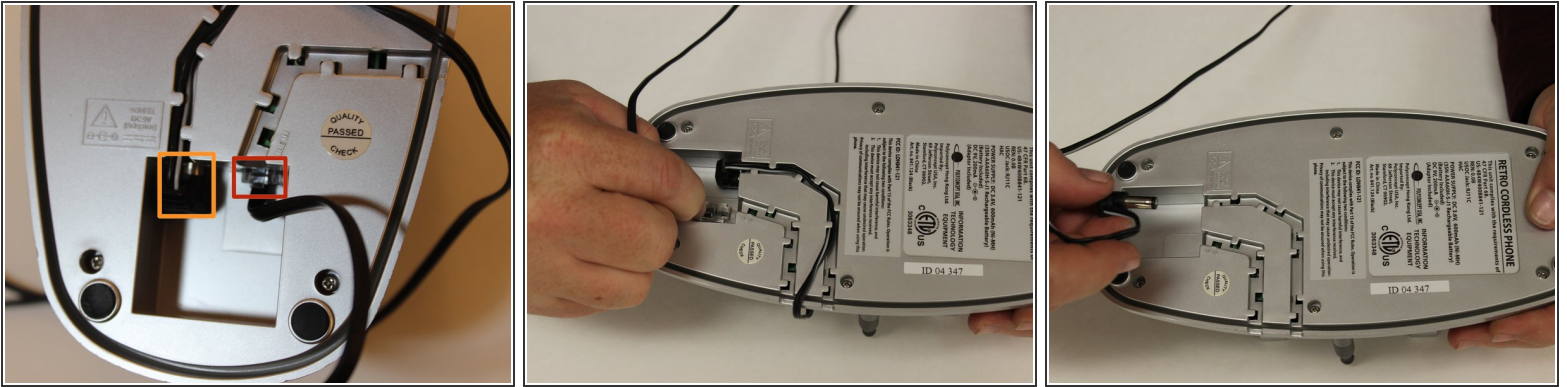
Removing the electronic motherboard from the base of the Polyconcept Retro Cordless Phone may be a necessity for repair or replacement. This guide will help you disconnect the motherboard from the rest of the device.



### TOOLS:

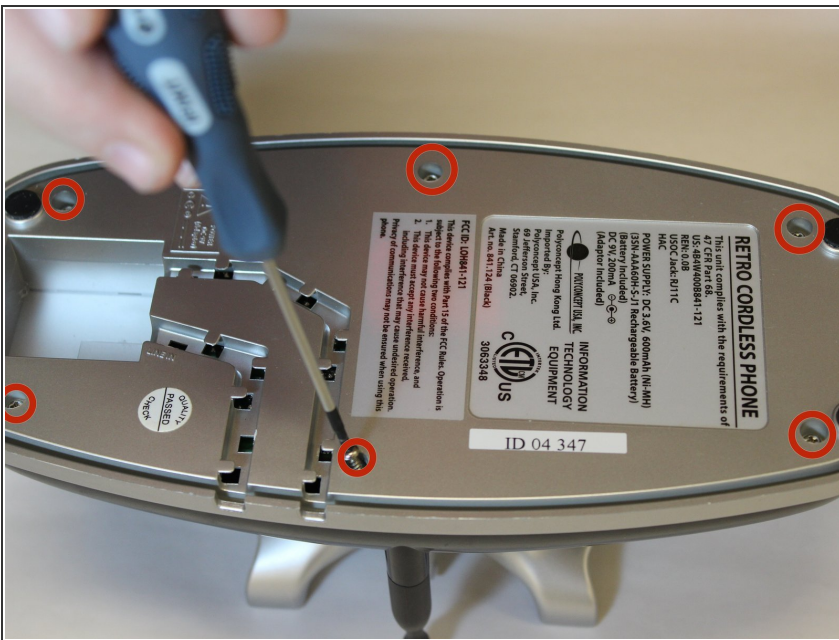
- [Spudger](#) (1)
  - [Phillips #00 Screwdriver](#) (1)
  - [Soldering Iron](#) (1)
-

## Step 1 — Removing Power and Telephone Cords



- To disconnect the phone cord, squeeze the tab against the connector and pull the cord away from the telephone-line-in-jack.
- To disconnect the power cord, grasp the end and pull back and away until it is disconnected.
- Once disconnected remove each cord from its track.

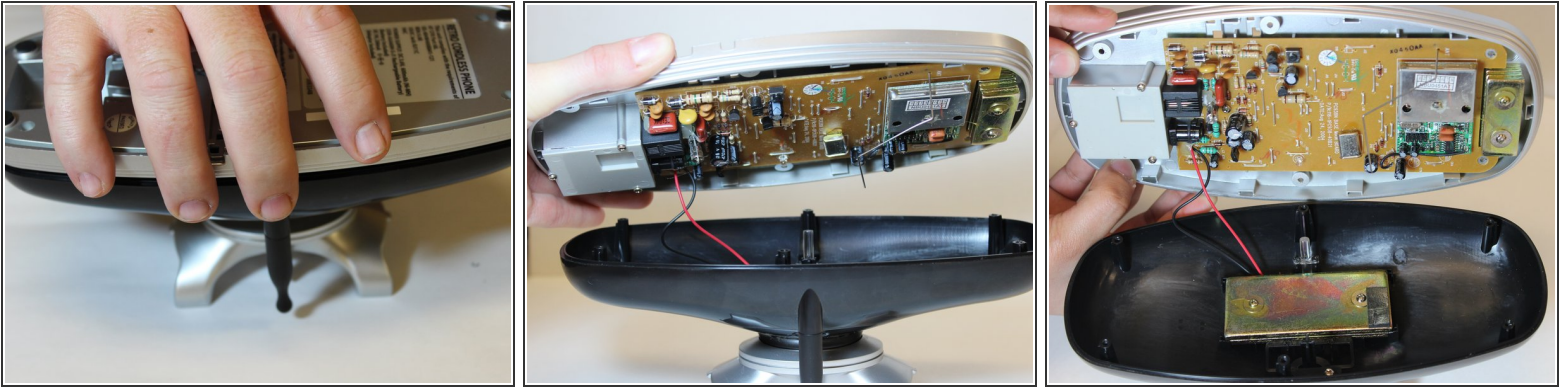
## Step 2 — Removing Screws to Base Plate



- Using a Phillips #00 screwdriver, remove the six 7mm screws from the base plate.



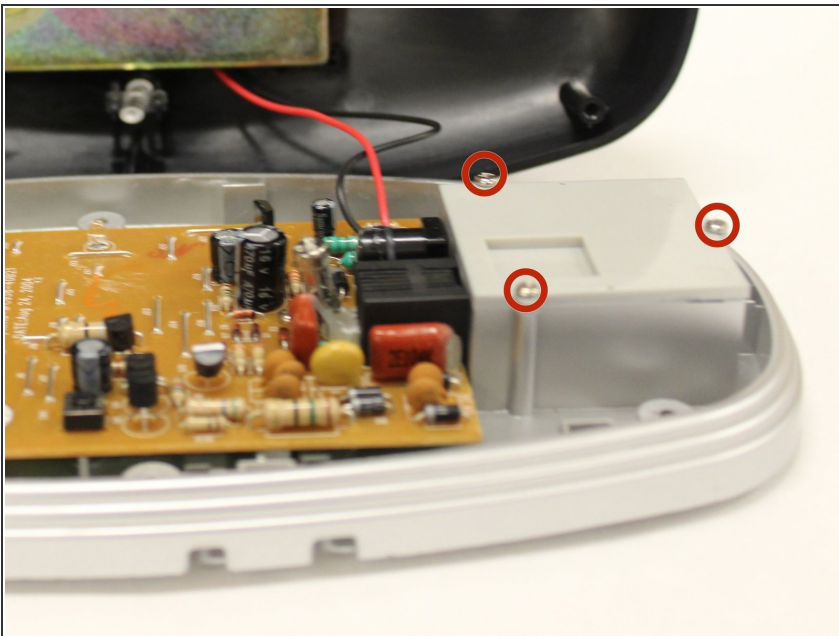
### Step 3 — Remove Bottom Plate from Base



- With the base turned upside down, grasp the edges of the base plate and gently lift from the rest of the base.

⚠ Two wires lead from the motherboard to the charger plate, so the two parts cannot be completely separated without further steps.

### Step 4 — Removing Screws



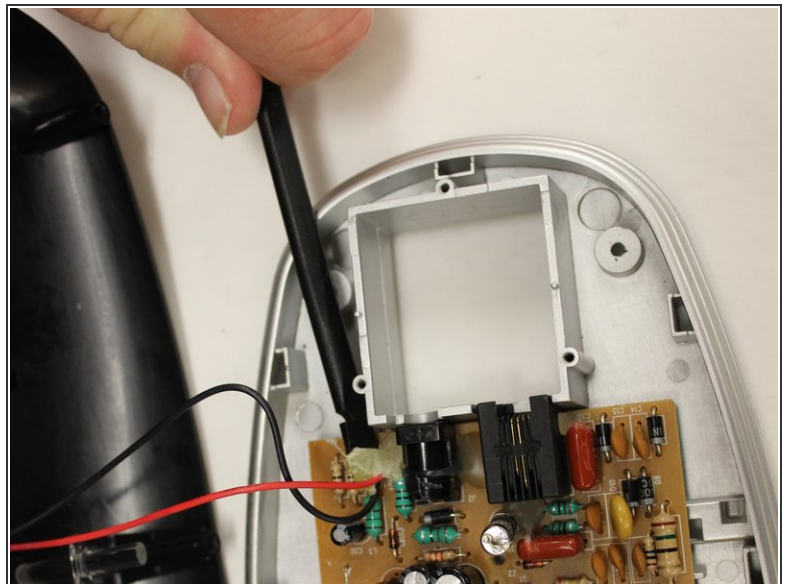
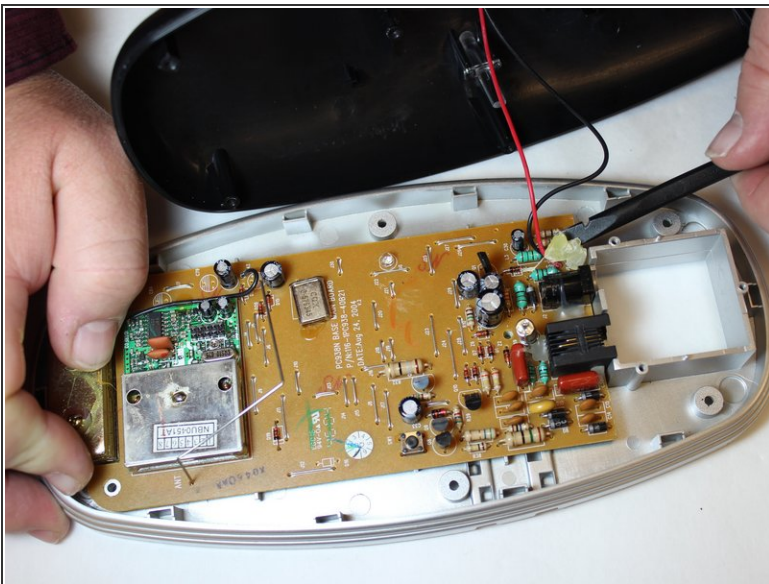
- Use a Phillips #00 screwdriver to remove the three 6mm screws from the phone and power jack cover plate.
- Lift the phone and power jack cover plate away from the motherboard.

## Step 5 — Removing the Motherboard Screw



- Use a Philips #00 screwdriver to remove the single 6mm screw from the motherboard.

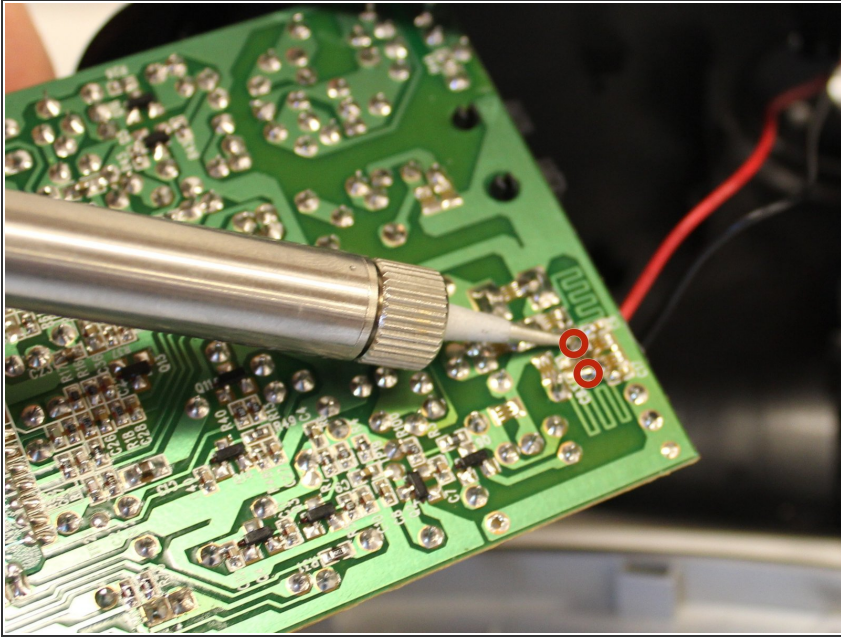
## Step 6 — Removing Glue Covering for Wire Connections



- Use the spudger tool to carefully scrape the glue off of the connection points of both the black and red wires.



## Step 7 — Desoldering Wire Connections



- Gently lift the motherboard away from the base plate and flip over.
- Use the soldering station to desolder the wire connections.
- ① For further instructions on using the soldering station [click here](#).

To reassemble your device, follow these instructions in reverse order.