



Pool Cue Tip Replacement

This guide shows the steps for how to replace the tip on the end of a pool cue.

Written By: Carson Myers



INTRODUCTION

We will teach you how to replace a pool cue tip using a box cutter, glue, nail polish remover, and a small strip of sandpaper.



PARTS:

- [New Pool Cue Tip](#) (1)
-

Step 1 — Pool Cue Tip



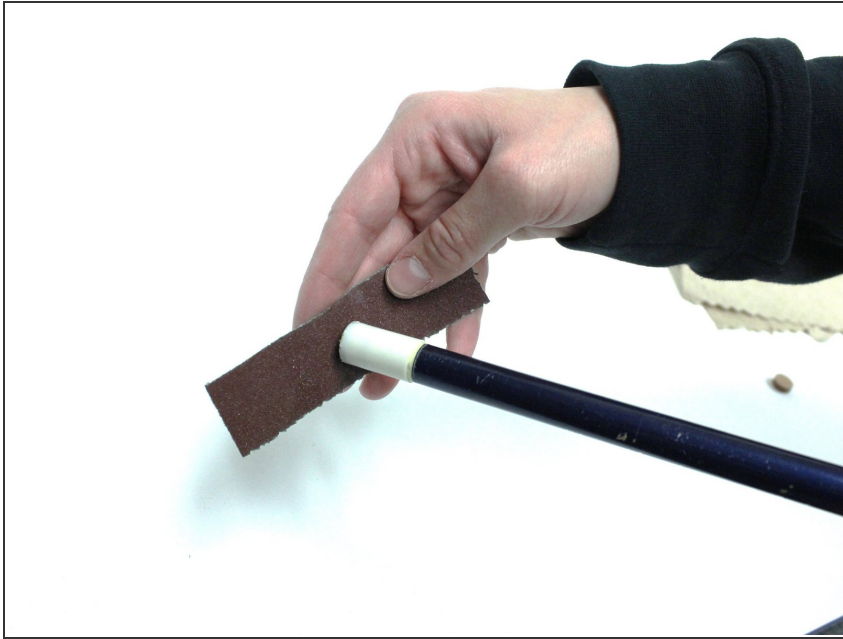
- Remove the old, worn tip using a box cutter. Make sure that the old tip is completely removed.

Step 2



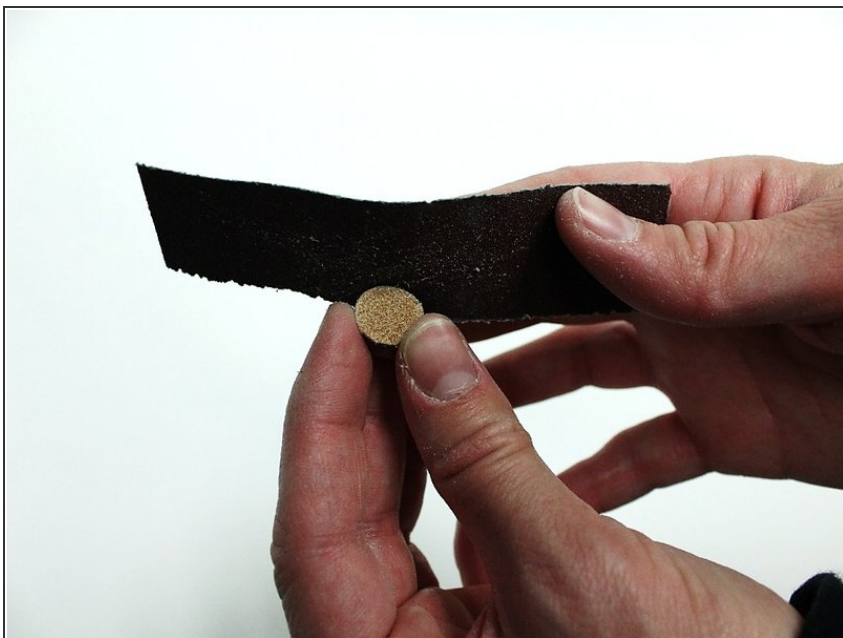
- Remove any old glue or gunk using a napkin soaked with nail polish remover.

Step 3



- Sand down the end of the pool stick using the sand paper until the surface is flat and smooth.

Step 4



- Use the sandpaper to file the edges and backside of the new tip.

Step 5



- Glue the sanded side of the new side of the new tip to the end of the pool tip.

Step 6



- Place the new tip on the end of the pool cue. Hold it firmly in place until it sticks.

Step 7



- Congratulations! You are now ready to continue using your pool stick.

To reassemble your device, follow these instructions in reverse order.