



Porch Screen Door Screen Replacement

This guide will show you how to replace a damaged porch screen for a new one.

Written By: Eskarle Liscano



INTRODUCTION

My method attempts to use a limited amount of tools, which you can find at your nearest hardware store, or maybe, in your tool box at home. I will show you what the damaged screen looks like, and every step after that, until the new one is in place. The steps will be easy to follow, and it should be a quick and beneficial fix.



TOOLS:

- [Screen Spline](#) (1)
- [Spline Mouse](#) (1)
- [Fiberglass Screening](#) (1)
- [Utility Knife](#) (1)
- [Utility Scissors](#) (1)
- [Painter's Tape](#) (1)

Step 1 — Screen



- Start by finding the damaged parts of the screen.

Step 2



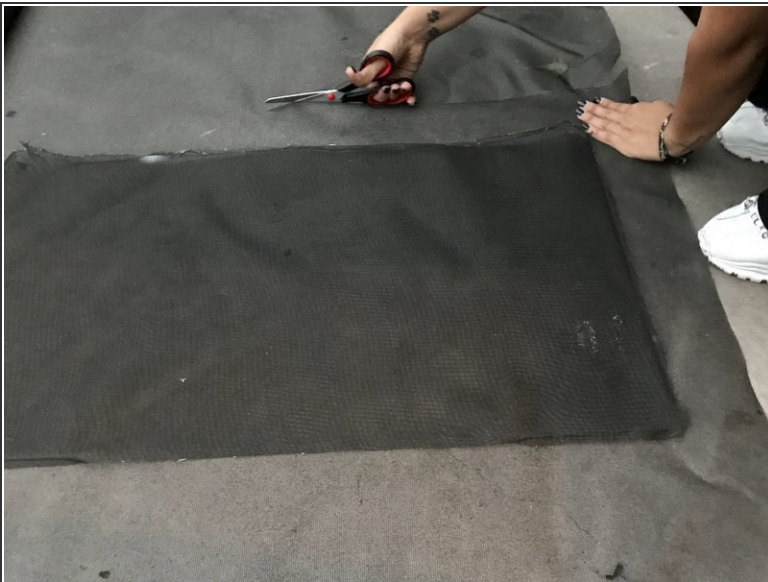
- Remove the spline first, then rip out the screen.

Step 3



- Use the old screen as a pattern to cut out a new one.
- ⓘ Make sure the new piece is at least 2-3 inches bigger on each side for better fitting.
- ⓘ The old screen measures 32"x 20".

Step 4



- Use scissors to cut out the new screen. Make sure the new piece you cut out is 3-4 inches longer on each side.
- ⓘ The new cutout screen measures 34"x22".

Step 5



- Put up the new cutout screen with tape to hold it in place.

Step 6



- Use spline mouse to start rolling down the spline.

Step 7



- Cut off the remaining spline on the corners.

Step 8



- Cut off the remaining screen on each side.

Step 9



- Here you have a new porch door screen.

To reassemble your device, follow these instructions in reverse order.