



Portable Luminaries Lamp Teardown

The Portable Luminaries Lamp teardown involves the model #53-011102 lamp. The teardown breaks down the crucial system components so the lamp subsystems may receive easier and more thorough analysis.

Written By: Brenden



INTRODUCTION

This teardown provides clarification regarding the different subsystems within a Portable Luminaries lamp and how the subsystems work together resulting in a functioning lamp. The guide proceeds step by step through each disassembly process providing insight regarding the different appearing subsystems and their functional relevance. Each step details the specific disassembly process and explains the corresponding image's systems.



TOOLS:

- [Phillips #0 Screwdriver](#) (1)
-

Step 1 — Portable Luminaries Lamp Teardown



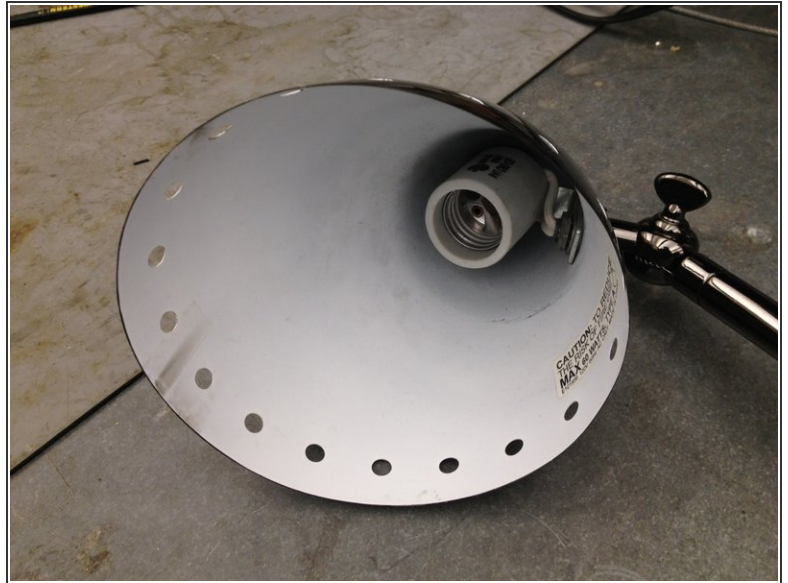
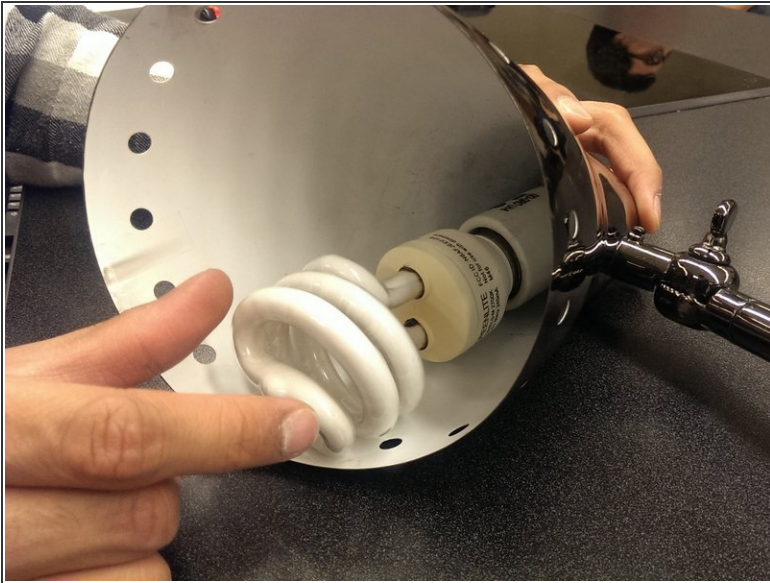
- The attached picture displays the lamp before the teardown.

Step 2



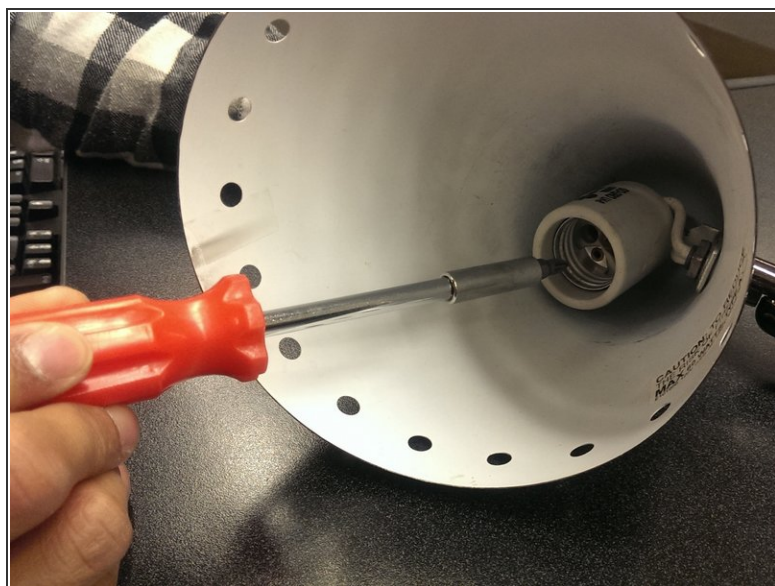
- Remove the power cord from the wall socket outlet
- ⚠ Make sure to follow this step. There may be a danger of severe electric shock if you proceed to tear down the device without removing the plug

Step 3



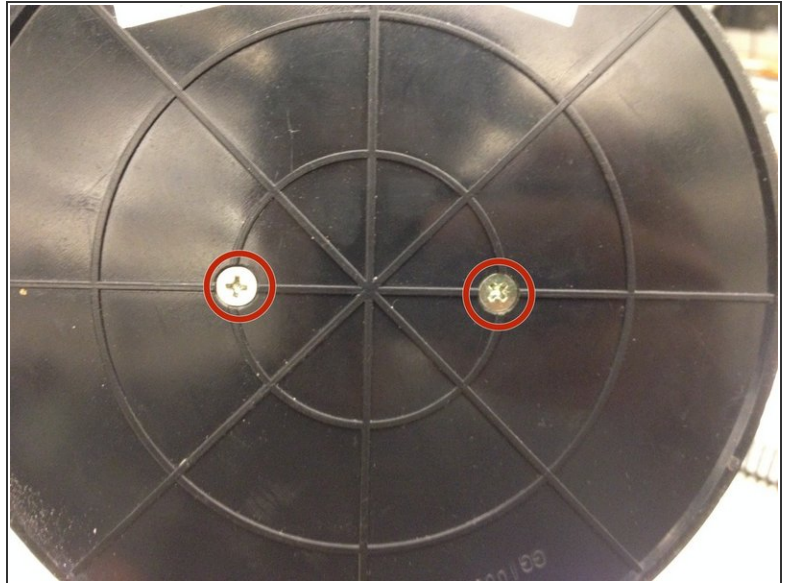
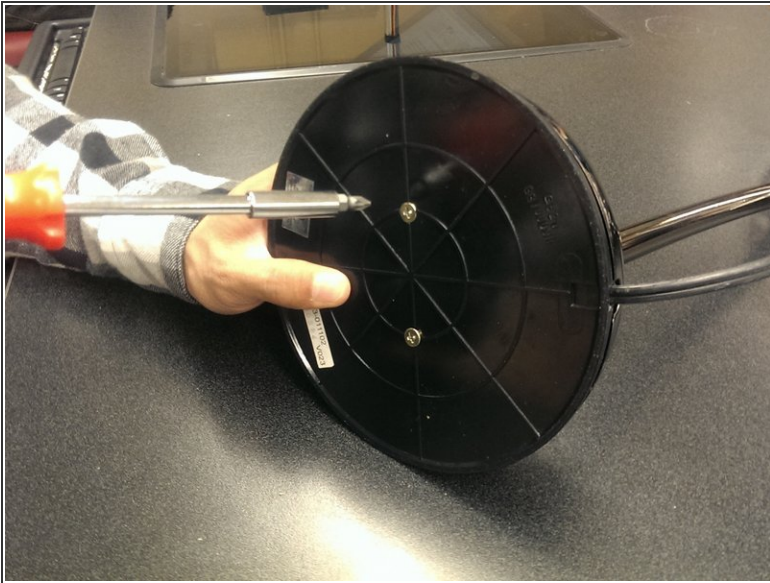
- Place the lamp gently on its side on a flat surface
- Twist the lightbulb counter-clockwise to remove it from the lamp's head.
- After lightbulb removal, the component attaching the lightbulb and lamp's head is exposed.

Step 4



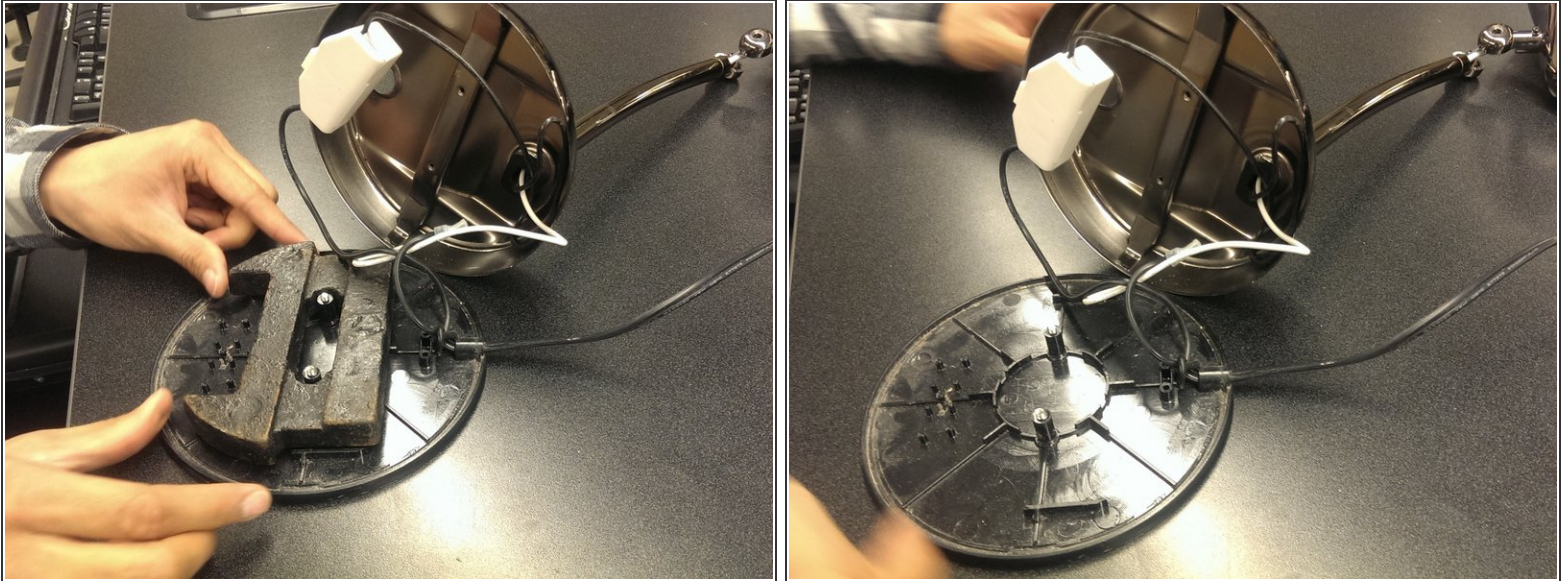
- Next, the light bulb housing can be detached from the lamp head
- Using the Philips screw driver, unscrew the two 5mm diameter screws within the light bulb housing

Step 5



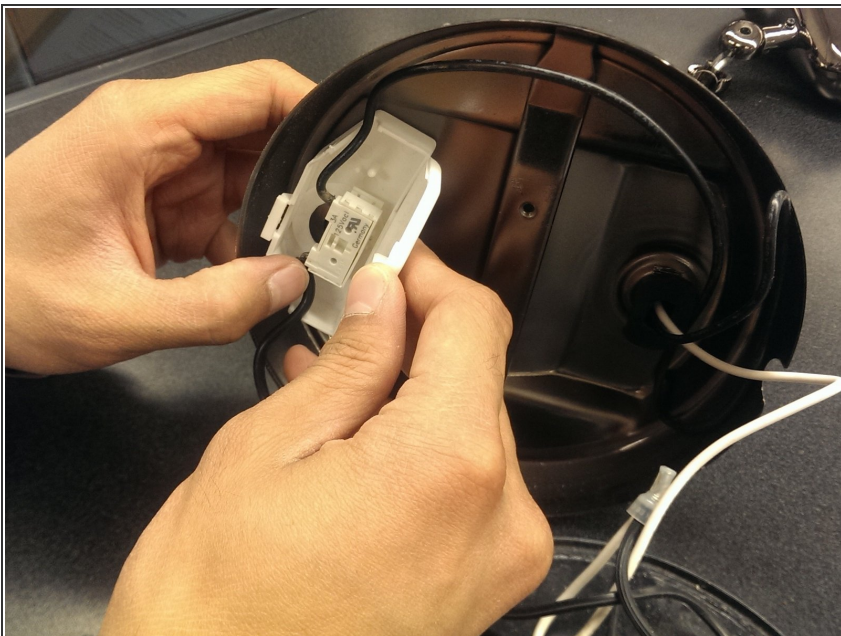
- Keep the lamp on its side
- The bottom is now exposed and two screws are visible
- Using the Philips Screwdriver, unscrew the two 7mm gold screws from the bottom of the base

Step 6



- Once the screws attached to the base are removed, the base's bottom lid detaches from the lamp.
- Within the base resides two components: the lamp's weight and the switch.
- The weight sits on the bottom base lid, so it separates without the use of additional tools.

Step 7



- The white container holding the switch does not need tools for opening.
- The switch container is clipped shut and opens by unlatching the tab

To reassemble your device, follow these instructions in reverse order.