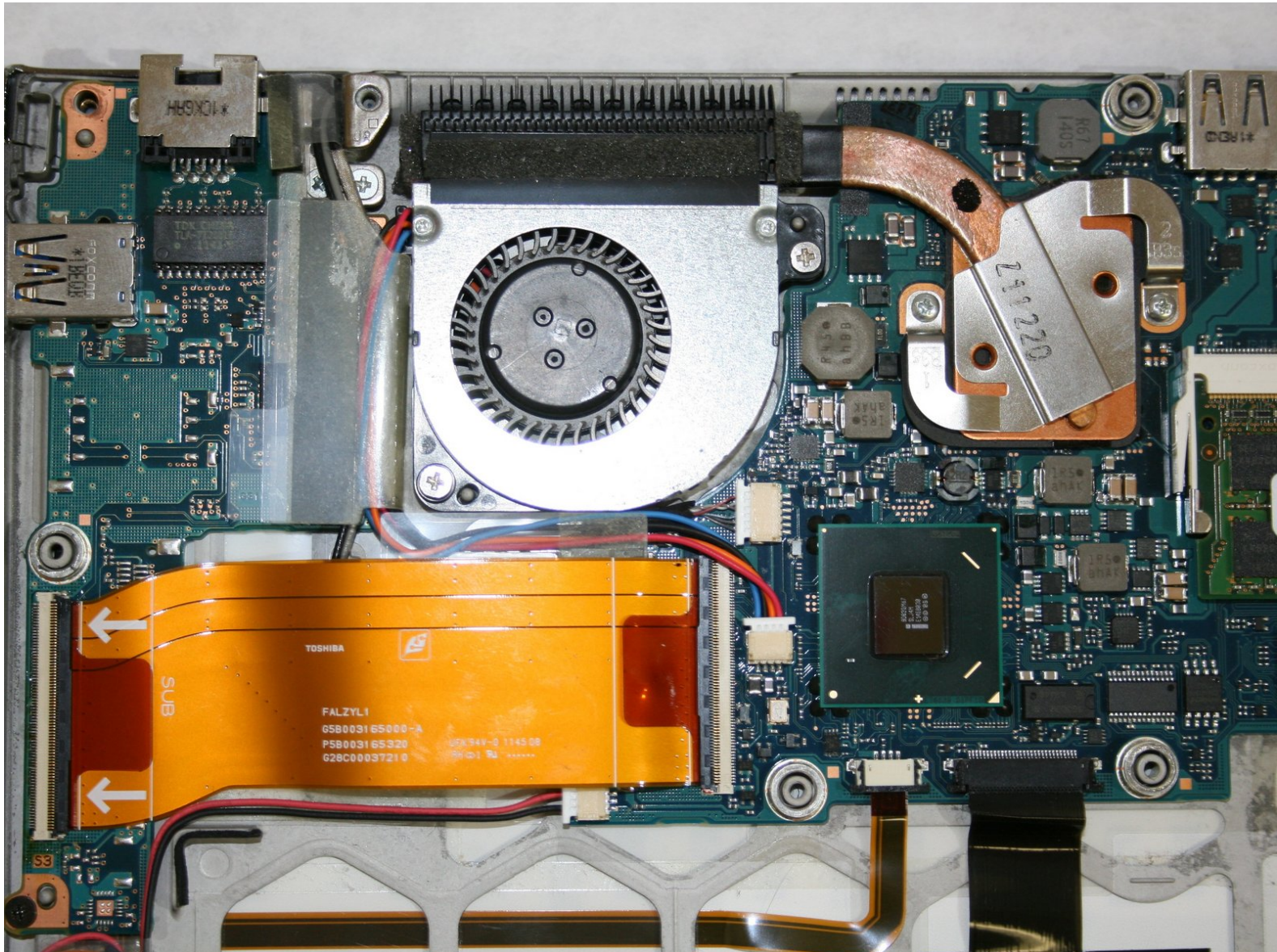




Portege Z830-S8302 Internal Cooling Fan Replacement

How to replace a Toshiba Portege Z830-S8302 fan.

Written By: Tanner Krygier



INTRODUCTION

Before beginning this repair guide, make sure the laptop is powered off and that it is not plugged into any chargers. If laptop was just in use, be cautious of pieces inside the device as they may be hot to touch.



TOOLS:

- [Phillips #0 Screwdriver](#) (1)
 - [Metal Spudger](#) (1)
 - [Spudger](#) (1)
 - [T7 Torx Screwdriver](#) (1)
-

Step 1 — Internal Cooling Fan



- Flip the laptop over, with screen facing down to reveal bottom panel.
- Remove thirteen 1.4mm Phillips #0 screws around the border of the frame.

Step 2



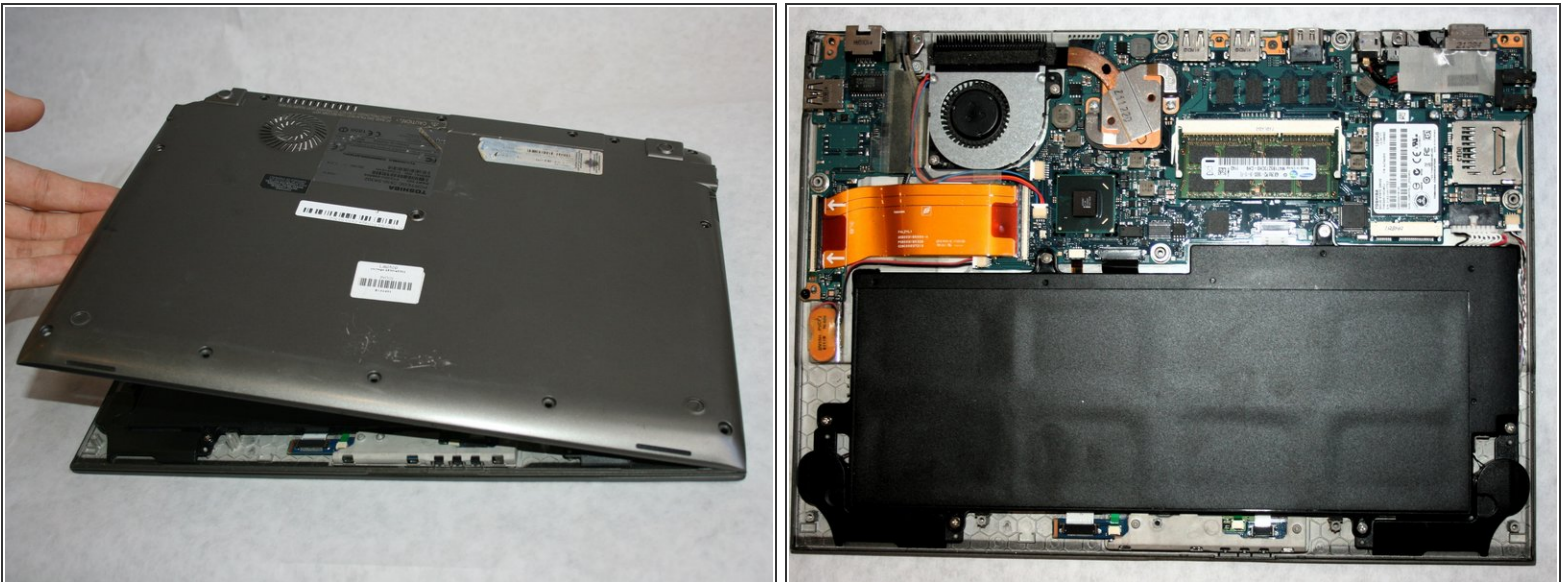
- Using the metal spudger, remove the rubber fitting in middle of back panel to reveal hidden screw.
- Use a Torx T7 bit screwdriver to remove screw.

Step 3



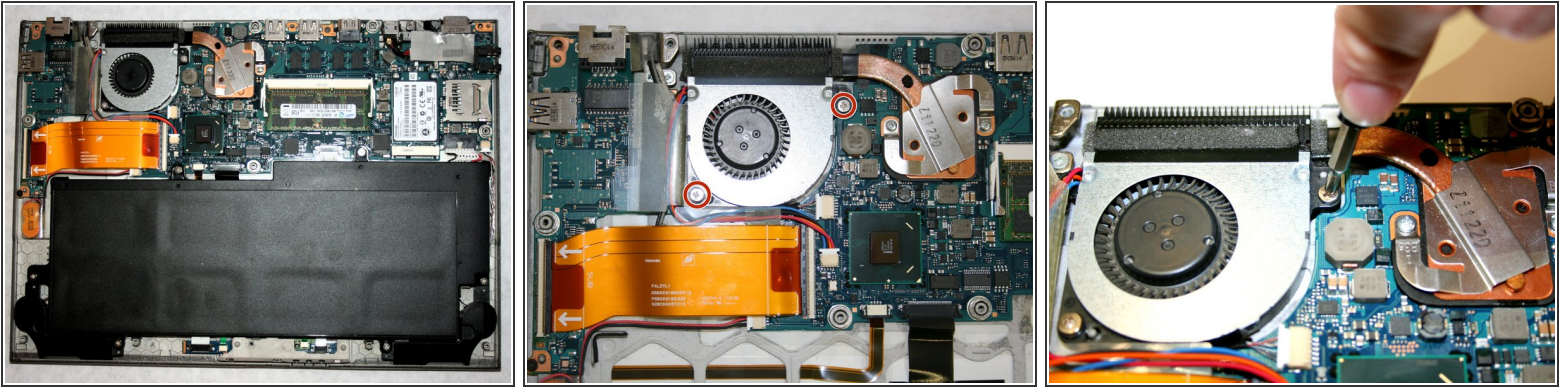
- Remove the SD card in top right hand corner of the device, next to the headphone ports.
- Push in the SD card then pull out completely to remove from slot.
- ⓘ This will help in the removal of backplate.

Step 4



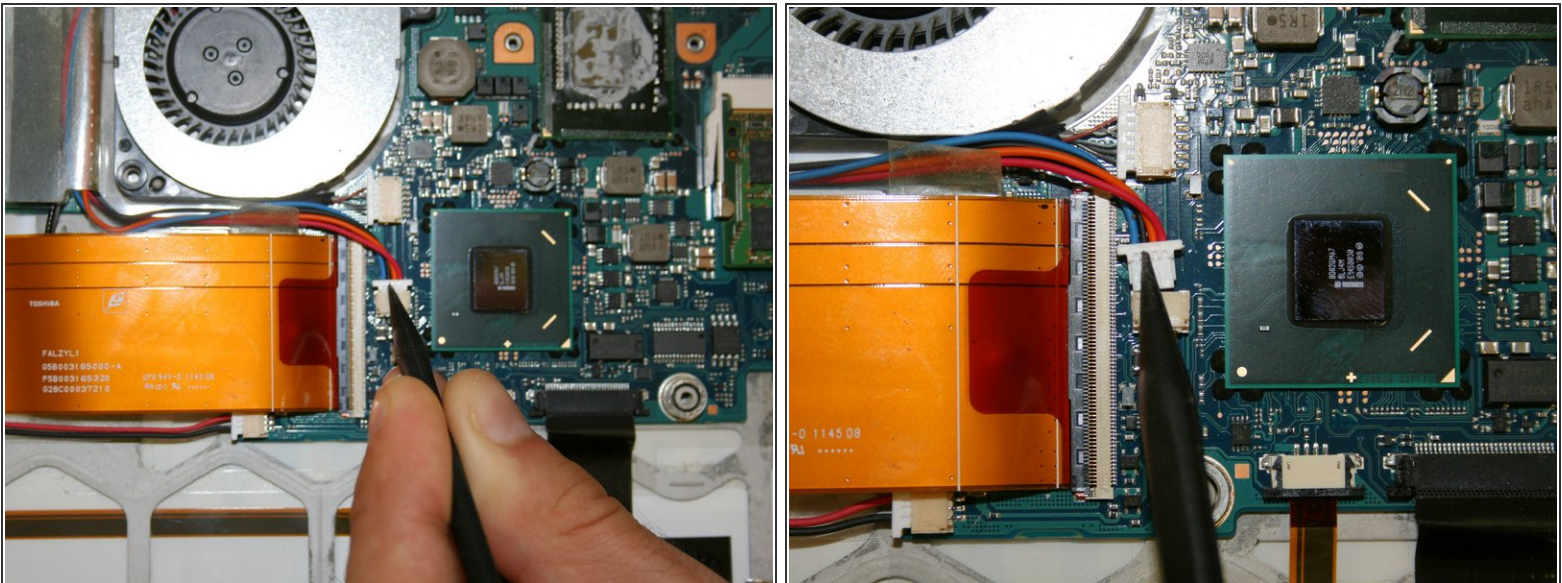
- Lift the back plate starting at the opposing edge to the SD card. Lift from left to right and continue lifting this plate at this angle until its free from the laptop.
- Once the backplate is completely off, this will reveal the inside components of the device.

Step 5



- Remove two 5mm Phillips #0 screws from the fan housing.

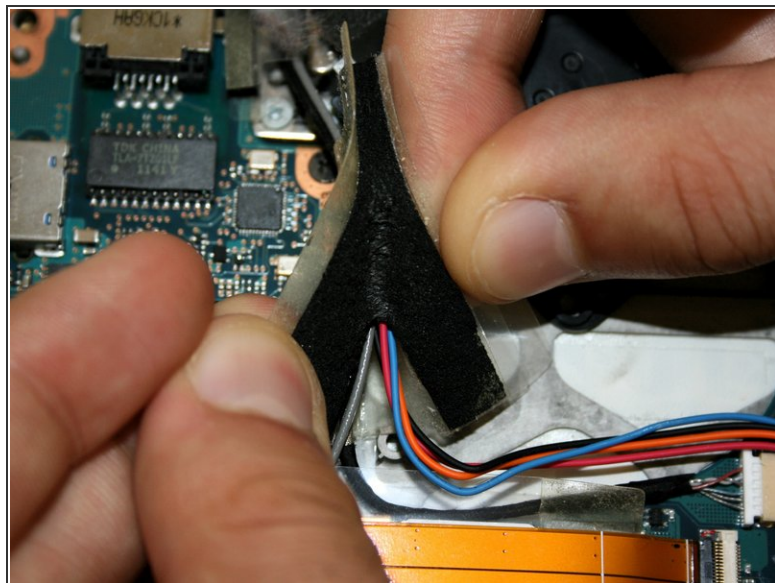
Step 6



- Use the nylon spudger to disconnect the wire (red/blue) plug from the motherboard.

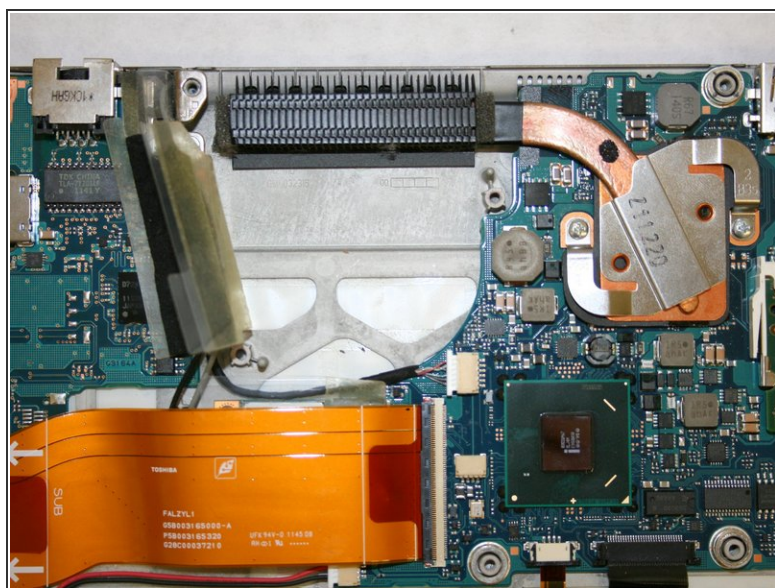
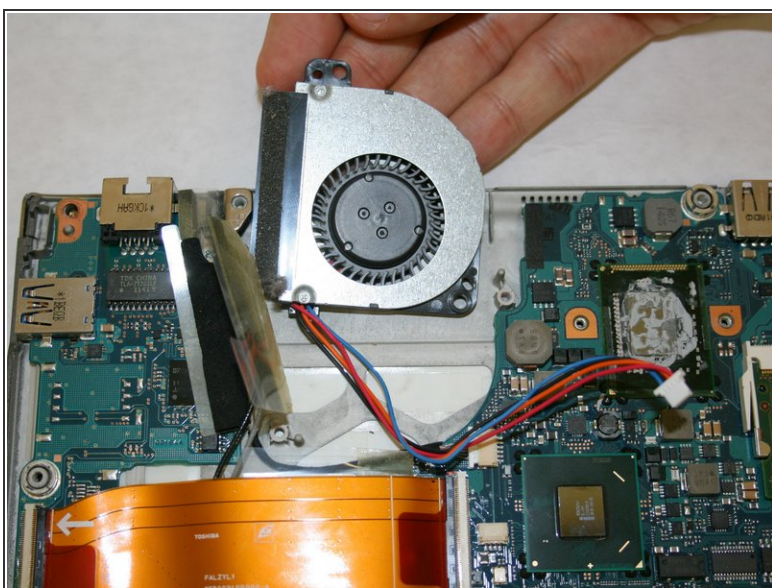
⚠ Be gentle and do not apply too much pressure when removing the plug as the motherboard may be fragile.

Step 7



- Lift up the wire and peel back the clear protective tape.
- Split the black protective foam inside the tape in half to uncover the wires.
- ⓘ This should make the wires free of all connections.

Step 8



- The fan is now free and able to be removed. Lift the fan out of place.

To reassemble your device, follow these instructions in reverse order.