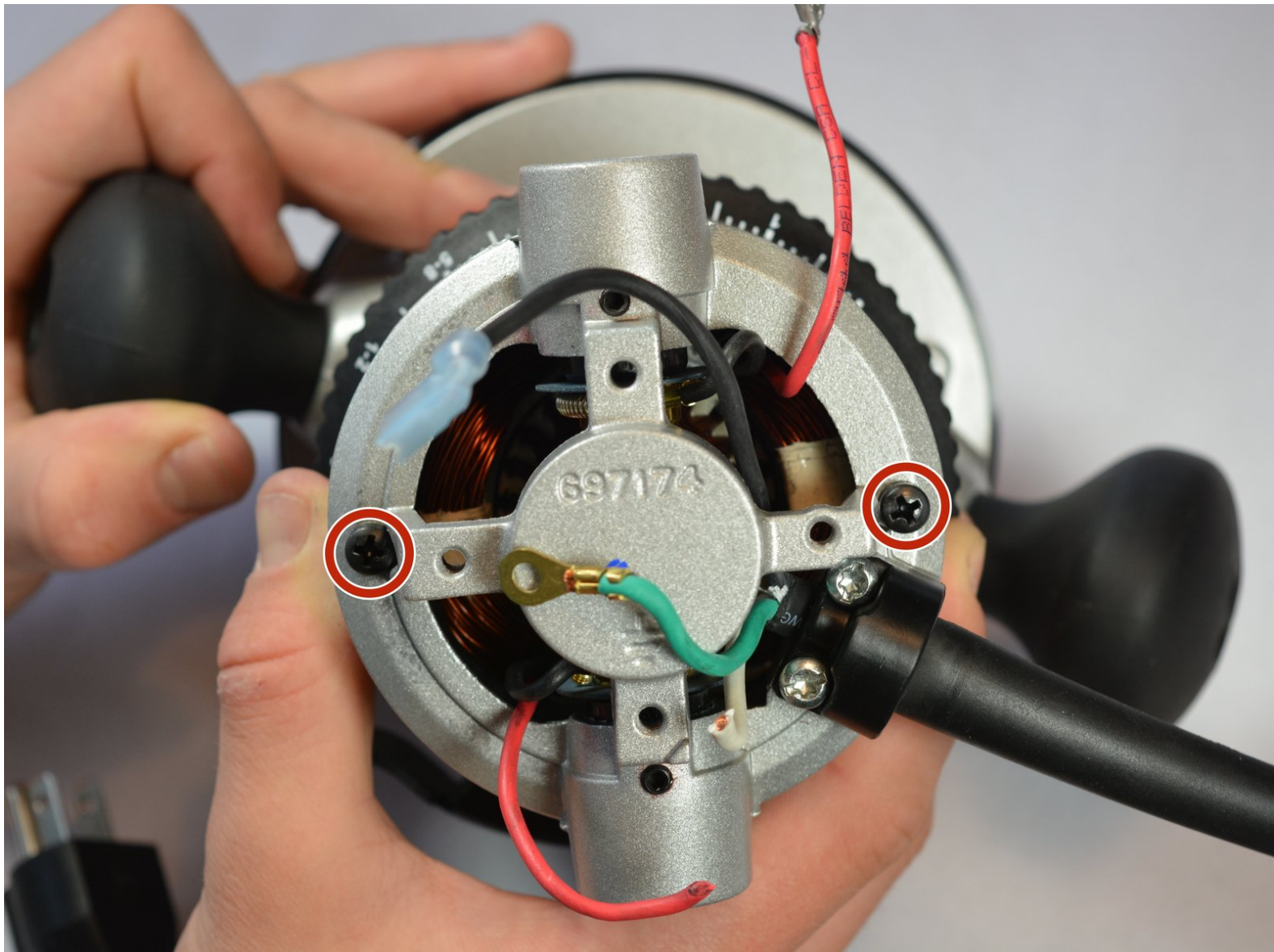




# Porter Cable 690LR Motor and Chuck Replacement

This guide will detail the process of replacing both the motor and the chuck.

Written By: Conor J



## INTRODUCTION

This guide will require you to use some force. You can refer to the disassembly in [this](#) video for further demonstration.



### TOOLS:

- [T25 Torx Screwdriver](#) (1)
- [Metal Spudger](#) (1)
- [Heavy-Duty Spudger](#) (1)
- [Slip Joint Pliers](#) (1)
- [Microfiber Cleaning Cloths](#) (1)



### PARTS:

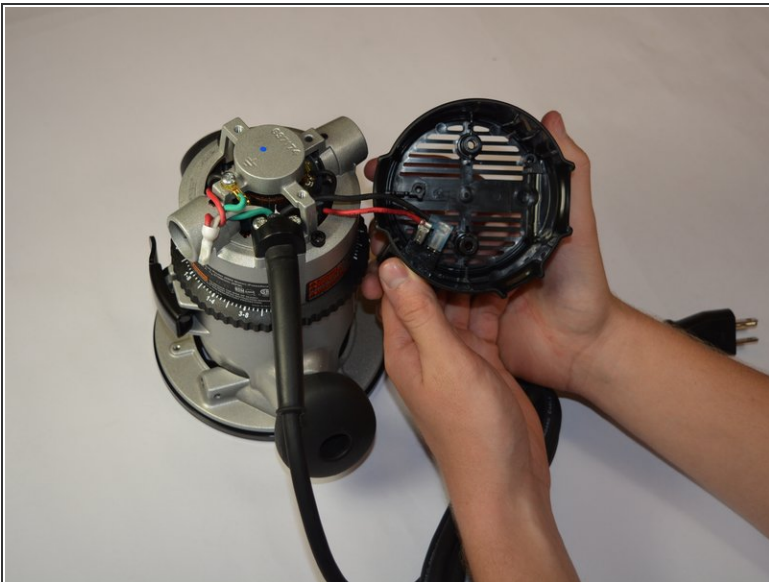
- [Power Switch](#) (1)

## Step 1 — Power Switch



- Use a Torx screwdriver to unscrew the 25.4 mm screws found at the top of the model.

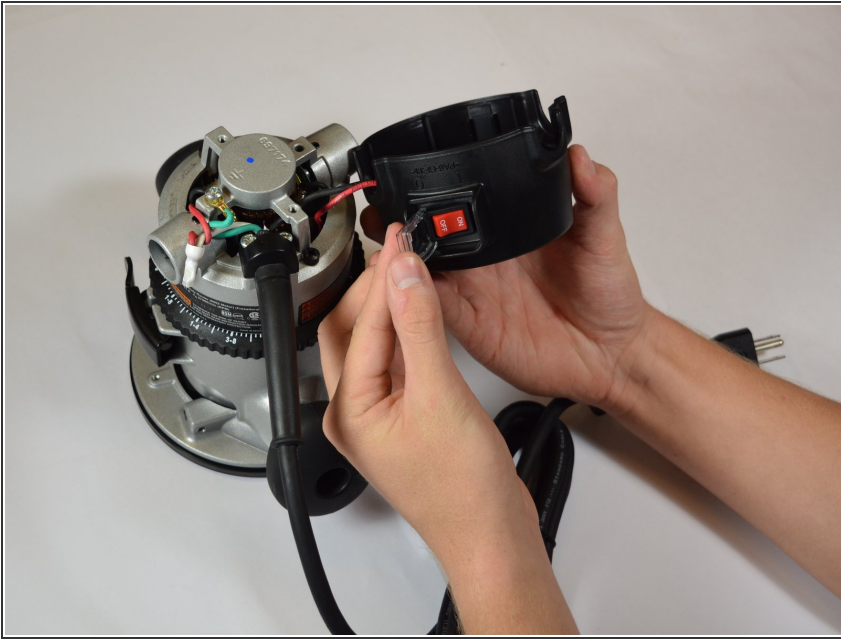
## Step 2



- Remove the top by gently lifting the cover from router body.

⚠ Be careful when pulling the top from its place; wires connect the switch to the electrical cord and could be pulled loose or damaged.

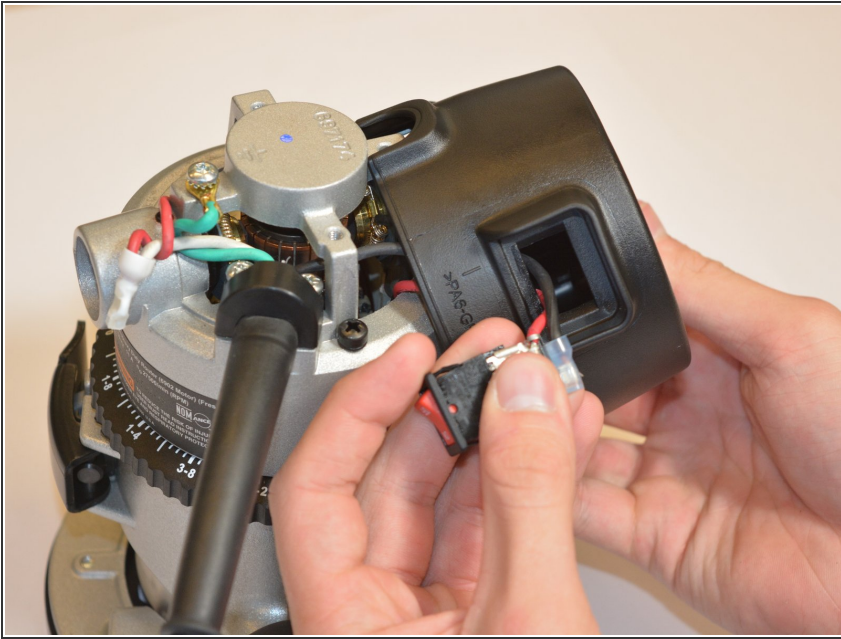
### Step 3



- Use a spudger to pull off the plastic covering of the power switch.
- ⓘ Don't be afraid to really pry underneath the plastic (no components of the router will be damaged if you do so).

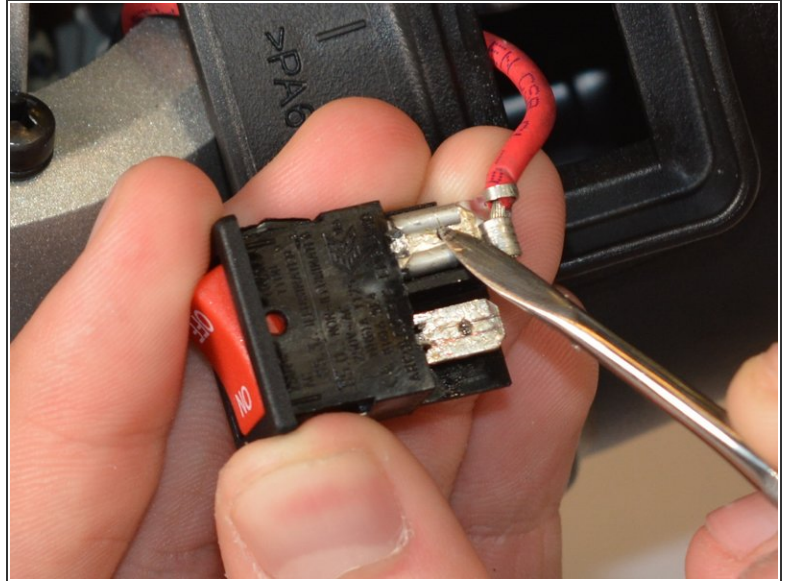
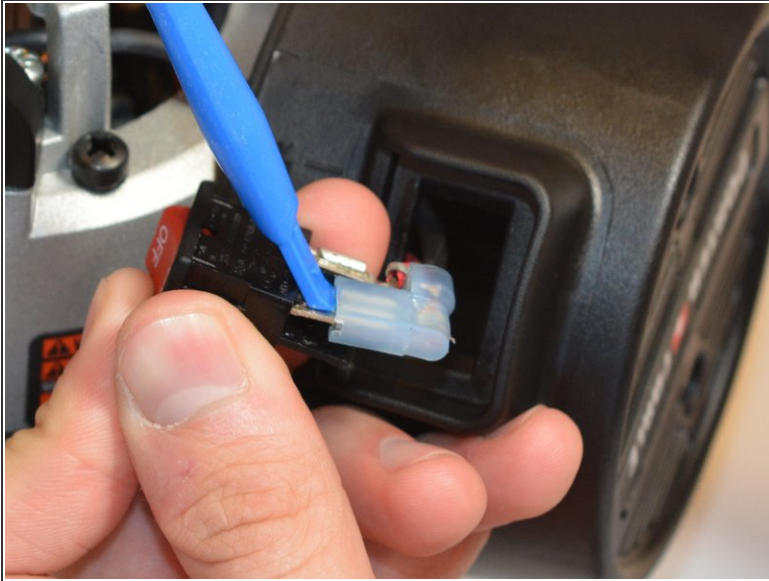


## Step 4



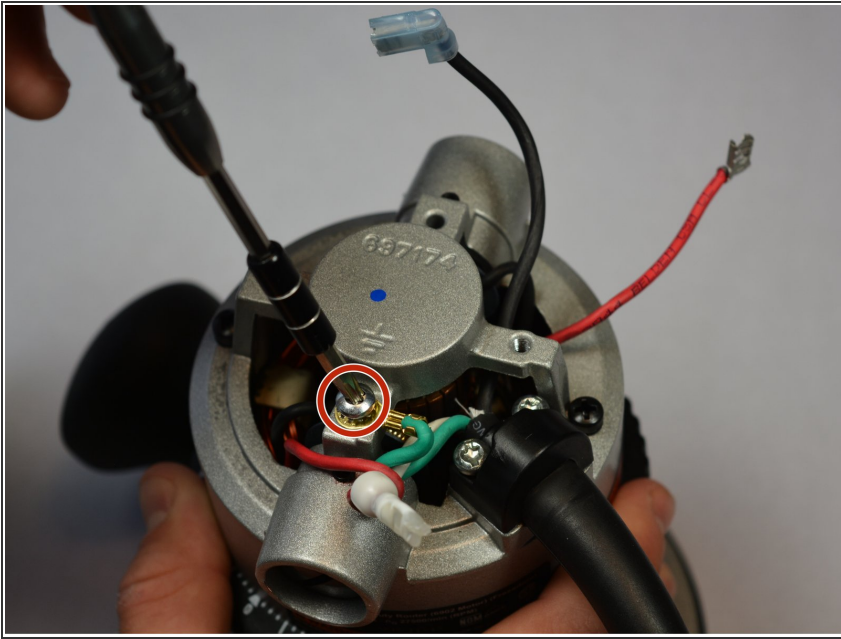
- Push the power switch through the top of the router. The power switch should now be completely detached from the router (besides the wire connections).

## Step 5



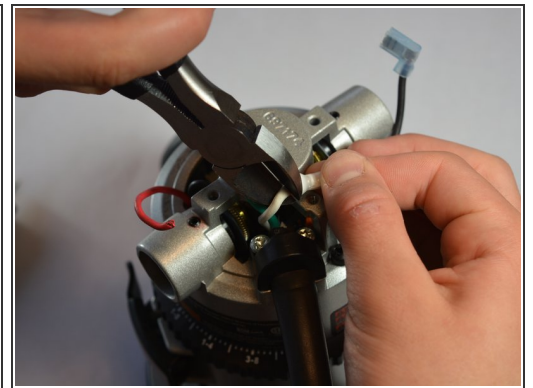
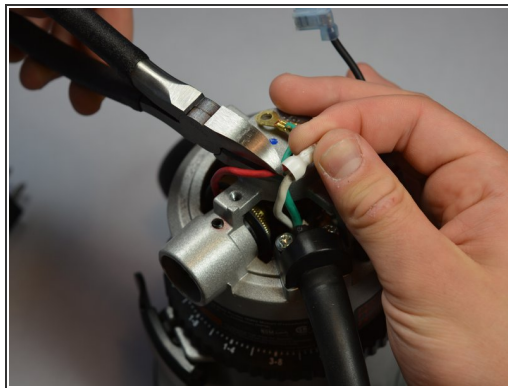
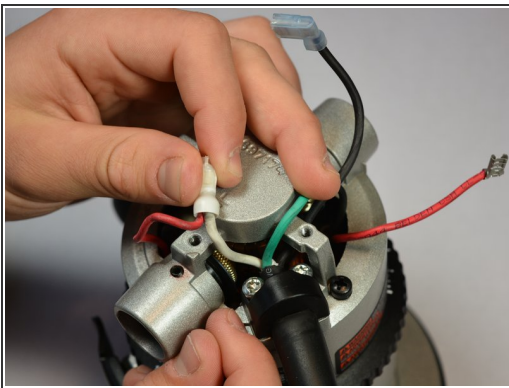
- Find the wire plugs which are attached to the power switch. These connections are located at the back of the plastic box that houses the switch.
- Use the spudger to carefully loosen the metal and rubber coverings, and detach the connections from the switch.
- ⓘ While some force is needed in order to successfully pull the connections free, have care in making sure that you don't damage any of the metal components. If needed you may carefully use a metal spudger instead of a plastic opening tool.

## Step 6 — Power Cord



- Use a pentalobe screwdriver to unscrew the 11 mm screw.

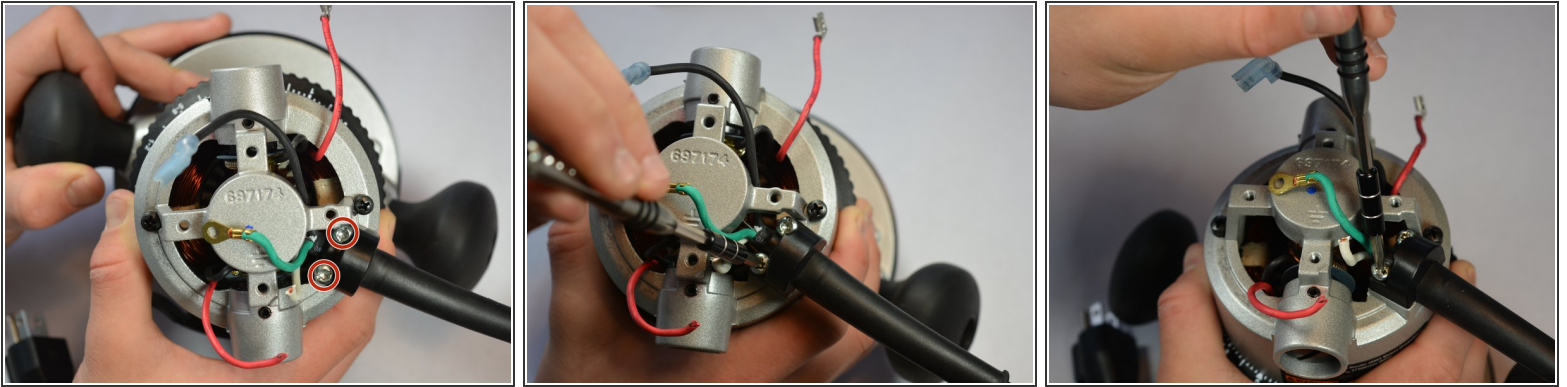
## Step 7



- Use a pair of pliers to cut the white and red wires where they are crimped and the white wire connector.
- ☑ **Reminder:** When following the guide in reverse order, you will need to remove a small section of the rubber insulation to reveal the wire. The wires will then have to be twisted together and covered with a new plastic housing. This process will shorten the wires every time the power cord is replaced.

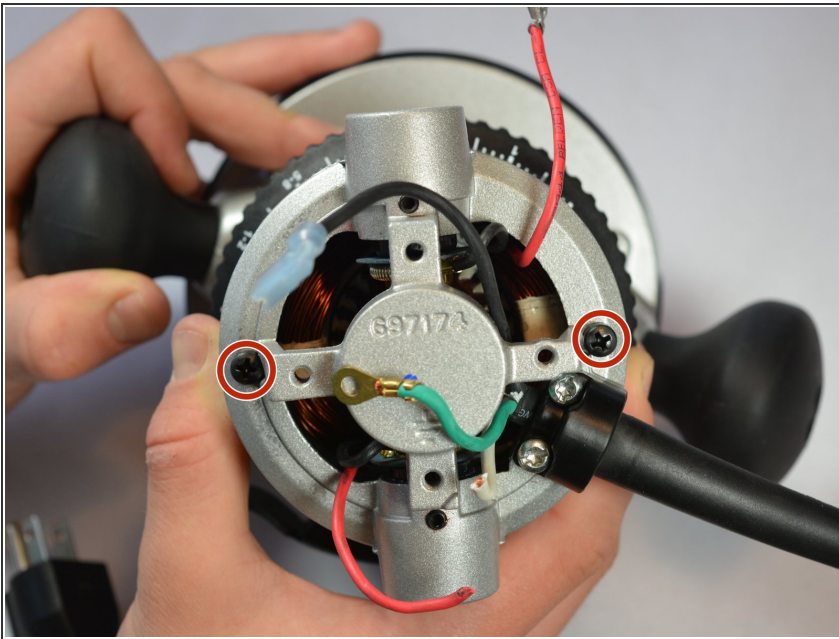


## Step 8



- Locate the two 20 mm screws on the base of the power cord.
- Use a pentalobe screwdriver to unscrew the screws.

## Step 9 — Motor and Chuck



- Use a phillips screwdriver to unscrew the two black 50 mm screws.



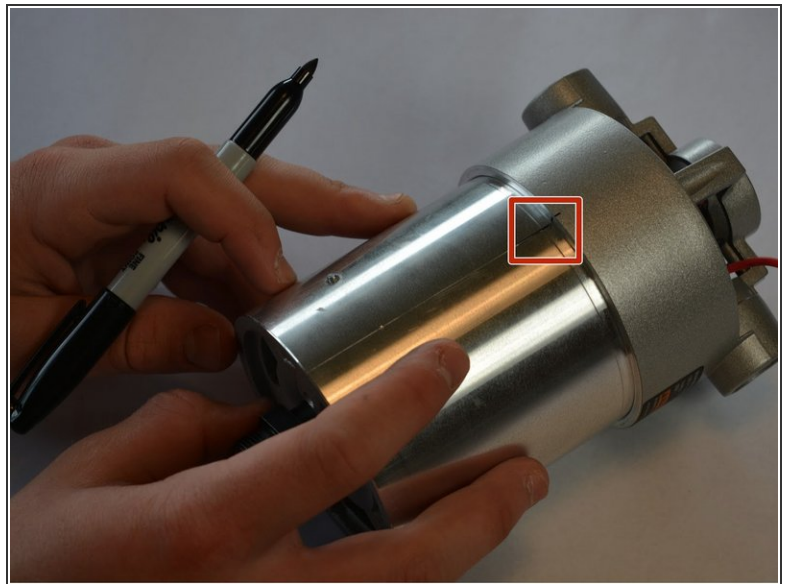
## Step 10



- Remove the base.

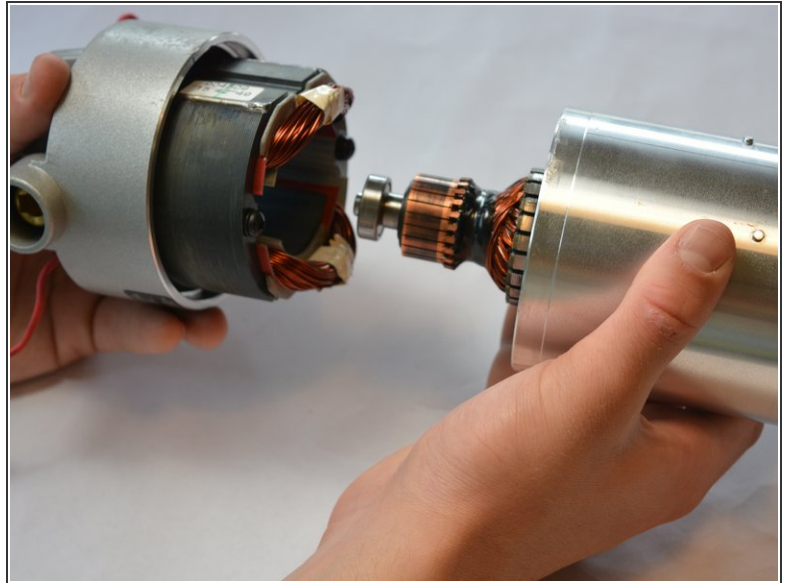
❗ Refer to the [base removal guide](#)

## Step 11



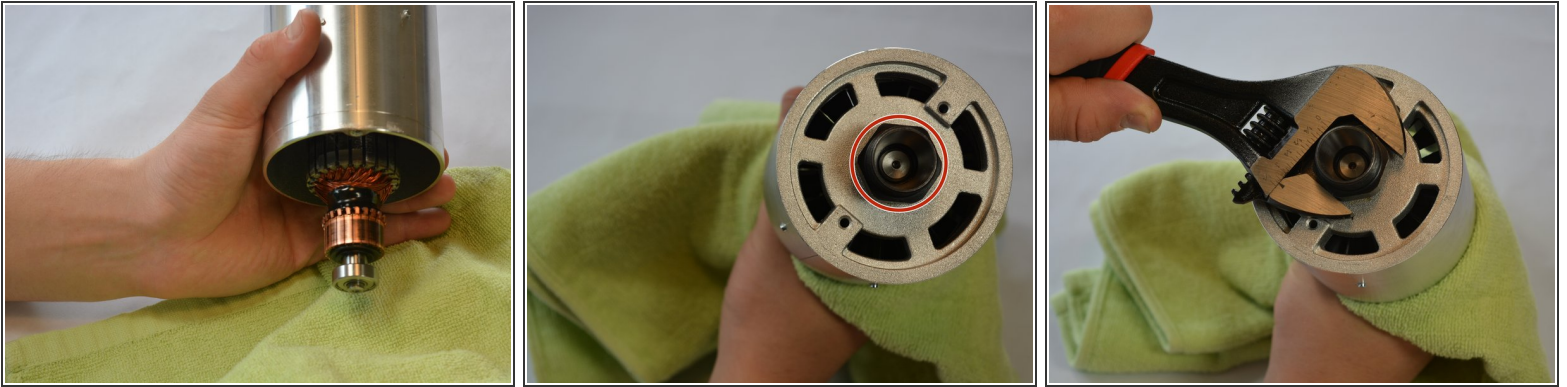
- Use a sharpie to mark where the base and the cap meet. This will allow you to make sure that you have all the alignment correct during reassembly.


## Step 12



- Use a hammer or mallet to hit the base of the cap a couple times. The cap should pull away freely from the base.
- ⓘ Don't be afraid to use force, the cap may be tightly lodged in its housing.

## Step 13



- With a rag in hand, hold the back of the motor tightly.
  - Locate the black hexagon chuck at the bottom of the router
  - Using a wrench, unscrew the chuck. The motor and the chuck will pull free from opposite ends of the base and can be replaced at your leisure.
-  Depending on how tight the chuck is fastened, an impact screw gun may be required.

To reassemble your device, follow these instructions in reverse order.