



Porter-Cable 382 On/ Off Switch Replacement

This guide will teach you how to properly remove a faulty on/off switch on your device.

Written By: Nick O'Sadcia





TOOLS:

- [Metal Spudger](#) (1)
- [T20 Torx Screwdriver](#) (1)

Step 1 — On/ Off Switch



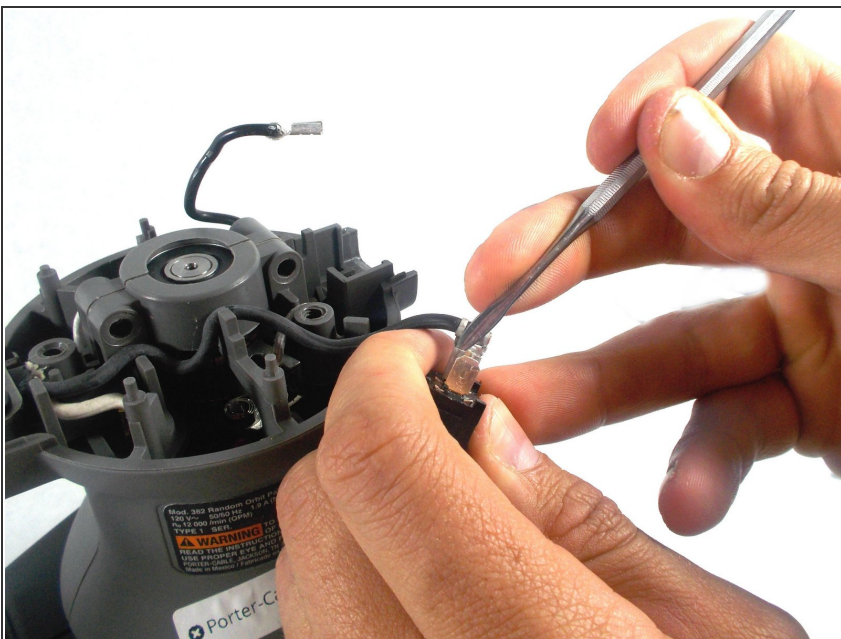
- First, locate the three screws on the top of the sander.
- Using a screw driver with a size T20 star bit, unscrew the screws by turning them to the left.

Step 2



- Locate your on off switch and in order to remove it you must slide it out of its slot.
- This shouldnt require any special tools, just wiggle the switch up and out.
- Make sure this is done carefully, the switch is attached to two wires that may break if they are pulled on too hard.

Step 3



- Using a spudger such as the one shown, carefully pry open the connectors as shown just enough to slide the prongs of the switch out.
- Once both prongs are open, the on-off switch can be removed freely and replaced with a new switch.

To reassemble your device, follow these instructions in reverse order.