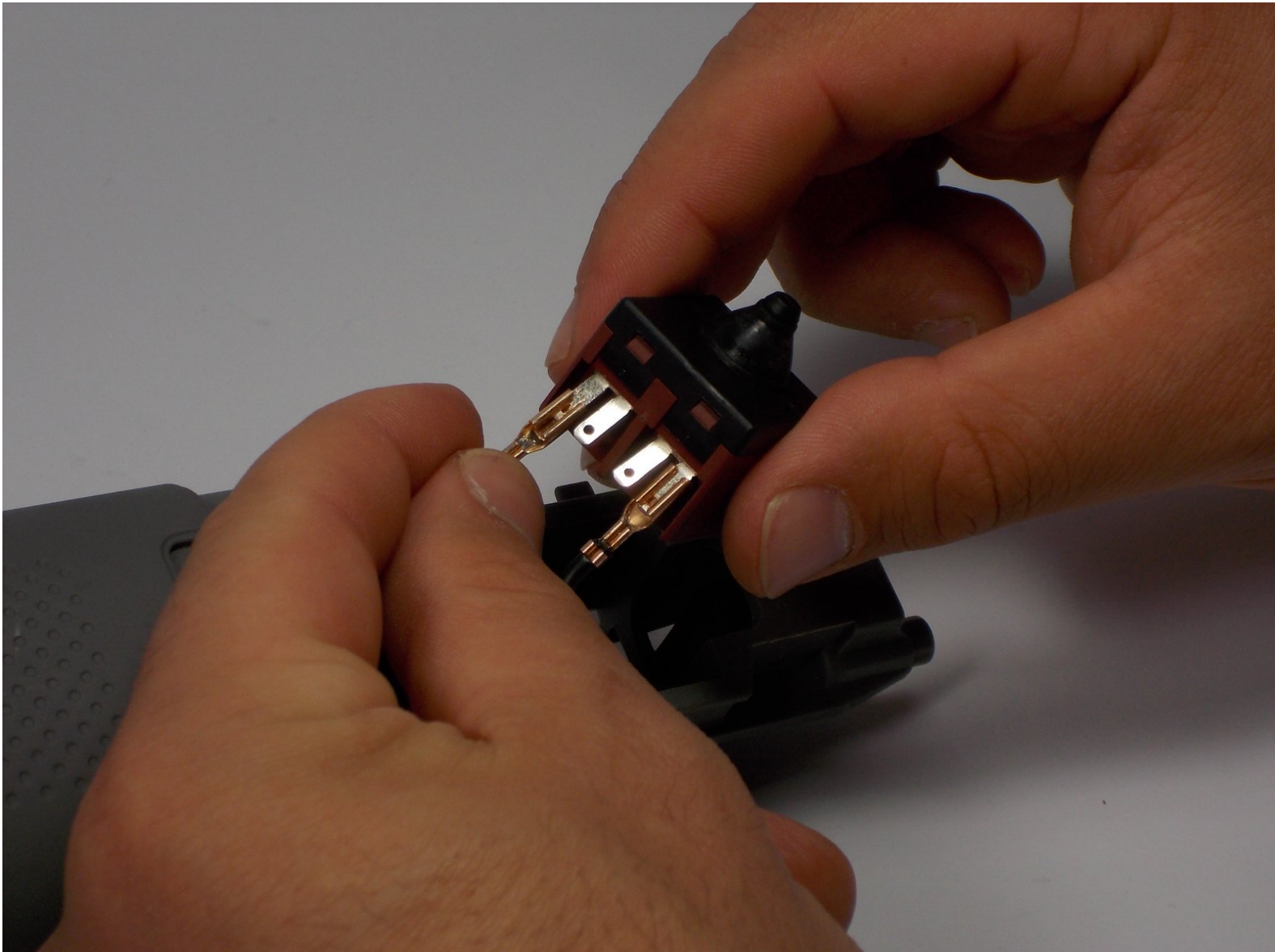




# Porter-Cable PC60TAG Power Switch Replacement

Replace the power switch in your Porter-Cable PC60TAG.

Written By: Mackenzie Fairbanks



## INTRODUCTION

Often times, a grinder that won't power on is due to a faulty power switch. This mechanical part may fail over time, resulting in the need to replace it. Use this guide to replace the power switch in your Porter-Cable PC60TAG.



### TOOLS:

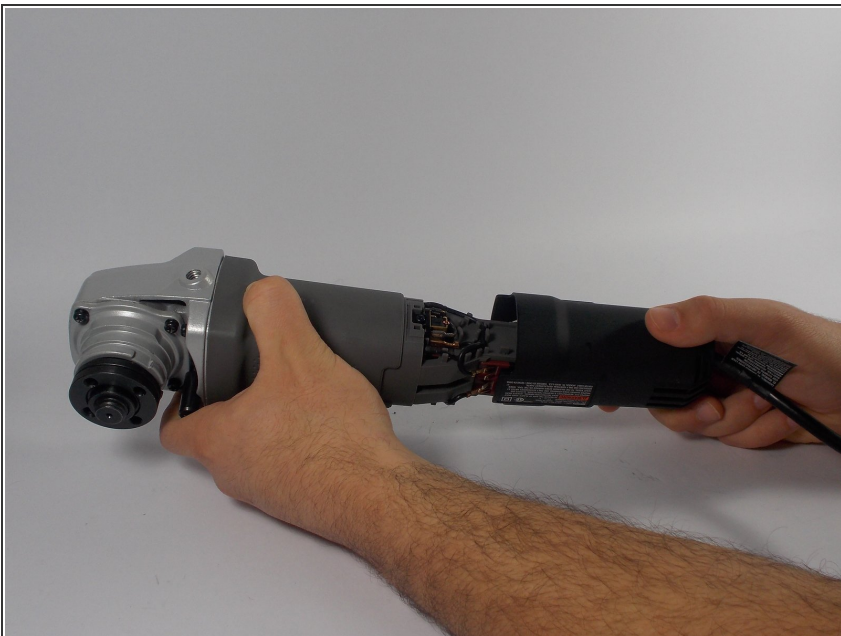
- [Phillips #2 Screwdriver](#) (1)
  - [Heavy-Duty Spudger](#) (1)
-

## Step 1 — Power Switch



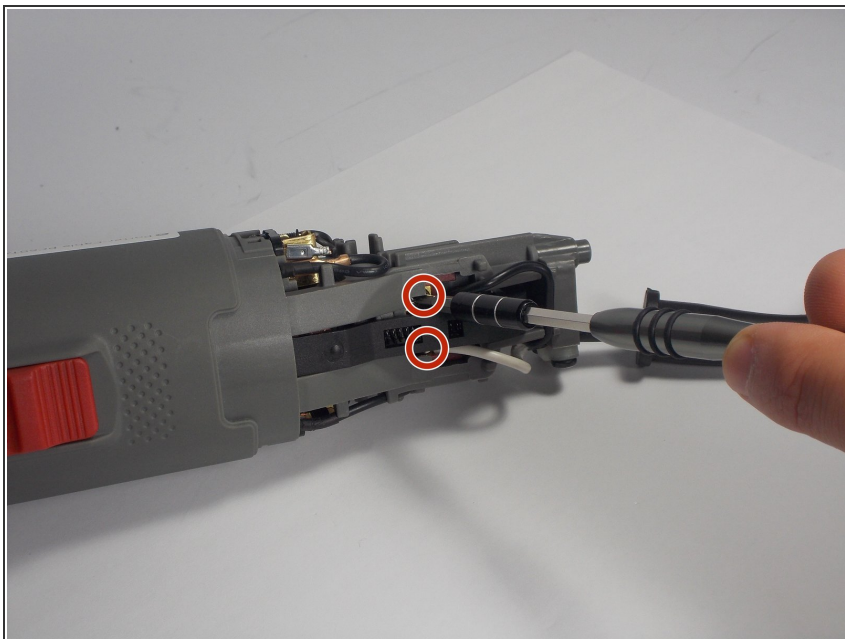
- Using the Phillips #2 screwdriver, remove the 3/4" Phillips screw on the back cover.
- ⚠ Unplug the grinder before disassembling.

## Step 2



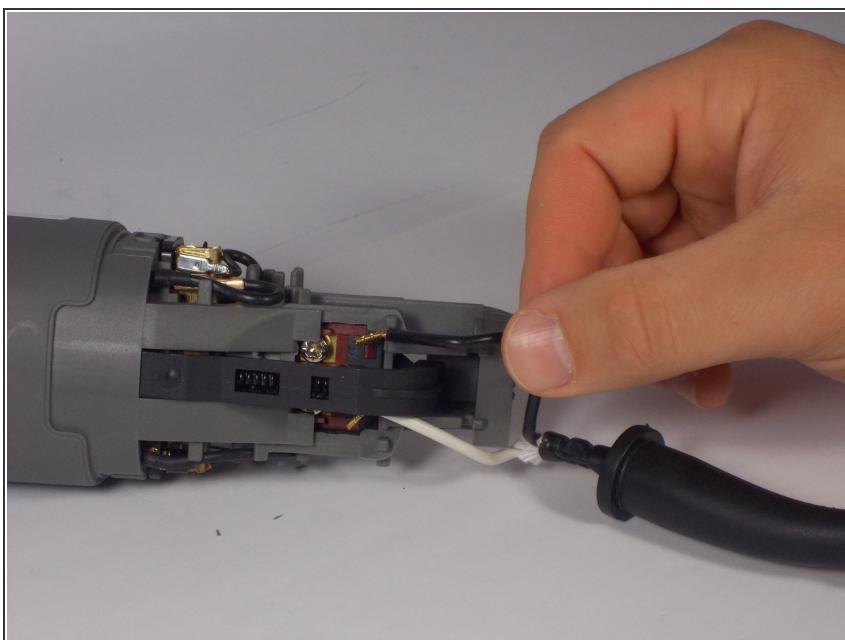
- Holding the front of the device, carefully slide the back cover over the cord.

### Step 3



- Using the Phillips #2 screwdriver, loosen, but do not remove, the two terminal screws securing the black and white wires from the power cord.

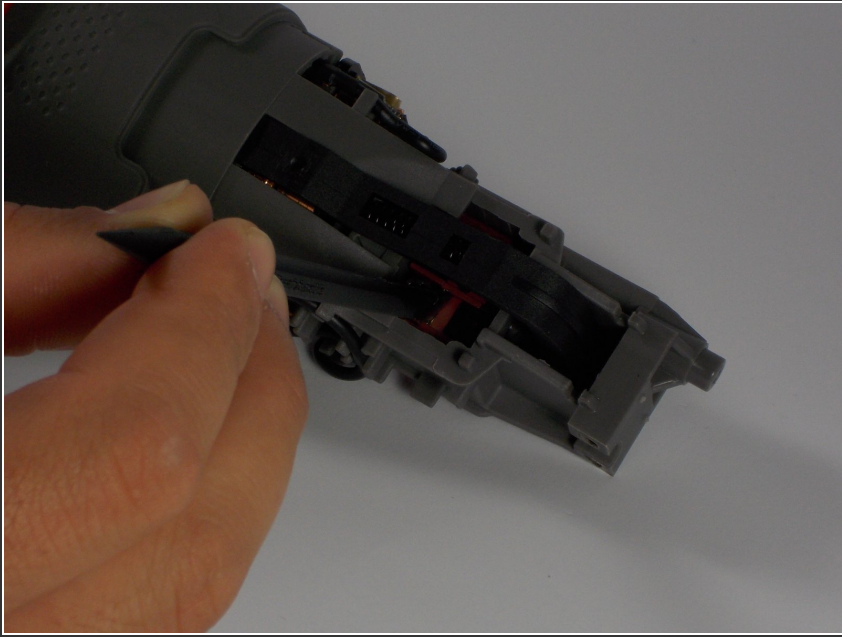
### Step 4



- Careful remove each wire from the power cord from underneath the terminals.

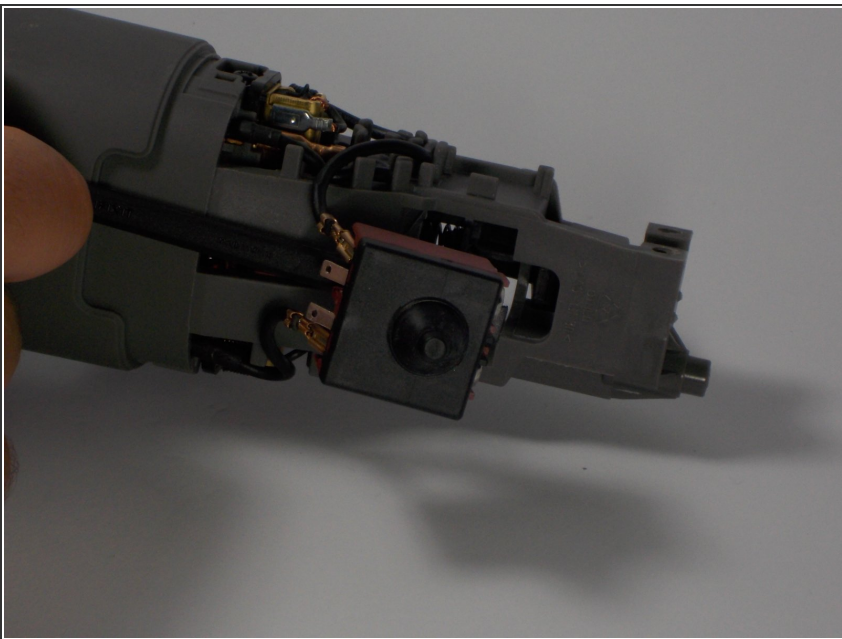


## Step 5



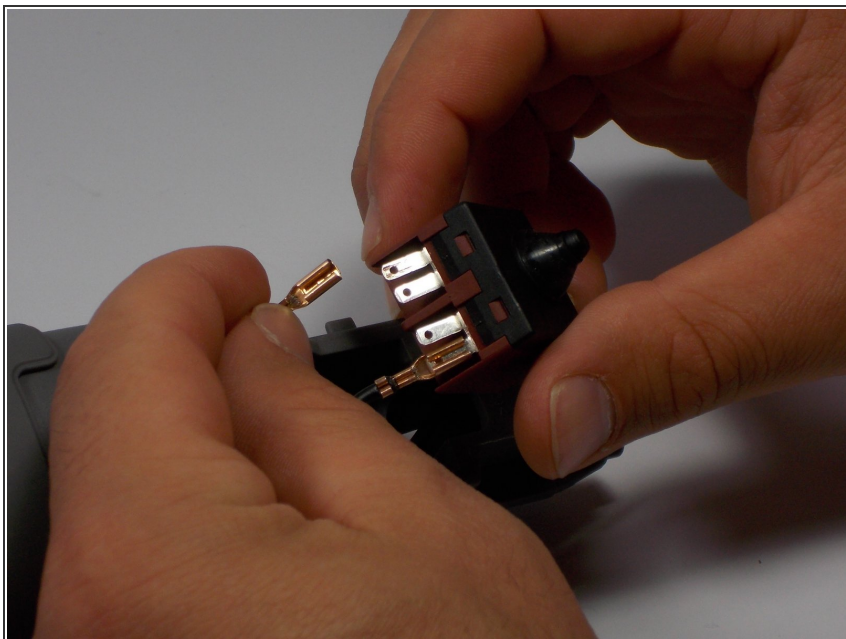
- Using the spudger, carefully push the red power switch out of the device.

## Step 6



- From the other side of the device, use the spudger to carefully pry out power switch away from the device.

## Step 7



- Using your fingers, carefully remove each of the gold terminals from the power switch. You may need to gently wiggle the terminal back and forth in order to remove it.

To reassemble your device, follow these instructions in reverse order.