



Power Mac G4 Cube Airport Card Replacement

Installing a new Airport Card.

Written By: Ryan Chun



INTRODUCTION

Installing the Airport Card involves removing the outer case before actual installation.



TOOLS:

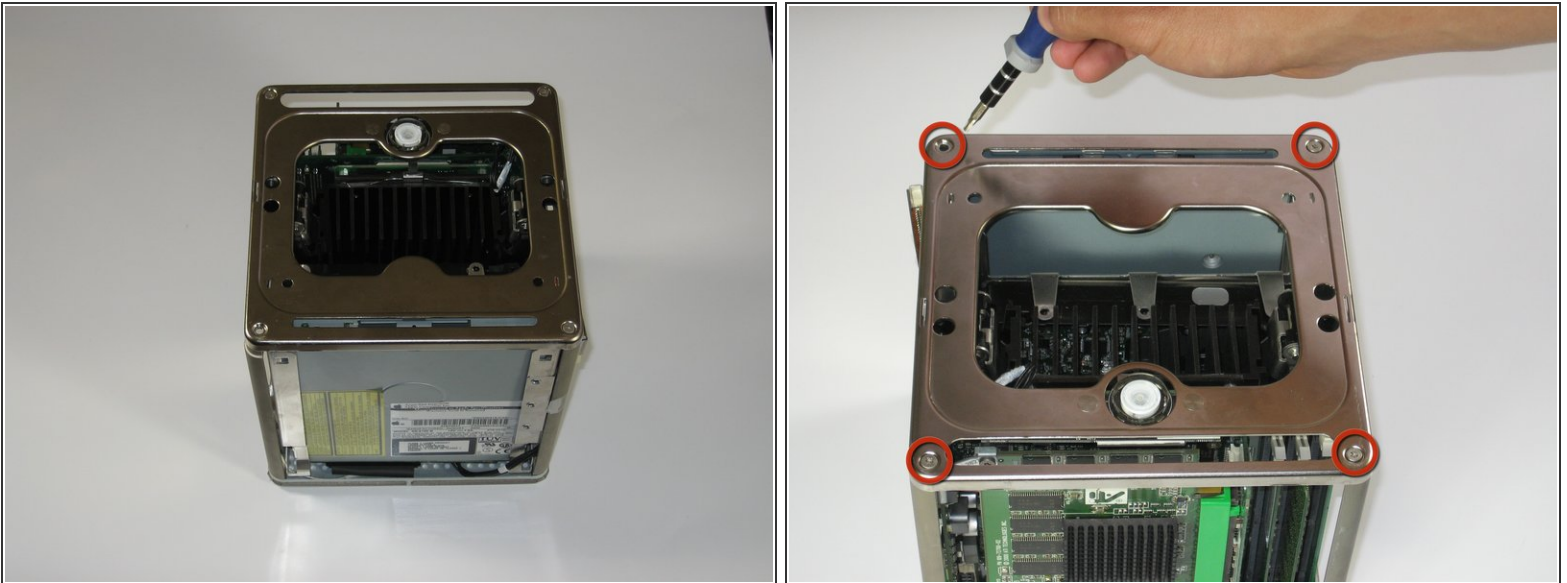
- [T10 Torx Screwdriver](#) (1)
-

Step 1 — Outer Case



- Release the back handle of the PowerMac. Slowly pull out the cube by holding the end of the handle. Watch for any parts that may become entangled with the outer case.
- Push back the handle after you have taken the core out of the case.

Step 2



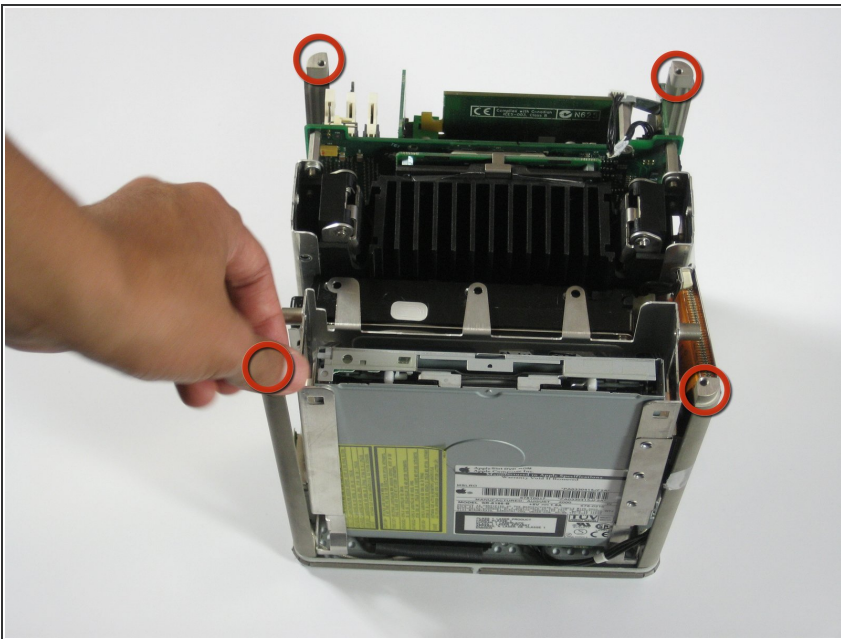
- Place the cube upside down and remove the four T10 Torx screws on the front plate. Then remove the two screws on each side.

Step 3



- ⚠ Slowly lift the plate off the cube and disconnect the power cord.

Step 4



- Remove the four pillars from each corner.
- ⓘ The pillars should come out fairly easily.

Step 5 — Airport Card



- Pull outwards on the antenna cable.
- Pull on the clear tab outwards to remove the existing AirPort card
- Slide in the new AirPort card and connect the antenna cable

To reassemble your device, follow these instructions in reverse order.