



# Power Mac G4 Cube Modem Replacement

Installing a new Modem.

Written By: Ryan Chun



---

## INTRODUCTION

Installing Modem involves removing the outer case and video card before installation.

---



### TOOLS:

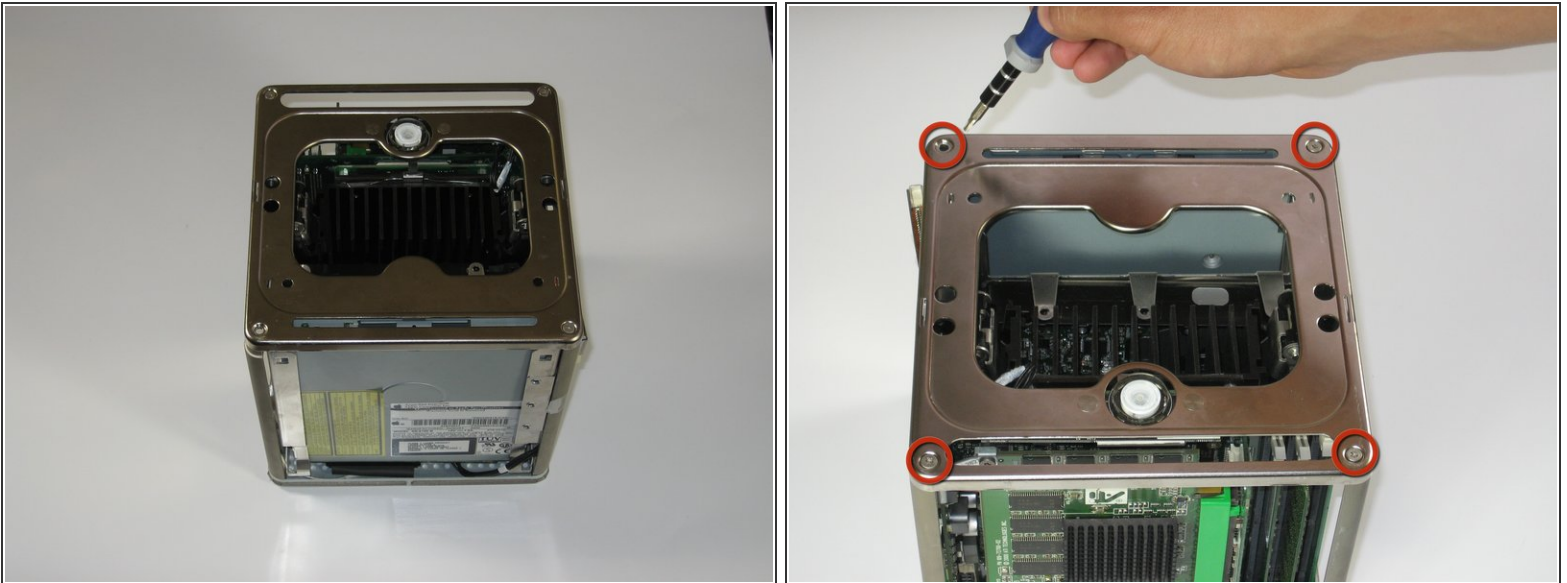
- [T10 Torx Screwdriver](#) (1)
-

## Step 1 — Outer Case



- Release the back handle of the PowerMac. Slowly pull out the cube by holding the end of the handle. Watch for any parts that may become entangled with the outer case.
- Push back the handle after you have taken the core out of the case.

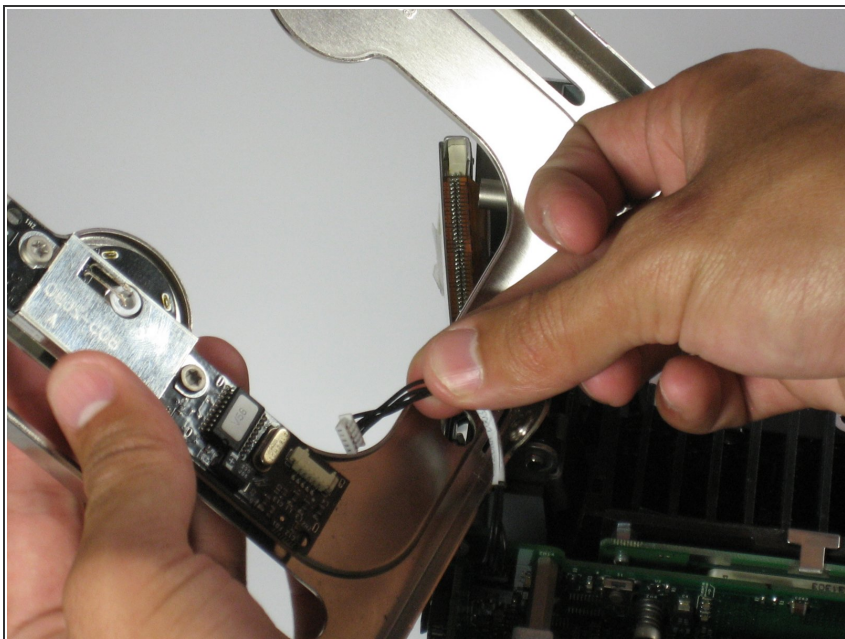
## Step 2



- Place the cube upside down and remove the four T10 Torx screws on the front plate. Then remove the two screws on each side.

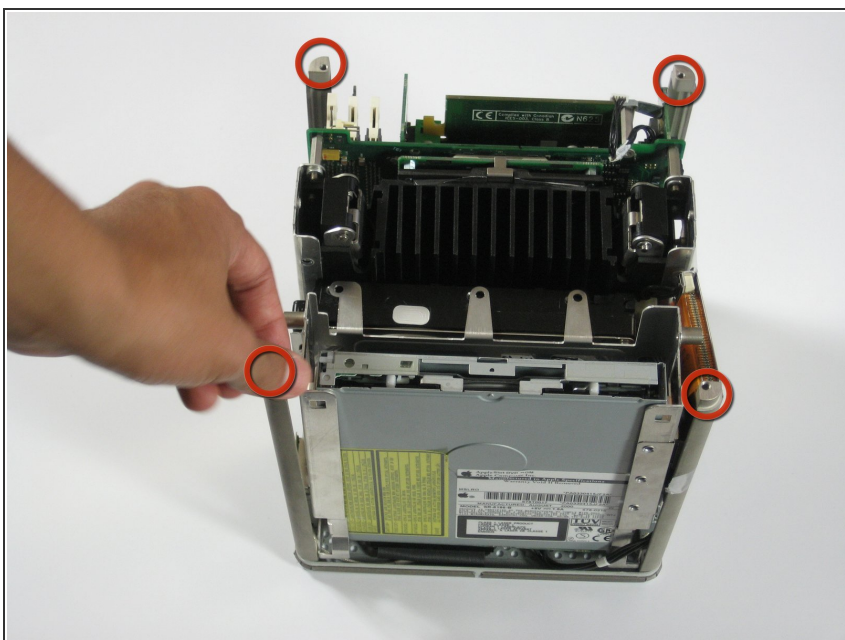


## Step 3



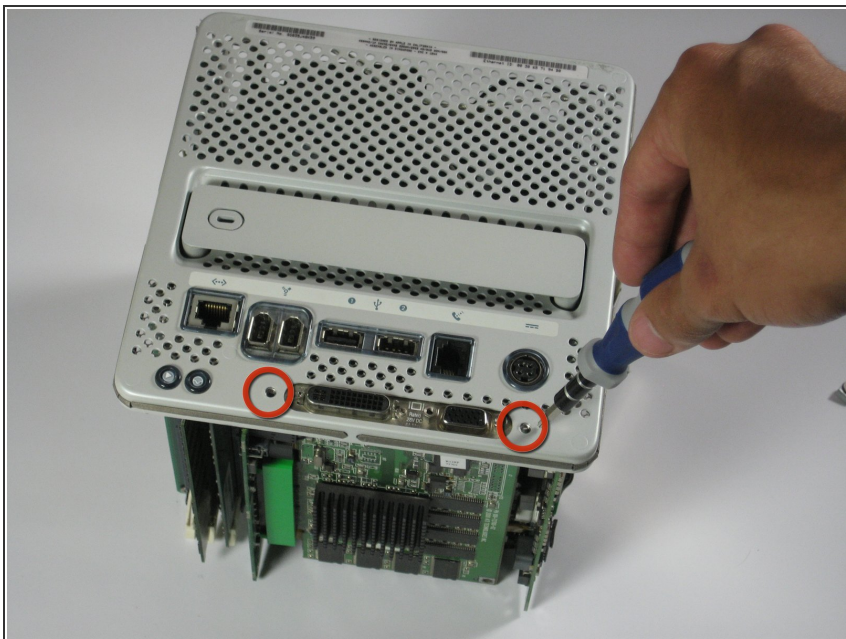
- ⚠ Slowly lift the plate off the cube and disconnect the power cord.

## Step 4



- Remove the four pillars from each corner.
- ⓘ The pillars should come out fairly easily.

## Step 5 — Video Card



- Remove the screws on the back of the VGA port.

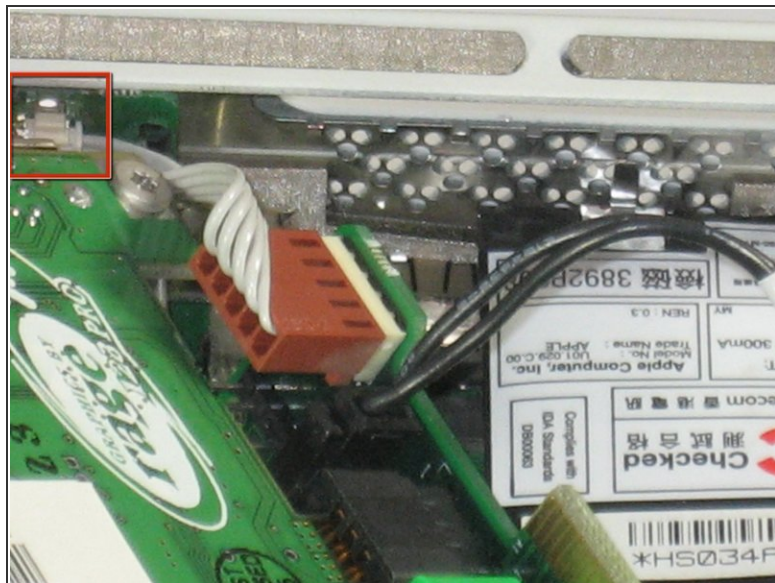
## Step 6



- Remove the screw attaching the video card to the logic board.

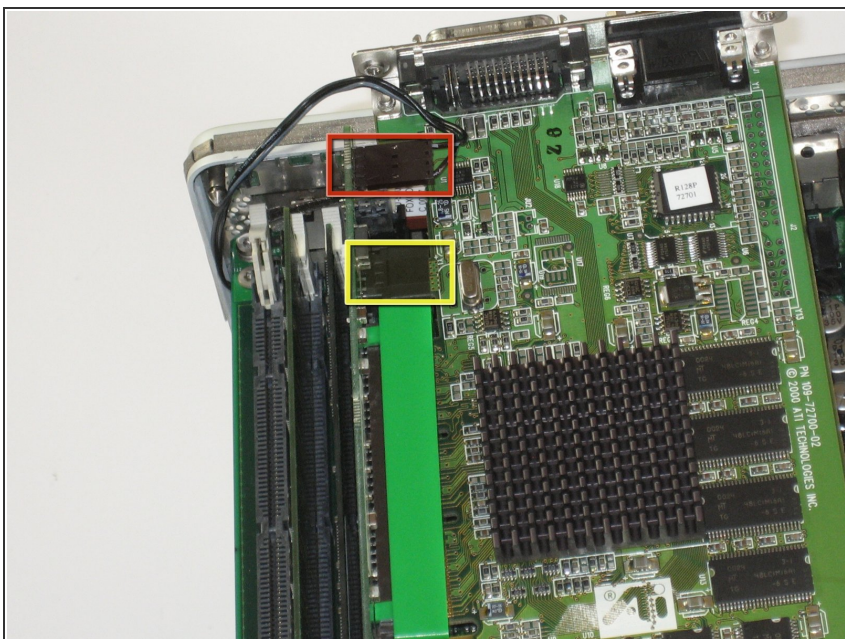


## Step 7



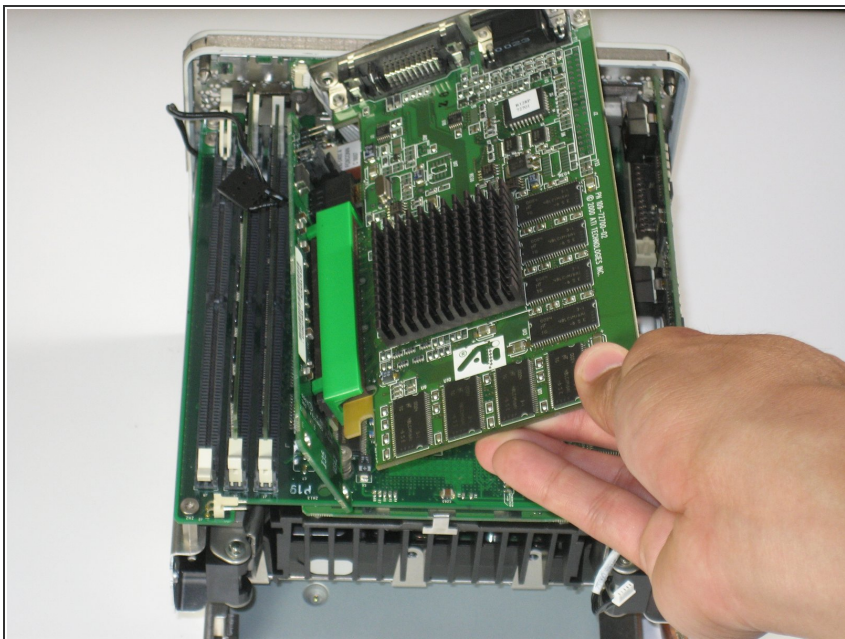
- Remove power cord from the video card.

## Step 8



- Remove the power cord.
- Remove the connector.
- Remove the video card from the logic board.

## Step 9



⚠ Carefully lift the video card from the logic board.

ℹ The video card should come out easily.

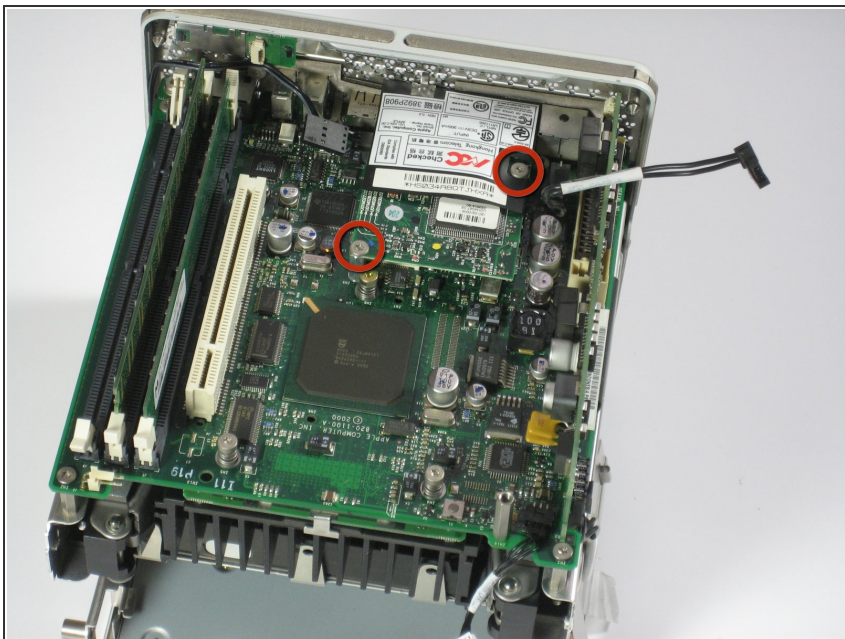
## Step 10



- Separate the video card from the adapter.

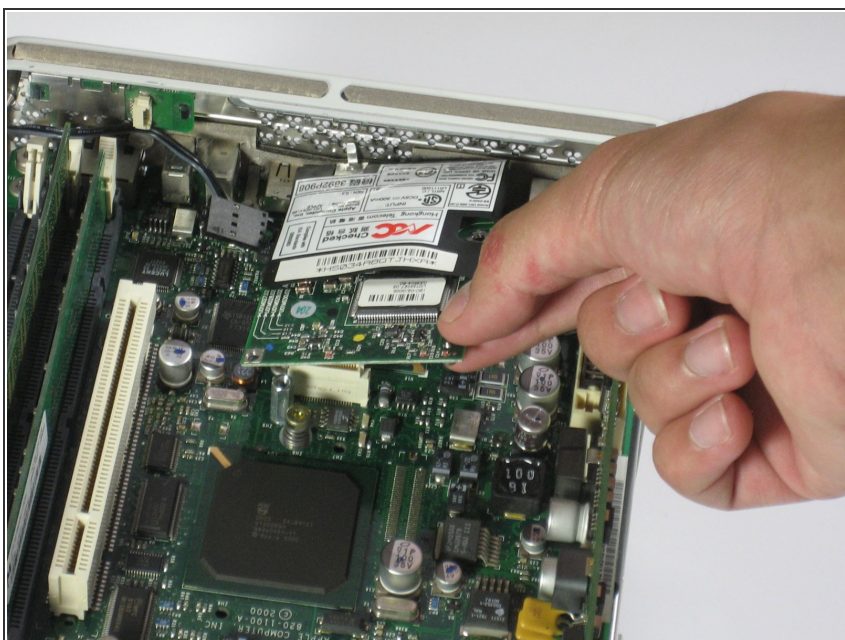


## Step 11 — Modem



- Remove the two screws from the modem.

## Step 12



- Lift modem from the Logic Board.
- ⓘ The modem should come out easily.

To reassemble your device, follow these instructions in reverse order.