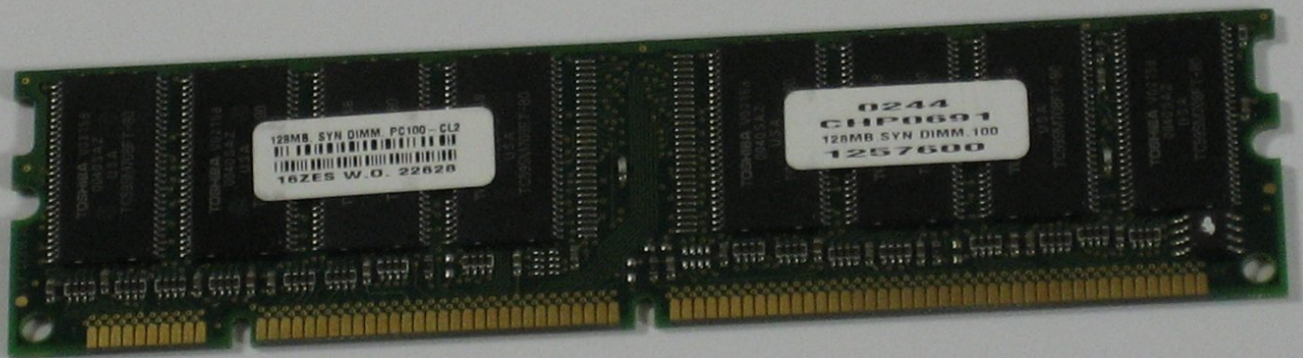




# Power Mac G4 Cube RAM Replacement

Installing RAM.

Written By: Ryan Chun



# INTRODUCTION

Installing RAM involves removing the outer case before installation.



## TOOLS:

- [T10 Torx Screwdriver](#) (1)



## PARTS:

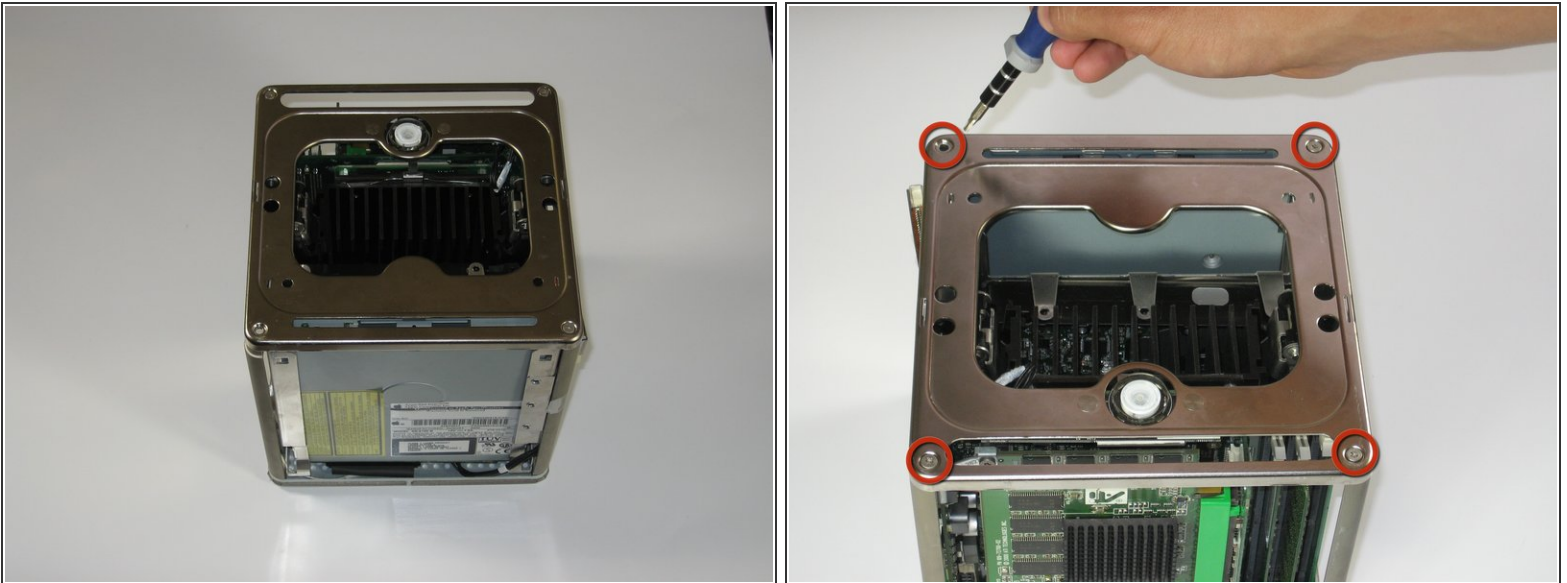
- [PC100 128 MB RAM Chip](#) (1)
- [PC100 64 MB RAM Chip](#) (1)

## Step 1 — Outer Case



- Release the back handle of the PowerMac. Slowly pull out the cube by holding the end of the handle. Watch for any parts that may become entangled with the outer case.
- Push back the handle after you have taken the core out of the case.

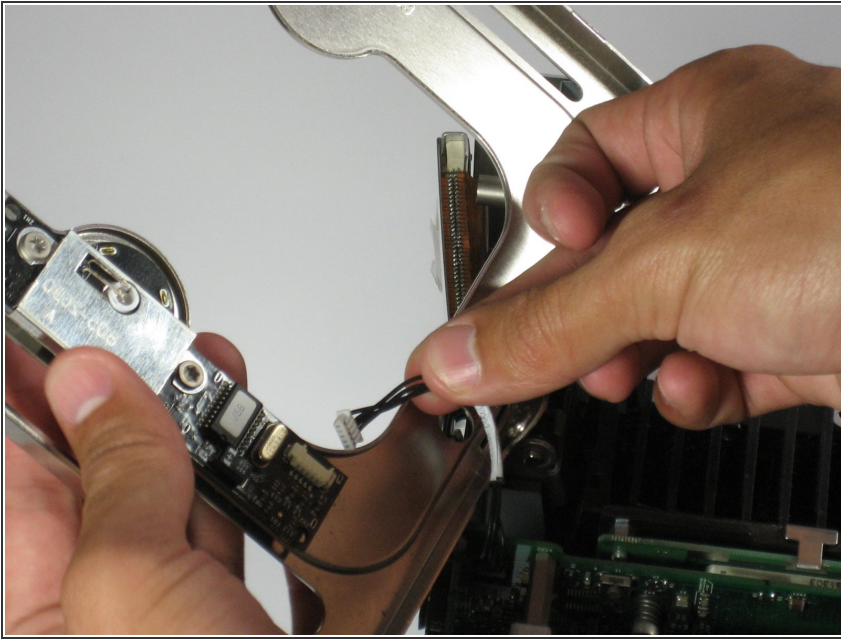
## Step 2



- Place the cube upside down and remove the four T10 Torx screws on the front plate. Then remove the two screws on each side.

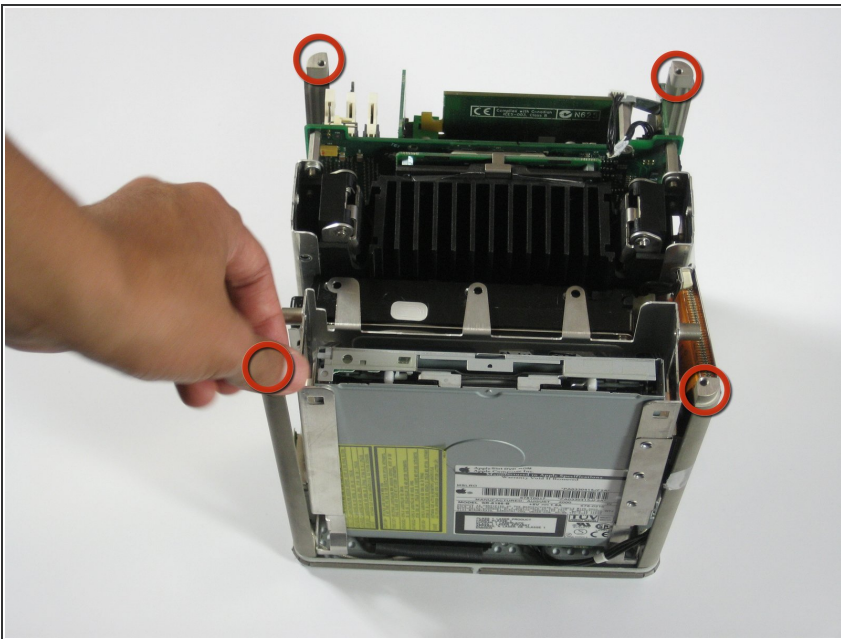


### Step 3



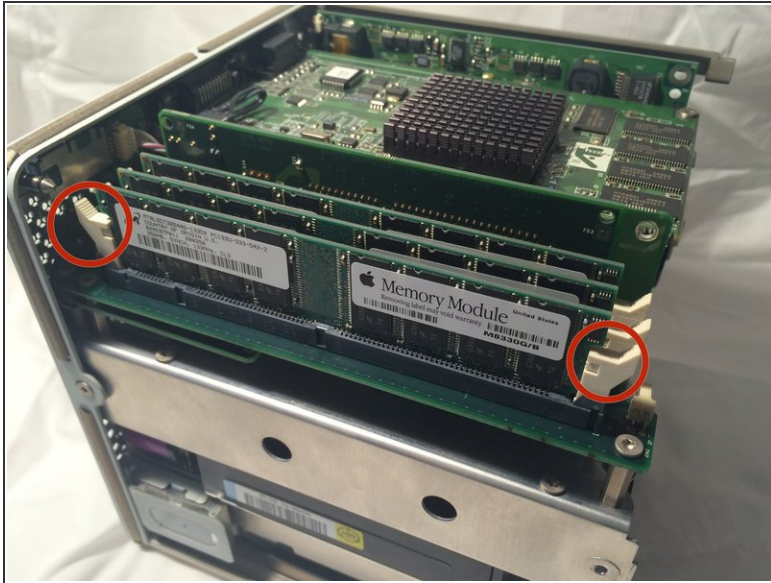
- ⚠ Slowly lift the plate off the cube and disconnect the power cord.

### Step 4



- Remove the four pillars from each corner.
- ⓘ The pillars should come out fairly easily.

## Step 5 — RAM



- Flip the two latches on the side of the RAM chip.
- Remove the chip from the logic board and replace with new RAM.

To reassemble your device, follow these instructions in reverse order.